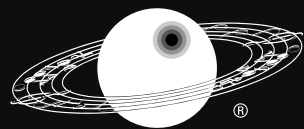


The Windchime for All Seasons™



Music of the Spheres® INC.
HANDCRAFTED IN AUSTIN TEXAS USA

the *Stradivarius* of windchimes®

WORLD PEACE, ONE BACKYARD AT A TIME® ~ *Larry Roark, Founder*



A Symphony of Choices

From 30-inch soprano chimes to the astounding 14 foot Basso Profundo, our variety of sizes and sound gives your customers an impressive array of options and price points. You can choose from five sizes (voices) of chimes:

• **Soprano** • **Mezzo** • **Alto** • **Tenor** • **Bass**

in the ten different tunings described below as well as our one-size Westminster, Contrabass, and Basso Profundo chimes.*

1	size (voice)	SOPRANO
	tubing diameters	7/8"
	overall hanging length	30"
	weight	2 lbs.

2	size (voice)	MEZZO
	tubing diameters	1-3/16"
	overall hanging length	38"
	weight	5 lbs.

3	size (voice)	ALTO
	tubing diameters	1-1/2"
	overall hanging length	50"
	weight	10 lbs.

4	size (voice)	TENOR
	tubing diameters	2"
	overall hanging length	60"
	weight	27 lbs.

5	size (voice)	BASS
	tubing diameters	2-1/2"
	overall hanging length	90"
	weight	45 lbs.

6	size	WESTMINSTER
	tubing diameters	1-1/2"
	* overall hanging length	90"
	weight	15 lbs.

7	size (voice)	CONTRABASS
	tubing diameters	3.5"
	* overall hanging length	108"
	weight	100 lbs.

8	size (voice)	BASSO PROFUNDO
	tubing diameters	5"
	* overall hanging length	14 feet
	weight	200 lbs.

Specifications

Designed to Accompany Each Other

Our founder, the gifted musician Larry Roark, recreated musical tunings found throughout the world for your customers' backyard pleasure. He realized that by hanging multiple chimes in the same musical tuning, but in different sizes (voices), he could create the ensemble, or "singing in parts" effect. Your customers' enthusiasm for collecting ensembles will amaze you.

Some customers will want to blend musical tunings for their ensembles, or will want to add a companion tuning once they have all five of our series. Optimal combinations are these:

Pentatonic - Hawaiian Mongolian - Aquarian
Chinese - Japanese - Balinese

The Dramatic Difference Your Customers can Hear

Your customers don't need to know a single note of music to appreciate the harmony that distinguishes Music of the Spheres chimes from every other. Our symphonic quality chimes, precision tuned to A440 (standard orchestral pitch), sing with a rich, lyrical blend of tones that resonate not simply in the ear, but in the soul.

The Perfect Pitch to Increase Your Sales

Our CD demonstrates all 52 chimes as well as three ensembles. Additionally you can hear sound bytes of all the possibilities at www.motschimes.com. These tools really help in selling a chime you may not currently have in stock.

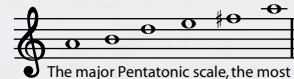
Written in the octave of the alto size. Sopranos are one octave higher; mezzos are one-half octave higher; tenors are one-half octave lower; basses are one octave lower.

Soothing. Uplifting. Exotic. Mesmerizing.

You will discover Music of the Spheres® speaks to you.
And more importantly, to your customers.

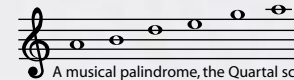
Familiar (Major) Tunings

Pentatonic



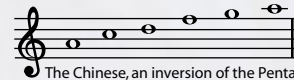
The major Pentatonic scale, the most widely used melodic scale in the world, is found in the black notes of the piano keyboard. In the soprano, alto, and bass sizes, it contains all the notes to "Amazing Grace". It blends well with Hawaiian and Westminster.

Quartal



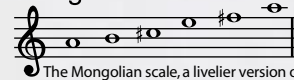
A musical palindrome, the Quartal scale is based on intervals of fourths and fifths. Its smooth and serene sound captivated American composers, notably Aaron Copland and Paul Hindemith, in the early twentieth century. We use this scale in our Contrabass and Basso Profundo chimes.

Chinese



The Chinese, an inversion of the Pentatonic, is the lightest and sweetest of our scales, sure to evoke a sense of happiness. Its sweetness best complements the more serious Japanese and Balinese.

Mongolian



The Mongolian scale, a livelier version of the Chinese, is reminiscent of church and temple bells. In the mezzo & tenor sizes it contains all the notes of "Amazing Grace". Genghis Khan conquered an empire unmatched in size, yet never heard chimes as lovely as these. The Mongolian harmonizes nicely with the Aquarian.

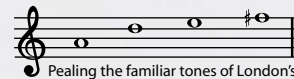
Aquarian



An original Larry Roark composition, the Aquarian scale mirrors the tranquil charm of an Alpine lake or stream. Its refreshing tones mix beautifully in different sizes and also blend well with the Mongolian.

Available in one size only

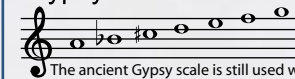
Westminster



Peeling the familiar tones of London's "Big Ben", this chime emulates the rich harmonics of cathedral bells. To create an ensemble, add the Pentatonic or perhaps Hawaiian.

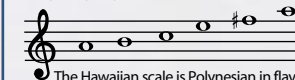
Exotic Tunings

Gypsy



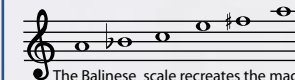
The ancient Gypsy scale is still used widely from northern Africa to the Baltic region. Its exotic mix of piquant strains and haunting melodies blends well with the Japanese.

Hawaiian



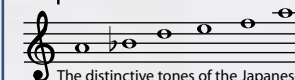
The Hawaiian scale is Polynesian in flavor, reminiscent of a tangy sweet & sour sauce and tropical island breezes. It combines the best of major and minor pentatonic scales. Mix Hawaiian with Pentatonic for a lovely multi-cultural effect.

Balinese



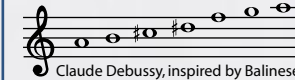
The Balinese scale recreates the magical strains of the Indonesian gamelon, at once joyous and plaintive. Balinese blends harmoniously with Chinese or Japanese.

Japanese



The distinctive tones of the Japanese scale are at once deeply soothing and provocative. Its drama complements the more light-hearted Chinese and Balinese.

Whole Tone



Claude Debussy, inspired by Balinese music at the 1896 Paris Exposition, began composing with this atonal scale; used, for example, in his piece, "La Mer". Later, television's original "Star Trek" used it in the "beaming up" sequences. TV and film scores frequently feature it for underwater, dream, and "flashback" scenes.

For maximum impact, display both families of sound. Customers typically gravitate to one or the other family. Giving them a meaningful choice in all pitch ranges sets Music of the Spheres® apart from all other chimes.

Handcrafted, One Chime at a Time.

These meticulously handcrafted wind chimes are precision-tuned to A440 (standard orchestral pitch). Our elegant design features central tube suspension, with smoothly polished tube ends to prevent cord abrasion. The tempered aluminum alloy tubing is custom-manufactured to our exacting specifications and will never rust. The tubing is coated with a sleek black corrosion protective finish that provides durability in all kinds of outdoor environments (acid rain, salt air, etc.).

Heavy gauge polished stainless steel rings provide sturdy support and enduring beauty. Our tough UV stabilized synthetic braid cordage is highly resistant to abrasion, ultra-violet degradation, rot and mildew. Solid UV stabilized polyethylene clappers provide superior tonal quality and outdoor durability.

Our unique interchangeable/ detachable windcatcher provides activity control: The chimes are designed to play in eight to ten mile per hour breezes.

All components are made in the USA. Handcrafted in Austin, Texas.

Experience the Stradivarius of Windchimes™

Meticulous craftsmanship translates into a 7-year warranty for our soprano, mezzo, alto, and Westminster chimes, plus a 15-year warranty for our tenor, bass, contrabass and basso profundo chimes.

Customer Service

Our drop-ship program and our 30-day unconditional return policy for your customers really helps close sales. In fact, our chimes are so popular we guarantee sales within 90 days of purchase or we will cheerfully give you a full refund.

Trade Dress

We restrict the discounting of our products to five percent (5%) off keystone (double) the current wholesale price, regardless of any discount you may receive from us or your distributor. This policy is adopted to protect the reputation of our product and our trademarks, to encourage retailers to invest in tangible and intangible services or promotional efforts that aid in competition with other brands of windchimes, and to restrict the free-ride some retailers might obtain from these services being offered by other non-discounting retailers, thereby increasing overall demand for our products.

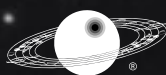
Legitimate short-term "sales" are authorized, but they are restricted to two (2) weeks' duration, and may only happen twice a calendar year. "Close out" sales are permitted for large ticket items, shopworn items, and seasonal locations. However, these sales must be shown to be tied to actual, legitimate circumstances. You must notify Music of the

Spheres,® Inc. & your distributor with your sale dates when you elect to use your sale periods.

To maintain the integrity of our trademarks and trade dress of Music of the Spheres,® Inc., internet and catalog advertising and sales are permitted only by dealers who have executed written agreements with Music of the Spheres,® Inc. and comply with all terms and conditions thereof.

We reserve the right to discontinue shipping products to customers who fail to abide by these restrictions.

"The Music of the Spheres® windchime design and trade dress is a registered trademark of Roark Licensing LLC, US Patent and Trademark Office Reg. No. 3,501,808."



Music of the Spheres® INC.
HANDCRAFTED IN AUSTIN TEXAS USA

the *Stradivarius* of windchimes®



The ancient Greek philosopher and mathematician Pythagoras first theorized that the stars and planets moved according to mathematical equations which corresponded to musical notes and thus produced a symphony, the "music of the spheres." The concept persisted. Shakespeare referenced it in *The Merchant of Venice*, Act V scene I: "... There's not the smallest orb which thou behold'st But in his motion like an angel sings...." Johannes Kepler's *Harmonices Mundi* (1619) discusses it. Babcock used the reference in 1901 in his popular hymn, *This Is My Father's World*, in the line, "All nature sings and 'round me rings / The music of the spheres."

In 1999, NASA and MIT determined a super massive black hole in the Perseus Cluster sounds a B-flat, albeit one too low for human ears. In a 2006 experiment, Greg Fox determined that orbits of celestial bodies could produce (through manipulation) sound. Thus modern thinkers have proven Pythagoras and Kepler correct.

We like to think that our windchimes capture the far-away vibrations of the heavenly bodies and translate them into harmonic intervals we can hear—"the music of the spheres." Even if they only turn the breeze into music, that's still a beautiful thing.