



**SWAN**<sup>®</sup>  
The Watering Company<sup>®</sup>



# PRODUCT GUIDE





For more than 90 years, Swan® has been one of the leading hose manufacturers in North America, committed to creating innovative and eco-friendly watering products that deliver the Earth's most precious resource in the ways it's needed most: to hydrate, feed, fill, clean or just have fun. The hoses in our namesake line fulfill our promise, offering top-quality products for all general-purpose uses at the best value for the consumer.

We are Swan Products®. The Watering Company®.

#### TABLE OF CONTENTS

Swan® - 1
Element® - 8
Goodyear® - 18
John Deere - 21
Accessories - 24
Contact - 29



JOHN DEERE



## PressureMASTER®

- 500 PSI burst strength
- Ultra durable and flexible garden hose for heavy-duty applications
- Ideal for the most demanding watering needs
- Unique octagonal shape for high kink resistance
- Jacket is oil-resistant for use in higher temperatures. It's also soft and abrasion-resistant, making it both flexible and durable.
- Patented Hose Armour® prevents kinking at the water source
- Crush-proof lead-free-aluminum couplings
- Limited lifetime warranty

Swan Sku #	CSN7958050	CSN7958100
UPC	0-78627-79582-1	0-78627-79584-5
I.D.	5/8 inches	5/8 inches
Length	50 feet	100 feet
Pack	5	3
Box Weight	42 lbs	48 lbs
Cube	2.62	2.62

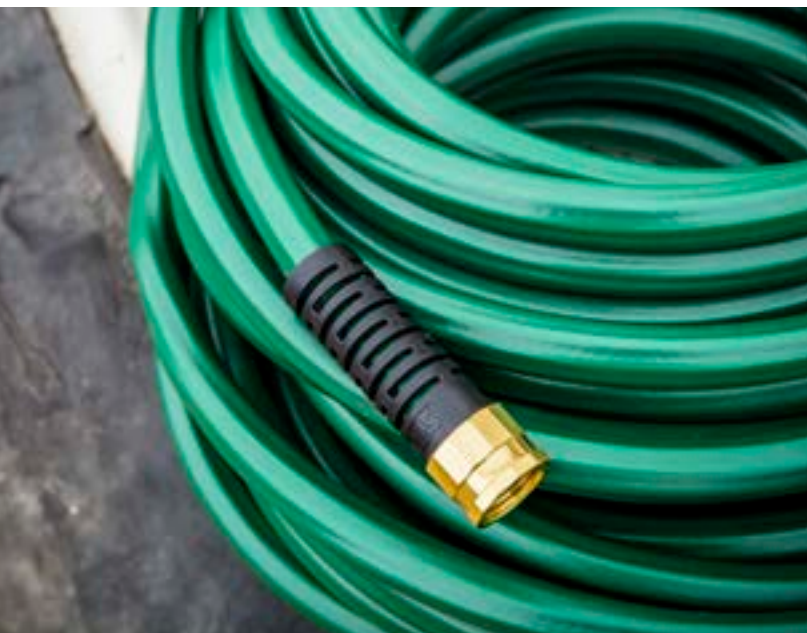


## ContractorPLUS®

- 400+ PSI burst strength
- Ultra-durable hose for moving high volumes of water over wide areas
- Ideal for construction sites and commercial applications
- Extra-large 3/4" diameter helps move up to 20% more water than standard 5/8" hoses
- Patented Hose Armour® prevents kinking at the water source
- Crush-proof lead-free-aluminum couplings
- Limited lifetime warranty

Swan Sku #	CSNCG58050	CSNCG58075	CSNCG58100
UPC	0-078627-58822-5	0-78627-58823-2	0-78627-58824-9
I.D.	5/8 inches	5/8 inches	5/8 inches
Length	50 feet	75 feet	100 feet
Pack	5	3	3
Box Weight	40 lbs	35.5 lbs	45.5 lbs
Cube	2.62	2.08	2.62

Swan Sku #	CSNCG34050	CSNCG34075	CSNCG34100
UPC	0-78627-34822-5	0-78627-34823-2	0-78627-34824-9
I.D.	3/4 inches	3/4 inches	3/4 inches
Length	50 feet	75 feet	100 feet
Pack	5	3	2
Box Weight	53 lbs	47.3 lbs	42 lbs
Cube	3.4	3.4	2.62





## Farm&RANCH®

- 400+ PSI burst strength
- Heavy-duty, ultra-durable hose for moving high volumes of water over wide areas
- Ideal for agricultural, construction and commercial applications
- Extra reinforcement for added burst resistance
- Abrasion-resistant jacket is easy to clean and helps prevent wear and tear
- Patented Hose Armour® prevents kinking at the water source
- Crush-proof lead-free-aluminum couplings
- Limited lifetime warranty

Swan Sku #	CSNFR58050	CSNFR58100
UPC	0-78627-58832-4	0-78627-58834-8
I.D.	5/8 inches	5/8 inches
Length	50 feet	100 feet
Pack	5	3
Box Weight	40 lbs	45.5 lbs
Cube	2.62	2.62



## FlexritePRO®

- 400+ PSI burst strength
- Ultra durable and flexible garden hose for heavy-duty applications
- Ideal for landscapers, contractors and other professionals, as well as home and yard tasks such as watering the lawn and connecting a power washer
- Thicker construction provides better burst performance, greater kink resistance and longer life
- Patented Hose Armour® prevents kinking at the water source
- Crush-proof lead-free-aluminum couplings
- Limited lifetime warranty

Swan Sku #	CSNFXP58025	CSNFXP58050	CSNFXP58075	CSNFXP58100
UPC	0-78627-67581-9	0-78627-67582-6	0-78627-67583-3	0-78627-67584-0
I.D.	5/8 inches	5/8 inches	5/8 inches	5/8 inches
Length	25 feet	50 feet	75 feet	100 feet
Pack	5	5	3	3
Box Weight	20.5 lbs	42 lbs	36.9 lbs	49.2 lbs
Cube	2.08	2.62	2.08	3.4





## Soft&SUPPLE®

- 400 PSI burst strength
- Heavy-duty garden hose with a soft, flexible outer jacket
- Ideal for active gardeners, as well as home and yard tasks such as watering the lawn and hosing down the deck
- Abrasion-resistant jacket is easy to clean and helps prevent wear and tear
- Patented Hose Armour® prevents kinking at the water source
- Crush-proof lead-free-aluminum couplings
- Limited lifetime warranty

Swan Sku #	CSNSS58025	CSNSS58050	CSNSS58075	CSNSS58100
UPC	0-78627-58331-2	0-78627-58332-9	0-78627-58333-6	0-78627-58334-3
I.D.	5/8 inches	5/8 inches	5/8 inches	5/8 inches
Length	25 feet	50 feet	75 feet	100 feet
Pack	5	5	3	2
Box Weight	21 lbs	38 lbs	33 lbs	30 lbs
Cube	1.5	2.62	2.08	2.08

Swan Sku #	CSNSS34050	CSNSS34075	CSNSS58325 Bulk	CSNSS34250 Bulk
UPC	0-78627-34332-9	0-78627-34333-6	0-78627-58335-0	0-78627-
I.D.	3/4 inches	3/4 inches	5/8 inches	3/4 inches
Length	50 feet	75 feet	325 feet	250 feet
Pack	5	3	1	1
Box Weight	53 lbs	47.3 lbs	49 lb reel	49 lb reel
Cube	3.4	3.4	3.5	3.5





**CoreFUSION™**  
Reinforcement rods run throughout the entire length of this ultra durable hose, eliminating kinks and increasing strength up to 35% compared with other hoses.



**Continuous Flow™ Filament Keeps Water Flowing to Prevent Kinks**

## PROScape®

- 400 PSI burst strength
- Heavy-duty kink-free garden hose
- Ideal for gardeners, landscapers, serious DIYers and other related professionals
- Features CoreFUSION™ Technology: reinforcement rods composed of unique proprietary compound that eliminate kinking and increase strength up to 35%
- Abrasion-resistant jacket is easy to clean and helps prevent wear and tear
- Includes new Ergonomic Female Grip for easy faucet attachment
- Ergonomic Female Grip plus lead-free-aluminum female coupling are crush-proof up to 1,000 PSI
- Limited lifetime warranty

Swan Sku #	CSNPSF58050	CSNPSF58100
UPC	0-78627-04290-1	0-78627-04291-8
I.D.	5/8 inch	5/8 inch
Length	50 feet	100 feet
Pack	5	3
Box Weight	35 lbs	42 lbs
Box Cube	2.62	2.62

## XFlex™ Heavy Duty Hose

- 400 PSI burst strength
- Heavy-duty kink-resistant hose that goes flat when water is off
- Ideal for landscaping and active gardening
- Includes XFlex™ Continuous Flow™ Filament that keeps water flowing to prevent kinks
- Ultra-compact, making it easy to transport, coil and store
- Includes new Ergonomic Grips for easy faucet attachment
- SpinMALE™ technology allows male coupling to rotate 360 degrees to attach accessories without twisting them on or turning the hose
- Grips plus lead-free-aluminum couplings are crush-proof up to 1,500 PSI
- Limited lifetime warranty

Swan Sku #	CSNXF58025	CSNXF58050	CSNXF58100
UPC	0-78627-04359-5	0-78627-04360-1	0-78627-04361-8
I.D.	5/8 inch	5/8 inch	5/8 inch
Length	25 feet	50 feet	100 feet
Pack	6	6	4
Box Weight	16 lbs	29 lbs	40 lbs
Box Cube	1.69	1.13	2.31



**Stores Flat!**



## WeatherFLEX®

- 300 PSI burst strength
- Ideal for home and yard tasks such as watering the lawn
- Abrasion-resistant jacket is easy to clean and helps prevent wear and tear
- Patented Hose Armour® prevents kinking at the water source
- Crush-resistant aircraft-grade-aluminum couplings
- 7-year warranty

Swan Sku #	CSNWF58025	CSNWF58050	CSNWF58060
UPC	0-78627-58221-6	0-78627-58222-3	0-78627-58226-1
I.D.	5/8 inches	5/8 inches	5/8 inches
Length	25 feet	50 feet	60 feet
Pack	5	5	5
Box Weight	16.5 lbs	28 lbs	30.5 lbs
Cube	1.5	2.62	2.62



## Deck&PATIO®

- 300 PSI burst strength
- Medium-duty garden hose colored dark brown to blend with your deck
- Ideal for deck and patio use
- Patented Hose Armour® prevents kinking at the water source
- Crush-resistant aircraft-grade-aluminum couplings
- 7-year warranty

Swan Sku #	CSN2004050
UPC	0-78627-20040-0
I.D.	5/8 inch
Length	50 feet
Pack	5
Box Weight	29 lbs
Box Cube	2.62

Swan Sku #	CSNWF58075	CSNWF58100	CSNHR58150
UPC	0-78627-58223-0	0-78627-58224-7	0-78627-58720-4
I.D.	5/8 inches	5/8 inches	5/8 inch
Length	75 feet	100 feet	150 feet
Pack	3	3	2
Box Weight	25 lbs	37.5 lbs	35.5 lbs
Cube	2.08	2.62	2.63

150 ft. BEST FOR HOSE REELS

Our WeatherFLEX® Hose Reel hose is best paired with:

## Universal+® 10 ft Leader Hose

Swan Sku #: CELUN12010  
See page 13 for details





## FairLAWN®

- 250 PSI burst strength
- Lightweight garden hose for low-pressure needs such as watering delicate plants
- Maintains pressure at reduced flow rate to conserve water
- High-impact plastic female coupling easily attaches to water source
- Abrasion-resistant jacket is easy to clean and helps prevent wear and tear

Swan Sku #	CSNFA12025	CSNFA12050	CSNFA12100
UPC	0-78627-01812-8	0-78627-01912-5	0-78627-12124-8
I.D.	1/2 inches	1/2 inches	1/2 inches
Length	25 feet	50 feet	100 feet
Pack	10	5	3
Box Weight	22 lbs	21 lbs	24 lbs
Cube	1.64	1.64	1.87



## Utility Hose

- 200 PSI burst strength
- Ideal for small jobs in and around the house, garden and RV
- Excellent as an extension to a garden hose, a reel-connector hose and a dehumidifier drain hose
- Compatible with standard faucets, hose reels, sprinklers and soaker-hose systems
- 5-year warranty

Swan Sku #	CSN58R015FM
UPC	0-78627-58737-2
I.D.	5/8 inch
Length	15 feet
Pack	20
Box Weight	36 lbs
Box Cube	2.08







## Female and Male Hose Reel Leader Hose

- 300 PSI burst strength
- Female-male connectors
- Ideal for all short-length hose applications
- Excellent as a reel-connector hose with female connectors
- High burst pressure for long-term durability
- Crush-resistant aluminum couplings

Swan Sku #	CLOLH5806FM
UPC	0-78627-01717-6
I.D.	5/8 inch
Length	6 feet
Pack	12
Box Weight	14 lbs
Box Cube	1.27



## Female and Female Hose Reel Leader Hose

- 300 PSI burst strength
- Female-female connectors
- Ideal for all short-length hose applications
- Excellent as a reel-connector hose with male connectors
- High burst pressure for long-term durability
- Crush-resistant aluminum couplings

Swan Sku #	CSNLHFF5806CC
UPC	0-78627-01718-3
I.D.	5/8 inch
Length	6 feet
Pack	12
Box Weight	14 lbs
Box Cube	1.27



*the greener way to water®*

## ELEMENT® Premium Hoses

Better hoses for a better world. That's the promise of the Element® brand. Manufactured by Swan®, Element® offers cutting-edge products that benefit both you and the environment. Featuring thicker hoses with greater kink-resistance and superior couplings, Element® products are also lead-free, phthalate-free and drinking-water-safe. That makes them the ideal watering solution not only for extreme DIYers and demanding contractors, but also for organic farmers and health-conscious consumers.

Element®—the greener way to water®.



## VIPER®

- 600 PSI burst strength
- Heavy-duty rubber hose considered the toughest on the market
- Ideal for the most rigorous and demanding hose uses
- Replaces both traditional black and red rubber hoses
- 2X stronger and 40% lighter than standard rubber hoses
- Flexible from -40° Fahrenheit up to hot water at 165° Fahrenheit
- Octagonal shape combined with unique rubber blend make it extremely kink resistant
- Patented Hose Armour® prevents kinking at the water source
- Extra-large, crush-proof aluminum couplings can withstand being run over by heavy machinery
- Meets lead-free standards under Federal Safe Drinking Water Act
- Compliant with California's strict phthalate-content standards
- Limited lifetime warranty

Swan Sku #	CELPV58025	CELPV58050	CELPV58100
UPC	0-78627-04265-9	0-78627-04259-8	0-78627-04260-4
I.D.	5/8 inches	5/8 inches	5/8 inches
Length	25 feet	50 feet	100 feet
Pack	8	4	2
Box Weight	32 lbs	32 lbs	32 lbs
Cube	2.62	2.83	2.83

Swan Sku #	CELPV34050	CELPV34100
UPC	0-78627-04261-1	0-78627-04262-8
I.D.	3/4 inches	3/4 inches
Length	50 feet	100 feet
Pack	4	2
Box Weight	35.5 lbs	35.5 lbs
Cube	2.62	2.62



## MAXLite® Premium Rubber+® Hoses

- 400+ PSI burst strength
- Exclusive rubber formula makes it 2X stronger and 40% lighter than standard rubber hoses
- Flexible from -40° Fahrenheit up to hot water at 165° Fahrenheit
- Patented Hose Armour® prevents kinking at the water source
- Extra-large, crush-proof aluminum couplings
- Meets lead-free standards under Federal Safe Drinking Water Act
- Compliant with California's strict phthalate-content standards
- Limited lifetime warranty



### Premium Rubber+®

- Powerful and strong yet easy to handle
- Ultra lightweight making it ideal for home and commercial use in all weather conditions

Swan Sku #	CELSGC58025	CELSGC58050	CELSGC58075	CELSGC58100
UPC	0-78627-03604-7	0-78627-03605-4	0-78627-03606-1	0-78627-03607-8
I.D.	5/8 inches	5/8 inches	5/8 inches	5/8 inches
Length	25 feet	50 feet	75 feet	100 feet
Pack	8	4	3	2
Box Weight	29.6 lbs	29.2 lbs	33 lbs	29.6 lbs
Cube	2.8	2.74	3.10	2.74

### Hot Water Rubber+®

- Maintains its shape, flexibility and strength even at high water temperatures
- Ultra lightweight making it ideal for home and commercial use in all weather conditions

Swan Sku #	CELSGHW58025	CELSGHW58050
UPC	0-78627-04123-2	0-78627-04001-3
I.D.	5/8 inches	5/8 inches
Length	25 feet	50 feet
Pack	8	4
Box Weight	29.6 lbs	29.2 lbs
Cube	2.8	2.74



Swan Sku #	CELSGC34050
UPC	0-78627-04102-7
I.D.	3/4 inch
Length	50 feet
Pack	4
Box Weight	45 lbs
Box Cube	3.6

Swan Sku #	CELSGHW34050
UPC	0-78627-04103-4
I.D.	3/4 inch
Length	50 feet
Pack	4
Box Weight	45 lbs
Box Cube	3.6

### Premium Rubber+®

Swan Sku #	CELSGG12050	CELSGG12100
UPC	0-78627-03602-3	0-78627-03603-0
I.D.	1/2 inches	1/2 inches
Length	50 feet	100 feet
Pack	4	2
Box Weight	23.4 lbs	23.4 lbs
Cube	1.67	1.67





## CoolTOUCH®

- 400 PSI burst strength
- Heavy-duty garden hose that maintains its shape, strength and flexibility even at high temperatures
- **Ideal for use in hot climates**
- Proprietary compound prevents hose from kinking or bursting in extreme heat
- Proprietary pigments in hose's color reduce its surface temperature by up to 20 degrees
- Patented Hose Armour® prevents kinking at the water source
- Extra-large, crush-proof aluminum couplings can withstand being run over by heavy machinery
- Meets lead-free standards under Federal Safe Drinking Water Act
- Compliant with California's strict phthalate-content standards
- Limited lifetime warranty

Swan Sku #	CELCT58050	CELCT58100
UPC	0-78627-04264-2	0-78627-04268-0
I.D.	5/8 inches	5/8 inches
Length	50 feet	100 feet
Pack	4	3
Box Weight	30.2 lbs	44.8 lbs
Cube	2.74	2.74



## ThermaFLEX®

- 400 PSI burst strength
- Heavy-duty garden hose that maintains its shape, strength and flexibility even at freezing temperatures
- **Ideal for use in cold climates**
- While PVC hoses harden and crack at 50° Fahrenheit and lower, this unique compound stays flexible and prevents bursting when leaving hose outside during winter
- Patented Hose Armour® prevents kinking at the water source
- Extra-large, crush-proof aluminum couplings can withstand being run over by heavy machinery
- Meets lead-free standards under Federal Safe Drinking Water Act
- Compliant with California's strict phthalate-content standards
- Limited lifetime warranty

Swan Sku #	CELT58050	CELT58100
UPC	0-78627-04263-5	0-78627-04269-7
I.D.	5/8 inches	5/8 inches
Length	50 feet	100 feet
Pack	4	3
Box Weight	30.2 lbs	44.8 lbs
Cube	2.74	2.74





## ContractorFARM®

- 400+ PSI burst strength
- Premium-duty hose built to withstand daily rigors of construction and farm work
- Capable of supplying high volumes of water to meet commercial and agricultural needs
- Ideal for contractors, farmers and ranchers for tasks such as washing dirt and debris from construction sites, planting trees and cleaning livestock
- Heavyweight reinforcement at high-pressure areas
- Hose's octagonal shape and Patented Hose Armour® prevent kinking from end to end
- Oversized female coupling easily connects to water source without any tools in any temperature
- Extra-large, crush-proof aluminum couplings can withstand being run over by heavy machinery
- Meets lead-free standards under Federal Safe Drinking Water Act
- Compliant with California's strict phthalate-content standards
- Limited lifetime warranty

Swan Sku #	CELCF58050	CELCF58075	CELCF58100
UPC	0-78627-58872-0	0-78627-58873-7	0-78627-58874-4
I.D.	5/8 inches	5/8 inches	5/8 inches
Length	50 feet	75 feet	100 feet
Pack	5	3	3
Box Weight	39.5 lbs	33 lbs	42.8 lbs
Cube	2.62	2.3	2.62

Swan Sku #	CELCF34050	CELCF34075	CELCF34100
UPC	0-78627-34872-0	0-78627-34873-7	0-78627-34874-4
I.D.	3/4 inches	3/4 inches	3/4 inches
Length	50 feet	75 feet	100 feet
Pack	5	3	2
Box Weight	56.15 lbs	51 lbs	44.5 lbs
Cube	3.40	3.4	2.62



## CommercialGRADE®

- 500+ PSI burst strength
- Premium-duty garden hose with unique heavy-duty construction and high kink resistance
- Ideal for contractors and demanding DIY projects
- Best performance and durability over long periods of time
- Heavyweight reinforcement at high-pressure areas
- Extra-large, crush-proof female coupling easily connects to water source without any tools in any temperature
- Patented Hose Armour® prevents kinking at the water source
- Crush-proof aluminum couplings can withstand being run over by heavy machinery
- Meets lead-free standards under Federal Safe Drinking Water Act
- Compliant with California's strict phthalate-content standards
- Limited lifetime warranty

Swan Sku #	CELIH58025CC	CELIH58050	CELIH58075	CELIH58100
UPC	0-78627-58881-2	0-78627-58882-9	0-78627-58883-6	0-78627-58884-3
I.D.	5/8 inches	5/8 inches	5/8 inches	5/8 inches
Length	25 feet	50 feet	75 feet	100 feet
Pack	9	5	3	3
Box Weight	32.2 lbs	33.8 lbs	30.1 lbs	39.9 lbs
Cube	2.66	2.62	2.3	2.62





## MaxFLEX®

- 500+ PSI burst strength
- Heavy-duty ultra-versatile garden hose
- Ideal for a variety of tasks such as gardening, landscaping and pressure-washing in all climates
- Made of an exclusive copolymer with Lay-Flat Technology® —Snap Back Into Shape! for maximum durability, flexibility and kink resistance
- Heavyweight reinforcement, ideal for high-pressure areas
- Patented Hose Armour® prevents kinking at the water source
- Extra-large, crush-proof aluminum couplings
- Abrasion-resistant jacket helps prevent wear and tear
- Meets lead-free standards under Federal Safe Drinking Water Act
- Compliant with California's strict phthalate-content standards
- Limited lifetime warranty

Swan Sku #	CELMF58050CC	CELMF58100CC
UPC	0-78627-04343-4	0-78627-04344-1
I.D.	5/8 inches	5/8 inches
Length	50 feet	100 feet
Pack	5	3
Box Weight	39.2 lbs	45.1 lbs
Cube	3.11	3.11



Available in Green and Blue!

## ULTRALite®

- 400+ PSI burst strength
- Heavy-duty hose that's both extremely lightweight and compact
- Ideal for active gardeners, as well as home and yard tasks such as watering plants and shrubs
- Made of proprietary compound that's both incredibly durable and kink resistant: Hose uncoils quickly and easily and lies straight when in use
- Patented Hose Armour® prevents kinking at the water source
- Crush-resistant aircraft-grade-aluminum couplings
- Easy to transport, coil and store
- Meets lead-free standards under Federal Safe Drinking Water Act
- Compliant with California's strict phthalate-content standards
- Limited lifetime warranty

Swan Sku #	CELUL12025CC	CELUL12050CC
UPC	0-78627-04316-8	0-78627-04317-5
I.D.	1/2 inches	1/2 inches
Length	25 feet	50 feet
Pack	8	4
Box Weight	25.52 lbs	21.92 lbs
Cube	1.53	1.53





## Universal+®

- 400+ PSI burst strength
- Crush-resistant female couplings on both ends and a male/male adaptor connected to one end for use with any combination of connections
- Heavy-duty garden hose considered the most flexible on the market
- Ideal for use on various hose reels, as a soaker system leader hose, as a dehumidifier drain hose and for tasks such as small-space watering
- Made of unique compound that prevents kinking
- Patented Hose Armour® prevents kinking at the water source
- Meets lead-free standards under Federal Safe Drinking Water Act
- Compliant with California's strict phthalate-content standards
- Limited lifetime warranty

Swan Sku #	CELUN12010
UPC	0-78627-04258-1
I.D.	1/2 inch
Length	10 feet
Pack	10
Box Weight	12.1 lbs
Cube	1.0



Includes male adapter for any combination of connections



## Green&GROW®

- 300 PSI burst strength
- Medium-duty garden hose that's free from harmful chemicals
- Ideal for tasks such as organic gardening, watering fruit trees and filling the kids' pool and bird bath
- Durable, flexible and lightweight
- Patented Hose Armour® prevents kinking at the water source
- Meets lead-free standards under Federal Safe Drinking Water Act
- Compliant with California's strict phthalate-content standards
- 10-year warranty

Swan Sku #	CELGG58050	CELGG58100
UPC	0-78627-58292-6	0-78627-58294-0
I.D.	5/8 inches	5/8 inches
Length	50 feet	100 feet
Pack	5	3
Box Weight	29.5 lbs	32 lbs
Cube	2.62	2.62







## RV&Marine+®

- 400+ PSI burst strength
- Heavy-duty multipurpose hose for boats and RVs
- Ideal for tough cleaning jobs or use as a potable-water supply line
- Ultra lightweight, easy to transport to and from dock or campsite
- Unique Lay-Flat Technology™ quickly snaps hose back into shape for maximum durability, flexibility and kink resistance. Also allows for easy storage.
- Special compound offers high UV resistance to prevent cracking and splitting
- Patented Hose Armour® prevents kinking at the water source
- Oversized crush-proof aluminum couplings
- Meets lead-free standards under Federal Safe Drinking Water Act
- Compliant with California's strict phthalate-content standards
- Limited lifetime warranty

Swan Sku #	CELULMRV12025	CELULMRV12050
UPC	0-78627-04131-7	0-78627-04106-5
I.D.	1/2 inches	1/2 inches
Length	25 feet	50 feet
Pack	8	4
Box Weight	23.4 lbs	23.4 lbs
Cube	1.53	1.53



## RV&Marine®

- 300+ PSI burst strength
- Medium-duty multipurpose hose for boats and RVs
- Ideal for tough cleaning jobs or use as a potable-water supply line
- Built with a quality compound material that's highly durable and flexible
- Lightweight, easy to transport to and from dock or campsite
- Provides water with no added chemical odors or tastes
- Patented Hose Armour® prevents kinking at the water source
- Crush-resistant octagonal-shaped aluminum couplings
- Meets lead-free standards under Federal Safe Drinking Water Act
- Compliant with California's strict phthalate-content standards
- Limited lifetime warranty

Swan Sku #	CELMRV12025	CELMRV12050	CELMRV58025	CELMRV58050
UPC	0-78627-12631-1	0-78627-12632-8	0-78627-58631-3	0-78627-58632-0
I.D.	1/2 inches	1/2 inches	5/8 inches	5/8 inches
Length	25 feet	50 feet	25 feet	50 feet
Pack	5	5	5	5
Box Weight	12.7 lbs	22.15 lbs	16 lbs	29 lbs
Cube	0.93	1.79	1.50	2.62

Swan Sku #	CELMRV12004	CELMRV12010
UPC	0-78627-04120-1	0-78627-04121-8
I.D.	1/2 inches	1/2 inches
Length	4 feet	10 feet
Pack	12	10
Box Weight	3.33 lbs	8.33 lbs
Cube	.7	1.25

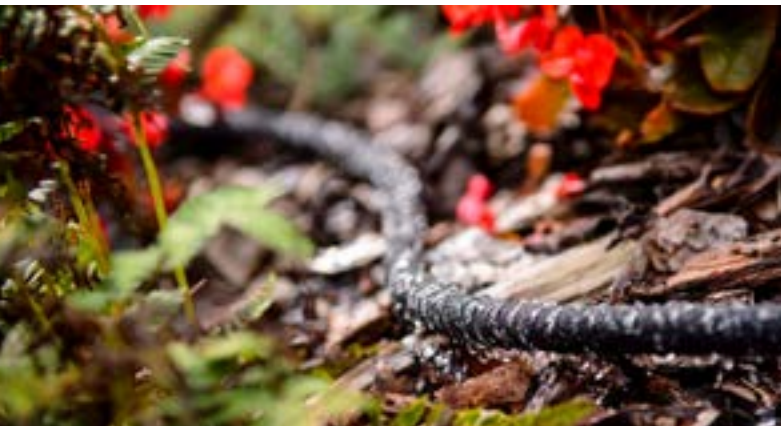




## SoakerPRO®

- Soaker hose with pores that slowly release water directly to plants' roots, reducing evaporation for more efficient watering
- Ideal for flowerbeds, gardens and large landscaping projects
- Weeps water at a rate of 0.5 gallon–1 gallon per foot per hour on ground level
- Patented blue water restrictor in female connectors controls water pressure/flow, reducing water consumption
- Made of 65% recycled rubber and uses up to 70% less water than a conventional sprinkler
- Lightweight, easy to wind around plants and set under soil or mulch
- Protects delicate flowers, foliage and vegetables from direct contact with damaging water pressure
- Meets lead-free standards under Federal Safe Drinking Water Act
- Compliant with California's strict phthalate-content standards
- 7-year warranty

Swan Sku #	CELSP38025	CELSP38050	CELSP38075	CELSP38250
UPC	0-78627-99381-4	0-78627-99382-1	0-78627-99383-8	0-78627-99505-4
I.D.	3/8 inches	3/8 inches	3/8 inches	3/8 inches
Length	25 feet	50 feet	75 feet	250 feet
Pack	12	8	5	1
Box Weight	21 lbs	24.7 lbs	22.38 lbs	13.5 lbs
Cube	1.94	1.94	1.94	.85



## Soaker System® with EZ-Connect® Pieces

- Soaker hose system for customized watering of small- to medium-sized flowerbeds, gardens and landscaped areas
- Includes soaker hose and EZ-Connect® System Connectors.
  - **50 ft.** soaker hose includes 2 male and 2 female connectors for making one length or two separate soaker hoses.
  - **75 ft.** soaker hose includes 2 male, 2 female and a feeder connector.
- Weeps water at a rate of 0.5 gallon–1 gallon per foot per hour on ground level
- Made of 65% recycled rubber and uses up to 70% less water than a conventional sprinkler
- Connectors are made of durable, high-impact plastic and are quick and easy to install: simply cut a hose and push the connectors in.
- Exclusive Friction-Fit® connection keeps them secure
- Patented blue water restrictor in female connectors controls water pressure/flow, reducing water consumption
- Meets lead-free standards under Federal Safe Drinking Water Act
- Compliant with California's strict phthalate-content standards
- 7-year warranty

Swan Sku #	CELSPA38050CC	CELSPA38075CC
UPC	0-78627-04324-3	0-78627-04325-0
I.D.	3/8	3/8
Length	50 feet	75 feet
Pack	6	4
Box Weight	17.1 lbs	14 lbs
Cube	1.35	1.35





## SoakerPRO System®

- Soaker system kit for customized watering of flowerbeds, gardens and large landscaping projects
- Includes 100-ft. soaker hose and 20 EZ-Connect® System connectors: 2 female feeder connectors, 6 T connectors, 4 female connectors, 4 male connectors and 4 plugs, with comprehensive instructions for easy set up
- Soaker hose weeps water at a rate of 0.5 gallon–1 gallon per foot per hour on ground level directly to plants’ roots, reducing evaporation for more efficient watering
- Hose is made of 65% recycled rubber and uses up to 70% less water than a conventional sprinkler
- Connectors are made of durable, high-impact plastic and are quick and easy to install: simply cut a hose and push the connectors in. An exclusive Friction-Fit connection keeps them secure without twisting or clicking.
- Patented blue water restrictor in female connectors controls water flow and reduces water consumption
- Meets lead-free standards under Federal Safe Drinking Water Act
- Compliant with California’s strict phthalate-content standards
- 7-year warranty

Swan Sku #	CELSPAK38100CC
UPC	0-78627-99386-9
I.D.	3/8 inch
Length	100 feet
Pack	3
Box Weight	22 lbs
Cube	1.6

Additional  
**EZ-Connect®**  
 pieces sold separately.  
 See page 28 for details.



## Sprinkler+®

- Ideal for watering lawns and narrow garden areas
- Six holes per foot create a uniform wall of soaking mist
- Durable, long-lasting couplings with capped male end for easy draining
- Easy to unroll and roll for storage
- Meets lead-free standards under Federal Safe Drinking Water Act
- 7-year warranty

Swan Sku #	CELTECV025	CELTECV050
UPC	0-78627-99126-1	0-78627-99127-8
I.D.	N/A	N/A
Length	25 feet	50 feet
Pack	10	10
Box Weight	14.4 lbs	26.6 lbs
Cube	0.666	1.187



**GOODYEAR**

Made exclusively by Swan<sup>®</sup>, Goodyear<sup>®</sup>

hoses are the go-to choice for commercial applications.

They're heavy-duty, built to last and have the high performance required by hardworking farmers, contractors and other professionals. They also feature the extra-large crush-proof couplings and supreme scuff-resistance pros prefer. Extreme temperatures? Not an issue. Goodyear<sup>®</sup> hoses remain flexible down to -40° F. And, of course, they are made from rubber, the hallmark of the Goodyear<sup>®</sup> brand.



## Premium Rubber+®

- 400+ PSI burst strength
- Premium-duty hose for demanding commercial applications
- Ideal for home and garden use, agricultural applications and commercial kitchens
- Exclusive rubber formula makes it 2X stronger and 40% lighter than standard rubber hoses
- Remains flexible down to -40° Fahrenheit
- Remains pliable for small jobs in tight areas
- Patented Hose Armour™ prevents kinking at the water source
- Extra-large, crush-proof aircraft-grade-aluminum couplings can withstand being run over by heavy machinery
- Meets lead-free standards under Federal Safe Drinking Water Act
- Compliant with California's strict phthalate-content standards
- Limited lifetime warranty

Swan Sku #	CGYSGC58050
UPC	0-78627-03702-0
I.D.	5/8 inches
Length	50 feet
Pack	4
Box Weight	29.2 lbs
Cube	2.74



## Hot Water Rubber+®

- 400+ PSI burst strength
- Premium-duty rubber hose that maintains its shape, flexibility and strength even at high water temperatures
- Flexible from -40° Fahrenheit up to hot water at 165° Fahrenheit
- Ultra lightweight making it ideal for home and commercial use in all weather conditions
- Exclusive rubber formula makes it 2X stronger and 40% lighter than standard rubber hoses
- Patented Hose Armour® prevents kinking at the water source
- Extra-large, crush-proof aluminum couplings can withstand being run over by heavy machinery
- Meets lead-free standards under Federal Safe Drinking Water Act
- Compliant with California's strict phthalate-content standards
- Limited lifetime warranty

Swan Sku #	CGYSGHW58050	CGYSGHW34050
UPC	0-78627-03704-4	0-78627-04210-9
I.D.	5/8 inches	3/4 inches
Length	50 feet	50 feet
Pack	4	4
Box Weight	29.2 lbs	45 lbs
Cube	2.74	3.06



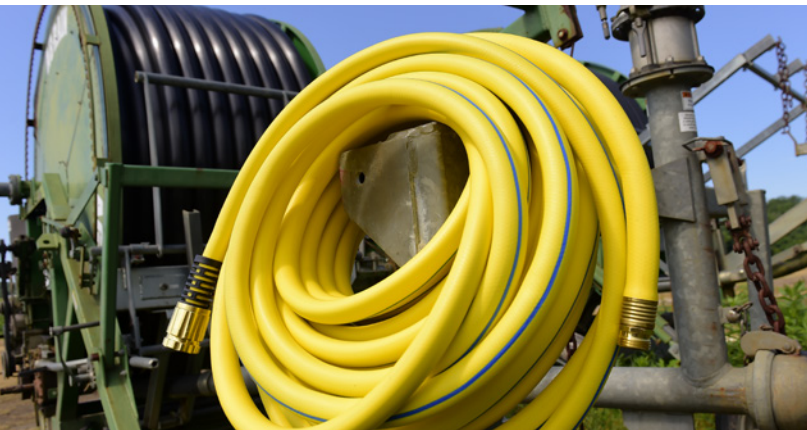
# PREMIUM RUBBER HOSES



## High Visibility Rubber+®

- 400+ PSI burst strength
- Ultra heavy-duty rubber hose
- Ideal for jobsite applications and commercial uses where high visibility is important
- Exclusive rubber formula makes it 2X stronger and 40% lighter than standard rubber hoses
- Remains flexible down to -40° Fahrenheit
- Extra-large 3/4" diameter helps move up to 20% more water than standard 5/8" hoses
- Extra-large, crush-proof aircraft-grade-aluminum couplings can withstand being run over by heavy machinery
- Patented Hose Armour® prevents kinking at the water source
- Meets lead-free standards under Federal Safe Drinking Water Act
- Compliant with California's strict phthalate-content standards
- Limited lifetime warranty

Swan Sku #	CGYSGY34050	CGYSGY58050	CGYSGY58100
UPC	0-78627-04209-3	0-78627-04220-8	0-78627-04221-5
I.D.	3/4 inches	5/8 inches	5/8 inches
Length	50 feet	50 feet	100 feet
Pack	4	4	2
Box Weight	41.08 lbs	29.2 lbs	29.2 lbs
Cube	3.08	2.62	2.61





JOHN DEERE

**John Deere Hoses:** Integrity, quality, commitment and innovation. These are the values at the heart of two best-in-class brands: Swan and John Deere. Now joined in a licensing partnership, Swan and John Deere are bringing best-in-class hoses to the marketplace. Designed in the iconic colors of the John Deere brand and featuring its well-known leaping-deer trademark, these hoses showcase the greatest advancements in garden hose technology to date. This includes Swan's proprietary CoreFUSION™ Technology in the PVC line and powerful compound in the premium rubber line. They're the ultimate choice in kink-resistance and strength, for every watering need.



## CoreFUSION® Hose

- 500 PSI burst strength
- Heavy-duty kink-free garden hose
- Ideal for gardeners, landscapers, serious DIYers and other related professionals
- Features CoreFUSION™ technology: reinforcement rods composed of unique proprietary compound that eliminate kinking and increase strength up to 35%
- Abrasion-resistant jacket is easy to clean and helps prevent wear and tear
- Includes new Ergonomic Female Grip for easy faucet attachment
- Lead-free-aluminum female couplings are crush-proof up to 1,000 PSI
- Features iconic John Deere colors and trademark
- Limited lifetime warranty

Swan Sku #	CJDF58050	CJDF58100
UPC	0-78627-04319-9	0-78627-04321-2
I.D.	5/8 inches	5/8 inches
Length	50 feet	100 feet
Pack	5	3
Box Weight	38.8 lbs	46.5 lbs
Cube	2.62	2.62



## Lay-Flat Technology® Hose *Snaps Back into Shape!*®

- 500 PSI burst strength
- Heavy-duty garden hose considered the “the best hose you’ll ever own”
- Ideal for a variety of tasks such as gardening, landscaping and pressure-washing in all climates
- Made of an exclusive copolymer with Lay-Flat Technology® that makes it the best flexible hose and best no-kink garden hose
- Heavyweight reinforcement at high-pressure areas
- 20% lighter than similar garden hoses
- Patented Hose Armour® prevents kinking at the water source with extra-large, crush-proof aluminum couplings that can withstand being run over by heavy machinery
- Abrasion-resistant jacket is easy to clean and helps prevent wear and tear
- Limited lifetime warranty

Swan Sku #	CJDMF34050	CJDMF34100
UPC	0-78627-04322-9	0-78627-04323-6
I.D.	3/4 inches	3/4 inches
Length	50 feet	100 feet
Pack	5	2
Box Weight	51.5 lbs	39.8 lbs
Cube	3.44	2.62



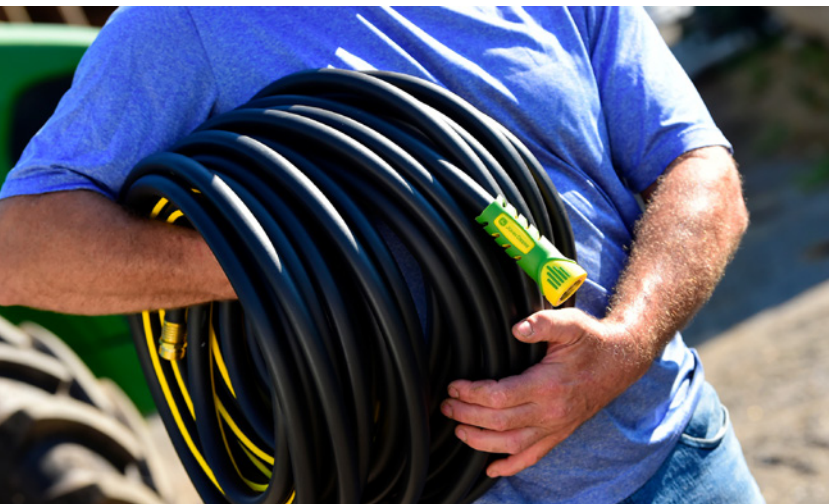




## Rubber Hose

- 500 PSI burst strength
- Premium rubber garden hose that's powerful and strong yet easy to handle
- Ideal for commercial and home use in all weather conditions
- Exclusive rubber formula makes it 2X stronger and 40% lighter than standard rubber hoses
- Flexible to -40 degrees Fahrenheit
- Includes new Ergonomic Female Grip for easy faucet attachment
- Lead-free-aluminum female coupling are crush-proof up to 1,000 PSI
- Features iconic John Deere yellow and trademark
- Limited lifetime warranty

Swan Sku #	CJDVP58050	CJDVP58100
UPC	0-78627-04350-2	0-78627-04351-9
I.D.	5/8 inches	5/8 inches
Length	50 feet	100 feet
Pack	4	2
Box Weight	32 lbs	29.5 lbs
Cube	2.66	2.66





# Accessories





## Adjustable Spray Nozzle

- Easily switches from delicate spray to strong stream by turning nozzle end
- Ideal for watering delicate plants and tackling tough cleaning jobs
- Made of durable, lightweight aluminum for clean metal look and lifetime use

Swan Sku #	CSNAN10006	UPC	0-78627-03100-4
<b>Master Pack</b>	12	<b>Inner Pack</b>	6
Master Box Weight	4.5 lbs	Inner Box Weight	1.1 lbs
Master Box Cube	.1	Inner Box Cube	.1

### Swan Nozzle Series - Common Features

- Durable ABS/TPR lightweight construction
- Ergonomic handle design for comfort grip
- Insulated for hand warmth
- Convenient thumb wheel for water-volume adjustment
- **Compliant with California's strict phthalate-content standards**
- Designed for cold water use

## AdjustablePRO® Spray Nozzle

- Easily switches from delicate spray to strong stream by turning nozzle end
- Ideal for watering delicate plants, covering lawn areas and tackling tough cleaning jobs

Swan Sku #	CSNAN10606	UPC	0-78627-03106-6
<b>Master Pack</b>	12	<b>Inner Pack</b>	6
Master Box Weight	12.5 lbs	Inner Box Weight	3.1 lbs
Master Box Cube	.3	Inner Box Cube	.1



## SoakerFAN® Spray Nozzle

- Nozzle with mister • Trilobular-shaped head delivers gentle, evenly dispersed mist at a wide angle

Swan Sku #	CSNSF10206	UPC	0-78627-03102-8
<b>Master Pack</b>	12	<b>Inner Pack</b>	6
Master Box Weight	11.9 lbs	Inner Box Weight	2.9 lbs
Master Box Cube	.6	Inner Box Cube	.2



## 9-Pattern® Sprayer

- Nozzle with nine spray patterns • Ideal for watering delicate plants, covering lawn areas and tackling tough cleaning jobs

Swan Sku #	CSNST10506	UPC	0-78627-04341-0
<b>Master Pack</b>	12	<b>Inner Pack</b>	6
Master Box Weight	12.8 lbs	Inner Box Weight	3.2 lbs
Master Box Cube	.6	Inner Box Cube	.2



## 18" 9-Pattern® Wand

- 18"-long with nine spray patterns
- Easily switches from fine spray to jet stream with a simple turn of the dial
- Ideal for watering delicate hanging plants and watering/cleaning tasks in remote places

Swan Sku #	CSNTW1806	UPC	0-78627-03186-8
<b>Master Pack</b>	12	<b>Inner Pack</b>	6
Master Box Weight	17.8 lbs	Inner Box Weight	4.4 lbs
Master Box Cube	1.0	Inner Box Cube	.4



## 28" 5-Pattern® Wand

- 28"-long with five spray patterns
- Easily switches from light mist to thorough soak with a simple turn of the dial
- Ideal for watering delicate hanging plants and watering/cleaning tasks in remote places

Swan Sku #	CSNTW2806	UPC	0-78627-03286-5
<b>Master Pack</b>	12	<b>Inner Pack</b>	6
Master Box Weight	22.3 lbs	Inner Box Weight	5.6 lbs
Master Box Cube	1.5	Inner Box Cube	.6





## 1/2" Female Coupling w/Clamp

- Female repair coupling for damaged 1/2" hoses
- Durable aircraft-grade-aluminum construction

Swan Sku #	CWE9542C12	UPC	0-78627-03410-4
<b>Master Pack</b>	24	<b>Inner Pack</b>	12
Master Box Weight	4.1 lbs	Inner Box Weight	1.0 lbs
Master Box Cube	.1	Inner Box Cube	.1



## 5/8" Female Coupling w/Clamp

- Female repair coupling for damaged 5/8" hoses
- Durable aircraft-grade-aluminum construction

Swan Sku #	CWE2762C12	UPC	0-78627-03411-1
<b>Master Pack</b>	24	<b>Inner Pack</b>	12
Master Box Weight	4.2 lbs	Inner Box Weight	1.0 lbs
Master Box Cube	.1	Inner Box Cube	.1



## 3/4" Female Coupling w/Clamp

- Female repair coupling for damaged 3/4" hoses
- Durable aircraft-grade-aluminum construction

Swan Sku #	CWE2932C12	UPC	0-78627-03413-5
<b>Master Pack</b>	24	<b>Inner Pack</b>	12
Master Box Weight	4.6 lbs	Inner Box Weight	1.0 lbs
Master Box Cube	.1	Inner Box Cube	.1



## 5/8" - 3/4" Hose Mender

- Plastic coupling to repair garden hose when it develops a small fracture or has been cut by a lawn mower
- Fast and easy repair processse ends.
- Made of durable plastic
- Simple 3-piece design
- Compatible with most 5/8", 3/4" hoses
- Reusable

Swan Sku #	CSNHM583412	UPC	0-78627-03414-2
<b>Master Pack</b>	24	<b>Inner Pack</b>	12
Master Box Weight	5 lbs	Inner Box Weight	1.0 lbs
Master Box Cube	.1	Inner Box Cube	.1



## 1/2" Male Coupling w/Clamp

- Male repair coupling for damaged 1/2" hoses
- Durable aircraft-grade-aluminum construction

Swan Sku #	CWE9541C12	UPC	0-78627-03317-6
<b>Master Pack</b>	24	<b>Inner Pack</b>	12
Master Box Weight	4.3 lbs	Inner Box Weight	1.0 lbs
Master Box Cube	.1	Inner Box Cube	.1



## 5/8" Male Coupling w/Clamp

- Male repair coupling for damaged 5/8" hoses
- Durable aircraft-grade-aluminum construction

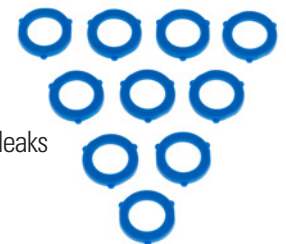
Swan Sku #	CWE2761C12	UPC	0-78627-03318-3
<b>Master Pack</b>	24	<b>Inner Pack</b>	12
Master Box Weight	4.4 lbs	Inner Box Weight	1.1 lbs
Master Box Cube	.1	Inner Box Cube	.1



## 3/4" Male Coupling w/Clamp

- Male repair coupling for damaged 3/4" hoses
- Durable aircraft-grade-aluminum construction

Swan Sku #	CWE2931C12	UPC	0-78627-03319-0
<b>Master Pack</b>	24	<b>Inner Pack</b>	12
Master Box Weight	4.6 lbs	Inner Box Weight	1.0 lbs
Master Box Cube	.1	Inner Box Cube	.1



## 10 Pack Blue Washers

- TPR garden-hose washers to prevent leaks and water waste
- Provides a secure seal between hose and water source or accessories
- Quick and easy installation
- Blue color makes them easy to find
- 10 washers per pack

Swan Sku #	WE900510	UPC	0-78627-03415-9
<b>Master Pack</b>	24	<b>Inner Pack</b>	12
Master Box Weight	2.1 lbs	Inner Box Weight	1.0 lbs
Master Box Cube	.1	Inner Box Cube	.1



## On/Off

- Shut-off valve at your fingertips allows you to turn off water without retreating to water source
- Ideal for shutting off sprinkler when you move from one area of the yard to another
- Easy to install
- Durable metal construction
- Notched plastic rim on female end easily and tightly connects to water source without any tools

Swan Sku #	CSNMOF1006	UPC	0-78627-03314-5
<b>Master Pack</b>	24	<b>Inner Pack</b>	12
Master Box Weight	6.9 lbs	Inner Box Weight	1.7 lbs
Master Box Cube	.2	Inner Box Cube	.1



## 4-Port On-Off

- Turns a single outdoor faucet into a unit that supports four hoses simultaneously
- Each of the four ports has its own shut-off valve to individually control water pressure/flow
- Lets you set a soaker hose for the garden, a sprinkler for the lawn and two hoses for other tasks all at the same time
- Durable metal construction

Swan Sku #	CSN4POF1004	UPC	0-78627-03316-9
<b>Master Pack</b>	8	<b>Inner Pack</b>	4
Master Box Weight	11.4 lbs	Inner Box Weight	2.8 lbs
Master Box Cube	.4	Inner Box Cube	.2

## Y On-Off



- Turns a single outdoor faucet into a unit that supports two hoses simultaneously
- Each of the two ports has its own shut-off valve to individually control water pressure/flow
- Lets you set a sprinkler for the lawn and a hose for another task at the same time
- Durable metal construction
- Notched plastic rim on female end easily and tightly connects to water source without any tools

Swan Sku #	CSNYOF1006	UPC	0-78627-03315-2
<b>Master Pack</b>	24	<b>Inner Pack</b>	12
Master Box Weight	13.7 lbs	Inner Box Weight	3.4 lbs
Master Box Cube	.3	Inner Box Cube	.1

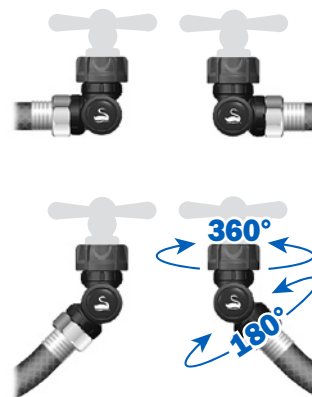
## Multipurpose Swivel

*The water accessory you never knew you needed!*

- Swivel attachment eliminates kinking at the water source or nozzle
- Ideal for home, boat and RV use
- Unique dual 180° and 360° rotation
- Heavy-duty ABS construction
- Extra-large female coupling easily attaches to water source
- Prevents kinking



Swan Sku #	CSNUSV100	UPC	0-78627-04104-1
<b>Master Pack</b>	24	<b>Inner Pack</b>	12
Master Box Weight	6.5 lbs	Inner Box Weight	2.74 lbs
Master Box Cube	.55	Inner Box Cube	.25



## EZ-Connect® - Common Features

- Customizes soaker hose system
- Easily replaces or adds parts, eliminating need to buy new soaker hose system
- **Fully compatible with Element® Soaker Systems®**
- Quick and easy installation: simply cut a hose and connect
- Exclusive Friction-Fit® male connectors stays securely fastened without twisting or clicking
- Patented blue water restrictor controls water flow and reduces water consumption
- Made of durable, high-impact plastic for years of reliability

## EZ-Connect® Feeder FE

- T-shaped female feeder connector for soaker hose system. Attaches to water source and branches water flow in two opposing directions



Swan Sku #	CELEZFE3801	UPC	0-78627-92383-5
<b>Master Pack</b>	40	<b>Inner Pack</b>	20
Master Box Weight	6.6 lbs	Inner Box Weight	1.1 lbs
Master Box Cube	.83	Inner Box Cube	.17

## EZ-Connect® T with Plugs T

- T-shaped soaker hose connector
- Customizes soaker hose system by adding bends and length



Swan Sku #	CELEZTB3801	UPC	0-78627-92384-2
<b>Master Pack</b>	40	<b>Inner Pack</b>	20
Master Box Weight	6.9 lbs	Inner Box Weight	1.1 lbs
Master Box Cube	.83	Inner Box Cube	.17

## EZ-Connect® Female, 2 Pack F

- Female connector for soaker hose system, attaches to water source



Swan Sku #	CELEZF3802	UPC	0-78627-92380-4
<b>Master Pack</b>	40	<b>Inner Pack</b>	20
Master Box Weight	5.5 lbs	Inner Box Weight	1.1 lbs
Master Box Cube	.83	Inner Box Cube	.17

## EZ-Connect® Male, 2 Pack M

- Male connector for soaker hose system

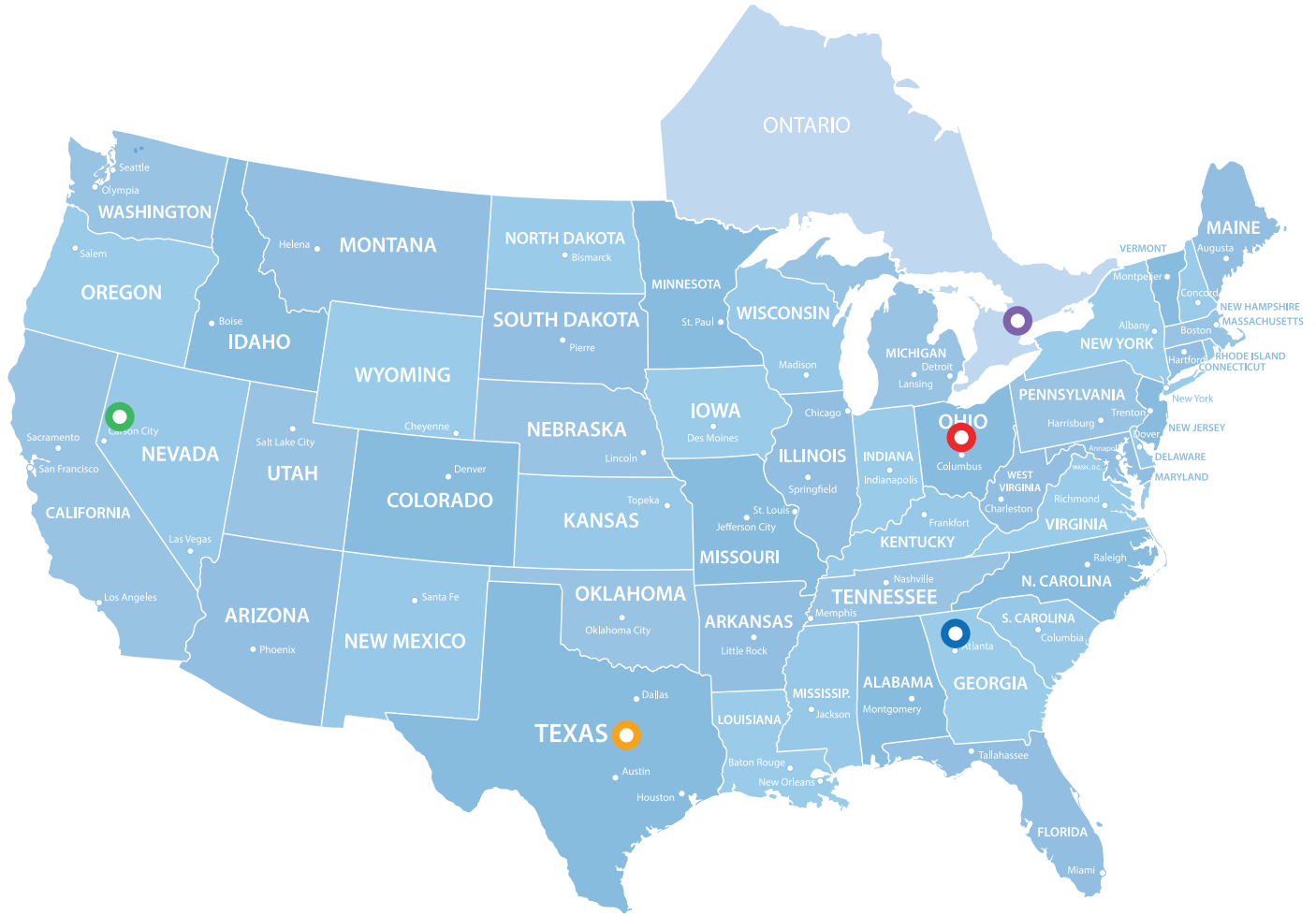


Swan Sku #	CELEZM3802	UPC	0-78627-92381-1
<b>Master Pack</b>	40	<b>Inner Pack</b>	20
Master Box Weight	5.5 lbs	Inner Box Weight	1.1 lbs
Master Box Cube	.67	Inner Box Cube	.17



## EZ-Connect®

pieces come merchandised, and are completely compatible with Element® soaker hoses and systems.



## CUSTOMER SUPPORT

1201 Delaware Avenue  
Marion, OH 43302  
1-800-848-8707  
[swan.cs@swanhose.com](mailto:swan.cs@swanhose.com)  
Monday thru Friday  
8 a.m. - 5 p.m. EST



## MANUFACTURING FACILITY

909 E. Glendale Avenue  
Sparks, NV 89431  
1-800-848-8707



## MANUFACTURING FACILITY

700 Jewel Drive  
Waco, TX 76712  
1-800-848-8707



## DISTRIBUTION FACILITY

77 Browns Line  
Toronto  
Ontario, Canada  
M8W 3S2  
1-800-848-8707



## CORPORATE OFFICES

7840 Roswell Road  
Building 100  
Suite 130  
Sandy Springs, GA 30350  
1-800-848-8707

[www.swanhose.com](http://www.swanhose.com)

