

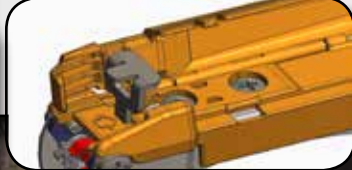
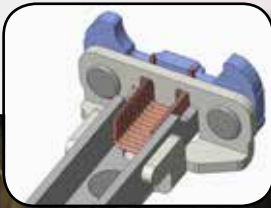
L.E. COOKE CO

2023 - Revised 8/1/23

DISTRIBUTOR'S CATALOG

HT-R45L Tapener®

New!
In Stock



HT-S45E "STRONG BIND"

Tapener®
for very strong ties



HT-RS Tapener®
(Small Head)



HT-S60E "Strong Bind"
Large Jaw Tapener®

New!
Arriving in 2024



Miracle Garden Tie



Published by:

L. E. Cooke Co.
26333 Road 140
Visalia, CA 93292
(559) 732-9146
Fax (559) 732-3702
supply@lecooke.com

WHAT IS MIRACLE GARDEN TIE?

This is the finest tying material on the market. It is available in .004, .006, .007, .008, .009, .012, and .020 mil. and comes in both 1/2" and 1" sizes. The 1/2" small rolls are custom slit for use in the HT-R and HT-RS Tapeners. The larger 1/2" rolls are for use in the HT-R45L and HT-R2. When proper strength tie is used, it will not girdle or cut a tree or vine. This material is versatile enough to be used in extremely cold regions, such as northern Canada, or to an extremely hot environment, such as the desert. It is strong, pliable, color fast, and does not need to be re-tied over and over. For staking, tying, training, or flagging, there is no finer product.

PROMOTIONAL FACTS

A universal demand for a tying medium that will NOT GIRDLE OR CUT trees or vines.

Packaged (individually in poly bags) and bulk are available.

Each package lists the footage and the mil. thickness, has UPC codes.

Each retail header card package is made for shelf or peg board display.

Miracle Garden Tie is 100% Made in the USA.



PERSONALIZED SERVICES

Large supplies of processed merchandise are normally kept on hand, and orders are usually assembled and shipped the day received. Our goal is to ship your order the same day if received before 1:00 pm PST.

We can ship directly to your customer from our warehouse, providing faster delivery time and eliminating the extra expense and handling time involved for your company.

We offer a complete repair service for current MAX Products models HT-R45L, HT-R, HT-R2, HT-RS, HT-S45E, HT-S60E including older models HT-B, HT-B2 and HR-F until parts run out. We also carry and ship MAX repair parts for your convenience.

We offer custom slitting of different sizes of tape that you may need for a specific purpose or project. We are happy to provide you with a quote.

ADVERTISING POLICIES: On occasion a few distributors have written requesting help in paying for the costs of printing their catalog. When this first came up some years ago, we discovered some inequities. First, the distributor who was small had a high expense in printing a limited amount of catalogs, so his request for financial aid was higher than the large distributor. This small distributor also ordered small quantities of Miracle Garden Tie per year, so the percentage of cost per sale was higher. Likewise, many of those selling large quantities of Miracle Garden Tie made no request for help in financing their catalog.

We felt the financial help should be available to all and equal to the amount of Miracle Garden Tie ordered.

We decided to increase the margin between the distributor cost and his suggested sales price (End User/ Grower Price list) to help cover advertising and sales promotions. We increased the discount from 25% to 33-1/3%, plus quantity discounts. The question now is, what has been sacrificed to give such a discount?

PRICE POLICY

This list cancels all previous quotations.

PRICES: All prices are based on shipment to one destination at one time. All products may be combined to secure the best possible price and volume discount (except Tapener® Repair Parts are not discounted). A \$30.00 fee for **preparation of export documents** will be charged when applicable.

QUANTITIES PRICE BREAKS: The price tables show prices for less than case quantities and prices for quantities in cases. Minimum quantities are listed with the price tables. In addition there are total dollar volume discounts.

DOLLAR VOLUME DISCOUNT: In addition to case price breaks, the total order volume earns additional discounts that apply to the total order (except no discounts are applied to Repair parts, freight and other labor services).



Total Order Value	Discount Applied
\$9,000 +	12%
\$5,000 - \$8,999	8%
\$1,800 - \$4,999	5%
\$900 - \$1,799	2%
\$0 - \$899	Net



SHIPPING: FOB, Visalia, California. Freight costs are included in the invoice charges unless you request "collect" shipments.

TERMS: All accounts are due by the 10th of the month following shipment to those with established credit. All sales after the 25th of the month are considered next month sales. All prices are FOB, Visalia, California.

METHOD OF PAYMENT: American Express, Visa and Master Card are accepted for your purchases.

FINANCE CHARGE: Liquidated damages by way of a finance charge of 2% per month (24% per annum) will be made on all overdue accounts.

COLLECTIONS: In an event the L.E. Cooke Co incurs any cost in collecting overdue accounts or retains an attorney to enforce any provisions of its invoices, or the terms or payments of checks or notes given in payment of any part of the invoices, the purchaser agrees to pay to L.E. Cooke Co all costs of collections including a reasonable attorney's fee, in any event not less than 40% of any monies due L.E. Cooke Co by purchaser or \$50.00 whichever sum is greater.

CLAIMS: All claims for errors, shortages, or damage must be made in writing within 10 days of delivery.

CONDITIONS: All orders are subject to supply of raw materials or imported components.

RETURNS: Any Returns must be approved in advance and a minimum 15% restocking charge may apply.

GUARANTEE: L. E. Cooke Co will exercise care to have merchandise true to name, that its liability in every instance whatsoever is limited to the purchase price. No liability is assumed by seller for delay or failure to deliver caused by wars, strikes, fire, floods, embargoes, or any other contingencies beyond seller's control.

MIRACLE GARDEN TIE PACKAGED FOR RETAIL DISPLAY



PROD. CODE	MIL	FEET	DESCRIPTION	ROLLS PER CARTON	ROLLS PER CASE	CARTON PRICE (Per Roll)	CASE PRICE (per Roll)
3300	.004	300'	1/2" All Purpose	12	144		
3302	.008	150'	1/2" Heavy Duty	12	144		
3304	.008	150'	1" Giant	6	72		

MINIMUM ORDER: 1 Case - but you can mix different Cartons in each case - 12 Cartons per case but will pay the Carton (not Case) price.

FREIGHT: F.O.B. Visalia, California (Collect)

Prices and volume discounts are based on shipments to one destination at one time.

Example: CASE Roll Costs When Volume Discounts Applied			
Total Order Value	Discount Applied	1/2" Rolls	1" Rolls
\$9,000 +	12%		
\$5,000 - \$8,999	8%		
\$1,800 - \$4,999	5%		
\$900 - \$1,799	2%		
\$0 - \$899	Net		

Note: Changes made in 2022

In 2021 we did a survey of distributors buying and selling the Packaged Miracle Garden Tie and confirmed what we suspected:

- 1) Very few retailers used the old display cartons.
- 2) For you to ship the old display cartons to your retail customers required re-boxing them - adding expense to you.

So we changed the packaging:

A) The display cartons have been replaced by a 200# test shippable carton - with its own barcode for your inventory tracking. Easier handling for you.

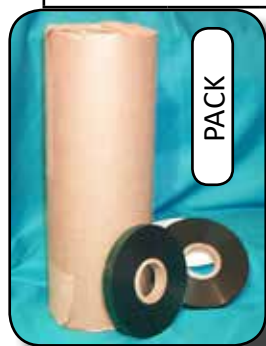
B) The product packaging is now using a header card punched for pegboard hanging stapled to a zip lock bag containing individual rolls of tape. Much more attractive than the old printed bags where the printing seemed to wear off in handling.



MARKETING HINT: Retailers are encouraged to carry all three packages of MIRACLE GARDEN TIE. Studies demonstrate a 20-25% increase in sales when consumers are given choices.

MIRACLE GARDEN TIE - BULK

PROD. CODE	MIL	FEET	DESCRIPTION	ROLLS PER PACK	ROLLS PER CASE	PACK PRICE (per Roll)	CASE PRICE (per Roll)
PLANT & TREE TIE, BUDDING, GRAFTING & AGRICULTURAL TIE - LARGE ROLLS							
3400	.004	300'	1/2" All Purpose (Green)	24	144		
3404	.004	300'	1/2" All Purpose (White)	24	144		
3405	.004	300'	1/2" All Purpose (Clear)	24	144		
3401	.006	200'	1/2" Economy (Green)	24	144		
3407	.006	200'	1/2" Economy (White)	24	144		
3408	.007	170'	1/2" Embossed (Green)	24	144		
3402	.008	150'	1/2" Heavy Duty (Green)	24	144		
3411	.008	150'	1/2" Embossed (Brown)	24	144		
3409	.009	140'	1/2" Embossed (White)	24	144		
3403	.012	100'	1/2" Extra Heavy (Green)	24	144		
3410	.020	60'	1/2" Colossal (Green)	24	144		
3423	.004	300'	1" All Purpose (White)	12	72		
3424	.004	300'	1" All Purpose (Clear)	12	72		
3420	.006	200'	1" Economy (Green)	12	72		
3427	.006	200'	1" Economy (White)	12	72		
3421	.008	150'	1" Giant (Green)	12	72		
3422	.012	100'	1" Super (Green)	12	72		
3425	.020	60'	1" Colossal (Green)	12	72		
			SMALL ROLLS	LEC (not MAX) small rolls may be used in the HT-R45L & HT-R2 but were created for the smaller handled HT-R and HT-RS			
3440	.004	120'	1/2" All Purpose (Green)	24	288		
3441	.006	80'	1/2" Economy (Green)	24	288		
3447	.006	80'	1/2" Economy (White)	24	288		
3448	.007	68'	1/2" Embossed (Green)	24	288		
3442	.008	60'	1/2" Heavy Duty (Green)	24	288		
3449	.009	56'	1/2" Taffeta (White)	24	288		
3451	.008	60'	1/2" Embossed (Brown)	24	288		
All 1/2" may be used in the HT-R45L and HT-R2 Max Tapers [®] including up to 12 and 20 mil.							



Example: CASE Roll Costs When Volume Discounts Applied				
Total Order Value	Discount Applied	1/2" Rolls	1" Rolls	1/2" Small Rolls
\$9,000 +	12%			
\$5,000 - \$8,999	8%			
\$1,800 - \$4,999	5%			
\$900 - \$1,799	2%			
\$0 - \$899	Net			



MINIMUM ORDER: 1 Case - but you can mix different Packs in each case - 6 Packs per case but will pay the Pack (not Case) price.

Prices and volume discounts are based on shipments to one destination at one time.

FREIGHT: F.O.B. Visalia, California (Collect)



MIRACLE FLAGGING TAPE

PROD. CODE	MIL	FEET	DESCRIPTION	ROLLS PER CARTON	ROLLS PER CASE	PACK PRICE (per Roll)	CASE PRICE (per Roll)
			LARGE ROLLS	1/2" large rolls are often used in the HT-R45L & HT-R2 for tagging and color coding products in the field			
3600	.004	300'	1/2" White	24	144		
3601	.004	300'	1/2" Pink - Glo	24	144		
3602	.004	300'	1/2" Blue	24	144		
3603	.004	300'	1/2" Yellow	24	144		
3604	.004	300'	1/2" Red	24	144		
3605	.004	300'	1/2" Orange - Glo	24	144		
3606	.004	300'	1/2" Lime Green - Glo	24	144		
3608	.004	300'	1/2" Mixed **	24	144		
3620	.004	300'	1" White	12	72		
3621	.004	300'	1" Pink - Glo	12	72		
3622	.004	300'	1" Blue	12	72		
3623	.004	300'	1" Yellow	12	72		
3624	.004	300'	1" Red	12	72		
3625	.004	300'	1" Orange - Glo	12	72		
3626	.004	300'	1" Lime Green - Glo	12	72		
3628	.004	300'	1" Mixed**	12	72		
			SMALL ROLLS	LEC (not MAX) small rolls may be used in the HT-R45L & HT-R2 but were created for the smaller handled HT-R and HT-RS			
3640	.004	130'	1/2" White (Small Roll)	24	288		
3641	.004	130'	1/2" Pink - Glo (Small Roll)	24	288		
3642	.004	130'	1/2" Blue (Small Roll)	24	288		
3643	.004	130'	1/2" Yellow (Small Roll)	24	288		
3644	.004	130'	1/2" Red (Small Roll)	24	288		
3645	.004	130'	1/2" Orange- Glo (Small Roll)	24	288		
3646	.004	130'	1/2" Lime Green (Small Roll)	24	288		

Example: CASE Roll Costs When Volume Discounts Applied				
Total Order Value	Discount Applied	1/2" Rolls	1" Rolls	1/2" Small Rolls
\$9,000 +	12%			
\$5,000 - \$8,999	8%			
\$1,800 - \$4,999	5%			
\$900 - \$1,799	2%			
\$0 - \$899	Net			

** Mixed are 10% more
MINIMUM ORDER: 1 Case - but you can mix different Packs in each case - 6 Packs per case but will pay the Pack (not Case) price.

FREIGHT: F.O.B. Visalia, California (Collect)

Prices and volume discounts are based on shipments to one destination at one time.



Suggested Uses for Flagging Tape		
Surveying	Size Grading	Variety I.D.
Quality Control	Shipping I.D.	Receiving I.D.
Harvesting	Sorting	Decorations
Assembling	Processing	Retail Prices
Inventory Control		Mark Sold Lots



CHIP BUDDING TAPE

OLD ITEM #	NEW PROD. CODE	MIL	FEET	DESCRIPTION	ROLLS PER PACK	ROLLS PER CASE	PACK PRICE (per Roll)	CASE PRICE (per Roll)
3406	4106	.002	800'	1/2" Chip Bud Tape (Clear)	24	144		
3415	4115	.002	800'	5/8" Chip Bud Tape (Clear)	19	114		
3426	4126	.002	800'	1" Chip Bud Tape (Clear)	12	72		

MINIMUM ORDER: 1 pack



There have been some product code changes since 2019 catalog. Yellow highlights those changes.



PARAFILM GRAFTING TAPE

ITEM #	MIL	FEET	DESCRIPTION	ROLLS PER CARTON	ROLLS PER CASE	CARTON PRICE (per Roll)	CASE PRICE (per Roll)
4200	.002	90'	1/2" Parafilm Tape (Clear)	12	144		
4220	.002	90'	1" Parafilm Tape (Clear)	6	72		

MINIMUM ORDER: 1 carton

Parafilm is an excellent replacement for grafting wax, paraffin, plastic bags, etc., as a method of retaining moisture around graft or bud unions. It can be used alone to hold the scion in place or it can be applied over the usual budding strip or grafting tape which hold the union secure. Parafilm normally breaks down over a period of several months. With faster growing species, it is usually necessary to cut or remove the film from the new graft. Most new buds push through the layers of Parafilm.

Remember:
Total order volume discounts up to 12% apply to ALL the products on this page.



FREIGHT: F.O.B. Visalia, California (Collect)

BIRD CONTROL TAPE

OLD ITEM #	NEW PROD. CODE	MIL	FEET	DESCRIPTION	ROLLS PER PACK	ROLLS PER CASE	PACK PRICE (per Roll)	CASE PRICE (per Roll)
COMMERCIAL ORCHARD BULK PACK								
3550	3850	1"	500'	Silver / Silver	12	144		
3552	3852	1"	500"	Red / Silver	12	144		
RETAIL PACKAGED FOR HOMEOWNER USE					ROLLS PER CARTON	ROLLS PER CASE	CARTON PRICE (Per Roll)	CASE PRICE (per Roll)
3555	3855	1"	200'	Silver / Silver	6	72		
3557	3857	1"	200'	Red / Silver	6	72		

WARNING: This tape conducts electricity. Please advise your customers not to place near or around electrical wiring or utility lines.

There have been some product code changes since 2019 catalog. Yellow highlights those changes.



Red/Silver Bird Control Tape over vineyard



Remember:
Total order volume discounts up to 12% apply to ALL the products on this page.

RING KNIVES

OLD ITEM #	NEW PROD. CODE	DESCRIPTION	RINGS PER BOX	EACH PRICE (1-11 BOXES)	EACH PRICE (12 BOXES +)
3908	9008	Ring Knife Size # 8	12		
3909	9009	Ring Knife Size # 9	12		
3910	9010	Ring Knife Size # 10	12		
3911	9011	Ring Knife Size # 11	12		
3912	9012	Ring Knife Size # 12	12		
3913	9013	Ring Knife Size # 13	12		
3914	9014	Ring Knife Size # 14	12		
3915	9015	Ring Knife Size # 15	12		
3916	9016	Adjustable Size Small (Plastic)	12		
3917	9017	Adjustable Size Medium (Plastic)	12		
3918	9018	Adjustable Size Large (Plastic)	12		

Remember:
Total order volume discounts up to 12% apply to Ring Knives too.

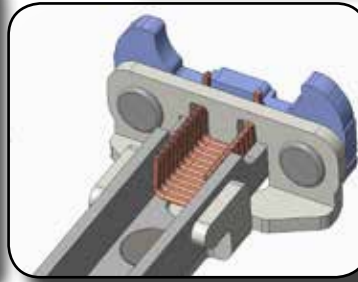
Sizes may be combined to receive the best possible price.
Minimum order 1 box. 12 ring knives per box.

MAX TAPENER® OVERVIEW

The productivity tools the professionals use for quality and durability

Always Innovating and Improving

HT-R Series



Minor, but significant, improvement to crimping mechanism to reduce jamming and user damage. Includes jam clearing tool and padded handle. Same staples and blades

HT-S Series (Strong Bind)


There are jobs that just need a stronger tie such as larger caliper trees tied to stakes, grape loads tied to trellis wires, staked trees in windy areas or trellising apple and pear trees to name a few.



Supplies used with MAX Tapeners	HT-R45L	HT-R2	HT-R1	HT-RS	HT-S45E	HT-S60E
5100 604E-L Staples (4800 per box) (MS93305)	Yes	Yes	Yes	Yes	No	No
5120 404F-L Staples (3000 per box) (MS93303)	No	No	No	No	Yes	Yes
5210 HT-R & HT-S Tapener Blades (2 / packet) (TC90045)	Yes	Yes	Yes	Yes	Yes	Yes
Tapes used with MAX Tapeners	HT-R45L	HT-R2	HT-R1	Ht-RS	HT-S45E	HT-S60E
Large Rolls 1/2" LEC Tape (ranges 4-20 mil avail.)	Yes	Yes	No	No	No	No
Small Rolls 1/2" LEC Tape (ranges 4-9 mil avail.)	Yes	Yes	Yes	Yes	No	No
Large Rolls 1/2" LEC Flagging Tape	Yes	Yes	No	No	No	No
Small Rolls 1/2" LEC Flagging Tape	Yes	Yes	Yes	Yes	No	No
Small Rolls MAX Tape	No	No	Yes	Yes	No	No
Large Rolls MAX Tape	Yes	Yes	No	No	No	No
TAPE-T32B "Strong Bind" Tarpaulin Tape (TP91510)	No	No	No	No	Yes	Yes

MAX TAPENER® & TIER PRODUCTS



OLD ITEM #	NEW PROD. CODE	DESCRIPTION	EACH PRICE	CASE PRICE (Each price)
MAX TAPENERS® & PLIER STAPLERS				CASE OF 20
3703	5001	HT-R1 MAX Tapener® (HT90067) (uses small rolls) <i>while supplies last</i>		
3705	5002	HT-R2 MAX Tapener® (HT90068) (uses large rolls) <i>while supplies last</i>		
New	5009	HT-R45L(OR) Tapener® (HT90127) (uses large rolls) (improved HT-R2)		
3707	5007	HT-RS MAX Tapener® (HT90066) (uses small rolls) - Smaller head		
	5020	HT-S45E MAX "Strong Bind" Tapener® (HT90111) (uses black tarp. tape)		
New	5025	HT-S60E MAX "Strong Bind Large Jaw" Tapener® (HT90165) <i>Available Feb. 2024</i>		
3730	5030	HR-F Twine Tier		
3727	5090	HP-88 Plier Stapler - Metallic Gray 	EACH PRICE	EACH PRICE CASE OF 40
MAX STAPLES			EACH BOX	EACH PRICE CARTON OF 10 EACH PRICE CASE OF 100
3708	5100	604E-L Staples (4800 / box) For HT-B, HT-R tools (MS93305)		
	5120	404F-L Staples (3000 / box) for HT-S45E and HT-S60E Strong Bind Tapeners® (MS93303)		
3732	5130	HR-F Staples MAX (G1305M) (1000 per box)		
3728	5190	Staples 2115 1/4L 1/4" for HP-88 Plier Staplers		
3729	5192	Staples 2115 3/8L 3/8" for HP-88 Plier Staplers		
MAX TAPENER BLADES			EACH PACKET	EACH PRICE CARTON OF 30 EACH PRICE CASE OF 540
3709	5202	HT-R Tapener® Blades (2 per packet) (TC90015) Discontinued	NOTE: Now the 5210 (TC90045) fits all HT-R and HT-S Tapeners.	
	5210	Tapener® Blades for HT-R and HT-S (2 per packet) (TC90045)		
			EACH PACKET	EACH PRICE SHEET OF 30 EACH PRICE CASE OF 150
3711	5200	HT-B (Old) Tapener® Blades (3 per packet) (TC90017)		
			EACH BOX	EACH PRICE CARTON OF 10 EACH PRICE CASE OF 100
3734	5220	HR-F Blades MAX (HR10145) (10 blades per box)		

Road Map of HT-R Changes

2023 HT-R2 to HT-R45L(OR) available now or when stock out of HT-R2 early 2023

2023 HT-R1 to HT-RS when HT-R1 depleted mid to late 2023 2024-5 HT-RS to HT-R24C when HT-RS stock out

Remember: Total order volume discounts up to 12% apply to ALL the products on this page.

There have been some product code changes since 2019 catalog. Yellow highlights those changes.

MAX TAPE PRODUCTS

OLD ITEM #	NEW PROD. CODE	DESCRIPTION	EACH PRICE	EACH PRICE CASE (20) QUANTITY
<i>MAX Small Rolls will fit HT-R1 and HT-RS (core will not fit HT-R45L or HT-R2) MAX Large Rolls will fit HT-R45L & HT-R2 (will not fit HT-R1 or HT-RS)</i>				
MAX TAPE (SMALL ROLLS)			EACH PRICE BOX OF 10	EACH PRICE CASE OF 300
3712	6012	TAPE-10 White .10 mm /.004 (131')		
3714	6014	TAPE-15 Blue .15 mm /.006 (85')		
3716	6016	TAPE-25 Red .25 mm /.010 (52')		
MAX TAPE (LARGE ROLLS)			EACH PRICE BAG OF 10	EACH PRICE CASE OF 150
3718	6018	TAPE-215 Green .15 mm /.006 (170')		
3720	6020	TAPE-225 Green .25 mm /.010 (100')		
MAX SUNSHINE DISSOLVING (PHOTOLYSIS) TAPE 11 mm or .433" wide (for your 1/2" applications)				
3722	6050	TAPE-100R (Small Rolls) .10 mm /.004" (38 m/124') Ivory color. Dissolves in about 5-8 Months	EACH PRICE BOX OF 10	EACH PRICE CASE OF 300
3723	6052	TAPE-100R2 (Large Rolls) .10 mm /.004" (74 m/242') Ivory color. Dissolves in about 5-8 Months	EACH PRICE BAG OF 10	EACH PRICE CASE OF 150
3725	6054	TAPE-200R2 (Large Rolls) .20 mm /.008" (40 m/131') Light Green. Dissolves in about 3-5 Months		
"STRONG BIND" TARPAULIN TAPE			EACH PRICE BOX OF 5	EACH PRICE CASE OF 100
6100		TAPE-T32B Tarpaulin Tape (#TP91510) 9 mm / .354" wide for HT-S45E & HT-S60E "Strong Bind" Tools (32 m/104.9')		

Remember: Total order volume discounts up to 12% apply to ALL the products on this page.



MAX Tapener® "HT-S45E & HT-S60E Strong bind" with TAPE-T32B performs with a 4.6 times stronger pull apart binding force compared with performance of TAPE-15 thanks to the combination of dedicated tape and staples. This stronger pull apart force helps to keep larger plants tied to the stake or loaded grape vines tied to wire - efficiently replacing other ways such as hand tying. Belt Hook included. Note: this tape does not stretch like Miracle Garden Tie.

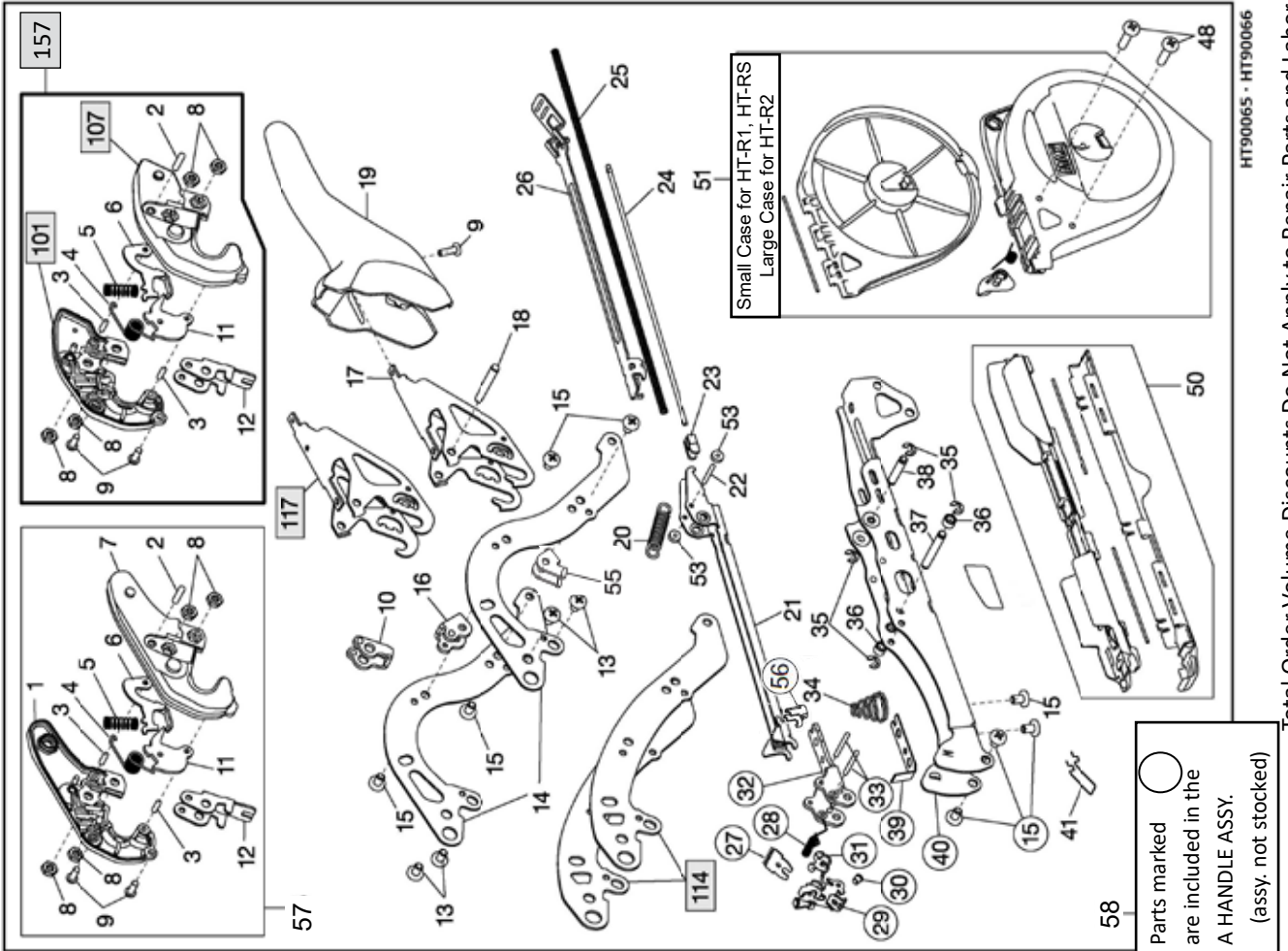


<p>TAPE100-R 1 box (pack of 10)</p> <p>Thickness: 0.1mm Width: 11mm, Length: 38m Tape color: cream Holding duration: from 5 to 10 months Main application: grapes (Delaware), cucumbers</p>	<p>TAPE200-R 1 box (pack of 10)</p> <p>Thickness: 0.2 mm; Width: 11 mm, Length: 19 m Tape color: pale green Holding duration: from 3 to 6 months Main application: tomatoes</p>	<p>TAPE200-L 1 box (pack of 10)</p> <p>Thickness: 0.2 mm, Width: 11 mm, Length: 19 m Tape color: pink Holding duration: from 6 to 10 months Main application: grapes (medium and large seed varieties), kiwifruit</p>
--	--	--

HT-R1, HT-R2 & HT-RS ILLUSTRATION AND PARTS LIST WITH PRICES

Numerical figures shown are index numbers referring to Parts List.

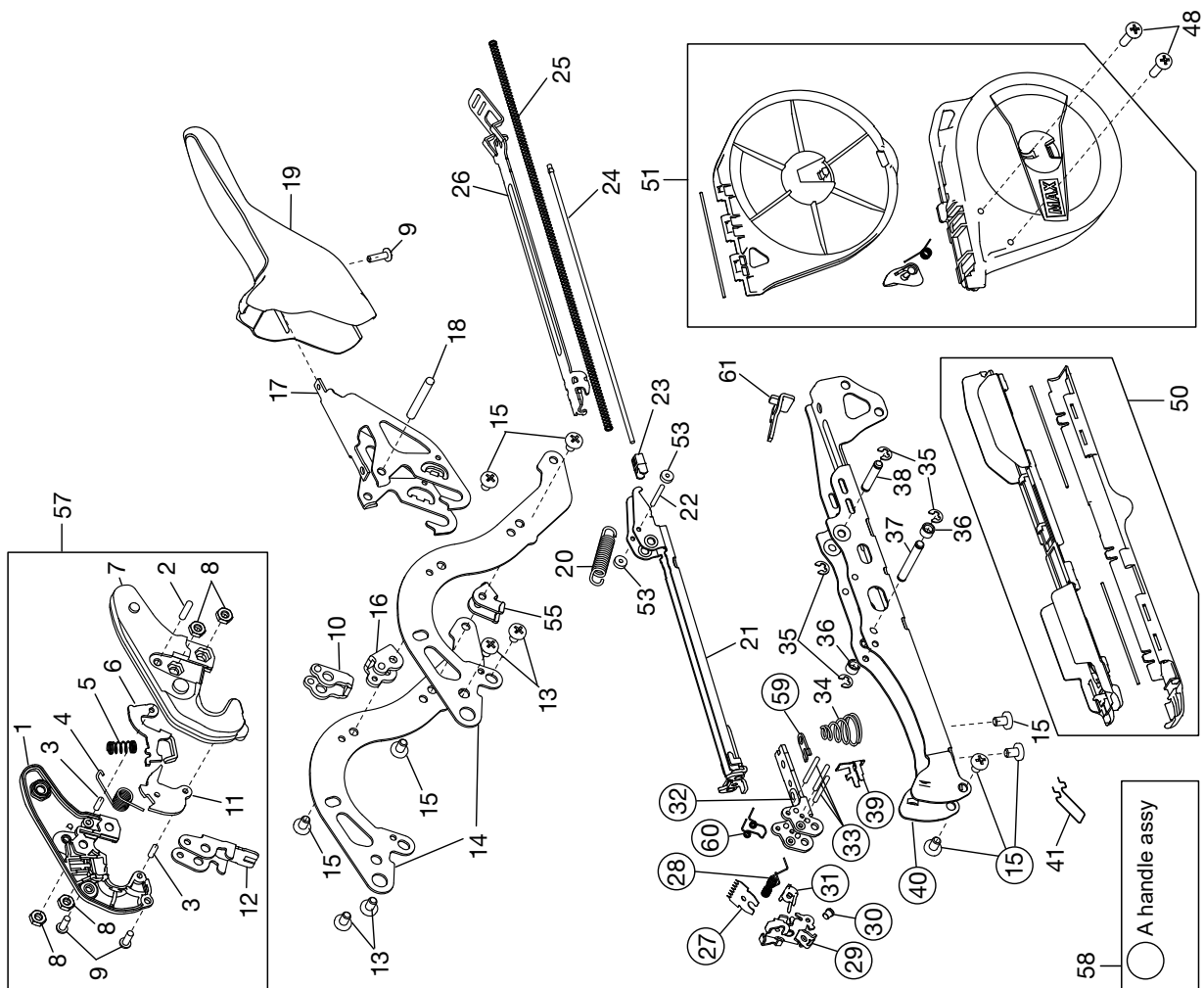
Shaded numbers are those unique to the HT-RS.



OLD PART #	NEW PROD CODE	DESCRIPTION - In order by INDEX-R##	PRICE EACH
3741	7001	INDEX-R1,S1 (HT11672) B Case (HT-R1, HT-R2)	
3742	7002	INDEX-R2,S2 (FF31714) Straight Pin 1714	
3743	7003	INDEX-R3,S3 (FF31712) Straight Pin 1712	
3744	7004	INDEX-R4,S4 (KK33402) Torsion Spring 3402	
3745	70051	INDEX-R5,S5 (KK29192) Compression Spring 9192	
3746	7006	INDEX-R6,S6 (HT11670) Lock Plate S	
3747	7007	INDEX-R7,S7 (HT11627) A Case (HT-R1,2,4,5,HT-S)	
3748	7008	INDEX-R8 (CC43107) Hex Nut 3-4	
3749	7009	INDEX-R9,S9 (AA05719) +PH Tap Screw 3X8 (P)	
3750	7010	INDEX-R10 (HT11632) Clincher	
3751	7011	INDEX-R11,S11 (HT11622) Tape Catch	
3786	7012	INDEX-R12,S12 (HT11671) Tape Plate HT-R, HT-S	
3753	7013	INDEX-R13,S13 (AA25537) Screw Bind M4X6	
3754	7014	INDEX-R14,S14 (HT11618) Clincher Arm (HT-R1,2,4,5, HT-S)	
3755	7015	INDEX-R15,S15 (AA05716) Screw Bind 4X6 (S-Tight)	
3756	7016	INDEX-R16,S16 (HT11619) Arm Support	
3757	7017	INDEX-R17,S18 (HT11637) B Handle (HT-R1,2, R45, S45)	
3758	7018	INDEX-R18,S19 (FF31713) Straight Pin 1713	
3759	7019	INDEX-R19 (HT11638) Grip (HT-R1,2,S)	
3760	7020	INDEX-R20 (KK13390) Extension Spring 3390	
3761	7021	INDEX-R21 (HT70061) Magazine Unit (HT-R1,2,S)	
3762	7022	INDEX-R22,S23 (FF31716) Straight Pin 1716	
3763	7023	INDEX-R23 (HT11611) Pusher (HT-R1,2,S)	
3764	7024	INDEX-R24,S25 (HT11610) Spring Guide Rod	
3765	7025	INDEX-R25,S26 (KK29131) Compression Spring 9131	
3766	7026	INDEX-R26 (HT11609) Staple Cover	
5202	5210	HT-R & HT-S Cutting Blade (TC90045)	Page 9
3767	7028	INDEX-R28,S29 (KK34099) Torsion Spring 4099	
3768	7029	INDEX-R29 (HT70070) Tape Guide S Unit	
3769	7030	INDEX-R30,S31 (FF41740) Step Pin 1740	
3770	7031	INDEX-R31 (HT11596) Tape Guide Support (HT-R1,2,S)(Red)	
3787	7032	INDEX-R32 (HT11673) Tape Guide Base S (HT-R1,2,S)	
3772	7033	INDEX-R33,S36 (FF31711) Straight Pin 1711	
3773	7034	INDEX-R34,S38 (KK83018) Conical Spring 3018	
3845	7035	INDEX-R35,B29,S40 (JJ10103/JJ10511) E-Ring 3.2	
3774	7036	INDEX-R36,S41 (HT11615) Roller	
3775	7037	INDEX-R37,S50 (FF31643) Straight Pin 1643	
3776	7038	INDEX-R38,S51 (FF31644) Straight Pin 1644	
3777	7039	INDEX-R39 (HT11592) Driver (HT-R1,2,S)	
3778	7040	INDEX-R40 (HT11591) A Handle (HT-R1,2,S)	
3779	7041	INDEX-R41,S57 (HT11603) Tape Spring	
3780	7048	INDEX-R48 (AA05715) Screw Bind 4X16 (P)	
3781	7050	INDEX-R50 (HT70064) Tape Holder Assembly (HT-R1,2,S)	
3782	7051	INDEX-R51 (HT70065) Small Bobbin Case Assy (HT-R1,S)	
3783	7052	INDEX-R51 (HT70067) Large Bobbin Case Assy (HT-R2)	
3784	7053	INDEX-R53,S39 (GN12070/HT11669) Rubber Washer 1.7X6X2	
New	7055	INDEX-R55,S17 (HT11697) Arm Support S	
New	7056	INDEX-R56 (HT11738) Clincher Stopper (HT-R1,2,S)	
3785	7057	INDEX-R57 (HT70068) Tape Catch Assy (HT-R1, HT-R2)	
3788	7101	INDEX-R101 (HT11682) B Case (HT-R5)	
3789	7107	INDEX-R107 (HT11681) A Case (HT-R5)	
3790	7114	INDEX-R114 (HT11683) Clincher Arm (HT-R5)	
3791	7117	INDEX-R117 (HT11695) B Handle (HT-R5)	
3792	7157	INDEX-R157 (HT70078) Tape Catch Assy (HT-R5)	

OLD PART #	NEW PROD CODE	DESCRIPTION - In order by INDEX-R#	PRICE EACH
New	70011	INDEX-R1,S1 (HT11778) B Case S2 (HT-R1,2,R45, S45)	
3742	7002	INDEX-R2,S2 (FF31714) Straight Pin 1714	
3743	7003	INDEX-R3,S3 (FF31712) Straight Pin 1712	
3744	7004	INDEX-R4,S4 (KK33402) Torsion Spring 3402	
New	70051	INDEX-R5,S5 (KK29192) Compression Spring 9192	
New	70061	INDEX-R6,S6 (HT11768) Lock Plate S2 (HT-R1,2,R45, S45,S60)	
3747	7007	INDEX-R7,S7 (HT11627) A Case (HT-R1,2,45,HT-S)	
3748	7008	INDEX-R8 (CC43107) Hex Nut 3-4	
3749	7009	INDEX-R9,S9 (AA05719) +PH Tap Screw 3X8 (P)	
3750	7010	INDEX-R10 (HT11632) Clincher	
3751	7011	INDEX-R11,S11 (HT11622) Tape Catch	
3786	7012	INDEX-R12,S12 (HT11671) Tape Plate HT-R, HT-S	
3753	7013	INDEX-R13,S13 (AA25537) Screw Bind M4X6	
3754	7014	INDEX-R14,S14 (HT11618) Clincher Arm (HT-R1,2,45,HT-S)	
3755	7015	INDEX-R15,S15 (AA05716) Screw Bind 4X6 (S-Tight)	
3756	7016	INDEX-R16,S16 (HT11619) Arm Support	
3757	7017	INDEX-R17,S18 (HT11637) B Handle (HT-R1,2, R45, S45)	
3758	7018	INDEX-R18,S19 (FF31713) Straight Pin 1713	
New	70192	INDEX-R19 (HT11769) Grip (R45L)	
3760	7020	INDEX-R20 (KK13390) Extension Spring 3390	
New	70211	INDEX-R21 (HT70106) Magazine Unit (R45C,L)	
3762	7022	INDEX-R22,S23 (FF31716) Straight Pin 1716	
New	70231	INDEX-R23 (HT11761) Pusher (HT-R1,2,45)	
3764	7024	INDEX-R24,S25 (HT11610) Spring Guide Rod	
3765	7025	INDEX-R25,S26 (KK29131) Compression Spring 9131	
3766	7026	INDEX-R26 (HT11609) Staple Cover	
5202	5210	INDEX-R27,S28 HT-R & HT-S Cutting Blade (TC90045)	Page 9
3767	7028	INDEX-R28,S29 (KK34099) Torsion Spring 4099	
3768	7029	INDEX-R29 (HT70070) Tape Guide S Unit	
3769	7030	INDEX-R30,S31 (FF41740) Step Pin 1740	
New	70311	INDEX-R31,S32 (HT11763) Tape Guide Support S (HT-R & HT-S)(Red)	
New	70321	INDEX-R32,S35 (HT11781) Tape Guide Base S2 (HT-R45,S45)	
3772	7033	INDEX-R33,S36 (FF31711) Straight Pin 1711	
3773	7034	INDEX-R34,S38 (KK83018) Conical Spring 3018	
3845	7035	INDEX-R35,B29,S40 (JJ10103/JJ10511) E-Ring 3.2	
3774	7036	INDEX-R36,S41 (HT11615) Roller	
3775	7037	INDEX-R37,S50 (FF31643) Straight Pin 1643	
3776	7038	INDEX-R38,S51 (FF31644) Straight Pin 1644	
New	70391	INDEX-R39 (HT11754) Driver (HT-R45)	
New	70401	INDEX-R40 (HT11788) A Handle S (HT-R1,2,S,45)	
3779	7041	INDEX-R41,S57 (HT11603) Tape Spring	
3780	7048	INDEX-R48 (AA05715) Screw Bind 4X16 (P)	
New	7358	INDEX-R50,S58 (HT70097) Tape Holder Assy (HT-R45, HT-S)	
New	70511	INDEX-R51 (HT70107) Small Bobbin Case Assy (HT-R45C)	
New	70521	INDEX-R51 (HT70109) Large Bobbin Case Assy (HT-R45L)	
3784	7053	INDEX-R53,S39 (GN12070/HT11669) Rubber Washer 1.7X6X2	
New	7055	INDEX-R55,S17 (HT11697) Arm Support S	
New	70571	INDEX-R57, S60 (HT70111) Tape Catch S2 Assy(HT-R1,2,S,R45,S45)	
Assy. not stocked		INDEX-R58 (HT81017) A Handle Assembly (HT-R45C,L)	
New	7059	INDEX-R59, S37 (HT11762) Back Up Washer (HT-R45, HT-S)	
New	7060	INDEX-R60, S33 (KK34101) Torsion Spring 4101	
New	7061	INDEX-R61, S54 (HT11766) Jam Clearing Stick (HT-R45, HT-S)	

HT-R45L, HT-R45C ASSEMBLY CHART & PARTS LIST

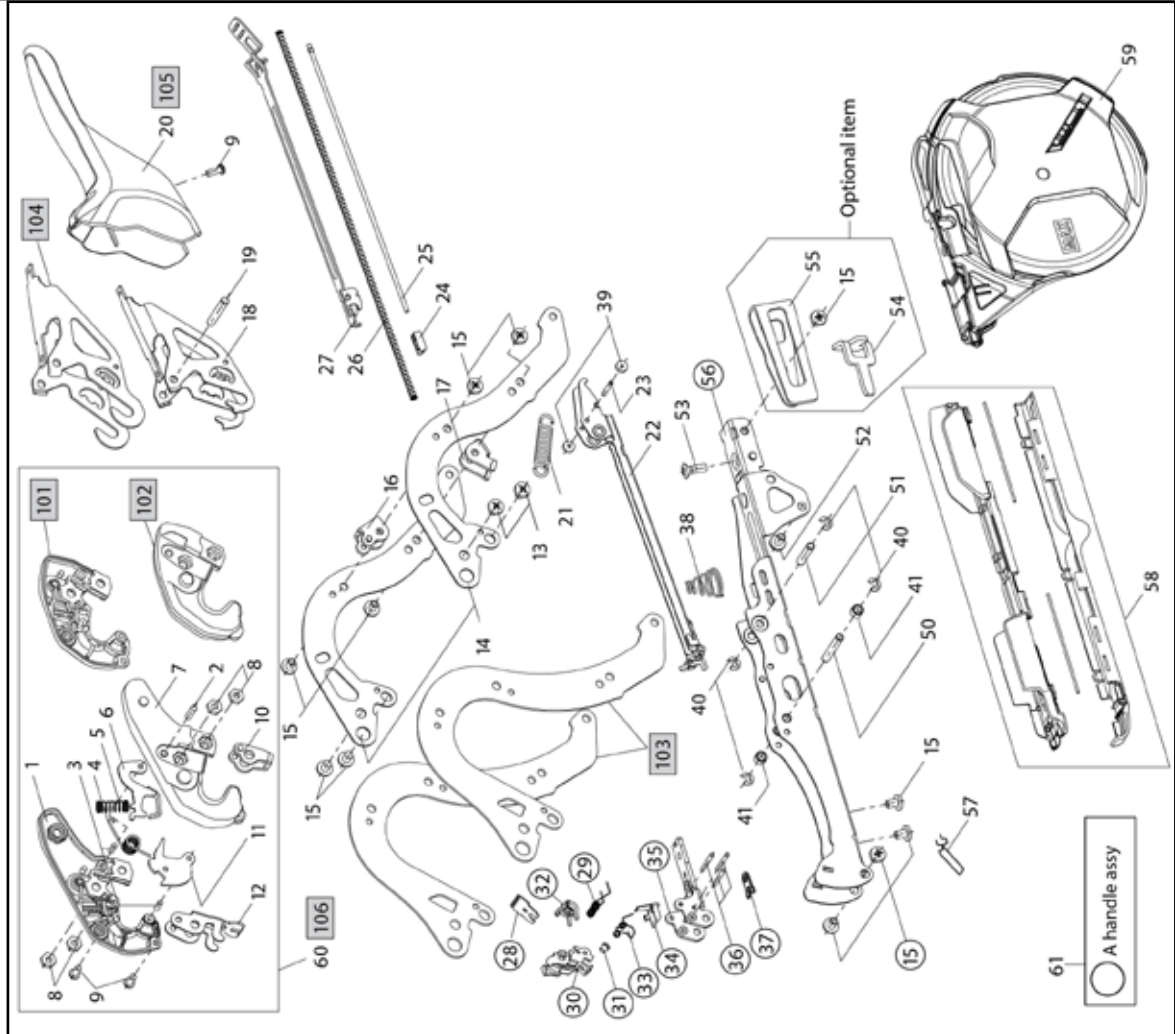


Total Order Volume Discounts Do Not Apply to Repair Parts and Labor

HT-S45E, HT-S60E ASSEMBLY CHART & PARTS LIST

Numerical figures shown are index numbers referring to Parts List.

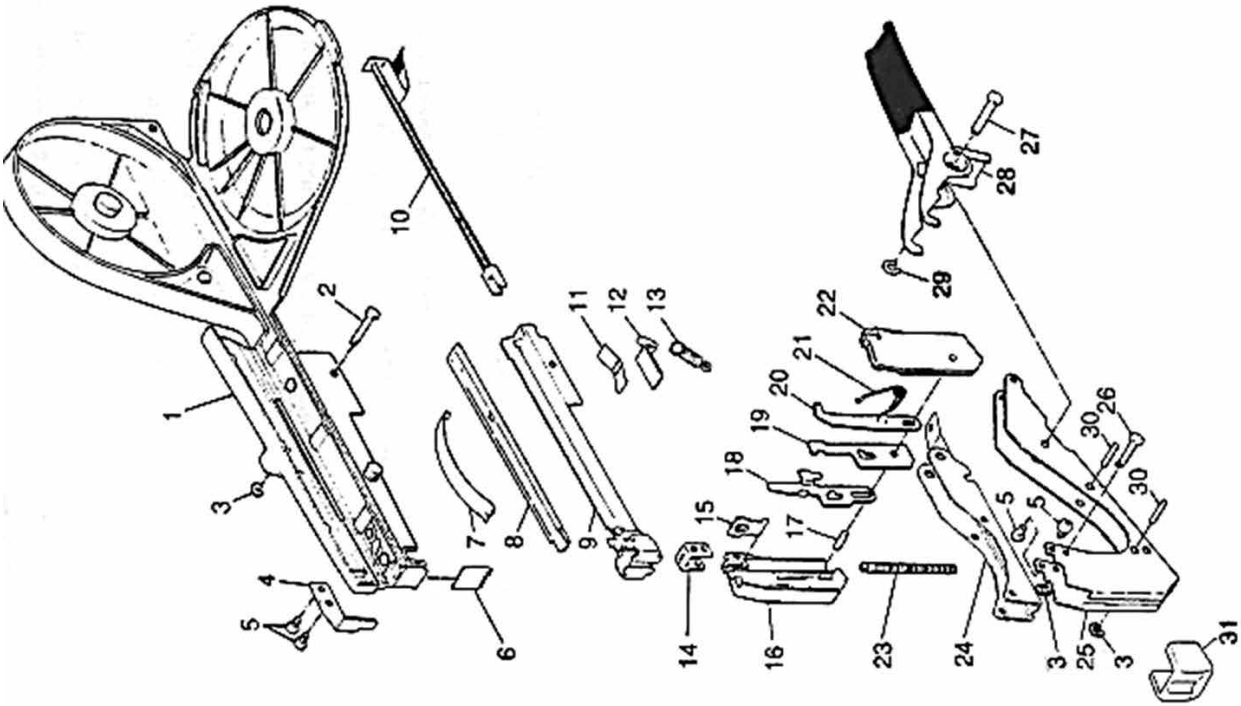
Shaded numbers are those unique to the HT-S60E



MAX TAPENER® HT-B & HT-B2 ASSEMBLY CHART AND PARTS LIST

(Most parts for these discontinued products are still available but when stock out will not be reordered)

OLD PART #	NEW PROD CODE	DESCRIPTION	PRICE EACH
3818	7200	INDEX-B1 (HT70005) A Type Handle Unit (HT-B) (Green)	
3846	7201	INDEX-B1 (HT70008) A Type Handle Unit (HT-B2) (Orange)	
3819	7202	INDEX-B2 (FF41229) Straight Pin #1229	
3820	7203	INDEX-B3 (JJ10104) E Type Retaining Ring 2.3	
3821	7204	INDEX-B4 (HT10066) Rod Holder	
3822	7205	INDEX-B5 (AA21102) Pan Head Machine Screw 3X4	
3711	5200	HT-B Tapener Blades (3 per packet) MAX #TC90017	See Page 9
3823	7207	INDEX-B7 (KK51011) Leaf Spring #1011	
3824	7208	INDEX-B8 (HT10025) Staple Cover	
3825	7209	INDEX-B9 (HT70020) Magazine Unit	
3826	7210	INDEX-B10 (HT10028/HT10027) Pusher Unit	
3827	7211	INDEX-B11 (KK51012) Leaf Spring #1012	
3828	7212	INDEX-B12 (HT10026) Hook	
3829	7213	INDEX-B13 (KK13001) Tension Spring	
3830	7214	INDEX-B14 (HT10013) Clincher	
3831	7215	INDEX-B15 (HT11202) Support Plate	
3832	7216	INDEX-B16 (HT10052) A Type Case	
3833	7217	INDEX-B17 (FF30103) Straight Pin #103	
3834	7218	INDEX-B18 (HT11205) Push Rod	
3835	7219	INDEX-B19 (HT11206) Clutch Plate	
3836	7220	INDEX-B20 (HT70004) Tape Catch Unit	
3837	7221	INDEX-B21 (KK33003) Torsion Coil Spring #3003	
3838	7222	INDEX-B22 (HT10053) B Type Case	
3839	7223	INDEX-B23 (KK23006) Compression Spring #3006	
3840	7224	INDEX-B24 (HT11247) Cover	
3841	7225	INDEX-B25 (HT10051) Clincher Arm	
3842	7226	INDEX-B26 (FF41221) Step Pin #1221	
3843	7227	INDEX-B27 (FF41228) Straight Pin #1228	
3844	7228	INDEX-B28 (HT10060) B Type Handle Unit	
3845	7035	INDEX-R-35,S40,B29 (JJ10103) E Type Retaining Ring 3.2	
3871	7230	INDEX-B30 (FF21220) Spring Pin 3X16	
3872	7231	INDEX-B31 (HT70021) Protector Unit	
3870	7270	Complete Head Assembly	



Total Order Volume Discounts Do Not Apply to Repair Parts and Labor