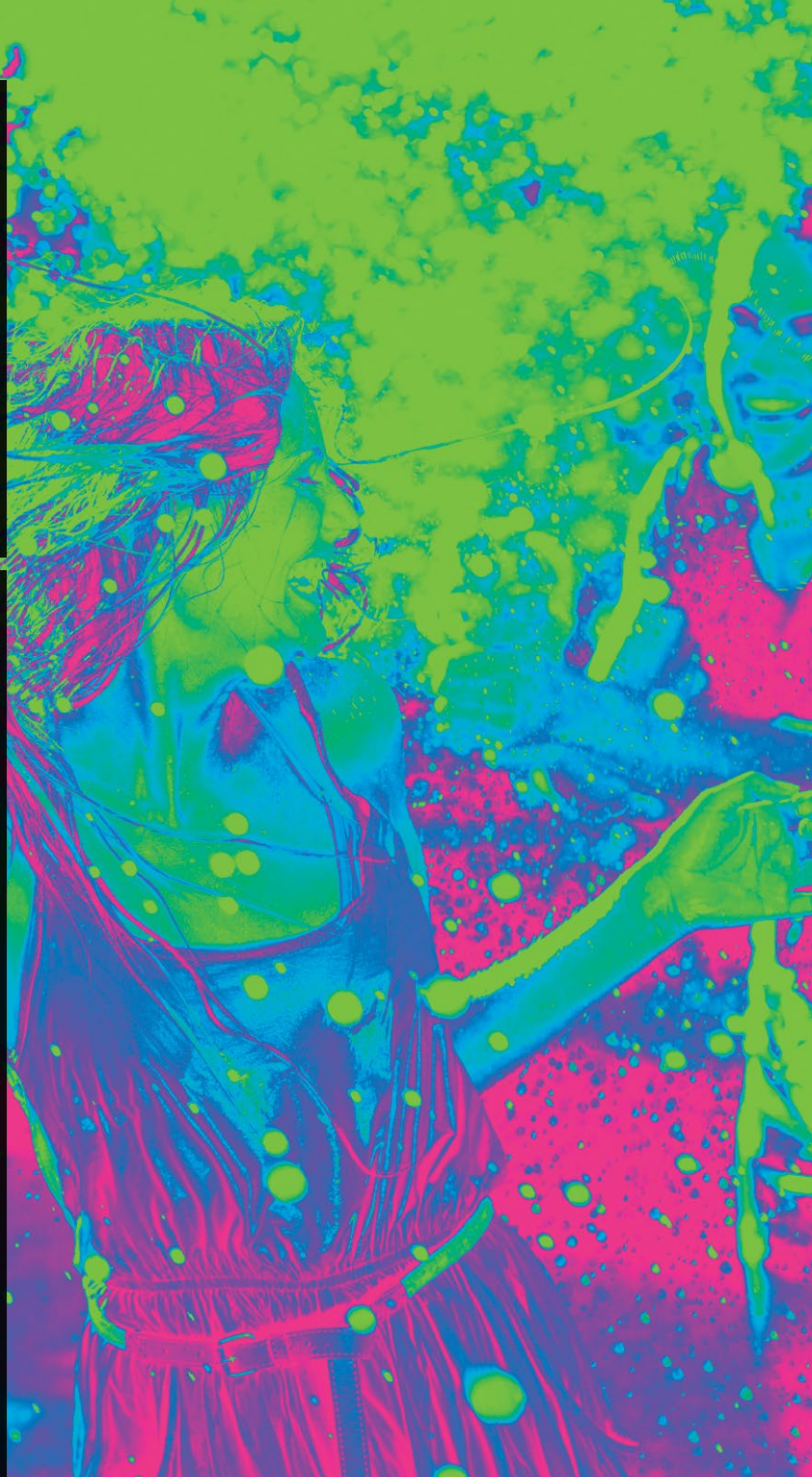




The commercial side of the FITT group that develops products and solutions for gardening, irrigation, cleaning and outdoor life applications.

fitt hiflo™  
fitt force® pro  
fitt marine/rv hose set



FITT group is a global leader in engineering and production of thermoplastic innovative solutions for fluid management.

the responsible flow:  
FITT's sustainability strategy to 2030.



**87**  
COUNTRIES



**17**  
FACILITIES



**980**  
MILLION FEET OF  
HOSE PER YEAR



**1200**  
EMPLOYEES

«the task that we are called to fulfill must contribute to making this world a better place, for us and for future generations»

**Alessandro Mezzalana**  
CEO

#### **FITT Commitment**

FITT's ultimate goal is doing business that generates shared economic, environmental and social value.

#### **ESG Objectives**

In line with the responsible business path being followed by the organization, in 2021 FITT became a Benefit Company. The mission of the company now includes a commitment to a positive impact on the community and the biosphere.

#### **E (Environmental)**

FITT is actively engaged in decarbonization efforts through the development of low-impact products that will produce -10% CO2e compared to their traditional products. FITT's focus is on two parallel fronts:

- Decarbonization – by 2025 mapping scope 1-2-3 of FITT Group and setting Co2e reduction targets
- Innovative products – lower environmental impact and account for an 8% increase in sales by 2025

#### **S (Social)**

FITT is engaged on two complementary fronts:

- Internal – fostering an environment of well-being, inclusion and security for all FITT employees
- External – creating partnerships with local and international stakeholders to promote the inclusion of underrepresented groups

#### **G (Governance)**

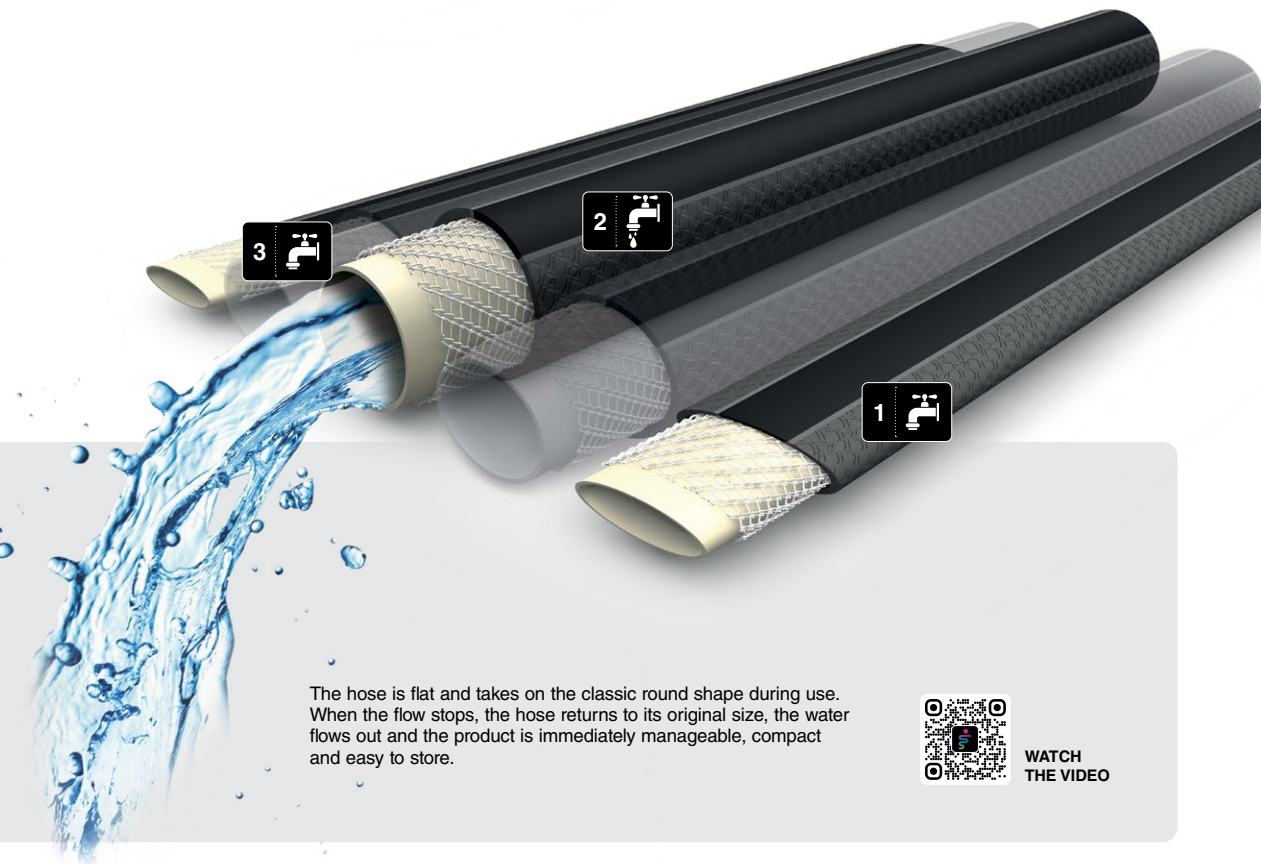
FITT is committed to transforming its business model to create social and environmental value.

  FITT is an Italy-based company with sales of more than \$300 million

## the materials

Safe for us and the environment – FITT HiFlo, FITT Force Pro and FITT Marine/RV are free of PVC, lead, phthalates and other harmful chemicals.

\*Santoprene® is a high-performance elastomer used in automotive and industrial applications combining the characteristics of vulcanized rubber (flexibility at low temperatures and high mechanical properties) with the workability and recycling properties of thermoplastic materials.

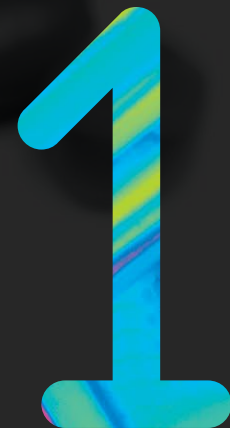


The hose is flat and takes on the classic round shape during use. When the flow stops, the hose returns to its original size, the water flows out and the product is immediately manageable, compact and easy to store.



WATCH THE VIDEO

\*Santoprene and Exxon are registered trademarks of Celanese.



# sustainability product features

In line with its 2030 sustainability strategy FITT offers a full range of commercial garden hoses whose production phase has been completely offset.

The FITT HiFlo, Force Pro, and Marine/RV hoses have been developed according to the following roadmap:

STEP	STEP	STEP
01	02	03
<b>TO MEASURE</b> Life Cycle Assessment (LCA)	<b>TO REDUCE CO2e</b> Innovation	<b>TO OFFSET CO2e</b> Carbon credit project
FITT measures the environmental impact of its products through certified LCA.	By applying its eco-design guidelines FITT is able to reduce the CO2 emissions of FITT HiFlo and FITT Force Pro by -43% CO2e compared to current FITT PVC hoses.	FITT offset the CO2 production emissions of FITT HiFlo and FITT Force Pro with GOLD STANDARD-certified carbon credits.



100% PRODUCTION CARBON NEUTRAL

Durable and compact next-generation hose for multipurpose use and commercial applications.

New technology allows **higher flow** in a **smaller diameter** than traditional hoses. Innovation in all aspects enhances ease of use in hose management, creates **sustainability** and improves the shopping experience.



**WHY SHOULD YOU BUY IT?**



- 1 - **2X LIGHTER** than a traditional PVC hose
- 2 - **3X MORE COMPACT** than a traditional PVC hose
- 3 - **LONG-LASTING** performance
- 4 - **SHELF SPACE ORGANIZATION** and **OPTIMIZATION**

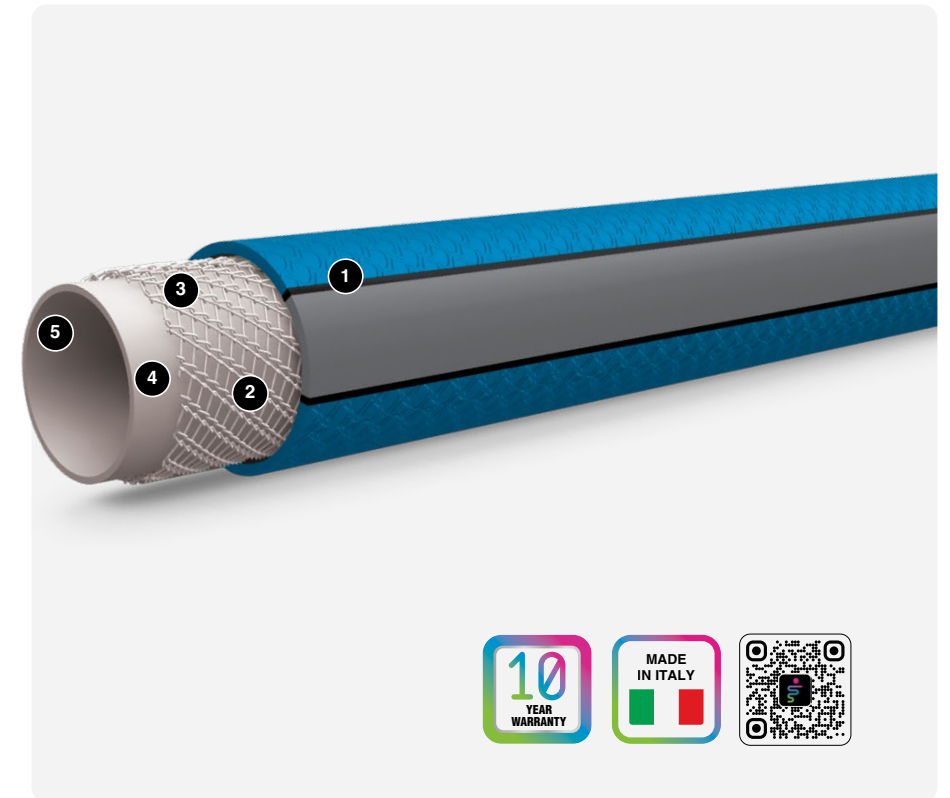


FITT's HiFlo is designed for multipurpose applications.

For consumers who **use their hose for everything** from watering plants to washing the car. Small gardens, terraces, balconies or large yards require a hose that **can be moved around easily**. Recreational activities such as camping or boating require a hose with the flexibility, ease of use and long-lasting performance.

- NO KINK NO TWIST
- EASY TO HANDLE
- DRINKING WATER SAFE
- COMPACT
- PVC FREE PVC FREE NO LEAKS
- PUNCTURE & ABRASION RESISTANT
- COLD WEATHER FLEXIBILITY

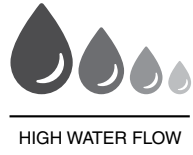
- 1  High Durable Technology (HD TECH) cover is abrasion resistant and puncture proof. High manageability and high flexibility in extremely cold temperatures (-4°F).
- 2  The NTS chain mesh technology eliminates flow restriction due to kinks and tangles.
- 3 High tenacity fiber reinforcement layer ensures pressure > 300 psi - from 29 psi to 100 psi.
- 4 No PVC, phthalates or lead – “drinking water safe!”
- 5 Ultra-soft inner core layer for superior manageability and high flexibility.



# fitt hiflo™ accessories

## COUPLINGS

- **ANODIZED ALUMINUM AND CRUSH-PROOF DESIGN** makes our couplings corrosion resistant and the strongest on the market
- **COMPRESSION FIT** construction forms a super strong, leakproof connection
- **REPAIRABLE** – the compression fit couplings can be removed and replaced without damaging the hose or couplings
- **STRAIN RELIEF COLLARS** ensure easy connection and uninterrupted flow



# fitt hiflo™ assortment - selling unit



Model Number	Description	UPC Code	Case UPC	INDIVIDUAL UNIT					
				Each Qty	Each Cube/Feet	Each Weight/LBS	Each Height Inches	Each Width Inches	Each Depth Inches
FFH51225	FITT HIFLO 25'	812554030514	28011963788320	1	0.09	1.56	2.95	9.84	5.51
FFH51250	FITT HIFLO 50'	812554030521	28011963788337	1	0.14	2.81	3.94	10.24	5.91
FFH51200	FITT HIFLO 100'	812554030538	28011963788344	1	0.27	5.28	5.71	11.02	7.28



Model Number	Case UPC	Case Pack Qty	Case Pack Cube/Feet	Case Pack Weight/LBS	Case Pack Height Inches	Case Pack Width Inches	Case Pack Depth Inches
FFH51225	28011963788320	8	0.93	14.67	6.61	20.47	11.81
FFH51250	28011963788337	8	1.33	24.92	8.58	21.26	12.60
FFH51200	28011963788344	4	1.30	23.97	6.42	22.83	15.35

# fitt force® pro

The strongest and lightest hose for professional use.

Our **innovative technology** guarantees the combination of **high performance** and durability with **exceptional lightness**. Thanks to highly advanced materials the product is **extremely lightweight**, ensuring ease of use even in the most **extreme situations**.



## WHY SHOULD YOU BUY IT?

- 1 - **2X LIGHTER** than a traditional PVC hose
- 2 - **3X MORE COMPACT** than a traditional PVC hose
- 3 - **LONG-LASTING** performance
- 4 - **SHELF SPACE ORGANIZATION** and **OPTIMIZATION**

FITT Force Pro is synonymous for innovation and quality with unique features.

The product is suitable for **intensive and professional use** such as **big yard watering, farming, landscaping, building site cleaning** and **industrial applications**.

- NO KINK NO TWIST
- EASY TO STORE
- DRINKING WATER SAFE
- COMPACT
- PVC FREE
- NO MORE LEAKS
- PUNCTURE & ABRASION RESISTANT
- COLD WEATHER FLEXIBILITY

1



High Durable Technology (HD TECH) cover is abrasion resistant and puncture proof. High manageability and high flexibility in extremely cold temperatures (-4°F).

2



Double NTS chain mesh technology reinforcement eliminates flow restriction due to kinks and tangles.

3

High tenacity fiber reinforcement layer ensures pressure > 450 psi - from 36 psi to 120 psi.

4

No PVC, phthalates or lead – “drinking water safe!”

5

Ultra-soft inner core layer for superior manageability and high flexibility.



# fitt force® pro accessories

## COUPLINGS

- **ANODIZED ALUMINUM AND CRUSH-PROOF DESIGN** make our couplings corrosion resistant and the strongest on the market
- **COMPRESSION FIT** construction forms a super strong, leakproof connection
- **REPAIRABLE** – the compression fit couplings can be removed and replaced without damaging the hose or couplings
- **STRAIN RELIEF COLLARS** ensure easy connection and uninterrupted flow



HIGH WATER FLOW

# fitt force® pro assortment - selling unit



				INDIVIDUAL UNIT					
Model Number	Description	UPC Code	Case UPC	Each Qty	Each Cube/Feet	Each Weight/LBS	Each Height Inches	Each Width Inches	Each Depth Inches
FFP55825	5/8" X 25' Commercial Grade Hose	812554030323	28011963786975	1	0.12	1.92	7.48	7.48	3.74
FFP59006	5/8" X 50' Commercial Grade Hose	812554030019	28011963772091	1	0.25	3.38	7.48	8.46	6.89
FFP59006QP	5/8" X 50' Commercial Grade Hose QP	812554030019	18011963772094	1	0.25	3.38	7.48	8.46	6.89
FFP55800	5/8" X 100' Commercial Grade Hose	812554030149	28011963782250	1	0.34	6.21	7.48	10.63	7.28
FFP58150	5/8" x 150' Commercial Grade Hose	812554030491	28011963787620	1	0.39	9.05	8.66	10.63	7.28
FFP53400	3/4" X 100' Commercial Grade Hose	812554030170	28011963782281	1	0.47	8.99	8.66	10.63	8.86



MASTER PACK							PALLET					
Model Number	Case Pack Qty	Case Pack Cube/Feet	Case Pack Weight/LBS	Case Pack Height Inches	Case Pack Width Inches	Case Pack Depth Inches	Pallet Qty	Pallet Cube/Feet	Pallet Weight/LBS	Pallet Height Inches	Pallet Width Inches	Pallet Depth Inches
FFP55825	8	1.37	16.92	9.06	16.54	15.75	240	56.7	536	51	40	48
FFP59006	6	2.25	22.72	9.06	18.50	23.23	120	56.7	483	51	40	48
FFP59006QP	24	12.25	137.16	34.65	26.78	22.83	24	12.25	150	34.65	26.78	22.83
FFP55800	4	1.85	26.94	9.06	22.44	15.75	80	56.7	568	51	40	48
FFP58150	4	2.01	38.42	9.84	22.44	15.75	64	53.3	643	48	40	48
FFP53400	4	2.42	38.38	9.84	22.44	18.90	64	53.3	643	48	40	48



# fitt marine & rv hose set

The high-quality hose and caddy are designed for ease of use and significant space savings.

Engineered to be the toughest and lightest hose designed for marine and RV use, it is **half the weight and more compact** than most heavy-duty vinyl hoses. It's easy to handle and makes cleaning easier than ever.

Combined with our convenient caddy, this hose set offers the **simplicity of organized storage** and is ideal for carrying.













## WHY SHOULD YOU BUY IT?

- 1 - **2X LIGHTER** than a traditional PVC hose
- 2 - **3X MORE COMPACT** than a traditional PVC hose
- 3 - **LONG-LASTING** performance
- 4 - **SHELF SPACE ORGANIZATION** and **OPTIMIZATION**



**FITT technology is durable and protects the hose from outdoor elements.**

The high-quality materials and innovative construction are **resistant to UV rays, salt air and water**, making the hose long lasting and durable even in the most severe conditions. Featuring **no PVC, phthalates or lead, the hose is drinking water safe**, kink, twist and abrasion resistant and offers a puncture-proof outer layer.

-  SALT RESISTANT
-  EASY TO STORE
-  UV RESISTANT
-  COMPACT
-  DRINKING WATER SAFE
-  NO MORE LEAKS
-  PVC FREE
-  PUNCTURE & ABRASION RESISTANT
-  NO KINK NO TWIST
-  NO MARRING

1



High Durable Technology (HD TECH) cover is abrasion resistant and puncture proof. High manageability and high flexibility in extremely cold temperatures (-4°F).

2



Double NTS chain mesh technology reinforcement eliminates flow restriction due to kinks and tangles.

3

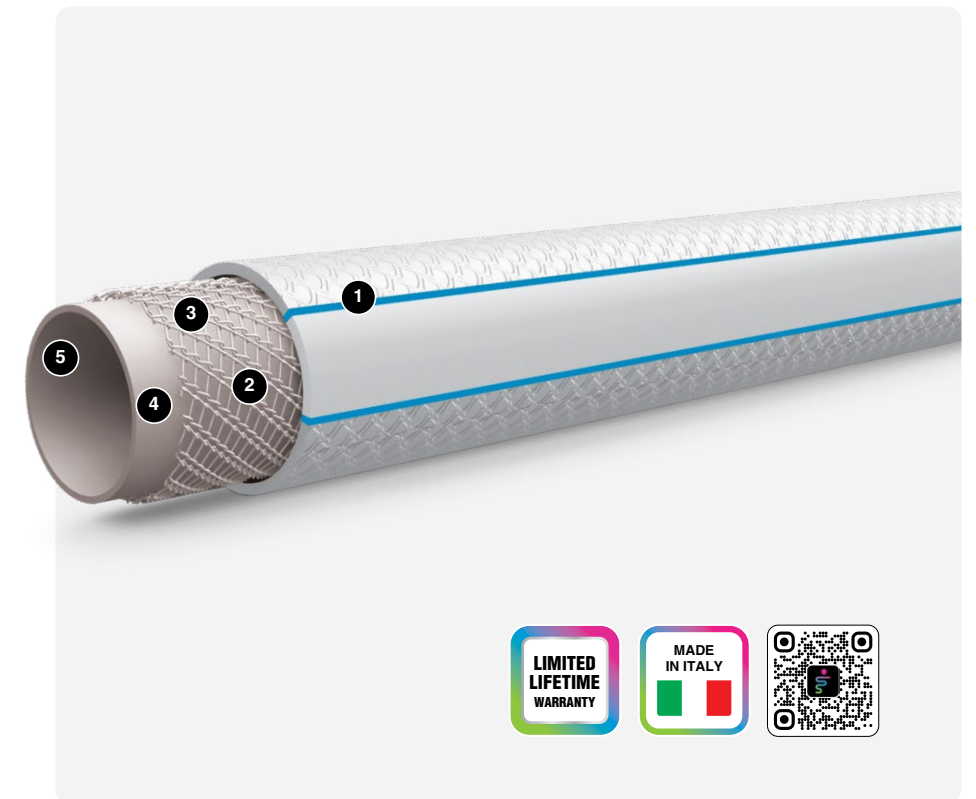
High tenacity fiber reinforcement layer ensures pressure > **300 psi** - from **29 psi** to **100 psi**.

4

No PVC, phthalates or lead – “drinking water safe!”

5

Ultra-soft inner core layer for superior manageability and high flexibility.



# fitt marine & rv accessories

## COUPLINGS

- **ANODIZED ALUMINUM AND CRUSH-PROOF DESIGN** makes our couplings corrosion resistant and the strongest on the market
- **COMPRESSION FIT** construction forms a super strong, leakproof connection
- **REPAIRABLE** – the compression fit couplings can be removed and replaced without damaging the hose or couplings
- **STRAIN RELIEF COLLARS** ensure easy connection and uninterrupted flow



HIGH WATER FLOW




# fitt marine & rv assortment - selling unit



			INDIVIDUAL UNIT						
Model Number	Description	UPC Code	Case UPC	Each Qty	Each Cube/ Feet	Each Weight/ LBS	Each Height Inches	Each Width Inches	Each Depth Inches
MAR00025	1/2" X 25' Marine RV Hose	812554030620	28011963790682	1	0.086	1.58	2.96	9.45	5.32
MAR00050	1/2" X 50' Marine RV Hose	812554030637	28011963790699	1	0.146	3.03	7.48	11.6	6.11
FCAD0025	1/2" X 25' Caddy Marine RV Hose	812554030712	28011963792471	1	0.238	2.36	7.48	7.9	5.51



MASTER PACK							PALLET					
Model Number	Case Pack Qty	Case Pack Cube/ Feet	Case Pack Weight/ LBS	Case Pack Height Inches	Case Pack Width Inches	Case Pack Depth Inches	Pallet Qty	Pallet Cube/ Feet	Pallet Weight/ LBS	Pallet Height Inches	Pallet Width Inches	Pallet Depth Inches
MAR00025	9	0.987	16.43	9.06	10.5	17.92	360	56.67	694.7	51	40	48
MAR00050	6	1.358	20.39	8.27	13.6	20.87	150	52.22	547.25	47	40	48
FCAD0025	2	0.616	5.463	10.91	8.43	11.58	128	54.44	387.13	49	40	48

FITT, NTS, , fitt, fitt force are registered trademarks of Fitt S.p.A.

FITT Force, FITT HiFlo, FITT Marine/RV are covered by several issued and pending US and international patents, design patents, and trademarks owned by FITT S.p.A. For more information, please visit [usa.fitt.com/patents](http://usa.fitt.com/patents).

For more information:

**FITT USA Inc.**  
136 Corporate Park Drive, Suite I  
Mooresville, North Carolina USA  
[customercare.usa@fitt.com](mailto:customercare.usa@fitt.com)  
[usa.fitt.com](http://usa.fitt.com)

FITT S.p.A. is a Benefit Company according to Italian Law number 208/205

