



**BRAUN**

**GARDEN PRODUCTS**



# Take the risk out of retail.



## Unique. Exciting. On-trend.

Drawing on worldwide trends, Braun Garden Products is pleased to present you with this year's carefully-curated selection of the best garden products available.

Our buyers travelled across the globe to bring you a wide range of products, from everyday pottery to seasonal decor. We are confident you'll find products that your customers will actually love.

With an unmatched variety of materials at our disposal — from wood to stone, galvanized metal, rattan and more — Braun Garden Products will appeal to even the most discerning gardener and designer.

**Visit our new website to browse through hundreds of products, see wholesale prices and easily place your order online.**

Find your next top-sellers at  
**[braungarden.com](https://www.braungarden.com)**



# Table of Contents



## Wooden Planters

- Homestead Collection .....7
- Adirondack Collection .....10
- Reclaimed Collection .....12
- Simply Wood .....13
- Travel Collection .....14



## Pottery Planters

- Eclectic Garden Boutique .....30
- Portofino Collection .....31
- Pottery Studio Collection .....42
- Pottery Studio Plus .....44
- Moon Glaze Collection .....45
- Tapestry Collection .....46



## Lanterns

- Artisan Collection .....66
- Eclectic Garden Boutique .....67



## Merchandisers

- Inspiration Gallery .....73



## Metal Planters

- Antique Color Collection .....16
- Aviary Collection .....18
- Boutique Collection .....19
- Farm House Find Collection .....20
- French Country Collection .....22
- Urban Collection .....24



## Hanging Basket

- Seagrass Collection .....48
- Algarve Collection .....48
- Adirondack Collection .....49
- Beehive Collection .....50
- Grapevine Collection .....51
- Leaf Collection .....51
- Evergreen Moss Collection .....52
- Panama Collection .....53
- Woodland Moss Baskets .....54
- Belize Collection .....55
- Grower's Essentials .....56



## Wicker Planters

- Artisan Collection .....69



## Accessories

- Woodland Moss Collection .....78
- Wreaths, Succulent Art & Chains .....79
- Braun Liners .....81
- Victorian Garden Emporium .....82
- Mother Nurture .....83



## Plastic Planters

- Spinners Wheel Collection .....28



## Sculptures

- Topiary Collection .....59



## Terrariums

- Eclectic Garden Boutique .....71



## Poly Resin

- Poly Resin Collection .....86-88



# Wooden Planters

A natural and renewable material, nothing matches the organic aesthetic of wood in the home or garden. Whether rustic or modern, a Braun wooden planter is made from the best nature has to offer.



## Homestead Collection

Traditional styling and rustic barn wood make these containers the classic accents every home and garden needs. Plastic lined.

### LARGE TWO TONE

5¾"x5¾"  
16 per case  
ITEM #: 02834



### MEDIUM TWO TONE

4½"x4½"  
16 per case  
ITEM #: 02833

### SMALL TWO TONE

3½"x3¼"  
16 per case  
ITEM #: 02832

### FLARED FLOWER POTS

6"x9½"  
8"x11½"  
9¾"x14"  
4 sets of 3 per case  
ITEM #: 02835





**BRICK MOLDS**  
11¼"x5¾"x3½"  
12 per case  
ITEM #: 02839

**YELLOW SQUARE DRAWERS**  
7"x7"x7"  
6"x6"x6"  
4½"x4½"x4½"  
6 Sets of 3 per case  
ITEM #: 02704



**LOW RECTANGLE**  
8½"x5"x4"  
Case pack 16  
ITEM #: 02803



**HIGH RECTANGLE**  
7"x5"x4½"  
Case pack 16  
ITEM #: 02804



**TOOL BOX**  
13"x7"x6"  
Case pack 16  
ITEM #: 02809



**SQUARE BOX**  
8½"x8½"x5"  
Case pack 16  
ITEM #: 02800



**HIGH SQUARE BOX**  
6"x6"x6"  
Case pack 16  
ITEM #: 02802



**WATER BUCKET**  
8"x7½"  
Case pack 16  
ITEM #: 02805



**BLACK SQUARE DRAWERS**  
7"x7"x6"  
6"x6"x6"  
3½"x3½"x4½"  
6 Sets of 3 per case  
ITEM #: 02700



**TURQUOISE RECTANGULAR DRAWERS**  
13"x5½"x6"  
11½"x5"x5½"  
9½"x4½"x4"  
4 sets of 3 per case  
ITEM #: 02708

**LOW SQUARE BOX**  
4½"x4½"x4"  
Case pack 16  
ITEM #: 02801



**SINGLE DRAWER PLANTER**  
4½"x4½"x4"  
Case pack 16  
ITEM #: 02813



**CUBED DRAWERS**  
4"x4"x4½"  
5½"x5½"x5½"  
7"x7"x6½"  
5 sets of 3 per case  
ITEM #: 02816

**SQUARE DRAWER PLANTER**  
8"x8"x4"  
Case pack 16  
ITEM #: 02817

**LONG WOODEN TROUGH**  
19"x10"x3½"  
16½"x8½"x3"  
13½"x7¼"x2½"  
4 sets of 3 per case  
ITEM #: 02810



**CROSS-HATCH CUBE**  
9½"x9½"x11"  
8"x8"x9½"  
4 sets of 2 per case  
ITEM #: 02718



**DOUBLE DRAWER PLANTER**  
9"x4½"x4"  
Case pack 16  
ITEM #: 02814



**TRIPLE DRAWER PLANTER**  
13"x4½"x4"  
Case pack 16  
ITEM #: 02815



# Adirondack Collection

Resembling the attractive texture of tree bark, this collection hints at the towering birch trees of the Adirondack Mountains. Each of these wooden pieces has a charming, rustic simplicity. Plastic lined.



**ADIRONDACK TROUGH**  
20½"x6"x3"  
12 per case  
ITEM #: 26308



**ADIRONDACK RECTANGULAR SET**  
10½"x3"x2½"  
12"x4"x3½"  
8 sets of 2 per case  
ITEM #: 26309



**ADIRONDACK SQUARE TRAY (LRG)**  
10"x10"x2½"  
12 per case  
ITEM #: 26315

**ADIRONDACK SQUARE TRAY (SM)**  
8"x8"x2½"  
12 per case  
ITEM #: 26314



**ADIRONDACK CACHE POT (MED)**  
6"x4¾"  
16 per case  
ITEM #: 26312

**ADIRONDACK CACHE POT (SM)**  
5"x4¼"  
16 per case  
ITEM #: 26311

**ADIRONDACK CACHE POT (LRG)**  
7"x5¼"  
16 per case  
ITEM #: 26313

# Reclaimed Collection

The use of reclaimed or salvaged wood isn't a new concept. But a surge in popularity is in full bloom. Reclaimed weathered wood is being salvaged from old barns, factories, and warehouses. It's wood with a past life, now used for a new purpose. Plastic lined.

**RECLAIMED TOTE**  
9½"x5¼"x12"  
12 per case  
ITEM #: 02673



**RECTANGULAR TROUGH**  
11"x4"x3"  
11½"x5½"x3½"  
6 sets of 2 per case  
ITEM #: 02657



**RECLAIMED HANDBAG**  
7"x7"x11¼"  
12 per case  
ITEM #: 02674



**RECTANGULAR CRATE**  
10"x6½"x6"  
12½"x9"x6"  
6 sets of 2 per case  
ITEM #: 02660

**RECLAIMED PURSE**  
8½"x4"x10"  
12 per case  
ITEM #: 02675



**FLOWER BASKET**  
10"x6"x11"  
12"x8"x15"  
4 sets of 2 per case  
ITEM #: 02650



**MEDIUM SQUARE BOX**  
7"x4"  
16 per case  
ITEM #: 02671



**LARGE SQUARE BOX**  
8¼"x4½"  
16 per case  
ITEM #: 02672

**SMALL SQUARE BOX**  
5½"x3½"  
16 per case  
ITEM #: 02670



# Simply Wood Collection

The name belies this charming assortment of cozy wooden containers in a palette of colors any designer would envy. Plastic lined.

**PASTEL PINK**  
6½"x6½" 16 per case  
ITEM #: 08012  
13"x10" 16 per case  
ITEM #: 08014  
11"x5½" 16 per case  
ITEM #: 08015



**EVERGREEN**  
6½"x6½" 16 per case  
ITEM #: 08008  
13"x10" 16 per case  
ITEM #: 08010



**AUTUMN ORANGE**  
6½"x6½" 16 per case  
ITEM #: 08000  
13"x10" 16 per case  
ITEM #: 08002

# Travel Collection

Transport your decor to faraway lands with this globally-inspired selection. Perfect for plants and excellent as accents, it's an anthology of design and distinction. Each includes a plastic liner.



**VINTAGE HANDBAG**  
10"x8½"x4¼"  
8 per case  
ITEM #: 30060



**VINTAGE LUGGAGE**  
15½"x6½"x11"  
14"x5½"x9"  
12½"x4¼"x7"  
3 sets of 3 per case  
ITEM #: 30061



**LUGGAGE PLANTERS**  
15½"x5½"x11½"  
13½"x5"x9½"  
12"x4"x8"  
2 sets of 3 per case  
ITEM #: 30044



**EURO BOOK PLANTERS**  
9"x3"x12"  
7"x2½"x9½"  
5"x2"x7"  
2 sets of 3 per case  
ITEM #: 30048



**PARIS BOOK PLANTERS**  
9"x3"x12"  
7"x2½"x9½"  
5"x2"x7"  
2 sets of 3 per case  
ITEM #: 30056



**BICYCLE BOOK PLANTERS**  
9"x3"x12"  
7"x2½"x9½"  
5"x2"x7"  
2 sets of 3 per case  
ITEM #: 30052



**HAT BOX PLANTERS**  
13"x5"x11½"  
11"x4"x9½"  
9½"x3"x8"  
2 sets of 3 per case  
ITEM #: 30040

# Metal Planters

A long-lasting and durable choice, metal planters will stand the test of time. Choose from variety of finishes, colors and styles to find the perfect fit for your customers.





# Antique Color Collection

Classic galvanized gets a remix in this sassy selection of handcrafted metal containers in styles and sizes to suit any setting. Plastic lined.



**HEXAGON RECTANGULAR PLANTERS**  
12½"x6"x7"  
11½"x5"x5½"  
10¼"x4¼"x5¼"  
4 sets of 3 per case  
ITEM #: 02355

**LACE PLANTER WITH STANDS**  
8½"x8½"x17"  
9¾"x9¾"x19"  
11"x11"x21"  
4 sets of 3 per case  
ITEM #: 02347



**STAMPED FLORAL PLANTERS**  
6½"x10½"  
7½"x11½"  
8"x12½"  
4 sets of 3 per case  
ITEM #: 02365



**NOTTINGHAM PLANTERS**  
9"x14"  
10"x17½"  
4 sets of 2 per case  
ITEM #: 02362

**HEXAGON ROUND PLANTERS**  
6.5"x9"  
7.5x10"  
8"x11¼"  
4 sets of 3 per case  
ITEM #: 02351



**ROUND DAISY PLANTERS**  
8"x29"  
9"x32½"  
10"x35½"  
2 sets of 3 per case  
ITEM #: 02359

**MOTIF PLANTERS**  
8"x 8"x11"  
10"x10"x13"  
11"x11"x16"  
4 sets of 3 per case  
ITEM #: 02004



**RIPPLED PLANTER**  
11"x9½"x9½"  
9¼"x7¼"x7¼"  
8"x6"x6"  
4 sets of 3 per case  
ITEM #: 02392



**GRAIN PAIL**  
10"x9"  
11"x10"  
12"x11"  
4 sets of 3 per case  
Antique Lilac  
ITEM #: 02032  
Antique Orange  
ITEM #: 02035  
Antique Blue  
ITEM #: 02036  
Antique Yellow  
ITEM #: 02038



**ASSORTED GRAIN PAILS**  
3 of each color  
4 sets per case  
ITEM #: 02037



**VINTAGE BOOT PLANTERS**  
10½"x5"x14"  
2 of each color  
6 boots per case  
ITEM #: 02340



**OVAL PAILS**  
10"x6"x8"  
12"x7"x8"  
13"x7"x9"  
6 sets of 3 per case  
ITEM #: 02013



**LAMP PLANTERS**  
9"x9"x14"  
2 of each color  
6 per case  
ITEM #: 02344

**WATERING CAN**  
8½"x9"  
12 per case  
Antique Lilac  
ITEM #: 02041  
Antique Orange  
ITEM #: 02044  
Antique Blue  
ITEM #: 02045  
Antique Yellow  
ITEM #: 02046



**ASSORTED COLOR WATERING CANS**  
8½"x9"  
3 of each color  
12 per case  
ITEM #: 02047

# Aviary Collection

Once known only as enclosures for confining birds, aviaries soar to new heights of possibility in our inspirational interpretations. With container gardening at an all-time high, we're all looking for the missing piece to complete our works of art, and now the search is over.



**NEW**  
**CHICK-INN**  
9" x 15" x 4 1/2"  
4 per case  
ITEM #: 01506

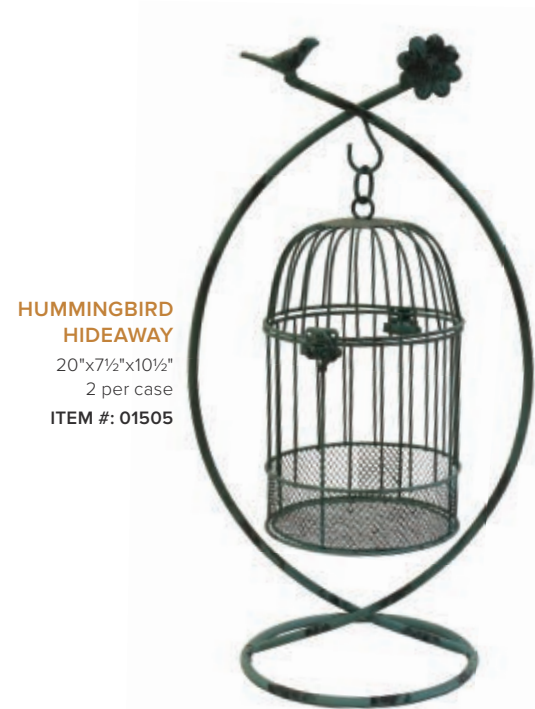
**NEW**  
**HIDDEN HAPPINESS**  
8" x 7 1/2"  
8 per case  
ITEM #: 01507



**NEW**  
**HOME TWEET HOME**  
11 1/4" x 7 1/4" x 6 3/4"  
3 per case  
ITEM #: 01508



**BLUE BIRD DEN**  
20"x9"  
15"x8"  
2 sets of 2 per case  
ITEM #: 01504



**HUMMINGBIRD HIDEAWAY**  
20"x7 1/2"x10 1/2"  
2 per case  
ITEM #: 01505

# Boutique Collection

Old world charm meets new world elegance in a très chic selection of subtly designed galvanized containers. Each includes plastic liner.



**LILAC**  
4" 16 per case  
ITEM #: 02903  
6" 16 per case  
ITEM #: 02904  
8" 16 per case  
ITEM #: 02905

**OBLONG GARDEN TROUGH SET**  
8 1/2"x5"x4 1/2"  
10"x5 1/2"x5"  
11"x6"x5"  
6 sets of 3 per case  
ITEM #: 02460



**GARDEN PAIL LARGE**  
7 1/2"x6 1/2"  
16 per case  
ITEM #: 02466



**GARDEN PAIL MEDIUM**  
6 1/2"x5"  
16 per case  
ITEM #: 02465

**GARDEN BOWL LARGE**  
10"x5"  
16 per case  
ITEM #: 02463



**GARDEN BOWL SMALL**  
8"x3"  
16 per case  
ITEM #: 02461



**GARDEN BOWL MEDIUM**  
9"x4"  
16 per case  
ITEM #: 02462



**GARDEN PAIL SMALL**  
5"x5"  
16 per case  
ITEM #: 02464



**BOUTIQUE ROUND PLANTERS**  
10"x10"x8"  
16 per case  
ITEM #: 02472



**BOUTIQUE OBLONG TROUGH SET**  
7"x4"x4"  
9"x5"x4 1/2"  
10"x6"x5"  
6 sets of 3 per case  
ITEM #: 02467



**BOUTIQUE OBLONG BUCKETS**  
9"x6 1/2"x11 1/2"  
10 1/2"x8"x12"  
2 sets of 2 per case  
ITEM #: 02470

# Farm House Finds

Think of these rustic chic pieces as country with an edge. Perfectly weathered and expertly detailed, they'll add just the right touch of clever charm to even the most urbane settings.



**OVAL FARM CONTAINER**  
12½"x8"x8½"  
14"x9"x9½"  
4 sets of 2 per case  
ITEM #: 08078



**HARDWARE CAROUSEL**  
14"x14"x18"  
2 per case  
ITEM #: 08063



**OIL CAN**  
6½"x6½"x12"  
4 per case  
ITEM #: 08073



**FRENCH WATERING CAN**  
12"x5½"x7"  
12 per case  
ITEM #: 08068



**WATER JUG**  
7½"x6"x13"  
4 per case  
ITEM #: 08059



**MINING CONTAINER**  
8"x8"x22"  
2 per case  
ITEM #: 08053



**ENGLISH WATERING CAN**  
17½"x7"x16"  
4 per case  
ITEM #: 08067



**TOOL CARRIER**  
17"x7"x11½"  
4 per case  
ITEM #: 08054



**DISH GARDEN LARGE**  
11"x11"x3½"  
16 per case  
ITEM #: 03026

**DISH GARDEN MEDIUM**  
9½"x9½"x3"  
16 per case  
ITEM #: 03025

**DISH GARDEN SMALL**  
6"x6"x2½"  
16 per case  
ITEM #: 03024



**EGG CONTAINER**  
6"x6½"  
7"x7"  
7½"x8"  
6 sets of 3 per case  
ITEM #: 08074



**METAL GARDEN BASKET**  
10½"x5½"x7"  
9½"x4½"x6½"  
8½"x4"x5"  
4 sets of 3 per case  
ITEM #: 08069

**SQUARE OLIVE CONTAINER**  
4¾"x4¾"x4¾"  
6¼"x6¼"x5½"  
7¾"x7¾"x6½"  
4 sets of 3 per case  
ITEM #: 08084



**BULB BOXES**  
9"x6"x4½"  
10½"x7"x5"  
12"x8"x5½"  
2 sets of 3 per case  
ITEM #: 08055



**MINI COVERED TRAILER**  
12½"x8"x7½"  
4 per case  
ITEM #: 08065

**VINTAGE BICYCLE**  
41"x11"x25"  
1 per case  
ITEM #: 08066



**OBLONG OLIVE CONTAINER**  
17¼"x3¾"x4½"  
22½"x6"x5"  
6 sets of 2 per case  
ITEM #: 08081



**SQUARE CACHEPOT LARGE**  
8½"x6"  
16 per case  
ITEM #: 03030



# French Country Collection

Our French-inspired collection of rustic, old-world, farmhouse-style containers offers a charming flair to your home and garden. Each includes a plastic liner.



**NEW**

**BLACK ROUND PLANTERS**

6½"x7½"  
8"x8"  
8½"x9"  
4 sets of 3 per case  
ITEM #: 23037



**TURQUOISE CYLINDER PLANTERS**

8½"x3½"  
9½"x4"  
10½"x4½"  
4 sets of 3 per case  
ITEM #: 23031



**TURQUOISE ROUND PLANTER**

6½"x7½"  
8"x8"  
8½"x9"  
4 sets of 3 per case  
ITEM #: 23027



**NEW**

**BLACK OVAL TROUGHS**

7"x5"x4"  
8½"x6"x5"  
9½"x7½"x5½"  
4 sets of 3 per case  
ITEM #: 23040



**NEW**

**BLACK WATER CAN**

13"x7"x5" (opening 5")  
12 per case  
ITEM #: 23036



**TURQUOISE OBLONG**

12"x5½"x3½"  
14"x6½"x4"  
15½"x7"x4½"  
4 sets of 3 per case  
ITEM #: 23035



**TROUGH**

17½"x9"x6½"  
16"x8"x5½"  
13"x7½"x4½"  
4 sets of 3 per case  
ITEM #: 23015

**GARDEN PAIL**

8½"x8¼"  
7½"x7¼"  
6"x6¼"  
6 sets of 3 per case  
ITEM #: 23007



**OBLONG**

13"x7"x5½"  
10"x5½"x4½"  
6 sets of 2 per case  
ITEM #: 23013



**GARDEN BOWL**

14"x7"  
12"x7"  
10"x6½"  
4 sets of 3 per case  
ITEM #: 23000



**MILK CAN LARGE**

6½"x6½"x8"  
12 per case  
ITEM #: 23021

**MILK CAN MEDIUM**

5½"x5½"x6½"  
12 per case  
ITEM #: 23020

**WATERING CAN**

10½"x10"x4½"  
6 per case  
ITEM #: 23018



**FARM CAN**

7"x5½"  
6 per case  
ITEM #: 23004



**HAMMERED ROUND**

13"x9½"  
14"x12"  
4 sets of 2 per case  
ITEM #: 23010



**FLUTED UPRIGHT**

14"x12½"  
12"x9½"  
4 sets of 2 per case  
ITEM #: 23005



# Urban Collection

Modern sophistication comes to life in this galvanized collection that delivers the earthy yet urban appeal today's trendsetters seek — complementing even the most discerning decor. Each comes plastic-lined.

**COAL BUCKET**

9 1/4" x 9 1/4" x 24"  
8" x 8" x 18 1/2"  
7" x 7" x 13"  
4 sets of 3 per case  
ITEM #: 02017



**NEW**

**GALVANIZED TUBS**

6" x 7"  
5" x 5 1/2"  
4 1/4" x 4"  
4 sets of 3 per case  
ITEM #: 02082



**NEW**

**TOM-TOMS**

7 1/2" x 6 1/2"  
6 3/4" x 5 1/2"  
6" x 4 3/4"  
4 sets of 3 per case  
ITEM #: 02078



**RECTANGULAR DECK PLANTERS**

6 1/2" x 8" x 19"  
12 per case  
ITEM #: 02026



# Urban Collection continued



**OVAL HONEYCOMB**

10 1/2" x 7" x 6 1/2"  
13" x 8" x 7 1/2"  
14 1/2" x 9 1/2" x 8"  
6 sets of 3 per case  
ITEM #: 02074



**ROUND HONEYCOMB**

9" x 6 1/2"  
11" x 7 1/2"  
13" x 8"  
6 sets of 3 per case  
ITEM #: 02070

**RECTANGLE HONEYCOMB**

10 1/2" x 6 1/2" x 6 1/2"  
12" x 8" x 7"  
14" x 10" x 8"  
6 sets of 3 per case  
ITEM #: 02066





**GALVANIZED TRAYS**  
12"x6"x5½"  
15"x7"x6"  
8 sets of 2 per case  
ITEM #: 02058



**SQUARE GALVANIZED PLANTERS**  
10"x10"x10"  
12"x12"x11"  
13½"x13½"x12"  
2 sets of 3 per case  
ITEM #: 02062



**LARGE GALVANIZED TROUGH**  
23"x6"x6"  
12 per case  
ITEM #: 02061



**SMALL GALVANIZED TROUGH**  
19½"x4½"x5"  
12 per case  
ITEM #: 02060



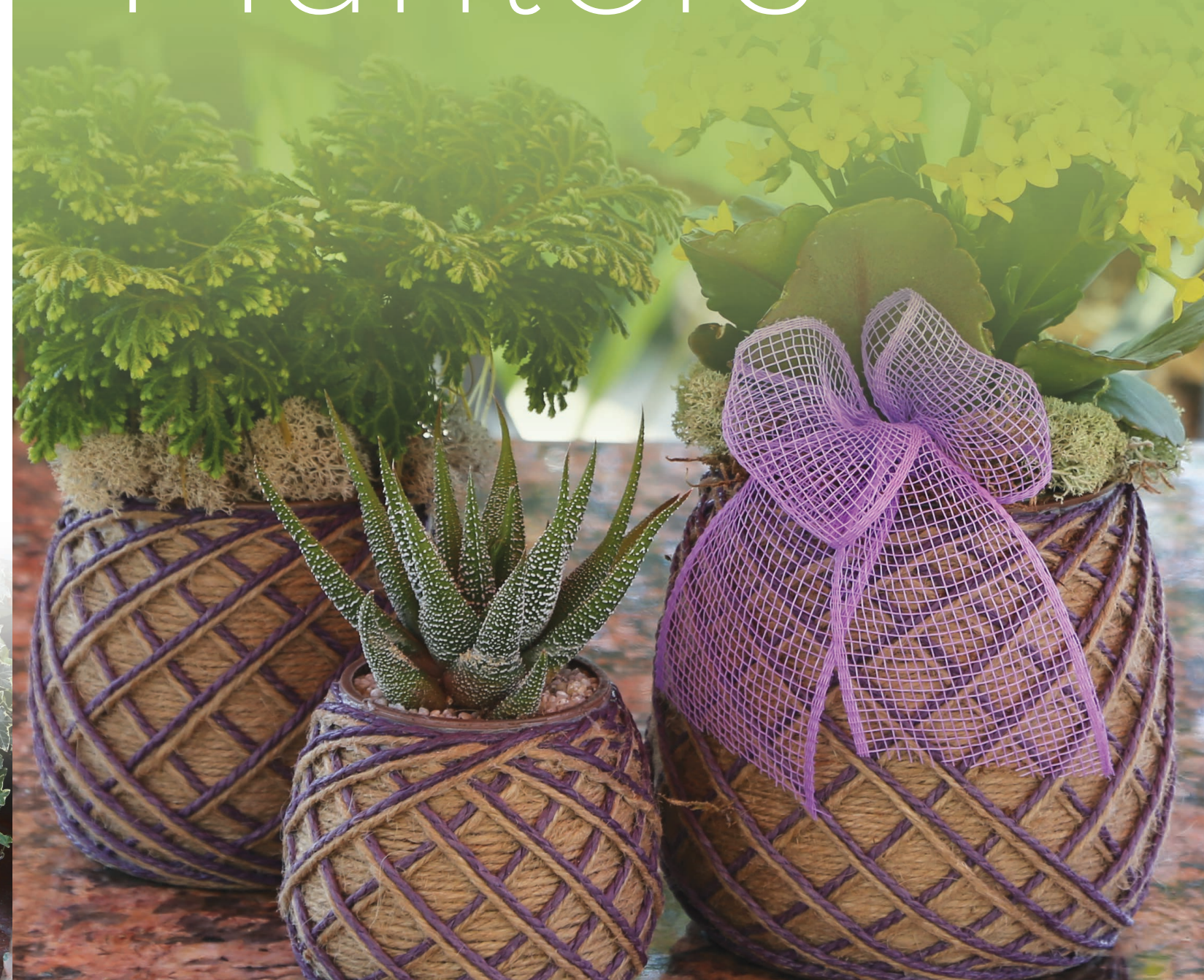
**OVAL GALVANIZED PLANTERS**  
13"x8"x7"  
15"x10"x8"  
17½"x12"x10"  
4 sets of 3 per case  
ITEM #: 02050



**UPRIGHT GALVANIZED PLANTERS**  
8"x14"  
10"x16½"  
12"x20"  
2 sets of 3 per case  
ITEM #: 02054



# Plastic Planters



# Spinners Wheel Collection

The Spinners Wheel Collection is a bright, colorful collection of perfect handwoven yarn on plastic containers suitable for drop-ins or planting directly into. Add a splash of color into your decor with three different colors and three different sizes to choose from.



**PINK LARGE**  
5"x4"  
(opening 3¾")  
24 per case  
ITEM #: 08030

**PINK MEDIUM**  
4¼"x3½" (opening 3⅝")  
24 per case  
ITEM #: 08029

**PINK SMALL**  
3¼"x2¾" (opening 2⅝")  
24 per case  
ITEM #: 08028



**LEMON MEDIUM**  
4¼"x3½"  
(opening 3⅝")  
24 per case  
ITEM #: 08023

**LEMON SMALL**  
3¼"x2¾"  
(opening 2⅝")  
24 per case  
ITEM #: 08022

**LEMON LARGE**  
5"x4" (opening 3¾")  
24 per case  
ITEM #: 08024



**PURPLE MEDIUM**  
4¼"x3½" (opening 3⅝")  
24 per case  
ITEM #: 08035

**PURPLE SMALL**  
3¼"x2¾"  
(opening 2⅝")  
24 per case  
ITEM #: 08034

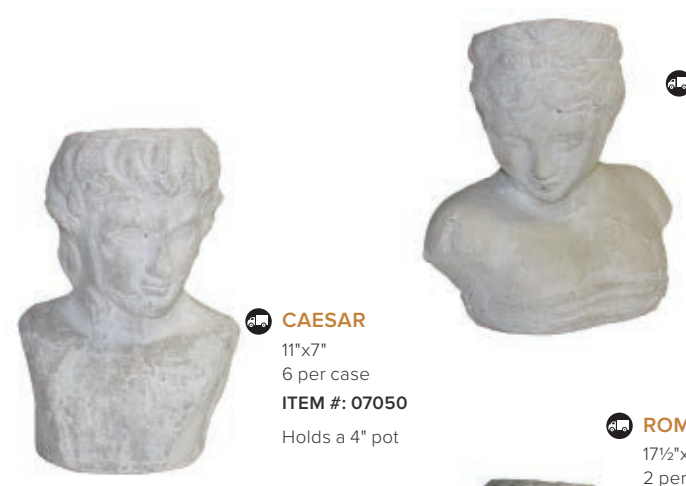
# Pottery Planters



Items on this page ship on a pallet.

# Eclectic Garden Boutique

High fashion and home garden seamlessly meld in this collection of garden accessories made for cross-selling.



**CAESAR**  
11"x7"  
6 per case  
ITEM #: 07050  
Holds a 4" pot

**CLEOPATRA**  
10"x9"  
6 per case  
ITEM #: 07051  
Holds a 4" pot



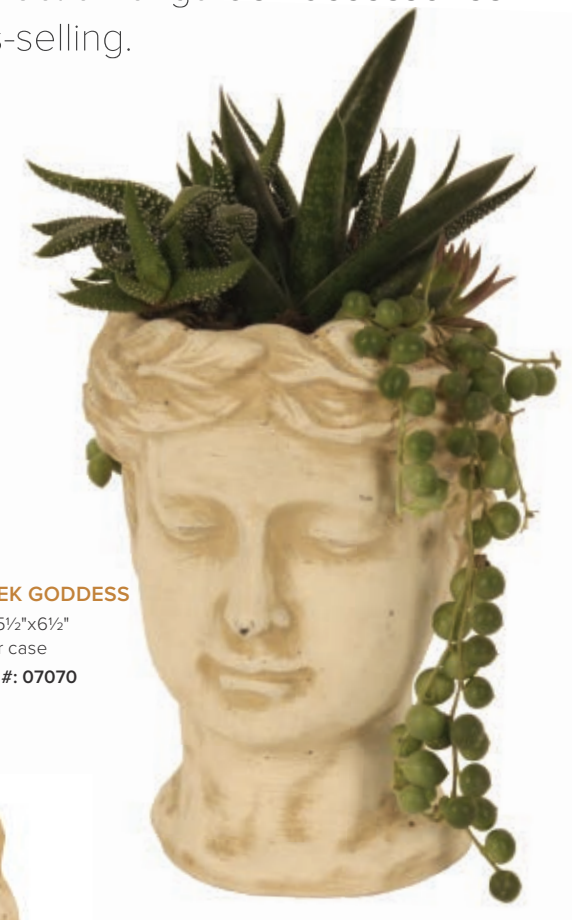
**ROMEO**  
17 1/2"x10"x7"  
2 per case  
ITEM #: 07064  
Holds a 5" pot



**JULIET**  
16"x9"x6"  
2 per case  
ITEM #: 07065  
Holds a 5" pot



**EASTER ISLAND HEAD**  
5 1/4"x4 3/4"x8"  
12 per case  
ITEM #: 07069



**GREEK GODDESS**  
4 1/2"x5 1/2"x6 1/2"  
12 per case  
ITEM #: 07070



**NEW**  
**STACY**  
6 1/2" x 5 1/2"  
6 per case  
ITEM #: 07073



**NEW**  
**LEON**  
7 1/2" x 4 1/2"  
6 per case  
ITEM #: 07071



**NEW**  
**NED**  
9" x 5"  
6 per case  
ITEM #: 07072

# Portofino Collection

These planters are lightweight, durable, eco-friendly and aesthetically pleasing. Made from clays and other naturally-found materials, they're frost-proof and UV-resistant, so they can be enjoyed year-round.



**AGED BRONZE PLANTER** **NEW**  
16" x 15"  
12" x 11"  
8" x 7 1/2"  
3pc per set  
ITEM #: 04201



**HANGING HONEYCOMB CONTAINER** **NEW**  
9" x 9 3/4"  
7 1/2" x 7 1/2"  
2pc per set  
ITEM #: 04195



**CAMELLIA BELL** **NEW**  
19 1/2" x 15"  
15" x 11 1/2"  
10 1/2" x 8"  
3pc per set  
ITEM #: 04179



**BRONZE LEAF MONSTERA** **NEW**  
19 1/2" x 15 1/2"  
15" x 11 1/2"  
12" x 8"  
3pc per set  
ITEM #: 04167



**MAJESTIC TOWER** **NEW**  
20" x 17 1/2"  
15 1/4" x 13 1/2"  
12 1/2" x 11 1/2"  
3pc per set  
ITEM #: 04183



**NEW** **SEAMLESS SQUARE**  
19 1/2" x 17 3/4"  
15 1/4" x 13 1/2"  
12" x 11"  
3pc per set  
ITEM #: 04171



Items on these two pages ship on a pallet.



NEW

**SUNBURST MORNING**  
23" x 14"  
19" x 12"  
15 1/2" x 9 3/4"  
3pc per set  
ITEM #: 04191



**CHISELED UPRIGHT**  
22 1/2" x 16 1/2"  
17 1/2" x 13"  
13 1/2" x 10"  
3pc per set  
ITEM #: 04175

NEW



NEW

**HANGING HONEYCOMB BOWLS**  
5 1/2" x 10 1/2"  
4" x 7 1/2"  
2pc per set  
ITEM #: 04198



**LOTUS UPRIGHT**  
26 1/2" x 13"  
21" x 10"  
16" x 8"  
3pc per set  
ITEM #: 04187

NEW



NEW

**ALYSSUM PLANTER**  
17 1/2" x 17 1/2"  
14 1/2" x 14 1/2"  
12" x 12"  
3pc per set  
ITEM #: 04205

# Portofino collection continued



NEW

**TOWER HILL**  
25 1/2" x 12 1/2"  
17" x 8 1/2"  
2 pc per set  
ITEM #: 04215



NEW

**KINSMEN CANAL**  
24 1/2" x 13 1/2"  
18 1/2" x 9 1/2"  
2 pc per set  
ITEM #: 04212



NEW

**STURGEON UPRIGHT**  
24 1/2" x 12 1/2"  
17 1/2" x 8"  
2 pc per set  
ITEM #: 04218



NEW

**AZTEC PLANTER**  
17" x 17 1/2"  
14" x 14 1/2"  
12" x 12"  
3pc per set  
ITEM #: 04221



**NEW**  
**BELLEVUE MARATHON**  
 17" x 17 1/2"  
 14" x 14 1/2"  
 12" x 12 1/2"  
 3pc per set  
**ITEM #: 04255**

**NEW**  
**SILVER BEACH**  
 17" x 17 1/2"  
 14" x 14 1/2"  
 12" x 12 1/2"  
 3pc per set  
**ITEM #: 04229**



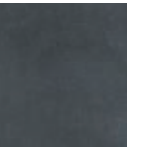
**NEW**  
**AUTUMN LEAF**  
 17 1/2" x 16"  
 13 1/2" x 12"  
 2 pc per case  
**ITEM #: 04233**



**NEW**  
**SNOW MOON**  
 18" x 22"  
 11" x 14"  
 2 pc per set  
**ITEM #: 04236**



**CUBE PLANTER (NATURAL)**  
 10"x10"x10"  
 12"x12"x12"  
 16"x16"x16"  
 20"x20"x20"  
 4 pieces per set  
**ITEM #: 04001**

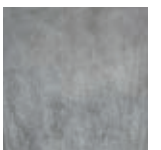


**CUBE PLANTER (SLATE)**  
**ITEM #: 04002**

**CYLINDER PLANTER (SAND STONE)**  
 10 1/2"x10 1/2"x10"  
 13 1/2"x13 1/2"x12 1/2"  
 16 1/2"x16 1/2"x15 1/4"  
 19 3/4"x19 3/4"x19 1/2"  
 4 pieces per set  
**ITEM #: 04003**



**FLARED PLANTER (SLATE)**  
 10"x10"x15 3/4"  
 12 1/2"x12 1/2"x19 3/4"  
 15 1/2"x15 1/2"x23 1/2"  
 19"x19"x27 1/2"  
 4 pieces per set  
**ITEM #: 04008**



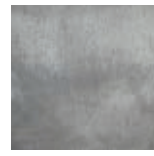
**FLARED PLANTER (NATURAL)**  
**ITEM #: 04006**

Items on these two pages ship on a pallet.



**SPHERE PLANTER (SLATE)**

12¼"x12¼"x9"  
16¼"x16¼"x12"  
21¾"x21¾"x15¼"  
26¾"x26¾"x19¼"  
4 pieces per set  
ITEM #: 04023



**SPHERE PLANTER (NATURAL)**

ITEM #: 04021

**CLASSIC SQUARE PLANTER (SLATE)**

11¾"x11¾"x12¼"  
15"x15"x14½"  
17¾"x17¾"x16¾"  
20½"x20½"x19½"  
4 pieces per set  
ITEM #: 04017



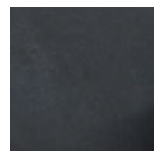
**CLASSIC SQUARE PLANTER (NATURAL)**

ITEM #: 04015



**BOWL PLANTER (NATURAL)**

11¾"x11¾"x5¼"  
18¼"x18¼"x8"  
21½"x21½"x9"  
3 pieces per set  
ITEM #: 04009



**BOWL PLANTER (SLATE)**

ITEM #: 04011

# Portofino Collection continued



**RIM PLANTER (SAND STONE)**

11½"x11½"x11¾"  
14½"x14½"x15"  
17¾"x17¾"x18"  
21½"x21½"x21¾"  
4 pieces per set  
ITEM #: 04019



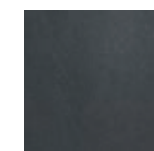
**ROUND UPRIGHT PLANTER (NATURAL)**

9¾"x9¾"x15¾"  
11¾"x11¾"x20½"  
15¾"x15¾"x22¼"  
19¾"x19¾"x27½"  
4 pieces per set  
ITEM #: 04027



**ROUND PLANTER (NATURAL)**

11¼"x11¼"x13¼"  
14¼"x14¼"x16½"  
17¼"x17¼"x20"  
21¾"x21¾"x25¼"  
4 pieces per set  
ITEM #: 04030



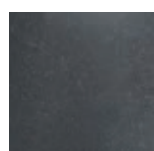
**ROUND PLANTER (SLATE)**

ITEM #: 04032



**CLASSIC ROUND PLANTER (NATURAL)**

12¼"x12¼"x9"  
16¼"x16¼"x11¾"  
21½"x21½"x15¼"  
3 pieces per set  
ITEM #: 04034



**CLASSIC ROUND PLANTER (SLATE)**

ITEM #: 04035

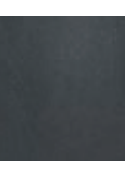
Items on these two pages ship on a pallet



**ROLLED RIM (NATURAL)**  
 21"x21"x19"  
 18"x18"x15½"  
 13½"x13½"x13"  
 10"x10"x9½"  
 4 pieces per set  
**ITEM #: 04067**



**FLUTED BOWL PLANTER (SANDSTONE)**  
 10"x10"x5"  
 14½"x14½"x7½"  
 18"x18"x10"  
 3 pieces per set  
**ITEM #: 04059**



**RECTANGULAR PLANTER (SLATE)**  
**ITEM #: 04057**



**TALL SQUARE PLANTER (SLATE)**  
 8¾"x8¾"x19¾"  
 11"x11"x23½"  
 14¼"x14¼"x27½"  
 17"x17"x31½"  
 4 pieces per set  
**ITEM #: 04038**



**RECTANGULAR PLANTER (NATURAL)**  
 20"x7"x11"  
 25"x10½"x12"  
 2 pieces per set  
**ITEM #: 04055**

# Portofino collection continued



**SCROLLED CUBE PLANTER (WHITE WASH)**  
 10"x10"x10"  
 12"x12"x12"  
 16"x16"x16"  
 20"x20"x20"  
 4 pieces per set  
**ITEM #: 04047**



**TALL CYLINDER (AVOCADO)**  
 7½"x7½"x18"  
 11½"x11½"x24"  
 15"x15"x31"  
 3 pieces per set  
**ITEM #: 04082**



**TALL FLUTED (AVOCADO)**  
 11"x11"x9½"  
 14"x14"x10½"  
 18"x18"x13"  
 3 pieces per set  
**ITEM #: 04097**



**TALL SCRIBED PLANTER**  
 10½"x10½"x20"  
 13"x13"x24"  
 17"x17"x31"  
 3 pieces per set  
**ITEM #: 04117**



**TAPERED SQUARE (SANDSTONE)**  
 11"x11"x21"  
 4 per case  
**ITEM #: 04094**

**TAPERED SQUARE (SLATE)**  
 11"x11"x21"  
 4 per case  
**ITEM #: 04096**

Items on these two pages ship on a pallet.



**TAPERED CYLINDER (AVOCADO)**

10"x10"x12"  
13½"x13½"x16"  
17"x17"x18½"  
3 pieces per set  
ITEM #: 04109



**DIAMOND PLANTER**

12"x12"x12½"  
16"x16"x16"  
20"x20"x19½"  
3 pieces per set  
ITEM #: 04121

**TEXTURED CLASSIC PLANTER**

10¾"x13"  
14½"x16¾"  
18"x22"  
Set of 3  
ITEM #: 04151

**RIPPLED CLASSIC PLANTER**

11¼"x12½"  
13¾"x16¾"  
18"x22¼"  
Set of 3  
ITEM #: 04159



**HONEYCOMB TAPERED**

7½"x7½"x7"  
10"x10"x9½"  
15"x15"x12½"  
19½"x19½"x17"  
4 pieces per set  
ITEM #: 04129



**TAPERED RAINDROP**

9"x9"x12½"  
12½"x12½"x16½"  
17"x17"x22"  
3 pieces per set  
ITEM #: 04134

**ROUND SCRIBED PLANTER**

10½"x10½"x5"  
15½"x15½"x8"  
19½"x19½"x9"  
3 pieces per set  
ITEM #: 04138



**HONEYCOMB TALL UPRIGHT**

9"x9"x18"  
12"x12"x24½"  
16½"x16½"x30½"  
3 pieces per set  
ITEM #: 04113

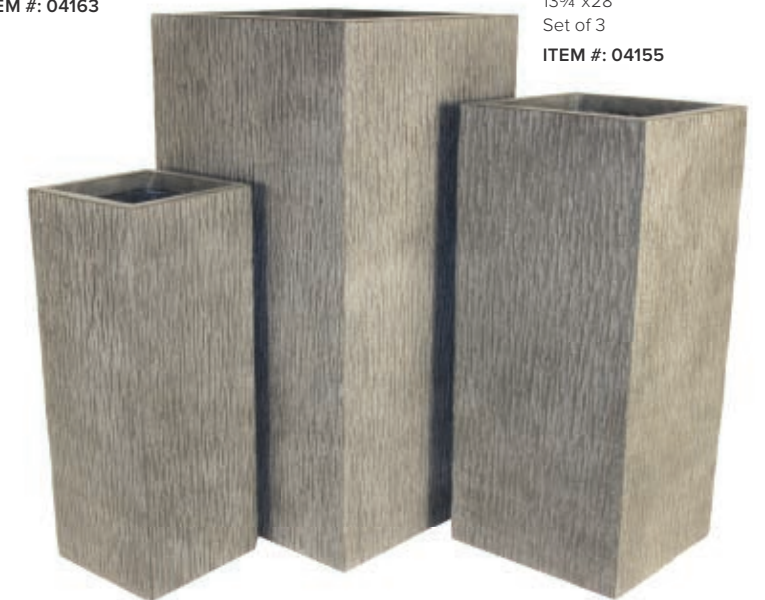


**LINEAR TWO TONE PLANTER**

12¼"x12¼"  
14¾"x14¾"  
17"x17"  
Set of 3  
ITEM #: 04163

**TEXTURED UPRIGHT PLANTER**

7½"x20"  
10¼"x24"  
13¾"x28"  
Set of 3  
ITEM #: 04155



**TREE TRUNK PLANTER**

19½"x19½"  
16"x16"  
13"x12"  
10½"x10"  
4 pieces per set  
ITEM #: 04146

# Pottery Studio Collection

Harking back to hand-thrown masterpieces, this artful array ups the interest with a mixed-media approach incorporating stone, wire, wood and metal.

## CYLINDER PLANTERS

12"x4½"  
15"x6½"  
1 set of 2 per case  
ITEM #: 00412



## DISH PLANTERS

6"x2" 24 per case  
ITEM #: 00413  
8"x3" 12 per case  
ITEM #: 00414  
10"x3" 8 per case  
ITEM #: 00415



## SET OF 4 ENGLISH POTS

4½"x4½"  
6"x6"  
8"x8"  
10"x10"  
2 sets of 4 per case  
ITEM #: 00411



## ENGLISH POT WITH ANTIQUE CRATE

5½"x6"  
1 crate with 12 pots  
ITEM #: 00418



## DOUBLE ENGLISH POT WITH WIRE HOLDER

5½"x6"  
3 sets per case  
ITEM #: 00417



## AGED SINGLE ENGLISH POT

5½"x6"  
12 per case  
ITEM #: 00419



## SINGLE ENGLISH POT WITH WIRE HOLDER

5½"x6"  
6 per case  
ITEM #: 00416



## SQUARE TALL VASE

5"x5"  
7"x7"  
8½"x9"  
2 sets of 3 per case  
ITEM #: 00425

## OLD ENGLISH GARDEN (3 PIECE)

13"x9"  
(Pot size 5"x4")  
4 per case  
ITEM #: 00447



## ENGLISH BOWL SMALL

6"x2½"  
18 per case  
ITEM #: 00426



## ENGLISH BOWL MEDIUM

8"x3"  
12 per case  
ITEM #: 00427



## ENGLISH BOWL LARGE

10"x3½"  
4 per case  
ITEM #: 00428



## HERB CARRIER WITH 3 POTS

16"x16½"x10½"  
2 sets per case  
ITEM #: 00446



## SPOOL & SHEARS

200 Ft of Twine  
5"x5" 1 set  
6 sets per case  
ITEM #: 07059



## VECTOR

5"x5"x4½"  
12 per case  
ITEM #: 00429

## DAYDREAMER

5"x5"x4½"  
12 per case  
ITEM #: 00430

## ROYAL GARDEN

5"x5"x4½"  
12 per case  
ITEM #: 00431

## EVENING STROLL

5"x5"x4½"  
12 per case  
ITEM #: 00432

## MINT RUSH

5"x5"x4½"  
12 per case  
ITEM #: 00433

# Pottery Studio Plus

**Collection** With a touch of moss and a slight rustic edge, this collection cleverly infuses industrial-modern chic into once-ordinary, rough brick.

**RUSTIC DISHGARDEN MEDIUM**  
8"x3"  
12 per case  
ITEM #: 00453



**RUSTIC DISHGARDEN LARGE**  
10"x3"  
8 per case  
ITEM #: 00454



**WELLINGTON CACHEPOTS**  
4"x5"  
5"x5½"  
6½"x6½"  
6 sets of 3 per case  
ITEM #: 00450



**SIGNATURE CACHEPOTS**  
5"x4"  
6½"x5"  
6 sets of 2 per case  
ITEM #: 00451



**BARRINGTON CACHEPOT**  
5½"x5"  
12 per case  
ITEM #: 00452



**TILTED CLAY MEDIUM**  
15" x 14"  
12 per case  
ITEM #: 00456

**NEW**



**TILTED CLAY SMALL**  
12" x 11 1/2"  
24 per case  
ITEM #: 00455

**NEW**



**TILTED CLAY PLANTER**  
14 1/2" x 4"  
36 per case  
ITEM #: 00457

**NEW**

# Moon Glaze Collection

Inspired by the minimally-beautiful lunar landscape, each piece in the Moon Glaze collection is unconventional, yet stunning. Grainy and rugged textures glazed on each ceramic pot complement the softer tones of many plants.



**BLUE CLUSTER POT**  
6¼"x6¼"x6"  
8"x8"x8"  
9¾"x9¾"x10¼"  
1 set of 3 per case  
ITEM #: 30107



**BLUE CLUSTER URNS**  
6¾"x6¾"x6¾"  
10"x10"x9"  
13¾"x13¾"x12¼"  
1 set of 3 per case  
ITEM #: 30100



**BLUE CLUSTER BOWLS**  
12¾"x12¾"x4¾"  
15½"x15½"x5¾"  
1 set of 2 per case  
ITEM #: 30104



**TUSCAN GLAZE POT**  
6¼"x6¼"x6"  
8"x8"x8"  
9¾"x9¾"x10¼"  
1 set of 3 per case  
ITEM #: 30118



**BLACK GALAXY POT**  
6¼"x6¼"x6"  
8"x8"x8"  
9¾"x9¾"x10¼"  
1 set of 3 per case  
ITEM #: 30129



**BLACK GALAXY URNS**  
6¾"x6¾"x6¾"  
10"x10"x9"  
13¾"x13¾"x12¼"  
1 set of 3 per case  
ITEM #: 30122



**BLACK GALAXY BOWLS**  
12¾"x12¾"x4¾"  
15½"x15½"x5¾"  
1 set of 2 per case  
ITEM #: 30126



**TUSCAN GLAZE URN**  
6¾"x6¾"x6¾"  
10"x10"x9"  
13¾"x13¾"x12¼"  
1 set of 3 per case  
ITEM #: 30111



**TUSCAN GLAZE BOWLS**  
12¾"x12¾"x4¾"  
15½"x15½"x5¾"  
1 set of 2 per case  
ITEM #: 30115

Items on this page ship on a pallet.

# Tapestry Collection

These ceramic planters are glazed with exotic prints, bringing to mind the textile art of ages past. Bright colors and bold patterns make each piece an attention-getting showstopper.



**NEW**  
**BLUE SKY**  
3" x 3"  
24 per case  
ITEM# 08212



**NEW**  
**NAMASTE BLUE**  
6" x 5 1/2"  
24 per case  
ITEM# 08209



**NEW**  
**MATTE MIST (LARGE)**  
4 1/2" x 4"  
24 per case  
ITEM# 08215



**NEW**  
**BLUE WING**  
3" x 3"  
24 per case  
ITEM# 08211



**NEW**  
**BLUE PASSION WATER**  
4 1/2" x 6" x 3"  
24 per case  
ITEM# 08217



**NEW**  
**LONGWOOD**  
3" x 3"  
24 per case  
ITEM# 08214



**NEW**  
**BOHEMIAN BLUE STAR**  
4 1/2" x 4"  
24 per case  
ITEM# 08210



**NEW**  
**MATTE MIST (SMALL)**  
3" x 2 1/2"  
24 per case  
ITEM# 08216



**NEW**  
**SEA GREEN FOREST**  
24 per case  
3" x 3"  
ITEM# 08213



**BLAZING FIRE RIM PLANTER**  
4 3/4" x 4 3/4"  
24 per case  
ITEM #: 08200



**BLACK EARTH CYLINDER PLANTER**  
4" x 3 3/4"  
24 per case  
ITEM #: 08204



**BLAZING FIRE CYLINDER PLANTER**  
4" x 3 3/4"  
24 per case  
ITEM #: 08205



**BLUE SUN RIM PLANTER**  
4 3/4" x 4 3/4"  
24 per case  
ITEM #: 08201



**BLAZING FIRE CUBE PLANTER**  
3" x 3"  
24 per case  
ITEM #: 08207



**BLUE SUN CYLINDER PLANTER**  
4" x 3 3/4"  
24 per case  
ITEM #: 08203



**BLACK EARTH RIM PLANTER**  
4 3/4" x 4 3/4"  
24 per case  
ITEM #: 08202



**BLUE SUN CUBE PLANTER**  
3" x 3"  
24 per case  
ITEM #: 08206



**BLACK EARTH CUBE PLANTER**  
3" x 3"  
24 per case  
ITEM #: 08208

# Hanging Baskets

With strong swivel and chain hangers a range of styles and finishes, encourage your customers to discover this unique way to display their plants.





# Seagrass Collection

Waves of tones and textures artlessly fall over these woven seagrass creations. Built on galvanized frames for enhanced durability. Baskets include stiff, swivel-chain hangers.

**WINDOW BASKET**

20" Case pack 12  
**ITEM #: 26204**  
 24" Case pack 12  
**ITEM #: 26205**  
 30" Case pack 12  
**ITEM #: 26206**



**FLAT BOTTOM BASKET**

14" Case pack 20  
**ITEM #: 26202**  
 16" Case pack 20  
**ITEM #: 26203**



**CONE BASKET**

12" Case pack 20  
**ITEM #: 26200**  
 14" Case pack 20  
**ITEM #: 26201**



# Algarve Collection

Portugal's glorious beachside resorts inspired this collection, created through the effortless union of strong metal lines and woven rattan accents. Made with heavy-gauge, epoxy-coated and weather-resistant black steel. Includes pre-inserted, pre-formed coco liner.

**WINDOW HAYRACK**

24" Case pack 12  
**ITEM #: 70304**  
 30" Case pack 12  
**ITEM #: 20304**  
 36" Case pack 12  
**ITEM #: 90304**



# Adirondack Collection

A new twist on a newer shape, these textural, nature-inspired containers bring twisted seagrass together in a true fusion of style and durability. Complete with a stiff, swivel-chain hanger.

**CONE BASKET**

12" Case pack 20  
**ITEM #: 26300**  
 14" Case pack 20  
**ITEM #: 26301**



**FLAT BOTTOM BASKET**

14" Case pack 20  
**ITEM #: 26302**  
 16" Case pack 20  
**ITEM #: 26303**



# Cayman Collection

Bringing new life to an already decorative item, these banana-leaf baskets are sure to add texture to your creations. Complete with a stiff, swivel-chain hanger.

**FLAT BOTTOM BASKET**

14" Case pack 20  
**ITEM #: 26221**  
 16" Case pack 20  
**ITEM #: 26222**

**CONE BASKET**

12" Case pack 20  
**ITEM #: 26218**  
 14" Case pack 20  
**ITEM #: 26219**



# Beehive Collection

All the world's abuzz over this collection's swirling metal curves and sweeping, open designs. Choose coco or mossmat liner.

**MOSSMAT HANGING BASKET**

- 12" Case pack 5  
ITEM #: 27313
- 14" Case pack 5  
ITEM #: 37313
- 16" Case pack 5  
ITEM #: 47313



**COCO LINER HANGING BASKET**

- 12" Case pack 5  
ITEM #: 27314
- 14" Case pack 5  
ITEM #: 37314
- 16" Case pack 5  
ITEM #: 47314



# Grapevine Collection

You heard it here first — these baskets epitomize rustic elegance with their clever grapevine designs. With plastic liner and stiff, swivel-chain hanger.

**CONE BASKET**

- 12" Case pack 20  
ITEM #: 46202
- 14" Case pack 20  
ITEM #: 46203



**FLAT BOTTOM BASKET**

- 14" Case pack 20  
ITEM #: 46200
- 16" Case pack 20  
ITEM #: 46201



# Leaf Collection

An artistic marriage of natural leaves and rattan, this collection seamlessly transitions from summer to fall with light, earthy hues and durable, galvanized frames. Plastic insert and stiff, swivel-hanger included.

Texture speaks to the power of nature.

**CONE BASKET**

- 12" Case pack 20  
ITEM #: 26512
- 14" Case pack 20  
ITEM #: 36512
- 16" Case pack 20  
ITEM #: 46512



**FLAT BOTTOM BASKET**

- 12" Case pack 20  
ITEM #: 21512
- 14" Case pack 20  
ITEM #: 31512
- 16" Case pack 20  
ITEM #: 41512

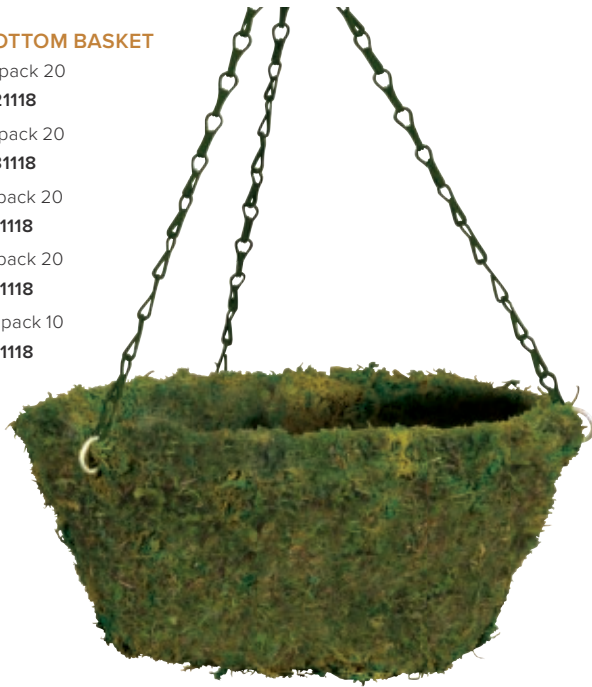


# Evergreen Moss Collection

Sphagnum moss is applied to the outside of a galvanized wire frame for strength and durability.

**FLAT BOTTOM BASKET**

- 12" Case pack 20  
**ITEM #: 21118**
- 14" Case pack 20  
**ITEM #: 31118**
- 16" Case pack 20  
**ITEM #: 41118**
- 18" Case pack 20  
**ITEM #: 51118**
- 20" Case pack 10  
**ITEM #: 61118**



three shapes and multiple sizes, long lasting and reusable. Complete with stiff swivel chain hanger.



**CONE BASKET**

- 12" Case pack 20  
**ITEM #: 26118**
- 14" Case pack 20  
**ITEM #: 36118**
- 16" Case pack 20  
**ITEM #: 46118**



**URN WITH MOSSMAT**

- 18"x22" Case pack 3  
**ITEM #: 02333**

Also available with Coco Liner

**NEW**

**MOSS OVAL BASKET (L)**

- 11" x 12" x 6"
- 12 per case
- ITEM #: 26120**

**NEW**

**MOSS OVAL BASKET (S)**

- 9" x 10" x 5 1/2"
- 12 per case
- ITEM #: 26121**



# Panama Collection

These handwoven hanging baskets are showstoppers; attractive and extremely durable. Complete with a stiff swivel chain hanger and plastic lined.



**NEW**

- CONE BASKET**
- 12" Case pack 20
- ITEM #: 26400**



**NEW**

- FLAT BOTTOM BASKET**
- 14" Case pack 20
- ITEM #: 26403**



**NEW**

- CONE BASKET**
- 12" Case pack 20
- ITEM #: 26401**



**NEW**

- CONE BASKET**
- 12" Case pack 20
- ITEM #: 26402**



**NEW**

- FLAT BOTTOM BASKET**
- 14" Case pack 20
- ITEM #: 26404**

**NEW**

- FLAT BOTTOM BASKET**
- 14" Case pack 20
- ITEM #: 26405**



# Woodland Moss Baskets

## READY-TO-PLANT WOODLAND MOSS HANGING BASKET WITH CHAIN HANGER

### CHAIN HANGER, GALVANIZED

12" Case pack 10  
ITEM#: 21111

14" Case pack 10  
ITEM#: 31111

16" Case pack 10  
ITEM#: 41111

18"/3 loop  
Case pack 10  
ITEM#: 51111

20" Case pack 10  
ITEM#: 61111

24" Case pack 5  
ITEM#: 71111

28" Case pack 3  
ITEM#: 81111

36" Case pack 2  
ITEM#: 91111

### CHAIN HANGER, GREEN

12" Case pack 10  
ITEM#: 21211

14" Case pack 10  
ITEM#: 31211

16" Case pack 10  
ITEM#: 41211

18"/3 loop  
Case pack 10  
ITEM#: 51211

20" Case pack 10  
ITEM#: 61211

24" Case pack 5  
ITEM#: 71211

28" Case pack 3  
ITEM#: 81211

### CHAIN HANGER, BLACK

12" Case pack 10  
ITEM#: 21311

14" Case pack 10  
ITEM#: 31311

16" Case pack 10  
ITEM#: 41311

18"/3 loop  
Case pack 10  
ITEM#: 51311

20" Case pack 10  
ITEM#: 61311

24" Case pack 5  
ITEM#: 71311

28" Case pack 3  
ITEM#: 81311



GALVANIZED HANGING BASKET WITH CHAIN HANGER



GREEN HANGING BASKET WITH CHAIN HANGER

## READY-TO-PLANT WOODLAND MOSS HANGING BASKET WITH WIRE HANGER (NOT PICTURED)

### WIRE HANGER, GALVANIZED

12" Case pack 10  
ITEM#: 21121

14" Case pack 10  
ITEM#: 31121

16" Case pack 10  
ITEM#: 41121

18"/3 loop, Case pack 10  
ITEM#: 51121

# Belize Collection

Inspired by the cotton fields of Belize, these cotton shell baskets are the perfect accent piece for those rustic outdoor spaces. The rough texture and multi-coloured cotton shells is stylish, durable and weather-resistant.

14" FLAT BOTTOM BASKET  
20 per case  
ITEM #: 27000

16" FLAT BOTTOM BASKET  
20 per case  
ITEM #: 27001

12" CONE BASKET  
20 per case  
ITEM #: 27002

14" CONE BASKET  
20 per case  
ITEM #: 27003



# Grower's Essentials

Anything but ordinary, these workhorse wire baskets are epoxy-coated with ultraviolet protection and rust inhibitors. an unbeatable array of colors, shapes, sizes, hangers and liners to suit any need.

## MOSSMAT GROWER HANGING BASKET

### WIRE HANGER, GREEN

12" Case pack 30  
ITEM#: 28223  
14" Case pack 30  
ITEM#: 38223  
16" Case pack 30  
ITEM#: 48223

### CHAIN HANGER, GREEN

12" Case pack 30  
ITEM#: 28213  
14" Case pack 30  
ITEM#: 38213  
16" Case pack 30  
ITEM#: 48213

MOSSMAT GROWER HANGING BASKET



## COCO LINER GROWER HANGING BASKET

### WIRE HANGER, GREEN

12" Case pack 30  
ITEM#: 28224  
14" Case pack 30  
ITEM#: 38224  
16" Case pack 30  
ITEM#: 48224

### CHAIN HANGER, GREEN

12" Case pack 30  
ITEM#: 28214  
14" Case pack 30  
ITEM#: 38214  
16" Case pack 30  
ITEM#: 48214

COCO LINER GROWER HANGING BASKET



## MOISTURE MAT GROWER HANGING BASKET

### WIRE HANGER, GREEN

12" Case pack 30  
ITEM#: 28225  
14" Case pack 30  
ITEM#: 38225  
16" Case pack 30  
ITEM#: 48225

### CHAIN HANGER, GREEN

12" Case pack 30  
ITEM#: 28215  
14" Case pack 30  
ITEM#: 38215  
16" Case pack 30  
ITEM#: 48215

MOISTURE MAT GROWER HANGING BASKET



## MOSSMAT HANGING BASKET

### CHAIN HANGER, GALVANIZED

12" Case pack 10  
ITEM#: 21113  
14" Case pack 10  
ITEM#: 31113  
16" Case pack 10  
ITEM#: 41113  
18" 2/3 loop, Case pack 10  
ITEM#: 51113  
20" Case pack 10  
ITEM#: 61113  
24" Case pack 5  
ITEM#: 71113  
28" Case pack 3  
ITEM#: 81113  
36" Case pack 2  
ITEM#: 91113

### CHAIN HANGER, GREEN

12" Case pack 10  
ITEM#: 21213  
14" Case pack 10  
ITEM#: 31213  
16" Case pack 10  
ITEM#: 41213  
18" 2/3 loop, Case pack 10  
ITEM#: 51213  
20" Case pack 10  
ITEM#: 61213  
24" Case pack 5  
ITEM#: 71213  
28" Case pack 3  
ITEM#: 81213

### CHAIN HANGER, BLACK

12" Case pack 10  
ITEM#: 21313  
14" Case pack 10  
ITEM#: 31313  
16" Case pack 10  
ITEM#: 41313  
18" 2/3 loop, Case pack 10  
ITEM#: 51313  
20" Case pack 10  
ITEM#: 61313  
24" Case pack 5  
ITEM#: 71313  
28" Case pack 3  
ITEM#: 81313

### WIRE HANGER, GALVANIZED

12" Case pack 10  
ITEM #:21123  
14" Case pack 10  
ITEM #:31123  
16" Case pack 10  
ITEM #:41123  
18" 2/3 loop, Case pack 10  
ITEM #:51123

MOSSMAT HANGING BASKET



## COCO LINER HANGING BASKET

### CHAIN HANGER, GALVANIZED

12" Case pack 10  
ITEM#: 21114  
14" Case pack 10  
ITEM#: 31114  
16" Case pack 10  
ITEM#: 41114  
18" 2/3 loop, Case pack 10  
ITEM#: 51114  
20" Case pack 10  
ITEM#: 61114  
24" Case pack 5  
ITEM#: 71114  
28" Case pack 3  
ITEM#: 81114  
36" Case pack 2  
ITEM#: 91114

### CHAIN HANGER, GREEN

12" Case pack 10  
ITEM#: 21214  
14" Case pack 10  
ITEM#: 31214  
16" Case pack 10  
ITEM#: 41214  
18" 2/3 loop, Case pack 10  
ITEM#: 51214  
20" Case pack 10  
ITEM#: 61214  
24" Case pack 5  
ITEM#: 71214  
28" Case pack 3  
ITEM#: 81214

### CHAIN HANGER, BLACK

12" Case pack 10  
ITEM#: 21314  
14" Case pack 10  
ITEM#: 31314  
16" Case pack 10  
ITEM#: 41314  
18" 2/3 loop, Case pack 10  
ITEM#: 51314  
20" Case pack 10  
ITEM#: 61314  
24" Case pack 5  
ITEM#: 71314  
28" Case pack 3  
ITEM#: 81314

### WIRE HANGER, GALVANIZED

12" Case pack 10  
ITEM#: 21124  
14" Case pack 10  
ITEM#: 31124  
16" Case pack 10  
ITEM#: 41124  
18" 2/3 loop, Case pack 10  
ITEM#: 51124

COCO LINER HANGING BASKET



## MOISTURE MAT HANGING BASKET

### CHAIN HANGER, GALVANIZED

12" Case pack 10  
ITEM#: 21115  
14" Case pack 10  
ITEM#: 31115  
16" Case pack 10  
ITEM#: 41115  
18" 2/3 loop, Case pack 10  
ITEM#: 51115  
20" Case pack 10  
ITEM#: 61115  
24" Case pack 5  
ITEM#: 71115  
28" Case pack 3  
ITEM#: 81115  
36" Case pack 2  
ITEM#: 91115

### CHAIN HANGER, GREEN

12" Case pack 10  
ITEM#: 21215  
14" Case pack 10  
ITEM#: 31215  
16" Case pack 10  
ITEM#: 41215  
18" 2/3 loop, Case pack 10,  
ITEM#: 51215  
20" Case pack 10  
ITEM#: 61215  
24" Case pack 5  
ITEM#: 71215  
28" Case pack 3  
ITEM#: 81215

### CHAIN HANGER, BLACK

12" Case pack 10  
ITEM#: 21315  
14" Case pack 10  
ITEM#: 31315  
16" Case pack 10  
ITEM#: 41315  
18" 2/3 loop Case pack 10  
ITEM#: 51315  
20" Case pack 10  
ITEM#: 61315  
24" Case pack 5  
ITEM#: 71315  
28" Case pack 3  
ITEM#: 81315

### WIRE HANGER, GALVANIZED

12" Case pack 10  
ITEM#: 21125  
14" Case pack 10  
ITEM#: 31125  
16" Case pack 10  
ITEM#: 41125  
18" 2/3 loop, Case pack 10  
ITEM#: 51125

MOISTURE MAT HANGING BASKET





**HOW TO DVD  
(TOPIARY)**  
ITEM #: 22951

# Topiary Collection

# Sculptures

Taking cues from the regal grace found in many formal, English estate gardens, Braun topiary sculptures' unique designs give your customers the freedom to add some substance to their garden, no matter the size.

Our award-winning topiary sculptures are double-epoxied for rust prevention. They're available as wire frame, filled with a lush sphagnum moss, or accented with white lights for the holidays. Choose from over 60 different designs starting at 4" in height.



**AIREDALE**  
32" Mossed  
ITEM #: 22701



**BICHON FRISE**  
19" Mossed  
ITEM #: 22721



**ALLIGATOR**  
9" Frame  
ITEM #: 22704  
9" Mossed  
ITEM #: 22705



**BOSTON TERRIER**  
20" Frame  
ITEM #: 22723  
20" Mossed  
ITEM #: 22724  
20" Lit  
ITEM #: 22725



**BEAGLE**  
21" Mossed  
ITEM #: 22717



**BOXER**  
31" Mossed  
ITEM #: 22727



**BASSET HOUND**  
21" Frame  
ITEM #: 22713  
21" Mossed  
ITEM #: 22714  
21" Lit  
ITEM #: 22715



**BULLDOG**  
16" Frame  
ITEM #: 22730  
16" Mossed  
ITEM #: 22731  
16" Lit  
ITEM #: 22732



**BULL TERRIER**  
27" Frame  
ITEM #: 22728  
27" Mossed  
ITEM #: 22729



**BUMBLEBEE**  
6" Mossed  
ITEM #: 22734



**BUTTERFLY**  
20" Mossed  
ITEM #: 22736  
25" Mossed  
ITEM #: 22738



**CAT, LYING**  
10" Mossed  
ITEM #: 22740



**CORGI**  
17" Frame  
ITEM #: 22757  
17" Mossed  
ITEM #: 22758  
17" Lit  
ITEM #: 22759



**CAT, WALKING**  
18" Frame  
ITEM #: 22741  
18" Mossed  
ITEM #: 22742



**CAVALIER, SITTING**  
16" Frame  
ITEM #: 22746  
16" Mossed  
ITEM #: 22747  
16" Lit  
ITEM #: 22748



**CHIHUAHUA**  
16" Mossed  
ITEM #: 22750  
16" Lit  
ITEM #: 22751



**COCKER SPANIEL**  
21" Frame  
ITEM #: 22752  
21" Mossed  
ITEM #: 22753  
21" Lit  
ITEM #: 22754



**COW**  
24" Mossed  
ITEM #: 22756  
60" Mossed  
ITEM #: 22761

**NEW**

**TEDDY BEAR**  
11" Mossed  
ITEM #: 22925



**DACHSHUND**  
13" Frame  
ITEM #: 22762  
13" Mossed  
ITEM #: 22763  
13" Lit  
ITEM #: 22764



**DEER**  
18" Mossed  
ITEM #: 22765  
26" Mossed  
ITEM #: 22766  
52" Frame  
ITEM #: 22767  
52" Mossed  
ITEM #: 22768

**DOE**  
15" Mossed  
ITEM #: 22773  
31" Frame  
ITEM #: 22774  
31" Mossed  
ITEM #: 22775



**DONKEY**  
18" Mossed  
ITEM #: 22780



**DOBERMAN**  
36" Frame  
ITEM #: 22771  
36" Mossed  
ITEM #: 22772



**DOLPHIN**  
33" Mossed  
ITEM #: 22778



**DUCK**  
9" Mossed  
ITEM #: 22783  
19" Mossed  
ITEM #: 22785



**DRAGONFLY**  
8" Mossed  
ITEM #: 22781



**ELEPHANT**  
19" Frame  
ITEM #: 22786  
19" Mossed  
ITEM #: 22787  
32" Mossed  
ITEM #: 22789  
48" Mossed  
ITEM #: 22791  
60" Mossed  
ITEM #: 22793



**HORSE**  
17" Frame  
ITEM #: 22830  
17" Mossed  
ITEM #: 22831  
26" Mossed  
ITEM #: 22833  
37" Mossed  
ITEM #: 22834  
49" Mossed  
ITEM #: 22835  
72" Frame  
ITEM #: 22836  
72" Mossed  
ITEM #: 22837



**MONKEY, HANGING**  
14" Mossed  
ITEM #: 22852  
20" Mossed  
ITEM #: 22854  
30" Mossed  
ITEM #: 22856



**FAWN**  
25" Mossed  
ITEM #: 22796



**GOLDEN RETRIEVER**  
31" Frame  
ITEM #: 22821  
31" Mossed  
ITEM #: 22822



**JACK RUSSELL**  
14" Frame  
ITEM #: 22838  
14" Mossed  
ITEM #: 22839  
14" Lit  
ITEM #: 22840



**MOOSE**  
60" Frame  
ITEM #: 22857  
60" Mossed  
ITEM #: 22858



**FROG**  
4" Mossed  
ITEM #: 22804  
6" Frame  
ITEM #: 22806  
6" Mossed  
ITEM #: 22807  
12" Mossed  
ITEM #: 22810



**GREYHOUND**  
37" Mossed  
ITEM #: 22824



**KITTEN, SITTING**  
9" Frame  
ITEM #: 22841  
9" Mossed  
ITEM #: 22842



**NESSIE**  
24" Mossed  
ITEM #: 22859  
38" Mossed  
ITEM #: 22860



**FOX**  
13" Mossed  
ITEM #: 22801  
18" Mossed  
ITEM #: 22802



**GIRAFFE**  
38" Mossed  
ITEM #: 22816  
73" Mossed  
ITEM #: 22818  
168" Frame  
(Non-stock special order)  
ITEM #: 22819  
168" Mossed  
ITEM #: 22820



**LION**  
25" Mossed  
ITEM #: 22844



**PIG**  
12" Mossed  
ITEM #: 22861  
17" Mossed  
ITEM #: 22862  
25" Mossed  
ITEM #: 22863



**GERMAN SHEPHERD, SITTING**  
36" Frame  
ITEM #: 22813  
36" Mossed  
ITEM #: 22814



**HERON**  
40" Frame  
ITEM #: 22826  
40" Mossed  
ITEM #: 22827  
48" Frame  
ITEM #: 22828  
48" Mossed  
ITEM #: 22829



**MONKEY, FUNKY**  
33" Mossed  
ITEM #: 22850



**POINTER**  
32" Mossed  
ITEM #: 22867





**POODLE, STANDARD**  
 17" Frame  
**ITEM #: 22868**  
 17" Mossed  
**ITEM #: 22869**  
 17" Lit  
**ITEM #: 22870**  
 32.5" Frame  
**ITEM #: 22871**  
 32.5" Mossed  
**ITEM #: 22872**



**RETRIEVER, LABRADOR**  
 30" Frame  
**ITEM #: 22889**  
 30" Mossed  
**ITEM #: 22890**



**SCHNAUZER**  
 18" Frame  
**ITEM #: 22896**  
 18" Mossed  
**ITEM #: 22897**  
 18" Lit  
**ITEM #: 22898**



**TEACUP & SAUCER**  
 6" Mossed  
**ITEM #: 22920**



**PUG**  
 18" Frame  
**ITEM #: 22873**  
 18" Mossed  
**ITEM #: 22874**  
 18" Lit  
**ITEM #: 22875**



**ROOSTER**  
 29" Mossed  
**ITEM #: 22892**



**SCOTTIE**  
 18" Frame  
**ITEM #: 22899**  
 18" Mossed  
**ITEM #: 22900**  
 18" Lit  
**ITEM #: 22901**



**TURTLE**  
 5" Frame  
**ITEM #: 22927**  
 5" Mossed  
**ITEM #: 22928**  
 8" Frame  
**ITEM #: 22931**  
 8" Mossed  
**ITEM #: 22932**  
 12" Mossed  
**ITEM #: 22935**



**RABBIT, HOPPING**  
 13" Frame  
**ITEM #: 22879**  
 13" Mossed  
**ITEM #: 22880**  
 20" Mossed  
**ITEM #: 22882**



**ROOSTER, METAL**  
 28" Mossed  
**ITEM #: 22893**



**SQUIRREL**  
 12" Mossed  
**ITEM #: 22913**  
 18" Mossed  
**ITEM #: 22915**



**WESTIE**  
 14" Frame  
**ITEM #: 22943**  
 14" Mossed  
**ITEM #: 22944**  
 14" Lit  
**ITEM #: 22945**



**RABBIT, SITTING UPRIGHT**  
 13" Mossed  
**ITEM #: 22884**  
 21" Frame  
**ITEM #: 22885**  
 21" Mossed  
**ITEM #: 22886**  
 34" Frame  
**ITEM #: 22887**  
 34" Mossed  
**ITEM #: 22888**



**SEAHORSE**  
 24" Mossed  
**ITEM #: 22903**



**SWAN**  
 24" Mossed  
**ITEM #: 22917**



**YORKIE**  
 15" Frame  
**ITEM #: 22946**  
 15" Mossed  
**ITEM #: 22947**  
 15" Lit  
**ITEM #: 22948**



**SNAIL**  
 6" Mossed  
**ITEM #: 22910**



**TEAPOT**  
 8" Mossed  
**ITEM #: 22922**  
 13" Mossed  
**ITEM #: 22924**



Items on this page ship on a pallet.

# Artisan Collection

This versatile collection offers simple elegance to any home setting. Whether it's indoors or out this collection has a bit of everything to capture gardeners and home decorators alike.

### HARVICK CARRIAGE

20½"x8½"x8½"  
15½"x6"x6"  
1 set per case  
ITEM #: 02395



### PARK LANE WINDOWPANE

20"x17"x6"  
10"x7½"x4"  
10"x7½"x4"  
1 set per case  
ITEM #: 02393



### LYNDEN LANTERN

20"x14¼"x5"  
12"x7½"x4"  
1 set per case  
ITEM #: 02396



### BRISTOL GREY LANTERN

24"x7¾"x7¾"  
16"x6"x6"  
1 set per case  
ITEM #: 02394



### CHARLESTON SQUARE

18½"x11"x11"  
12½"x7½"x7½"  
2 sets per case  
ITEM #: 02397



### CONCORD CIRCLE

21"x10"x10"  
13½"x6½"x6½"  
2 sets per case  
ITEM #: 02398



### UXBRIDGE CROSS

22"x9"x9"  
15½"x6½"x6½"  
2 sets per case  
ITEM #: 02399



# Eclectic Garden Boutique

High fashion and home garden seamlessly meld in this collection of garden accessories made for cross-selling.

### COACH LANTERNS

12"x42"  
9"x33"  
7"x22"  
Set of 3

ITEM #: 07999



### RENAISSANCE FIRE GLOBE SMALL

6"x5"  
8 per case  
ITEM #: 07052



### MINI WHITE LANTERN WITH TRAY

Tray size 9"x9"  
6 sets per case  
ITEM #: 02448



### MINI RED LANTERN WITH TRAY

Tray size 9"x9"  
6 sets per case  
ITEM #: 02449



### MINI RED LANTERN

2½"x4½" 12 per case  
ITEM #: 02446



### MINI WHITE LANTERN

2½"x4½" 12 per case  
ITEM #: 02447



# Wicker

Lightweight yet sturdy, handwoven wicker is equally at home inside or outside — and an excellent canvas for any planting arrangement.

## Artisan Collection

This versatile collection offers simple elegance to any home setting. Whether it's indoors or out this collection has a bit of everything to capture gardeners and home decorators alike. Each includes a plastic liner.

**WICKER SCOOP BASKET 17"**  
17"x8¾"x10½"  
12 per case  
ITEM #: 02453



**WICKER RING PLANTER 10"**  
10"x3"x10"  
12 per case  
ITEM #: 02420



**WICKER RING PLANTER 12"**  
11½"x4½"x12"  
12 per case  
ITEM #: 02421

**WICKER CANOE SMALL**  
21½"x3½"x4"  
12 per case  
ITEM #: 02414



**WICKER CANOE LARGE**  
24"x5"x4½"  
12 per case  
ITEM #: 02415



**WICKER FLOWER BASKET 10"**  
10"x6½"x11"  
12 per case  
ITEM #: 02411



**WICKER FLOWER BASKET 12"**  
12"x7"x12"  
12 per case  
ITEM #: 02412



**WICKER FLOWER BASKET 14"**  
14"x9"x17"  
12 per case  
ITEM #: 02413



**WICKER TOTE**  
11"x4"x11"  
12 per case  
ITEM #: 02418



**WICKER PURSE**  
7½"x4"x9½"  
12 per case  
ITEM #: 02417



**WICKER HAND BAG**  
8"x5"x12"  
12 per case  
ITEM #: 02419

**WICKER TEAR DROP**  
Wicker Tear Drop 12"  
9"x4"x12"  
12 per case  
ITEM #: 02422



**WICKER WREATH 15"**  
15"x15"x5"  
8 per case  
ITEM #: 02425

Wicker Tear Drop 15"  
11"x5"x15"  
12 per case  
ITEM #: 02423



**WICKER WREATH 12"**  
12"x12"x4"  
12 per case  
ITEM #: 02424



**WICKER SCOOP BASKET 12"**  
12"x6½"x8½"  
12 per case  
ITEM #: 02452



# Terrariums

Beautiful and practical, terrariums seal light, heat and moisture in while keeping damaging elements out.



# Eclectic Garden Boutique

High fashion and home garden seamlessly meld in this collection of garden accessories made for cross-selling.



**HURRICANE TERRARIUM**  
10"x12½"  
2 per case  
ITEM #: 07067



**MINI GLASSHOUSES**  
12"x8"x13"  
8½"x5½"x9"  
Set of 2  
ITEM #: 07047



**MINI EDWARDIAN CONSERVATORY (WITH STANDS)**  
19"x13"x33"  
14½"x10"x25"  
Set of 2  
ITEM #: 07058



**DOMED TERRARIUMS**  
6"x6"  
8"x8"  
10"x10"  
Set of 3  
3 sets per case  
ITEM #: 07057

# Merchandisers

Inspire your customers with shelving and display units that recall the eclectic yet charming decor found on farms and countryside homes.



Items ship on a pallet

# Inspiration Gallery



**HANGING BASKET RACK**

36" X 102"  
Signage included.  
6 circle brackets for hanging baskets.  
Fits 12", 14" and 16".  
3 brackets for hay rack baskets.  
Fits 16"-36".  
4 brackets for chains or mannequin combos.  
Assembly necessary.

ITEM #: 00100



**RUSTIC BAKER'S RACK**

Overall: 33"x16"x73"  
Shelves: Top 2, 31"x13"  
Bottom 2, 31"x16"  
Distance between shelves:  
17", 21", 23"  
Signage included.  
No assembly necessary.  
Folds flat.

ITEM #: 00104



**MINI WHEELBARROW**

33"x14"x13"  
Light assembly necessary.  
3 per case.

ITEM #: 00120



**AGED INDUSTRIAL WALL SHELF SYSTEM**

48"x13"x79"  
ITEM #: 00130



**NEW**

**RECLAIMED RISERS PRODUCT**

15 1/2" x 9 1/2" x 6 1/2"  
19 1/2" x 11" x 6 1/2"  
23 1/2" x 12 1/2" x 7 1/2"  
2 sets of 3 per case

ITEM #: 00146



**AGED INDUSTRIAL TWO-TIER SHELF SYSTEM**

77"x16"x32"  
ITEM #: 00111

**NEW**

**GRADUATED STACKING SHELF  
WHITE WASH**

Overall: 65½"x62"  
65½"x17"x15¾"  
60"x16½"x13¾"  
54¼"x15¾"x11¾"  
49"x15¼"x9¾"  
43½"x14¾"x7¾"  
No assembly necessary.  
Each shelf nests inside  
one another.  
**ITEM #: 00098**



**GRADUATED STACKING SHELF**

Overall: 65½"x62"  
65½"x17"x15¾"  
60"x16½"x13¾"  
54¼"x15¾"x11¾"  
49"x15¼"x9¾"  
43½"x14¾"x7¾"  
No assembly necessary.  
Each shelf nests inside  
one another.  
**ITEM #: 00101**

Items ship on a pallet



**VINTAGE FOUR-DRAWER WALL SHELF**  
18"x8"x13"  
1 per case  
**ITEM #: 00142**



**VINTAGE FOUR-DRAWER SHELF WITH HOOKS**  
24"x8"x12"  
1 per case  
**ITEM #: 00143**



**METAL CASCADING WATERFALL TABLES**  
14"x14"x17"  
21"x21"x23"  
27"x27"x31"  
34"x34"x38"  
**ITEM #: 00113**



**SANDWICH CHALKBOARD**  
39¾"x19"  
Case pack 2  
**ITEM #: 00116**



**THREE-TIER LADDER SHELF**  
30"x17"x44"  
No assembly necessary.  
Folds flat.  
**ITEM #: 00105**



**VINTAGE RECTANGULAR WALL SHELF**  
25"x8"x7½"  
1 per case  
**ITEM #: 00141**



**VINTAGE FOUR-DRAWER TABLE TOP DISPLAY**  
16"x6½"x14"  
1 per case  
**ITEM #: 00144**

**THREE-TIER PUSH CART**  
36"x10¾"x34¾"  
1 per case  
**ITEM #: 00138**



**THREE-TIER SHELF SYSTEM**  
32½"x12½"x66¾"  
1 per case  
**ITEM #: 00136**



**FOUR-TIER SHELF SYSTEM**  
16¼"x16¼"x64¾"  
1 per case  
**ITEM #: 00137**

**METAL THREE-TIER STACKING TABLES**  
21"x19"x21"  
21"x31"x26"  
24"x43"x33"  
**ITEM #: 00103**



**VINTAGE WINE CART**  
35"x17"x33½"  
**ITEM #: 00145**

# Accessories

Keep your products retail-ready with garden product accessories from Braun. Whether it's chains for hanging baskets, pre-cut liners or root-enhancing Mother Nurture, having these accessories on-hand is essential for the savvy retailer.



# Woodland Moss Collection

Have you met "Mossie"? If not you have to put this on the must have list. Our woodland moss is conveniently retail ready packages.



**EVERGREEN MOSS**  
5.5 cu. ft. bale  
Case pack 1  
ITEM #: 00708



**MOSS GREEN SPRAY**  
Revives tired looking moss.  
4L  
1 per case  
ITEM #: 00012



**NATURALLY BEAUTIFUL MOSS GREEN SPRAY**  
Revives tired looking moss.  
16.9oz. / 500 ml  
Case pack 6  
ITEM #: 00011



**EASY COCO**  
820 cu. in.  
Case pack 6  
ITEM #: 00004



**WOODLAND MOSS**  
512 cu. in. mini bale  
Case pack 12  
ITEM #: 00003



**WOODLAND MOSS**  
410 cu. in. bag  
Case pack 12  
ITEM #: 00001



**WOODLAND MOSS**  
820 cu. in. bag  
Case pack 6  
ITEM #: 00002



**WOODLAND MOSS**  
2 cu. ft. bag  
Case pack 5  
ITEM #: 00008



**WOODLAND MOSS**  
3.25 cu. ft. bale  
Case pack 1  
ITEM #: 00000



# Wreaths, Succulent Art & Chains

Looking for additional planting canvas?  
Check out our Succulent Art selection and  
make your customers come back for more.  
Ready to plant, our living wreaths feature a  
sturdy wire base wrapped around a soil tube  
and finished with natural moss.



**MOSS SPHERES**  
6" 12 per case  
ITEM #: 00516  
8" 8 per case  
ITEM #: 00517  
10" 4 per case  
ITEM #: 00518



**SUCCULENT CLOCK LARGE**  
27"x22¾"x1"  
Case of 6  
ITEM #: 00520



**SQUARE SUCCULENT WREATH**  
12"x12"x3"  
10 per case  
ITEM #: 00522  
16"x16"x3"  
10 per case  
ITEM #: 00523



**SUCCULENT CLOCK SMALL**  
22"x16¼"x1½"  
Case of 6  
ITEM #: 00521

**LIVING WREATH**  
16" Case pack 10  
ITEM #: 47500  
20" Case pack 10  
ITEM #: 67500  
24" Case pack 5  
ITEM #: 77500

**RETAIL READY LIVING WREATH**  
16" Case pack 10  
ITEM #: 49500



**SUCCULENT WREATH**  
16" Case pack 10  
ITEM #: 49502



**SUCCULENT WREATH**  
12" Case pack 10  
ITEM #: 49501



**TURQUOISE RECTANGULAR MOSS FRAME**  
9½"x7½"x2½" 12 per case  
ITEM #: 00526



**ANTIQUE ROSE RECTANGULAR MOSS FRAME**  
8"x6"x2½" 12 per case  
ITEM #: 00528



**ANTIQUE WHITE SQUARE MOSS FRAME**  
10"x10"x2" 12 per case  
ITEM #: 00527



**SUCCULENT WINDOW SHUTTER**  
15"x28"  
2 per case  
ITEM #: 00524



**SUCCULENT MOSS FRAME**  
18"x18"x1"  
6 per case  
ITEM #: 00519



**MIRRORED WINDOW SHUTTER**  
19"x1½"x28"  
2 per case  
ITEM #: 00525



**BLACK STIFF CHAIN SWIVEL HANGERS**  
Size 22"  
Case pack 10  
ITEM#: 51350

**GALVANIZED STIFF WIRE SWIVEL HANGERS**  
Size 22"  
Case pack 10  
ITEM#: 51353

**GREEN STIFF CHAIN SWIVEL HANGERS**  
Size 22"  
Case pack 10  
ITEM#: 51352

**GREEN STIFF WIRE SWIVEL HANGERS**  
Size 22"  
Case pack 10  
ITEM#: 51354

**BLACK PLASTIC SWIVEL HANGER**  
Size 22"  
20 per Case  
ITEM#: 51355



## HANGING BASKET CHAINS

Galvanized steel chains are individually packaged and a variety of finishes to match most hanging baskets.



**GALVANIZED**  
16" Case pack 10  
Basket size: 10", 12", 14"  
ITEM#: 49110  
20" Case pack 10  
Basket size: 16", 18"  
ITEM#: 69110  
22" Case pack 10  
Basket size: 20"  
ITEM#: 09110  
30" Case pack 5  
Basket size: 24", 28"  
ITEM#: 29110

**IRIDESCENT**  
16" Case pack 10  
Basket size: 10", 12", 14"  
ITEM#: 49210  
20" Case pack 10  
Basket size: 16", 18"  
ITEM#: 69210  
22" Case pack 10  
Basket size: 20"  
ITEM#: 09210  
30" Case pack 5  
Basket size: 24", 28"  
ITEM#: 29210

**BLACK**  
16" Case pack 10  
Basket size: 10", 12", 14"  
ITEM#: 49310  
20" Case pack 10  
Basket size: 16", 18"  
ITEM#: 69310  
22" Case pack 10  
Basket size: 20"  
ITEM#: 09310  
30" Case pack 5  
Basket size: 24", 28"  
ITEM#: 29310

# Braun Liners

Designed with your bottom line in mind, our natural fiber liners won't fade or discolor, delivering exceptional moisture retention and offering superior insulation. Choose from Moisture Mat, Mossmat and Coco Liners in a range of pre-formed sizes and convenient rolls for custom cutting.



## RETAIL-READY, PRE-CUT LINERS

| MOSSMAT                          | COCO LINER                       | MOISTURE MAT                     |
|----------------------------------|----------------------------------|----------------------------------|
| 12" Case pack 10<br>ITEM#: 29503 | 12" Case pack 10<br>ITEM#: 29504 | 12" Case pack 10<br>ITEM#: 29505 |
| 14" Case pack 10<br>ITEM#: 39503 | 14" Case pack 10<br>ITEM#: 39504 | 14" Case pack 10<br>ITEM#: 39505 |
| 16" Case pack 10<br>ITEM#: 49503 | 16" Case pack 10<br>ITEM#: 49504 | 16" Case pack 10<br>ITEM#: 49505 |

## PRE-CUT REPLACEMENT LINERS

| MOSSMAT                          | COCO LINER                       | MOISTURE MAT                     | BURLAP PLASTILINER               |
|----------------------------------|----------------------------------|----------------------------------|----------------------------------|
| 12" Case pack 10<br>ITEM#: 21503 | 12" Case pack 10<br>ITEM#: 21504 | 12" Case pack 10<br>ITEM#: 21505 | 12" Case pack 10<br>ITEM # 21506 |
| 14" Case pack 10<br>ITEM#: 31503 | 14" Case pack 10<br>ITEM#: 31504 | 14" Case pack 10<br>ITEM#: 31505 | 14" Case pack 10<br>ITEM # 31506 |
| 16" Case pack 10<br>ITEM#: 41503 | 16" Case pack 10<br>ITEM#: 41504 | 16" Case pack 10<br>ITEM#: 41505 | 16" Case pack 10<br>ITEM # 41506 |
| 18" Case pack 10<br>ITEM#: 51503 | 18" Case pack 10<br>ITEM#: 51504 | 18" Case pack 10<br>ITEM#: 51505 | 18" Case pack 10<br>ITEM # 51506 |
| 20" Case pack 10<br>ITEM#: 61503 | 20" Case pack 10<br>ITEM#: 61504 | 20" Case pack 10<br>ITEM#: 61505 | 20" Case pack 10<br>ITEM # 61506 |
| 24" Case pack 5<br>ITEM#: 71503  | 24" Case pack 5<br>ITEM#: 71504  | 24" Case pack 5<br>ITEM#: 71505  | 24" Case pack 5<br>ITEM # 71506  |
| 28" Case pack 3<br>ITEM#: 81503  | 28" Case pack 3<br>ITEM#: 81504  | 28" Case pack 3<br>ITEM#: 81505  | 28" Case pack 3<br>ITEM # 81506  |
| 36" Case pack 2<br>ITEM#: 91503  | 36" Case pack 2<br>ITEM#: 91504  | 36" Case pack 2<br>ITEM#: 91505  | 36" Case pack 2<br>ITEM # 91506  |

### RETAIL READY MOSSMAT MINI ROLL

2'x3'  
Case pack 6  
ITEM #: 11607

2'x5'  
Case pack 6  
ITEM #: 11608



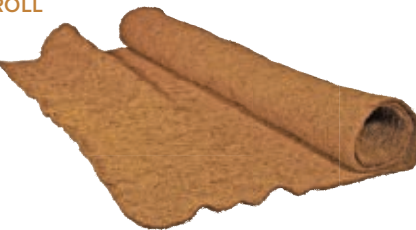
### MOSSMAT ROLL

10'x5'  
single roll  
ITEM #: 11603

### COCO LINER ROLL

10'x40"  
single roll  
ITEM #: 11604

Also  
full rolls Coco Liner  
item #: 00704 (64'x40')



### MOISTURE MAT ROLL

10'x5'  
single roll  
ITEM #: 11605

Also  
full rolls Moisture Mat  
item #:00705 (5'x10')



MOSSMAT



COCO LINER



MOISTURE MAT



BURLAP PLASTILINER

# Victorian Garden Emporium

## VICTORIAN RETAIL-READY PRE-CUT LINERS

### COCO LINER

**RETAIL-READY HANGING BASKET**  
14" Case pack 10  
ITEM #: 39554

16" Case pack 10  
ITEM #: 49554

18" Case pack 10  
ITEM #: 59554

**RETAIL-READY WALL LINER**  
16" Case pack 10  
ITEM #: 43554

22" Case pack 10  
ITEM #: 03554

25" Case pack 5  
ITEM #: 83554

**RETAIL-READY WINDOW LINER**  
24" Case pack 10  
ITEM #: 74554

30" Case pack 5  
ITEM #: 24554

36" Case pack 5  
ITEM #: 94554



### MOSSMAT

**RETAIL-READY HANGING BASKET**  
14" Case pack 10  
ITEM #: 39553

16" Case pack 10  
ITEM #: 49553

18" Case pack 10  
ITEM #: 59553

**RETAIL-READY WALL LINER**  
16" Case pack 10  
ITEM #: 43553

22" Case pack 10  
ITEM #: 03553

25" Case pack 5  
ITEM #: 83553

**RETAIL-READY WINDOW LINER**  
24" Case pack 10  
ITEM #: 74553

30" Case pack 5  
ITEM #: 24553

36" Case pack 5  
ITEM #: 94553



# Mother Nurture™

Rely on Mother Nurture™ to ensure that your clients' gardens, trees and shrubs flourish and thrive. It contains mycorrhizal fungi, naturally occurring organisms that enhance a root system's ability to improve uptake of water and nutrients. It nurtures your plants while helping you grow your business.



**MOTHER NURTURE™ 8.8 LBS.**  
20 bags per pallet  
ITEM #: 99561



**MOTHER NURTURE™ 1 LBS.**  
12 bags per case  
ITEM #: 99560



**THREE-TIER LADDER SHELF**  
30"x17"x44"  
No assembly necessary.  
Folds flat.  
ITEM #: 00105



## Grey Rattan Hanging Baskets

**GREY RATTAN 12"**  
20 per case  
ITEM #: 00950

**GREY RATTAN 14"**  
20 per case  
ITEM #: 00951

**NEW! SWIVEL PLASTIC HANGER**  
Patent Pending



Show your plants the love they deserve.

**MOTHER NURTURE**  
Growth Supplement



# Poly Resin Collection

**NEW**

This collection was designed with the commercial grower and garden center in mind. These affordable pots feature on trend designs and colors that imitate expensive natural finishes.

**12" PRAIRIE STONE**

Three Colors  
Stone  
White  
Stone Gray  
120 pcs/Pal  
**ITEM # 24563**



**14" CHARRED CLAY**

Four Colors  
Brown  
Stone  
White  
Stone Gray  
76 pcs/Pal  
**ITEM # 24568**



**17" EARTH BROWN**

Two Colors  
Stone  
Stone Gray  
26 pcs/Pal  
**ITEM # 24571**



**ROLLING SEA**

Three Colors  
Dark Red Wine  
Light Gray  
Dark Yellow

9" Rolling Sea  
108 pcs/Pal  
**ITEM # 24575**

12" Rolling Sea  
102 pcs/Pal  
**ITEM # 24579**



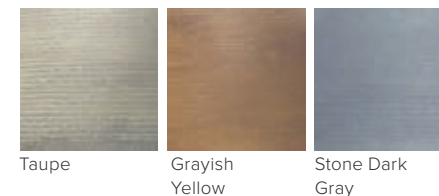
**15" BEAR BROWN**

Two Colors  
Light Gray  
Brown  
30 pcs/Pal  
**ITEM # 24587**



**12" ARCTIC DUST**

Three Colors  
72 pcs/Pal  
**ITEM # 24616**



**20" BROWN TUMBLEWEED**

Two Colors  
Light Gray  
Brown  
74 pcs/Pal  
**ITEM # 24590**



**WATERFALL**

Six Colors  
Dark Gray  
Red Wine  
Grass Green  
Turquoise  
Dark Blue  
Yellow



12" Waterfall  
108 pcs/Pal  
**ITEM # 24597**

15" Waterfall  
84 pcs/Pal  
**ITEM # 24604**



**13" WOOD BARK**

Four Colors  
172 pcs/Pal  
**ITEM # 24584**



Light Gray Redwood Dark Yellow

**IRISH CLOVER**

Three Colors  
13" Irish Clover  
126 pcs/Pal  
**ITEM # 24608**

18" Irish Clover  
87 pcs/Pal  
**ITEM # 24612**



Quicksand Rust

Quicksand White

Quicksand Yellow



**RAINBOW BRIGHT**

Six Colors

12" Rainbow Bright  
432 pcs/Pal

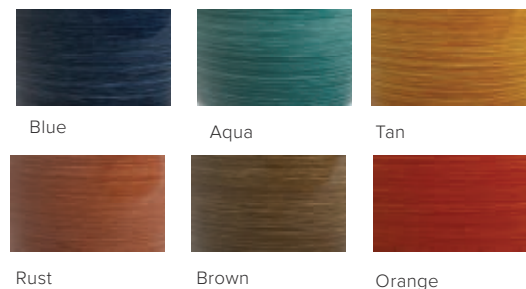
**ITEM # 24623**

13" Rainbow Bright  
264 pcs/Pal

**ITEM # 24630**

15" Rainbow Bright  
144 pcs/Pal

**ITEM # 24637**



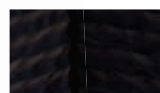
**13"PACKTHREAD UPRIGHT**

Two Colors

Dark Grey  
Black

120 pcs/Pal

**ITEM # 24670**



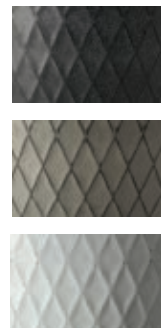
**14" VINTAGE DIAMOND**

Four Colors

Grey  
White  
Black  
Brown

36 pcs/Pal

**ITEM # 24657**



**CLASSIC RIM**

Four Colors

**12" CLASSIC RIM**

176 pcs/Pal

**ITEM # 24642**

**14" CLASSIC RIM**

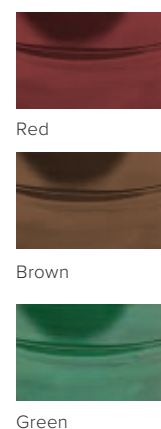
84 pcs/Pal

**ITEM # 24647**

**22" CLASSIC RIM**

54 pcs/Pal

**ITEM # 24652**



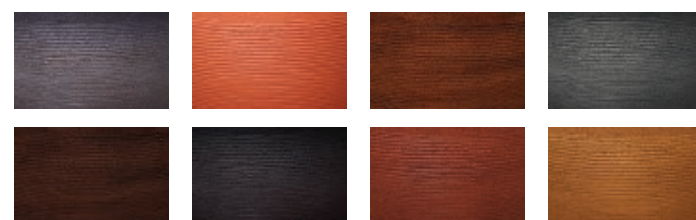
**12" NATURAL BREEZE**

Nine Colors

Red Brick  
Dark Grey  
Terra  
Taupe  
Stone Dark Grey  
Dark Brown  
Rust  
Yellow  
Grey

72 pcs/Pal

**ITEM # 24667**



# Less recalls. Less refunds. Less leftover inventory.

Purchasing best-selling product lines for your independent garden center has never been easier:

## 1. Find your products.

Get inspired as you browse our selection of over 1,000 carefully-curated garden products.

## 2. Confirm your unique pricing.

Login to our new online portal to access your wholesale prices for all available products.

## 3. Place your order online.

Save time by submitting your order requests online. If you prefer to speak to someone, you can always call us!



Find your next top-sellers at  
**braungarden.com**

**1-800-246-6984 or 905-648-1911**

info@braungroup.com

P.O. Box 160, Mount Hope, ON  
L0R 1W0 CANADA

P.O. Box 260, Bridge Station, Niagara Falls, NY  
14305 U.S.A.

Take the risk out of retail.





**BRAUN**

**GARDEN PRODUCTS**

Take the risk  
out of retail.

[braungarden.com](http://braungarden.com)

**800-246-6984 or 905-648-1911**

[info@braungroup.com](mailto:info@braungroup.com)

P.O. Box 260, Bridge Station  
Niagara Falls, NY 14305

P.O. Box 160, Mount Hope, Ont.  
Canada, L0R 1W0

**Canada and U.S. Sales**

Amadeu Pacheco  
[amadeup@braungroup.com](mailto:amadeup@braungroup.com)

Robert Burton  
[robertb@braungroup.com](mailto:robertb@braungroup.com)

Gini Oksanen  
[ginio@braungroup.com](mailto:ginio@braungroup.com)

**Quebec Sales**

Anne Bussiere  
450-794-2605 (Phone)  
450-794-2605 (Fax)  
[anneb@braungroup.com](mailto:anneb@braungroup.com)



Metal Planters



Wooden Planters



Plastic Planters



Wicker Planters



Terrariums



Accessories



Lanterns



Pottery Planters



Poly Resin Planters



Hanging Basket



Sculptures



Merchandisers

A **BRAUN** Company