

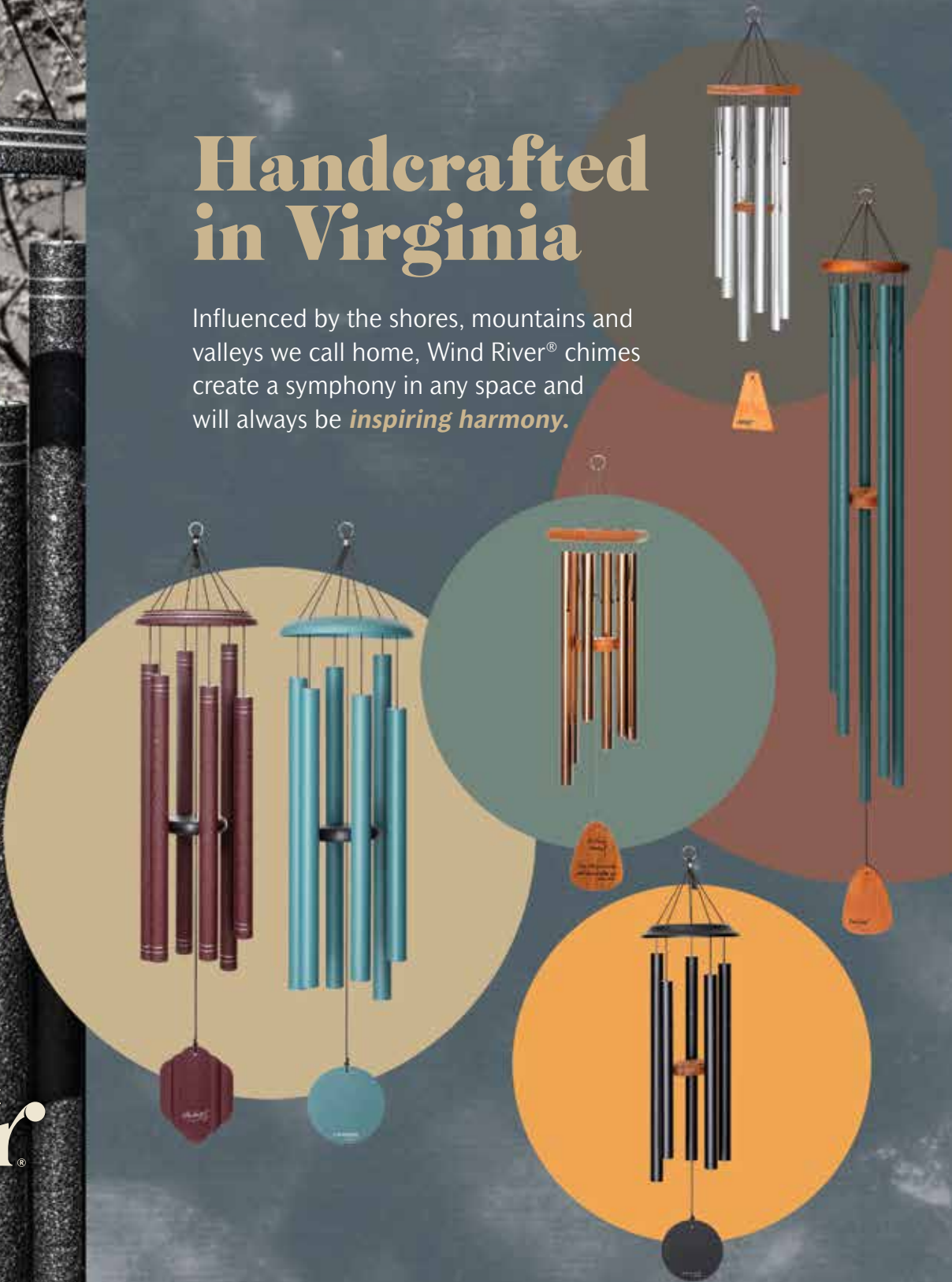
Wind River®

2022-23
CATALOG

Handcrafted in Virginia

Influenced by the shores, mountains and valleys we call home, Wind River® chimes create a symphony in any space and will always be *inspiring harmony*.

CRAFTED IN VIRGINIA
Wind River®
ESTABLISHED 1986





Inspiring harmony.

Meet the Owners



Hello! We are Jamie and Patty Baisden, and we purchased QMT Windchimes® (now Wind River®) in 2006. Together, we bring a unique passion and vision to Wind River® that can be seen in every set of wind chimes we sell.

We both graduated from Virginia Tech. We have two children, two granddaughters and a newly arrived grandson! We enjoy spoiling our grandkids, vacationing in the mountains, and participating in our local Rotary club's charitable events.

We know what it's like to be entrepreneurial, and so we have a great tool kit to draw from to help small business owners market and sell windchimes to their customers. We know how to make the purchase, display, and selling of our artisan wind chimes a success for you and your business and help you achieve your entrepreneurship goals!

About Wind River®

At Wind River®, we believe that music speaks to everyone, and melody lives forever. Memories are shaped by the soundtracks that play for a moment in our ears—and echo forever in our hearts.

For more than 30 years, we've studied and perfected what we call "the Science of Sound." Our chimes are individually handcrafted and hand-tuned, for exceptional precision and lasting beauty. From the shape of the components to the materials we use, every detail is tested and engineered to deliver superior resonance and tone.

The result is chimes that are inspired by nature and designed to make the natural world even more inspiring. Our chimes are made in Virginia and influenced by the shores, mountains and valleys we call home. Every color palette is a walk in the woods. Every chord is a choir of birds across the bay. And every breeze brings with it renewed beauty, mystery and wonder.

Wind River® chimes create a symphony in any space. But as soon as you bring one home, you realize it's so much more than a

piece of musical garden décor. It's a reminder to rest. It's a moment of calm amid the chaos of daily life. And it's a cue to pause, listen, reflect—and **BREATHE.**

Because in life, the winds of change are always moving. But no matter where they carry you, Wind River® chimes will always be inspiring harmony.



Table of Contents

New This Year

Wind River® is proud to announce new changes to our Corinthian Bells® packaging. We've resized our gift boxes to reduce the amount of space and materials used for each chime. Inside, a single insert creates a cleaner presentation and makes reboxing chimes for your customers a simpler process. Inside and out, we tell the Wind River story, inspiring harmony through our Made in the USA hand tuned chimes. Updated Corinthian Bells boxes will begin to ship by the end of the summer, followed by Arabesque® and our other brands this fall and winter.



service@windriverchimes.com

WIND RIVER® PREMIER COLLECTION

Chimes for a modern world, our contemporary wind chimes have streamlined designs and finishing touches that make them the top of their class. These chimes are trendsetters with unmatched sound and resonance.

- 5 Arabesque®** Just like in ballet, these wind chimes will dance their way into your heart and soul as they raise the standard for your outdoor decor.
- 9 Corinthian Bells®** Our best-selling chime for over 15 years with a timeless style and numerous color and size options.

WIND RIVER® DELUXE COLLECTION

An excellent balance between performance and value, these chimes combine some of the features of our premier collection with natural redwood accents found in our classic chimes.

- 13 Shenandoah Melodies®** Like a winding river, these wind chimes will calm your soul with their superior quality.

WIND RIVER® CLASSIC COLLECTION

These classic chimes are perfect for the everyday needs of our customers. Fitting for any environment and style, these wind chimes are perfect for customers from all walks of life.

- 17 Festival®** These festive chimes provide our signature quality at a mid-range price point.
- 19 Arias®** The original brand of QMT Windchimes® (now Wind River®) with stellar craftsmanship at an affordable cost.

PRODUCTS FOR SPECIAL OCCASIONS

Sometimes life requires a special gift for a special moment. These wind chimes and bird houses provide the quality our customers know and expect with a unique component for special moments in life.

- 21 In Loving Memory®** These wind chimes provide a touching remembrance for loved ones who have passed.
- 23 For the Girls®** These pink chimes support breast cancer charities with every wholesale purchase.
- 25 Mountain View®** Share the Wind River® love with your neighborhood wildlife!

- 1 About Wind River®**
- 2 Made in the USA**
- 3**
- 4 Windmill, POS Displays**
- 22 Accessories/Laser Engraving**

Made in the USA

Our chimes sound exceptional because they are exceptional.

We pride ourselves in our outstanding quality wind chimes made from raw materials sourced in the United States. Our largest suppliers are located in Florida, Georgia, Ohio, and New York, and we work hard to source our materials from fellow USA companies. We craft and assemble all of our hand-tuned chimes and ship them from our warehouse in Virginia.

Pinned Tubes: Pinned chimes use a “single string” tied to a pin inside the pipe that allows the pipe a full range of motion. Most traditional chimes have a string running in between each pipe in a zig-zag fashion. The resonance of pinned chimes will linger much longer than the traditional construction, since

the sound is not dampened by the string when the pipe moves.

Striker Density: Made from an Ultra High Density Polymer, our strikers use a soft material with a lot of mass. This gives our chimes a lot of sound without a harsh tone upon impact - creating the rich, mellow tones we're famous for.

Aluminum Alloy Pipes: Alloys can be made in many ways, each with its own musical properties. We have selected the aluminum alloy used in our pipes for its exceptional sound quality.

Redwood: We choose redwood for our wind chimes because it is sustainable, rot-resistant, and beautiful. It is also a softer wood, which creates a more mellow sound as it strikes a pipe.

Nylon Cording: We use braided nylon cording in all of our chimes. It is made for the outdoors and is treated to resist sun-damage from UV radiation.

Warranties: We know our chimes and we stand by them because we make them ourselves. Each brand is backed by our personal warranty against defects in craftsmanship or materials.

Wind River's Warranty Program: Each of our chimes has a card with information about the warranty enclosed in the box. The warranty covers all parts in regards to errors in workmanship and materials, such as a sharp spot on a tube that causes a string to wear through.

What Is Not Covered?

The warranty does not cover normal wear and tear or loss of parts or any alterations from the original product. Aesthetic damage to the tubes or wind sail from repeatedly banging together or hitting another object does not affect the sound of the chime and is not covered by the warranty. This is normal wear and tear over either a very long time or excessive repeated contact with some object. Under normal use, the tubes of the chime should not hit each other. Chimes should be hung where they do not make contact with anything and should be taken down during extreme weather events.



View our
Made in Virginia video
to learn more



Display Your Chimes for Success

Customers will buy our chimes when they can hear them. Below are some tips to help sell our chimes successfully:

- Put chimes on display. Once customers can see, touch, and hear the chimes, they will sell themselves!
- Look at your store with “new eyes”. Attempt to see what your store looks like to a customer when they first walk in. Utilize areas that are optimal for sales such as the front of the store, floor displays, and ends of aisles.
- Create a “heat map” of your store’s floor space. Observe what areas attract shoppers the most and where they like to stop and browse.
- Make sure the chimes are displayed in good lighting.
- Display the chimes near windows and doors, where the occasional draft will ring the chimes.
- Have a CD of the chimes playing as ambiance for your customers and to show them how the chimes sound in action!
- Use the Windmill Display to place boxed chimes next to display samples so customers can make their selection and be ready to go.

Our displays provide you with a proven, ready-to-go solution to

effectively showcase our range of top-selling wind chimes in your store. Our floor and counter displays are ideal for use in premium store locations.

The Windmill Display

Let us help you sell more chimes! Avoid the hassle of unwrapping and unboxing chimes to display them, going to the backroom to find more chimes to restock them, and then re-boxing them when a customer purchases them.

Instead, let the Windmill Display do the work for you. After a customer chooses a wind chime they love, they can simply grab a gift-boxed chime from the display below the chimes. Our Windmill Display is versatile and made to accommodate any of our brands. Call us to discuss an assortment that is just right for your store.



Point-of-Sale Displays

Highlight a chime near your checkout, on a shelf, or in a window display with one of our POS displays.

Chapel: Holds 1 chime up to 36” long



CHAPEL-OAK
CHAPEL-CDR

Table top: Holds 1 chime up to 27” long



TABLETOP-OAK
TABLETOP-CDR

Quartet: Holds 4 chimes up to 27” long



QUARTET-OAK
QUARTET-CDR

Arabesque®

These wind chimes are a sophisticated version of our classic best-selling wind chime, Corinthian Bells®. An “arabesque” is a graceful type of move in ballet, and once you purchase an Arabesque® wind chime you’ll see where they get their name!

These chimes have elegance and grace – with engraved tubes and domes, a curved wind sail with decorative scallops, and a beautiful lacy texture with a glossy finish. These chimes will dance into your heart and make your soul soar!

5 Year Warranty



Listen to this chime

Gift Box

Arabesque® chimes will begin shipping in redesigned gift boxes this fall.



AR206

AR306

AR406

AR516





Available Colors

-  Garnet (GT)
-  Onyx (OX)
-  Emerald (EM)
-  Sapphire (SP)

Key Features

- Available in 6 sizes
- Engraved tubes and dome
- Elegant colors
- Curved wind sail



Scale	A	E	C	A
Colors				
Overall Length	32"	36"	44"	50"
Tube Diameter	0.875"	1"	1.25"	1.5"
Longest Tube	15"	18.5"	23"	27.75"

Arabesque®

BY WIND RIVER®

AR626

AR736



G

G



57"

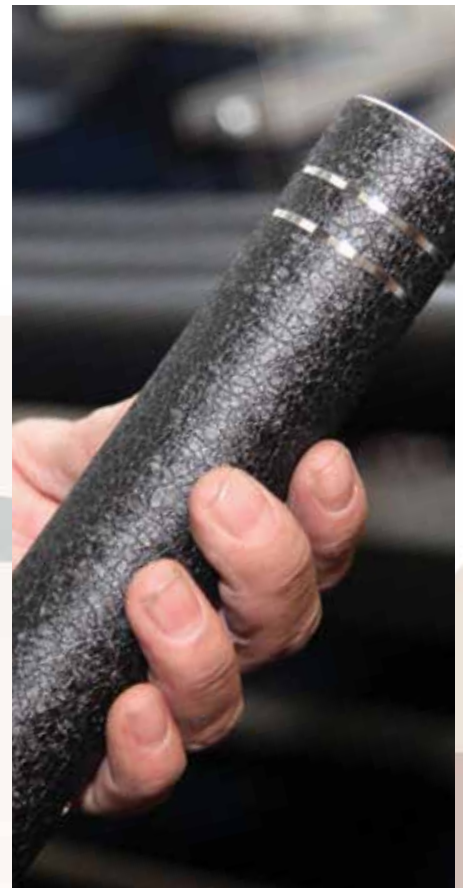
59"

1.75"

2"

32"

34.25"



800-345-2530

Mon-Fri 8:00am – 5:00pm ET

service@windriverchimes.com

Arabesque® Displays

Case Pack

ARCP1

Item	QTY
32" AR206	6
36" AR306	8
44" AR406	6
50" AR516	3

The Arabesque® case pack includes our most popular sizes in assorted colors for the fastest possible delivery time, and is the quickest way to restock your store.

Danse de Arabesque®: Wind Chimes & Piano

Arabesque® wind chimes, paired with an inspired collection of arrangements set to piano, evoke the graceful and dynamic world of ballet.



Single

Assortments

Length / SKU	AB1	AB1RFL
32" - AR206	5	5
36" - AR306	5	5
44" - AR406	3*	3
50" - AR516	2	2
57" - AR626	1	1
SINGLE DISPLAY	1	—

* Includes one AR406 chime free of charge as a display offset.

The Single displays 12 Arabesque® wind chimes in a compact 18"x18"x69" space.



Tower

Assortments

Length / SKU	AB2	AB2RFL
32" - AR206	6*	6
36" - AR306	5	5
44" - AR406	3	3
50" - AR516	3	3
57" - AR626	1	1
59" - AR736	1	1
TOWER DISPLAY	1	—

* Includes two AR206 free of charge as display offsets.

The Tower displays 19 Arabesque® wind chimes and measures 29"x20"x83".



Wind River®

Inspiring harmony.

Triple

Length / SKU	Assortments	
	AB3	AB3RFL
32" - AR206	8	8
36" - AR306	6*	6
44" - AR406	3	3
50" - AR516	3	3
57" - AR626	2	2
59" - AR736	2	2
TRIPLE DISPLAY	1	-

* Includes two AR306 free of charge as display offsets.

The Triple displays 23 Arabesque® wind chimes and measures 53"x20"x84".



Windmill

Length / SKU	Assortments	
	ABWM	ABWMRFL
32" - AR206	12	12
36" - AR306	12	12
44" - AR406	8*	8
50" - AR516	8	8
WINDMILL DISPLAY	1	-

* Includes one AR406 free of charge as a display offset.

The Windmill displays 18 Arabesque® wind chimes and measures 28"x28"x83".



Windmill XL

Length / SKU	Assortments	
	ABWMXL	ABWMXLRFL
32" - AR206	12	12
36" - AR306	12	12
44" - AR406	8	8
50" - AR516	8*	8
57" - AR626	2	2
59" - AR736	2	2
WINDMILL XL DISPLAY	1	-

* Includes one AR516 free of charge as a display offset.

The Windmill XL displays 20 Arabesque® wind chimes and measures 40"x32"x82".

Corinthian Bells®

Our best-selling chimes for over 15 years, Corinthian Bells® bring our excellent quality wind chimes to your home with the endurance and durability our customers know and love. We created Corinthian Bells® to be the best, and our customers know it – which is why they choose Corinthian Bells® time and time again over other brands on the market.

These chimes are eye-catching and beautiful to listen to, with hand-tuned tubes producing gentle harmonies.

5 Year Warranty

**best
SELLING
brand**



Listen to this chime

Available Colors

-  Patina Green (PG)
-  Midnight Blue (MB)
-  Ruby Splash® (RS)
-  Black (BL)
-  Green (GN)
-  Copper Vein (CV)
-  Plum (PM)
-  Silver Vein (SV)

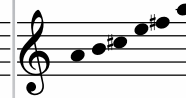
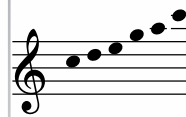
T106



T206



T306



Scale

C

A

E

Colors



Overall Length

27"

30"

36"

Tube Diameter

0.75"

0.875"

1"

Longest Tube

12.5"

15"

18.5"



Corinthian Bells®

BY WIND RIVER®

T406	T516	T626	T736	T836	T446	T936
C	A	G	G	E ^b	C	B
44"	50"	56"	60"	65"	74"	78"
1.25"	1.5"	1.75"	2"	2.25"	1.25"	2.5"
23"	27.75"	32"	34.25"	40.25"	53.5"	47.75"

Gift Box

Corinthian Bells® will begin shipping in redesigned gift boxes this summer.



Corinthian Bells® Displays

Case Pack

CBCP1

Item	QTY
27" T106	6
30" T206	8
36" T306	6
44" T406	3
50" T516	3

The Corinthian Bells® case pack includes our most popular sizes in assorted colors for the fastest possible delivery time, and is the quickest way to restock your store.

Corinthian Bells® Relaxation CD



The Corinthian Bells® Relaxation CD includes 15 tracks with over 50 minutes of music. Each track features several sizes of Corinthian Bells® chimes. Use the relaxation CD as background music in your store, or as a supplement to your chime sales.

Single

Assortments

Length / SKU	CB1	CB1RFL
27" - T106	4	4
30" - T206	4	3
36" - T306	2	2
44" - T406	2*	2
50" - T516	2	2
56" - T626	1	1
SINGLE DISPLAY	1	-

* Includes one T406 chime free of charge as a display offset.

The Single displays 12 Corinthian Bells® chimes and measures 18"x18"x69".



Tower

Assortments

Length / SKU	CB2A	CB2B	CB2C	CB2RFL
27" - T106	4	4	4	4
30" - T206	4	4	4	4
36" - T306	4*	4*	4*	4
44" - T406	3	3	3	3
50" - T516	3	3	3	3
56" - T626	1	1	1	1
60" - T736	-	1	1	-
65" - T836	-	-	1	-
TOWER DISPLAY	1	1	1	-

* Includes two T306 chimes free of charge as display offsets.

The Tower displays 19 wind chimes and measures 29"x20"x83". Assortments A, B, and C allow you to choose your largest chime. The Tower display will accommodate all Corinthian Bells® sizes.



Triple

Assortments

Length / SKU	CB3A	CB3B	CB3C	CB3RFL
27" - T106	4	4	4	4
30" - T206	4	4	4	5
36" - T306	5*	5*	5*	5
44" - T406	4*	4*	4*	4
50" - T516	3	3	3	3
56" - T626	2	2	2	2
60" - T736	1	1	1	1
65" - T836	—	1	1	—
78" - T936	—	—	1	—
74" - T446	1	1	1	—
TRIPLE DISPLAY	1	1	1	—

* Includes one T306 and one T406 free of charge as display offsets.
The Triple displays 23 chimes and measures 53"x20"x84".



Windmill

Assortments

Length / SKU	CBWM	CBWMRFL
27" - T106	12	12
30" - T206	12	12
36" - T306	12*	12
44" - T406	12	12
WINDMILL DISPLAY	1	—

* Includes two T306 free of charge as display offsets.

The Windmill displays 18 Corinthian Bells® chimes and measures 28"x28"x83".



Windmill XL

Assortments

Length / SKU	CBWMXL	CBWMXLRFL
27" - T106	12	12
30" - T206	12	12
36" - T306	12	12
44" - T406	12	12
50" - T516	4*	4
56" - T626	4	4
60" - T736	2	2
WINDMILL XL DISPLAY	1	—

* Includes one T516 free of charge as a display offset.

The Windmill XL displays 20 Corinthian Bells® chimes and measures 40"x32"x82".

Shenandoah Melodies®

Wind River® is located near the Shenandoah Valley of Virginia, and our inspiration for these chimes comes from its gorgeous natural beauty. Imagine floating down a river every time you hear its calming music!

Shenandoah Melodies® are available in 4 colors inspired by the Shenandoah. The durable powder coated finish on these chimes makes them weather-resistant and perfect for any climate. And better yet, these chimes provide the quality you have come to know and love at a lower price.

3 Year Warranty



Listen to this chime

Available Colors

-  Black (BL)
-  Copper Vein (CV)
-  Green (GN)
-  Plum (PM)

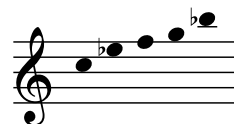
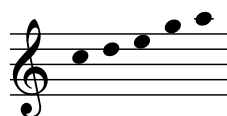
Key Features

- Durable powder coated finish
- Graceful dome profile
- Weather resistant

S1105



S1205



Scale	C	E ^b
Colors		
Overall Length	26"	29"
Tube Diameter	0.75"	0.875"
Longest Tube	12.5"	14"






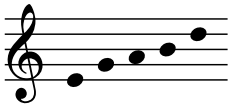
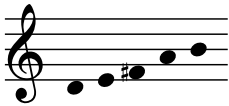

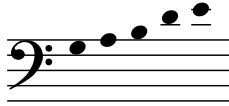








Wind River®

Inspiring harmony.

Shenandoah Melodies®

BY WIND RIVER®

S1305	S1405	S1515	S1725	S1825
				
				
D	D	B	G	F#
				
35"	42"	47"	59"	64"
1"	1.25"	1.5"	2"	2.25"
18.5"	22"	26.25"	34"	37.25"



Gift Box



Shenandoah Melodies® will begin shipping in redesigned gift boxes this fall.



Shenandoah Melodies® Displays



Shenandoah Melodies® displays are constructed from sturdy oak, and stained to coordinate with the strikers on our chimes. Each is screen printed with the Wind River® logo and “Made in the USA”.

Single

Assortments

Length / SKU	SM1	SM1RFL
26" - S1105	2	2
29" - S1205	2*	2
35" - S1305	3	3
42" - S1405	2	2
47" - S1515	2	2
SINGLE DISPLAY	1	—



* Includes two S1205 chimes free of charge as display offsets.

The Single displays up to 12 Shenandoah Melodies® chimes and measures 18"x18"x69".



Tower

Assortments

Length / SKU	SM2A	SM2B	SM2RFL
26" - S1105	2	2	2
29" - S1205	4	4	4
35" - S1305	4*	4*	4
42" - S1405	2*	2*	2
47" - S1515	2	2	2
59" - S1725	1	1	1
64" - S1825	—	1	—
TOWER DISPLAY	1	1	—

* Includes one S1305 and one S1405 chime free of charge as display offsets.

The Tower displays 19 Shenandoah Melodies® wind chimes and measures 29"x20"x83".



Triple

Assortments

Length / SKU	SM3A	SM3B	SM3RFL
26" - S1105	5	5	5
29" - S1205	5*	5*	5
35" - S1305	5	5	5
42" - S1405	4	4	4
47" - S1515	3	3	3
59" - S1725	2	2	2
64" - S1825	–	1	–
TRIPLE DISPLAY	1	1	–

* Includes three S1205 chimes free of charge as display offsets.

The Triple displays 23 Shenandoah Melodies® chimes and measures 53"x20"x84".



Windmill

Assortments

Length / SKU	SMWM	SMWMRFL
26" - S1105	12	12
29" - S1205	12	12
35" - S1305	12*	12
42" - S1405	12	12
WINDMILL DISPLAY	1	–

* Includes two S1305 chimes free of charge as display offsets.

The Windmill displays 18 chimes and measures 28"x28"x83".



Windmill XL

Assortments

Length / SKU	SMWMXL	SMWMXL RFL
26" - S1105	12	12
29" - S1205	12	12
35" - S1305	12*	12
42" - S1405	12	12
47" - S1515	4	4
59" - S1725	4	4
64" - S1825	2	2
WINDMILLXL DISPLAY	1	–

* Includes three S1305 chimes free of charge as display offsets.

The Windmill XL displays 20 Shenandoah Melodies® chimes and measures 40"x32"x82".

Festival®

These festive chimes will soothe you with their sweet melody. The hand-tuned aluminum tubes compose beautiful music, and the North American redwood striker and dome accentuate its rustic appearance.

These chimes are made with iconic QMT construction and quality, and are weather-resistant for any environment! Our Festival® chimes are built to last in your family for years to come.

Quartet

Assortments

LENGTH / SKU	FQRT	FQTRFL
18" - F336	5	5
24" - F416	3*	3
24" - F418	2	2
QUARTET	1	-

* Includes two F416 free of charge as display offsets.



Listen to this chime

Available Colors






-  Bronze (C)
-  Silver (S)
-  Forest Green (FG)

2 Year Warranty



F336 F416 F418 F635 F636



Scale	G	D	D	B ^b	B ^b
Colors					
Overall Length	18"	24"	24"	28"	30"
Tube Diameter	0.5"	0.625"	0.625"	0.875"	0.875"
Longest Tube	8.5"	11"	11"	14"	14.75"



Gift Box

Festival® chimes will begin shipping in redesigned gift boxes this fall.



F716

F916

F735



D

C

E



36"

42"

60"

1"

1.25"

1"

20"

23.25"

46"



Single

Assortments

Length / SKU	FST1	FST1RFL
18" - F336	4	4
24" - F416	3	3
24" - F418	2	2
28" - F635	2*	2
30" - F636	2	2
36" - F716	2	2
42" - F916	1	1
60" - F735	1	1
SINGLE DISPLAY	1	-



* Includes two F635 chimes free of charge as display offsets.

The Single displays 12 Festival® chimes and measures 18"x18"x69".

Case Pack

FCP1

Item	QTY
18" F336	7
24" F416	8
24" F418	6
28" F635	6

Arbor

Assortments

Length / SKU	FSTARB	FSTARBRFL
18" - F336	6	6
24" - F416	3	3
24" - F418	2	2
28" - F635	3	3
30" - F636	4	4
36" - F716	4*	4
42" - F916	1	1
60" - F735	1*	1
ARBOR DISPLAY	1	-



* Includes one F716 and one F735 chime free of charge as display offsets.

The Arbor displays 19 Festival® chimes and measures 27"x20"x83".

Windmill

Assortments

Length / SKU	FSTWM	FSTWMRFL
18" - F336	8	8
24" - F416	6	6
24" - F418	6	6
28" - F635	6	6
30" - F636	6*	6
36" - F716	4	4
42" - F916	4	4
60" - F735	4	4
WINDMILL DISPLAY	1	-

* Includes three F636 chimes free of charge as display offsets.

The Windmill displays 18 Festival® chimes and measures 28"x28"x83".



Arias®

Our original brand that has been popular for over 30 years! Arias® is a basic wind chime that is built with the same high-standards of excellence and quality, but at a more affordable price.

Like all of our wind chimes, all of the components of our Arias® chimes are made in the USA – unlike most other chimes on the market. Made of weather-resistant American redwood and hand-tuned aluminum tubes, our Arias wind chimes are both visually stunning and long-lasting!

2 Year Warranty

Available Colors

 Satin Silver (S)

Key Features

- Our original line of chimes
- Affordable price point
- Excellent sound quality
- Classic, rustic design

P52

M41

M62

M63

M65

M66



Scale

C

B^b

B^b

D

G

E

Colors



Overall Length

17"

27"

29"

34"

44"

58"

Tube Diameter

0.5"

0.875"

0.875"

1"

1"

1"

Longest Tube

7.75"

12.75"

14.75"

20"

28"

43.75"



Listen to this chime



Gift Box

Arias® chimes will begin shipping in redesigned gift boxes this fall.





Single

Length / SKU	Assortments	
	A1	A1RFL
17" - P52	3	3
27" - M41	3	3
29" - M62	4	4
34" - M63	4*	4
44" - M65	1*	1
58" - M66	2	2
SINGLE DISPLAY	1	-

* Includes one M63 and one M65 chime free of charge as display offsets.

The Single displays 12 Festival® chimes and measures 18"x18"x69".

Quartet

LENGTH / SKU	Assortments	
	AQRT	AQTRFL
17" - P52	5**	5
27" - M41	5	5
QUARTET DISPLAY	1	-

** Includes three P52 chimes free of charge as display offsets.



Arbor

Length / SKU	Assortments	
	AARB	AARBFL
17" - P52	5	5
27" - M41	4	4
29" - M62	4*	4
34" - M63	4*	4
44" - M65	2	2
58" - M66	2	2
ARBOR DISPLAY	1	-

* Includes two M62 and two M63 chimes free of charge as display offsets.

The Arbor displays 19 Arias® chimes and measures 27"x20"x83".



In Loving Memory®

In times of grief, these wind chimes can provide a lasting memory of those we have loved and lost. In Loving Memory® wind chimes provide a sentimental and personal touch for family and friends who are mourning the loss of a loved one.

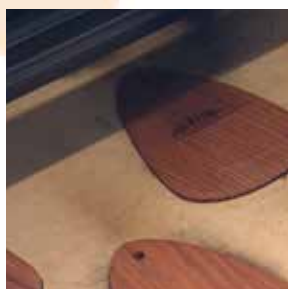
These chimes are designed to be displayed at florists, funeral homes, and stores in the sympathy market. We have Chapel and Table top fixtures that can support both the wind chime and flowers during funerals and memorial services.

2 Year Warranty



Listen to this chime

	L336	L418	L206	L306	L406
Available Colors					
Scale	G	D	A	E	C
Colors					
Overall Length	18"	24"	30"	35"	42"
Tube Diameter	0.5"	0.625"	0.875"	1"	1.25"
Longest Tube	8.5"	11"	15"	18.5"	23.25"



Gift Box



Each In Loving Memory® chime comes in an attractive box.

Single

Length / SKU	Assortments	
	ILM1	ILM1RFL
18" - L336	5*	5
24" - L418	5	5
30" - L206	3*	3
35" - L306	2	2
42" - L406	1	1
CHAPEL	1	—
SINGLE DISPLAY	1	—

* Includes two L336 and one L206 chime free of charge as display offsets.

The Single displays 12 chimes and measures 18"x18"x69".



In Loving Memory® Engraving

Standard Phrases

- #1 - "What we have once enjoyed we can never lose ..."
Helen Keller
- #2 - "The Lord is my Shepherd ..."
Psalm 23:1
- #3 - "The Lord bless you and keep you ... and give you peace"
Numbers 6:24-26
- #4 - "I am with you always, until the end of the age"
Matthew 28:20
- #5 - "I am the light of the world, whoever follows me will never walk in darkness"
John 8:12
- #6 - "Heaven and Earth will pass away, but My Words will never pass away"
Luke 21:33
- #7 - "Those we love don't go away; they walk beside us every day..."
- #8 - "It is during our darkest moments that we must focus on the light."
Aristotle
- #9 - "In the end, it's not the years in your life that count. It's the life in your years."
Abraham Lincoln

Table top:
Holds one chime up to 27" long.
Chimes sold separately.



Chapel:
Holds one chime up to 36" long.
Chimes sold separately, flowers not included.



Chapel XL:
Holds one chime up to 42" long.
Chimes sold separately, flowers not included.

Arbor

Length / SKU	Assortments	
	ILMARB	ILMARBRFL
18" - L336	8	8
24" - L418	6	6
30" - L206	4	4
35" - L306	4*	4
42" - L406	2	2
CHAPEL	1	—
ARBOR DISPLAY	1	—

* Includes two L306 chimes free of charge as display offsets.

The Arbor displays 19 chimes and measures 27"x20"x83".



Custom Phrases

In addition to one of the nine engraved inspirational verses, we offer customized engraving on the reverse side. You may order custom engraving with a complete chime or as a custom wind sail to attach to a chime you have in stock.

For the Girls®

These eye-catching pink wind chimes were created by Wind River's Patty Baisden after her own mother's battle with breast cancer. We donate 20% of the wholesale price to breast cancer charities.

Patty created the chimes to provide hope and support for all who are affected by a breast cancer diagnosis. Patty hopes that the soothing resonance of their music may bring hope and encouragement to all those fighting the battle, and provide a victory song for the survivors!

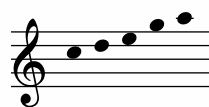
3 Year Warranty



1105



1305



Scale

C

E

Overall Length

25"

34"

Tube Diameter

0.75"

1"

Longest Tube

12.5"

17.5"



For the Girls® Table Display

25" - FTG1105	3
34" - FTG1305	3
FTG TABLE DISPLAY	1



Listen to this chime

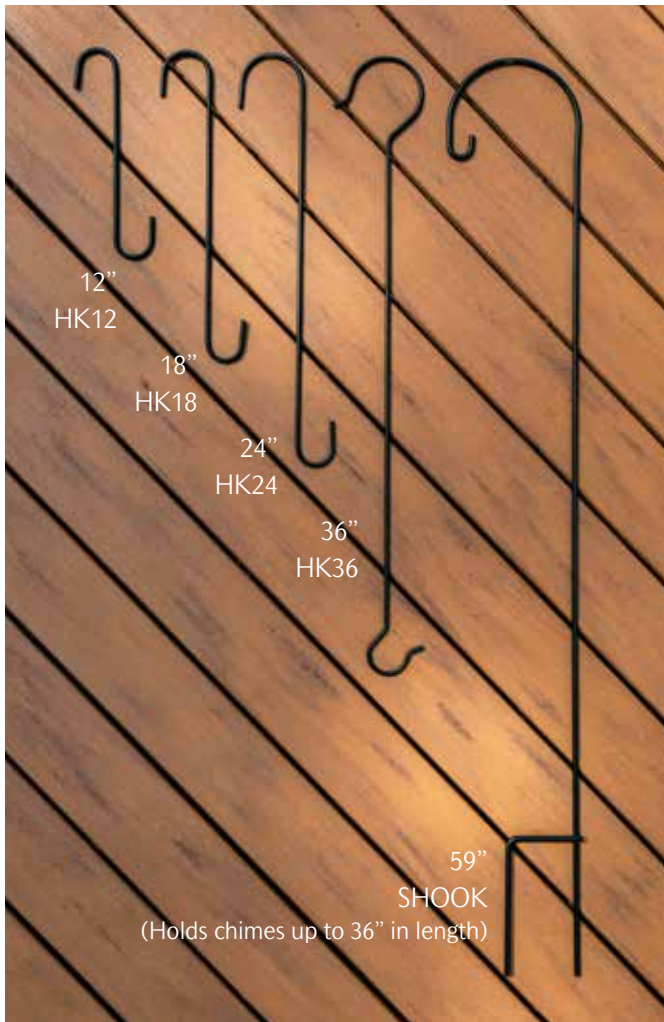


Gift Box

Each For the Girls® wind chime ships in an attractive box for easy gifting.

Tree Hooks

Made from quarter inch stainless steel, these heavy-duty hooks easily support our largest chimes. Available in four sizes, the longer hooks feature extra wide tops to reach around thicker limbs. Powder coated with a classic black finish for years of outdoor use.



All Tree Hooks and Shepherd Hooks are sold in sets of five.

Custom Laser Engraving

Laser engraved wind chimes make great domestic, US manufactured souvenirs and allow your chimes to be customized for added interest. Engrave your chimes with your store logo, an inspirational verse, or a destination to offer your customers a unique keepsake. Turn your chimes into memorable gifts with an engraved design unique to your store.



Laser engraving requires a minimum order of fifteen chimes. Contact our customer service team for setup and engraving fees.

Laser engraving is available for Arias®, Festival®, and In Loving Memory® wind chimes.



- 1** Contact our Customer Service Center to start the setup process.* Send your text or logo design to service@windriverchimes.com.
- 2** We'll provide an electronic proof for your approval. Once approved, you're ready to order.
- 3** Order your engraved chimes by requesting the engraved option when you order your chimes.

*The setup process may take 3-5 days.



Mountain View®

These redwood products provide a natural and rustic decoration for your yard, while also providing shelter and sustenance to birds. Each birdhouse has a removable roof to make it easy to clean, and comes with a pre-drilled mounting block and pair of screws for easy assembly.

These naturally decay-resistant pieces are functional and elegant at the same time.

The birds in your neighborhood will love their own Wind River bird feeders and houses!

<p>BF-01</p>  <p>Small Feeder 9.5"x8"x9.5"</p>	<p>BF-01B</p>  <p>Small Feeder w/ Bird 9.5"x8"x9.5"</p>	<p>BF-12</p>  <p>Feeder 10"x8"x9.5"</p>
<p>BF-12B</p>  <p>Feeder w/ Bird 10"x8"x9.5"</p>	<p>BF-23</p>  <p>Medium Feeder 12"x8.5"x10.75"</p>	<p>BF-34</p>  <p>Large Feeder 14"x11"x11.5"</p>
<p>BH-10</p>  <p>Wren House 6.5"x8"x8"</p>	<p>BH-21</p>  <p>Bluebird House 7.5"x10"x9.5"</p>	<p>BH-32</p>  <p>Flycatcher House 8.5"x11"x10"</p>



Etching Options

The BF-01 and BF-12 bird feeders are available with plain acrylic glass or an optional etched bird.



Westbrook Display

Assortments

SKU	WSTB	WSTBRFL
BH-10	3	3
BH-21	3	3
BH-32	1	1
BF-01	2	2
BF-01B	1	1
BF-12	2*	2
BF-12B	1	1
BF-23	2*	2
BF-34	1	1
WESTBROOK DISPLAY	1	-

* Includes one BF-12 and two BF-23 feeders free of charge as display offsets.
The Westbrook displays 6 bird houses and 6 bird feeders and measures 16" x 21" x 69".



Wind River®

2022-23
CATALOG



PO Box 823
Manassas Park, Virginia 20113
T: 800-345-2530 | F: 800-345-2521
service@windriverchimes.com

www.windriverchimes.com



Watch our
video to
learn about
Wind River®
Chimes!