

JACKSON
POTTERY

- 2025 DESIGN CATALOG

B E Y O N D

THE ARTISTRY
OF PLANTERS



01
Glazed Ceramics
 THE PROMISE OF POTENTIAL
 pg 3



02
Terracotta
 THE WISDOM OF TRADITION
 pg 39



03
Weathering Steel
 THE FLOW OF NATURE
 pg 45



04
Lightweight Planters
 THE UNITY OF ALL THINGS
 pg 49



Visit the JCS website to view our full line of cast stone planters.
www.jacksoncaststone.com

DISCOVERY

“We shall not cease from exploration, and the end of all our exploring will be to arrive where we started and know the place for the first time.”
 T. S. Eliot, *Four Quartets*

Welcome to our annual catalog—a trek into uncharted territories of botanical beauty, where every page invites you to embark on a creative discovery. Inspired by T. S. Eliot’s poem, *Four Quartets*, our catalog transcends the mere presentation of planters—it’s a celebration of artistry, innovation, and limitless potential. Join us on this journey where the road less traveled is the only route worth taking, and the joy of exploration knows no limits.

Our vision at Jackson Pottery is to be the trusted pioneer in the landscape design industry, setting the standard for quality and innovation. By continuously exploring new solutions and staying ahead of trends, we aim to redefine the landscape pottery market and enrich the outdoor design experience for professionals across the nation.



→ **UNPARALLELED SELECTION:**

- **Global Sourcing Network:** We travel the world to find the best-in-class planters for landscape architects, designers, and the dealers who support them.
- **Extensive Inventory:** With over 3 million in inventory, warehoused year-round in our Dallas facilities, we offer unmatched availability to meet your project and seasonal needs.

→ **INNOVATION AND CREATIVITY:**

- **Pioneers of Design:** Continuously pushing boundaries, we introduce fresh, cutting-edge options that ignite imagination and set trends.
- **Bespoke Solutions:** Our “pick and pack” options empower you to craft a tailored collection, meeting your specific needs with ease.

→ **TRANSPARENT AND CUSTOMER-FRIENDLY:**

- **Upfront Pricing:** Enjoy transparent pricing and clear shipping costs upfront, ensuring confidence in every purchase without hidden surprises.
- **Predictable Shipping:** Benefit from our customer-friendly freight incentives, providing clarity and peace of mind regarding shipping costs from the outset.

Product Listings	3-60
Planter Color Index	61-74
Terms and Conditions	75
Order Form	76

- ❄️ FROST RESISTANT
- DRAIN HOLE
- ⊗ NO DRAIN HOLE



Antique Copper (ACPR)

01

Glazed Ceramics THE PROMISE OF POTENTIAL

Enter a realm where time is but a fleeting whisper, and the vivid hues and textures of glazed ceramics echo across the ages. From the classic allure of falling blue to the daring character of volcanic rust, our glazed ceramics offer a kaleidoscope of possibilities, urging you to explore, create, and discover.



Falling Blue (FB)



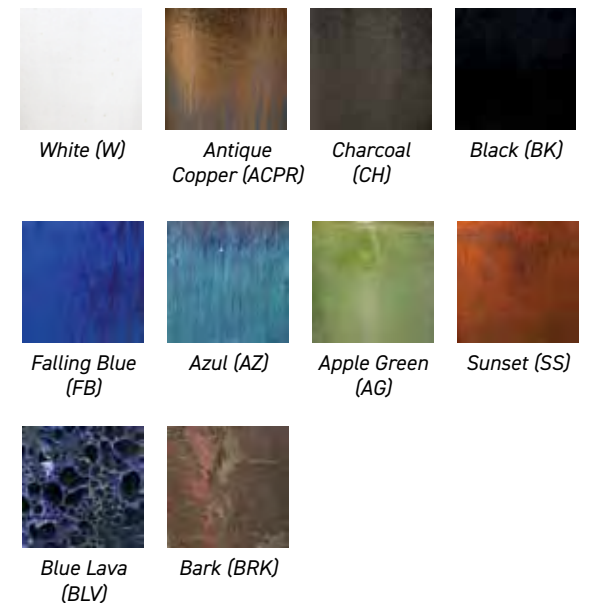
Sunset (SS)

Vaso Planter



Cat#	OD/W	PO	Ht.	Base
DG-007S2	18"	15"	18"	11"
	23"	20"	23"	15"
DG-007C	27.5"	24"	28"	18"

View planters in all colors in the Color Index. (pg 61)





Blue Lava (BLV)



Antique Copper (ACPR)



Matte White (MW)

New Tall Hexham



Cat#	OD/W	PO	Ht.	Base
DG-012S2	16"	13"	19"	8"
	21"	17"	23"	10"
DG-012C	25"	21"	27"	15"

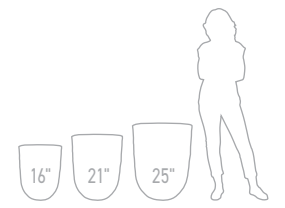
View planters in all colors in the Color Index. (pg 61)



Matte White (MW)



Antique Copper (ACPR)



Charcoal (CH)



Black (BK)



Falling Blue (FB)



Azul (AZ)



Falling Blue (FB)

Tall Vestro

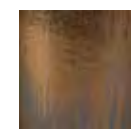


Cat#	OD/W	PO	Ht.	Base
DG-978S2	15"	13"	19"	9"
	20"	17"	23"	11"
DG-978C	24"	21"	26"	14"
New DG-978D	28"	24"	31"	16.5"

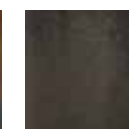
View planters in all colors in the Color Index. (pg 61)



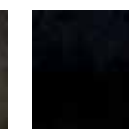
Antique White (AW)



Antique Copper (ACPR)



Charcoal (CH)



Black (BK)



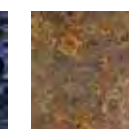
Falling Blue (FB)



Azul (AZ)



Blue Lava (BLV)



Volcanic Rust (VR)



Baltic White (BLW)



Baltic White (BLW)

Tall Egg Pot



Cat#	OD/W	PO	Ht.	Base
BLW-306D	22"	18"	26"	13"
BLW-306E	26"	22"	31"	16"

*Set of 3 smaller sizes available online.



Baltic White (BLW)





White Lava (WLV)



Antique White/ Brown (AWBR)



Azul (AZ)



Black (BK)



Volcanic Rust/ Avocado (VRAV)

Egg Planter



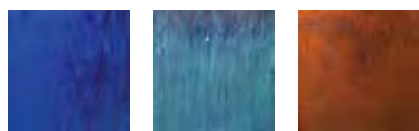
Cat#	OD/W	PO	Ht.	Base
DG-113E	22"	19"	22"	14.5"

*Set of 4 smaller sizes available online.

View planters in all colors in the Color Index. (pg 61)



Antique White (AW) Antique Copper (ACPR) Charcoal (CH) Black (BK)



Falling Blue (FB) Azul (AZ) Sunset (SS)



Blue Lava (BLV) Volcanic Rust (VR) White Lava (WLV)



Rain Pot



Cat#	OD/W	PO	Ht.	Base
DG-2086C	23"	19.5"	23"	13"

*Set of 2 smaller sizes available online.

View planters in all colors in the Color Index. (pg 61)



Antique White/ Brown (AWBR) Volcanic Rust/ Falling Blue (VRFB) Volcanic Rust/ Avocado (VRAV)



New Centurian Planter



Cat#	OD/W	PO	Ht.	Base
DG-021	31"	22.5"	31"	21.5"

View planters in all colors in the Color Index. (pg 61)



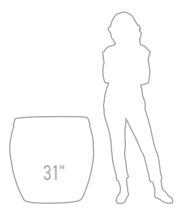
Antique Copper (ACPR)



Antique Copper (ACPR) Charcoal (CH) Black (BK) Azul (AZ)



Artisan (ART) Ancient Earth over Blue (AEBL) Ancient Earth over Azul (AEAZ)





Azul (AZ)



Charcoal (CH)

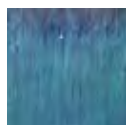
New Midtown Architectural Planter

Cat#	OD/W	PO	Ht.	Base
DG-027S2	16.5"	13"	12.5"	9"
	21.5"	17"	17"	12"
DG-027C	27.5"	22.5"	21"	17"

View planters in all colors in the Color Index. (pg 61)



Charcoal (CH)



Azul (AZ)



Antique White (AW)



Seaside (S)



Aged Aqua (AAQ)

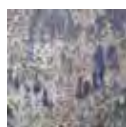
Vegas Bowl

Cat#	OD/W	PO	Ht.	Base
DG-7B	29.5"	21"	26"	16"

View planters in all colors in the Color Index. (pg 61)



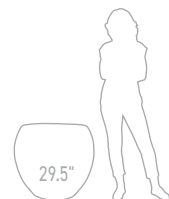
Baltic White (BLW) BLW-7B



Aged Aqua (AAQ)



Seaside (S)



The gentle breeze whispers through the air, creating an atmosphere of serene tranquility that invites you to escape the hustle and bustle of everyday life.

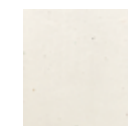
Metropole Planter

Cat#	OD/W	PO	Ht.	Base
DG-131A	15"	10"	15"	9"
DG-131B	25"	16"	24"	16"

View planters in all colors in the Color Index. (pg 61)



Antique White (AW)



Antique White (AW)



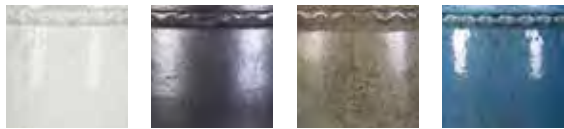


Birch White (BW)

Tall Nambe Planter ❄️🌞

Cat#	OD/W	PO	Ht.	Base
VG-85S2	16"	13"	17"	10"
	20"	16.5"	20"	14"
VG-85C	26"	21"	27"	16"

View planters in all colors in the Color Index. (pg 61)



Birch White (BW) Charcoal (CH) Mediterranean Green (MGN) Denim (DNM)



Falling Blue (FB)

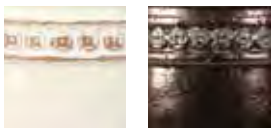
Coin Pot ❄️🌞

Cat#	OD/W	PO	Ht.	Base
DG-122D	24"	20"	22"	15"
New DG-122E*	29"	25.5"	24"	19"

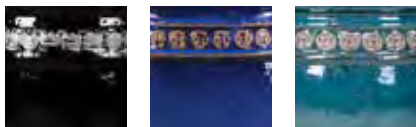
*Not available in all colors.

**Set of 3 smaller sizes available online.

View planters in all colors in the Color Index. (pg 61)



Antique White (AW) Antique Copper (ACPR)



Black (BK) Falling Blue (FB) Azul (AZ)



Volcanic Rust/Matte White (VRMW)* Volcanic Rust/Black (VRBK)* Volcanic Rust/Falling Blue (VRFB)* Volcanic Rust/Azul (VRAZ)*

*Not available in E size.

As one of our most popular planters, step into a world where history and artistry converge, embodied in the timeless beauty of our Coin Pot. The delicate, wiped "coins" encircling the rim evoke a sense of enduring charm, while the lustrous glazed finish captures the essence of ageless craftsmanship.

Azul (AZ)



Blue over Greystone (BLGS)

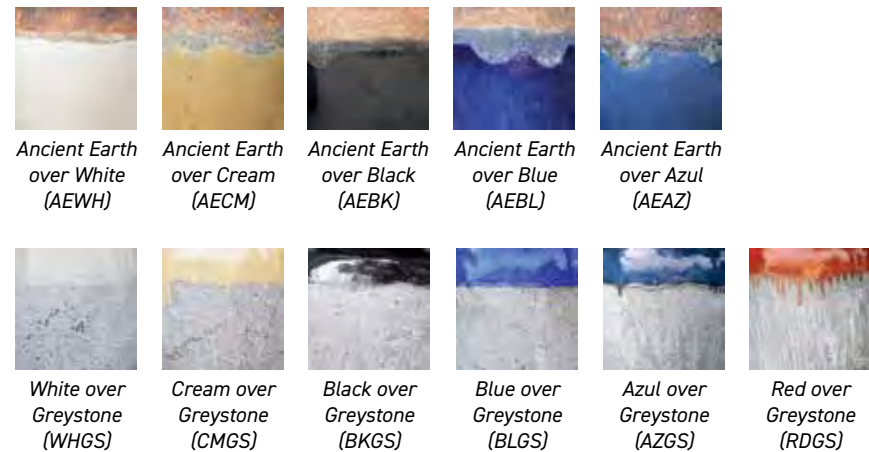


Ancient Earth over Black (AEBK)

New Claremont Planter

Cat#	OD/W	PO	Ht.	Base
	12"	9"	12"	8"
DG-033S3	15"	12"	15"	10"
	19"	15"	19"	13"
DG-033D	23.5"	19.5"	22.5"	16"

View planters in all colors in the Color Index. (pg 61)



Ancient Earth over White (AEWH)
 Ancient Earth over Cream (AECM)
 Ancient Earth over Black (AEBK)
 Ancient Earth over Blue (AEBL)
 Ancient Earth over Azul (AEAZ)

White over Greystone (WHGS)
 Cream over Greystone (CMGS)
 Black over Greystone (BKGS)
 Blue over Greystone (BLGS)
 Azul over Greystone (AZGS)
 Red over Greystone (RDGS)



Ancient Earth over Cream (AECM)

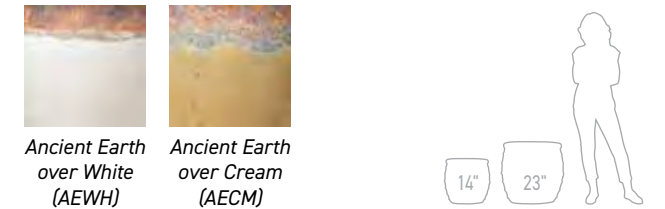


Ancient Earth over White (AEWH)

New Emperor Planter

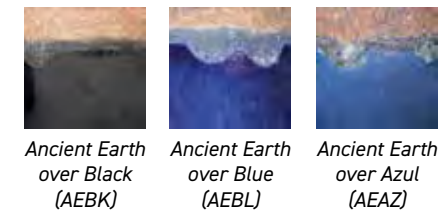
Cat#	OD/W	PO	Ht.	Base
DG-29A	14"	11.5"	16"	11"
DG-29B	23"	17.5"	22"	17"

View planters in all colors in the Color Index. (pg 61)



Ancient Earth over White (AEWH)

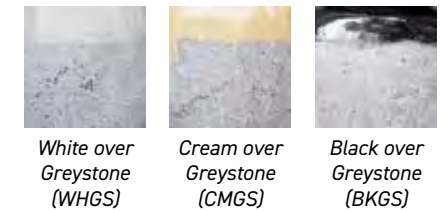
Ancient Earth over Cream (AECM)



Ancient Earth over Black (AEBK)

Ancient Earth over Blue (AEBL)

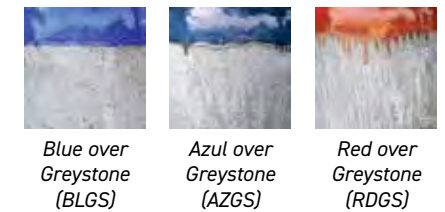
Ancient Earth over Azul (AEAZ)



White over Greystone (WHGS)

Cream over Greystone (CMGS)

Black over Greystone (BKGS)



Blue over Greystone (BLGS)

Azul over Greystone (AZGS)

Red over Greystone (RDGS)



Ancient Earth over Azul (AEAZ)



Blue Lava (BLV)



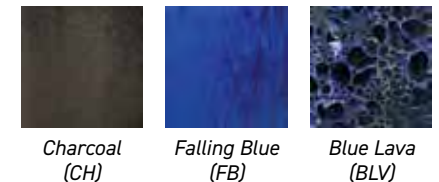
Charcoal (CH)

Cabbage Planter



Cat#	OD/W	PO	Ht.	Base
DG-649C	28"	22"	18"	15"

*Also available in a set of two smaller sizes online.
View planters in all colors in the Color Index. (pg 61)



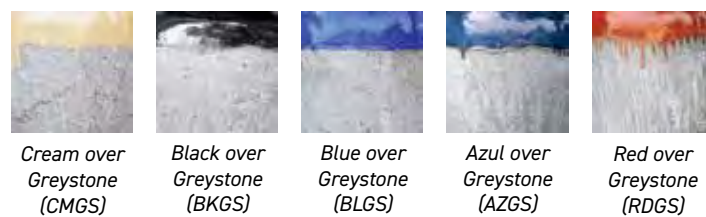
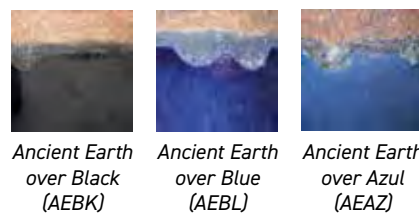
Ancient Earth over Black (AEBK)

New Magnus Water Jar



Cat#	OD/W	PO	Ht.	Base
DG-026S2	13"	9.5"	14"	7.5"
	19"	14"	21"	11"
DG-026C	29.5"	22.5"	30"	16"

View planters in all colors in the Color Index. (pg 61)



New Maricopa Water Jar

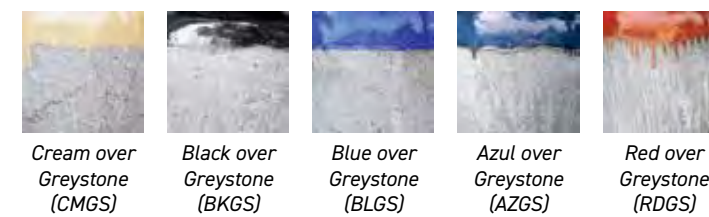
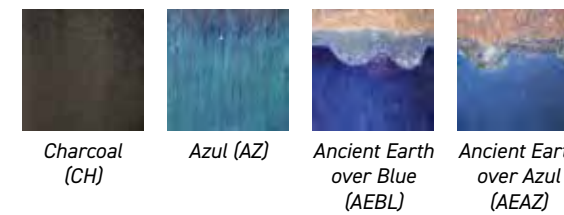


Cat#	OD/W	PO	Ht.	Base
DG-028S2	13.5"	8"	16"	7"
	19"	13"	20.5"	10.5"
DG-028C	26"	19.5"	26"	16"

View planters in all colors in the Color Index. (pg 61)



Ancient Earth over Azul (AEAZ)



01 GLAZED CERAMICS

01 GLAZED CERAMICS



Malibu Square

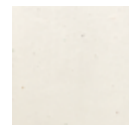


Cat#	OD/W	PO	Ht.	Base
DG-51B	15"	12"	35"	10"
New DG-51C	20"	16"	39"	13"

View planters in all colors in the Color Index. (pg 61)



Oxblood (OX)



Antique White (AW)



Antique Copper (ACPR)



Charcoal (CH)



Black (BK)



Vertex Square



Cat#	OD/W	PO	Ht.	Base
GGC-9076B	14.5"	11.5"	34"	10"

View planters in all colors in the Color Index. (pg 61)



Caribbean Blue (CNB) Oxblood (OX)



Wisteria (WI)



Falling Blue (FB)



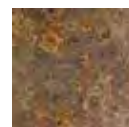
Azul (AZ)



Sunset (SS)



Blue Lava (BLV)



Volcanic Rust (VR)



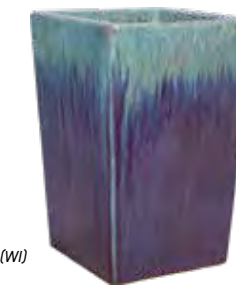
White Lava (WLV)

Large Tall Square

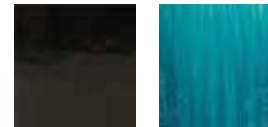


Cat#	OD/W	PO	Ht.	Base
GGC-9051	20"	17"	31.5"	16.25"

View planters in all colors in the Color Index. (pg 61)



Wisteria (WI)



Black (BK) Caribbean Blue (CNB)



Oxblood (OX) Wisteria (WI)



Tall Square

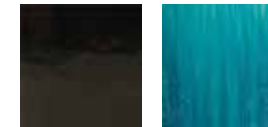


Cat#	OD/W	PO	Ht.	Base
GGC-9041S2	12"	10"	20.5"	10"
	16.5"	13"	25.5"	12.5"

View planters in all colors in the Color Index. (pg 61)



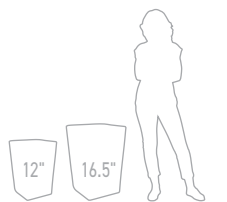
Black (BK)



Black (BK) Caribbean Blue (CNB)



Oxblood (OX) Wisteria (WI)





Volcanic Rust/ Matte White (VRMW)



Tarsus Jar Planter ❄️🕒

Cat#	OD/W	PO	Ht.	Base
DG-4199A	19"	16"	18"	13"
DG-4199B	23"	19"	24"	17"

View planters in all colors in the Color Index. (pg 61)

Tall Tarsus Jar Planter ❄️🕒

Cat#	OD/W	PO	Ht.	Base
DG-4198A	15"	12"	25"	11"
DG-4198B	20"	16"	30"	14"

View planters in all colors in the Color Index. (pg 61)



New colors coming soon. Visit jacksonpottery.com

New colors coming soon. Visit jacksonpottery.com

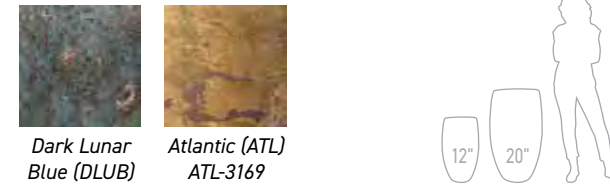


Dark Lunar Blue (DLUB)

New Corona Vase ❄️🕒

Cat#	OD/W	PO	Ht.	Base
DG-3169A	12"	8"	23"	7"
DG-3169B	20"	13"	33"	12"

View planters in all colors in the Color Index. (pg 61)



Dark Lunar Blue (DLUB)

Atlantic (ATL) ATL-3169



Antique White (AW)

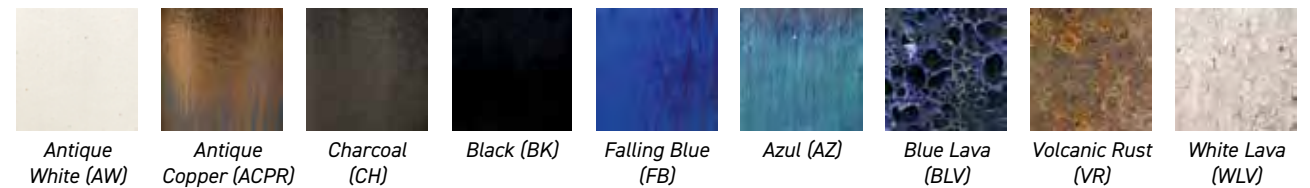


Blue Lava (BLV)

Calypso Vase ❄️🕒

Cat#	OD/W	PO	Ht.	Base
DG-125S2	13"	10"	22.5"	9"
	16"	13"	27.5"	11"
DG-125C	21"	18"	36.5"	14"

View planters in all colors in the Color Index. (pg 61)



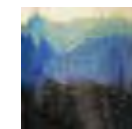
Please note that measurements are approximate and may vary by up to 3/4" (+/-). Colors and textures may slightly vary from photos.



New Rain Vase

Cat#	OD/W	PO	Ht.	Base
DG-20B	19"	13"	35"	11"

View planters in all colors in the Color Index. (pg 61)



Artisan (ART)



Artisan (ART)



Falling Blue (FB)

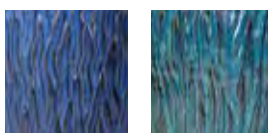


Azul (AZ)

Tall Textured Cone

Cat#	OD/W	PO	Ht.	Base
DG-146C	22"	18"	33.5"	13"

*Also available in a set of two smaller sizes online.
View planters in all colors in the Color Index. (pg 61)



Falling Blue (FB) Azul (AZ)



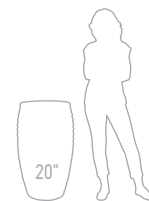
Calle Vase

Cat#	OD/W	PO	Ht.	Base
DG-25B	20"	13"	35"	13"

View planters in all colors in the Color Index. (pg 61)



Charcoal (CH) Azul (AZ) Dark Lunar Blue (DLUB)

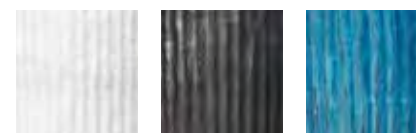


Matte White (MW)

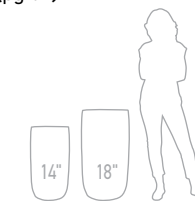
Tall Boho Vase

Cat#	OD/W	PO	Ht.	Base
DG-4181A	14"	10.5"	26"	10"
DG-4181B	18"	14"	32"	13.5"

View planters in all colors in the Color Index. (pg 61)



Matte White (MTW) Charcoal (CH) Azul (AZ)



Charcoal (CH)



Baltic White (BLW)



Baltic White (BLW)

Tall Urn



Cat#	OD/W	PO	Ht.	Base
BLW-119A	14"	9"	22"	9"
BLW-119B	17"	12"	25"	11"
BLW-119C	19"	14.5"	32"	14"

View planters in all colors in the Color Index. (pg 61)



Baltic White (BLW)



Turquoise (TQ)



Mediterranean White (W)

Cezanne Urn



Cat#	OD/W	PO	Ht.	Base
VG-846A	18"	14"	20"	11"
VG-846B	24"	20"	27"	15"

View planters in all colors in the Color Index. (pg 61)



Birch White (BW)

Mediterranean White (W)
ME-846

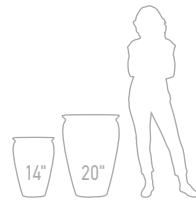
Mediterranean Green (GN)
ME-846

Denim (DNM)

Turquoise (TQ)



Dare to be bold and break from tradition - our turquoise Cezanne Urn redefines elegance in the most unexpected places.

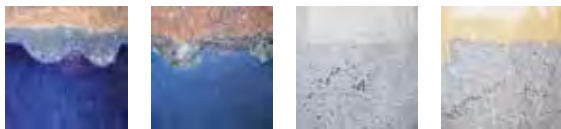


New **Bautista Water Jar**



Cat#	OD/W	PO	Ht.	Base
DG-030A	14"	11"	21"	7.5"
DG-030B	20"	16"	29"	11.5"

View planters in all colors in the Color Index. (pg 61)



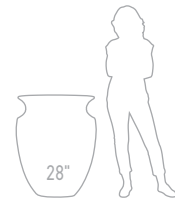
Ancient Earth over Blue (AEBL) Ancient Earth over Azul (AEAZ) White over Greystone (WHGS) Cream over Greystone (CMGS)



Black over Greystone (BKGS) Blue over Greystone (BLGS) Azul over Greystone (AZGS) Red over Greystone (RDGS)



Ancient Earth over Blue (AEBL)

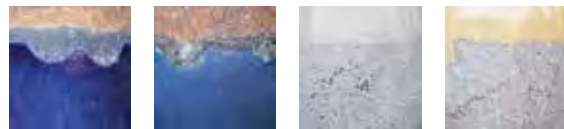


New **Maximus Jar**



Cat#	OD/W	PO	Ht.	Base
DG-032	28"	21.5"	36"	14"

View planters in all colors in the Color Index. (pg 61)



Ancient Earth over Blue (AEBL) Ancient Earth over Azul (AEAZ) White over Greystone (WHGS) Cream over Greystone (CMGS)



Black over Greystone (BKGS) Blue over Greystone (BLGS) Azul over Greystone (AZGS) Red over Greystone (RDGS)



Black over Greystone (BKGS)



Cream over Greystone (CMGS)

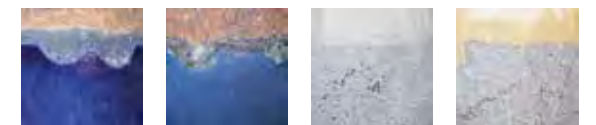


New **Deja Water Jar**



Cat#	OD/W	PO	Ht.	Base
DG-031	23.5"	10"	48"	13"

View planters in all colors in the Color Index. (pg 61)



Ancient Earth over Blue (AEBL) Ancient Earth over Azul (AEAZ) White over Greystone (WHGS) Cream over Greystone (CMGS)



Black over Greystone (BKGS) Blue over Greystone (BLGS) Azul over Greystone (AZGS) Red over Greystone (RDGS)



Atlantic (ATL)



Dark Lunar Blue (DLUB)

Vasilios Jar



Cat#	OD/W	PO	Ht.	Base
DG-109A	18"	10.5"	28"	11"
DG-109B	24"	14"	32"	15"

View planters in all colors in the Color Index. (pg 61)



Dark Lunar Blue (DLUB)



Atlantic (ATL) ATL-109



Seaside (S)



Dark Lunar Blue (DLUB)



Atlantic (ATL)

Theon Jar



Cat#	OD/W	PO	Ht.	Base
DG-111A	16"	11"	24"	9.5"
DG-111B	19"	13"	28"	12"
DG-111C	24"	17.5"	40"	16"

View planters in all colors in the Color Index. (pg 61)



Dark Lunar Blue (DLUB)



Atlantic (ATL) ATL-111



Nemesis Jar



Cat#	OD/W	PO	Ht.	Base
DG-241	19"	13"	33"	10"

View planters in all colors in the Color Index. (pg 61)



Aged Aqua (AAQ)



Aged Aqua (AAQ)



Seaside (S)



Aged Iron (AI)



Sculptural forms to inspire design, evoking distant shores and ancient lands.



Antique White (AW)

Waffle Jar

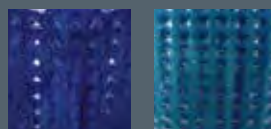


Cat#	OD/W	PO	Ht.	Base
DG-15B	28"	16"	35"	19.5"

View planters in all colors in the Color Index. (pg 61)



Antique White (AW) Charcoal (CH)



Falling Blue (FB) Azul (AZ)



Atlantic (ATL)

Gold Urn

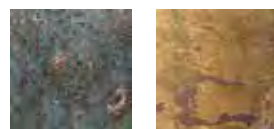


Cat#	OD/W	PO	Ht.	Base
DG-3	25"	13.75"	35"	15.5"

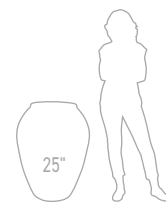
View planters in all colors in the Color Index. (pg 61)



Antique Copper (ACPR) Falling Blue (FB) Azul (AZ)



Dark Lunar Blue (DLUB) Atlantic (ATL) ATL-3



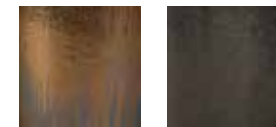
Falling Blue (FB)

Citizen Vase



Cat#	OD/W	PO	Ht.	Base
DG-127A	19"	12"	28"	11"
DG-127B	28"	20"	36"	14"

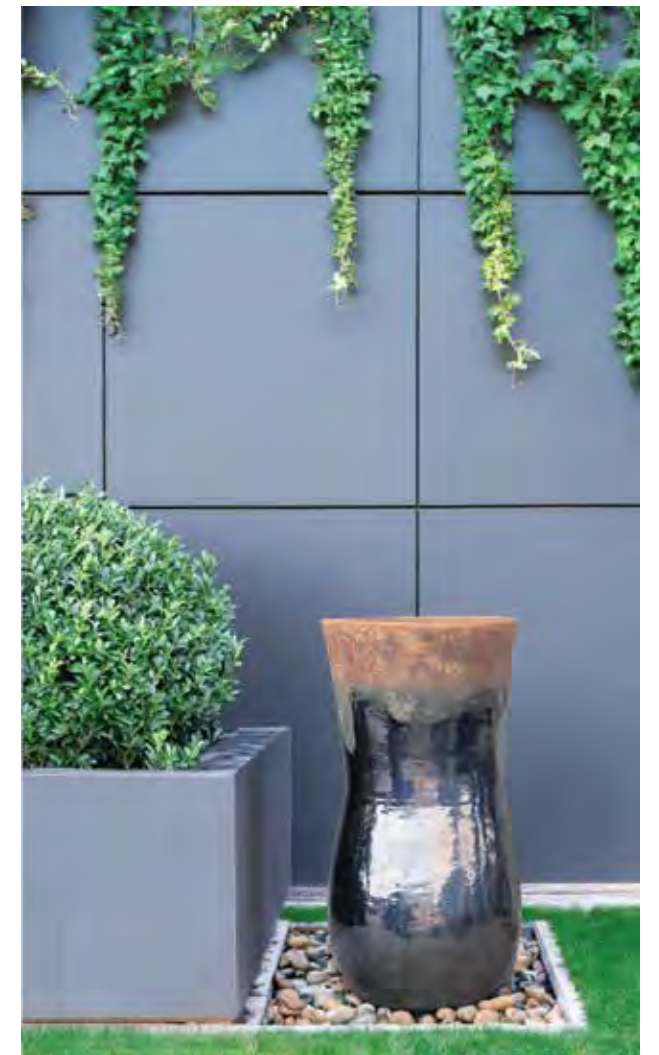
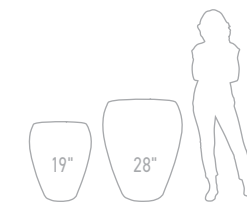
View planters in all colors in the Color Index. (pg 61)



Antique Copper (ACPR) Charcoal (CH)



Falling Blue (FB)



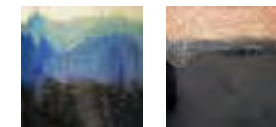
Ancient Earth over Blue (AEBL)

New Phoenician Water Jar



Cat#	OD/W	PO	Ht.	Base
DG-024B	19"	15.75"	38"	12.5"

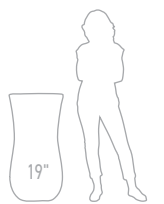
View planters in all colors in the Color Index. (pg 61)



Artisan (ART) Ancient Earth over Black (AEBK)



Ancient Earth over Blue (AEBL) Ancient Earth over Azul (AEAZ)





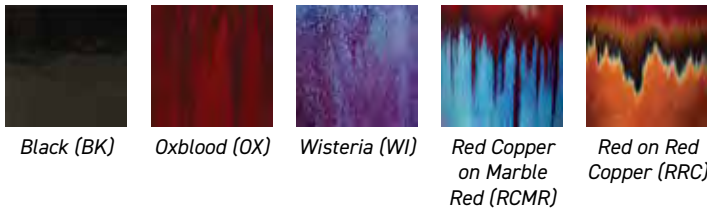
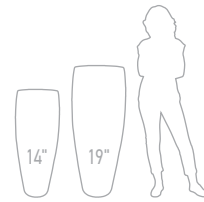
Black (BK)

Tall Slim Vase



Cat#	OD/W	PO	Ht.	Base
GGC-9388A	14"	11"	38"	9"
GGC-9388B	19"	15"	46"	11"

View planters in all colors in the Color Index. (pg 61)



Red on Red Copper (RRC)



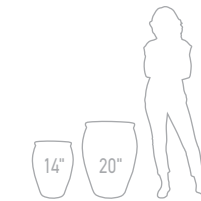
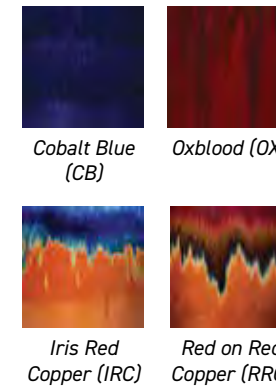
Cobalt Blue (CB)

Medium Vase



Cat#	OD/W	PO	Ht.	Base
GGC-9052S2	14"	11.5"	20"	9"
	20"	15"	27"	12"

View planters in all colors in the Color Index. (pg 61)



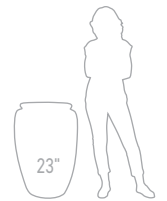
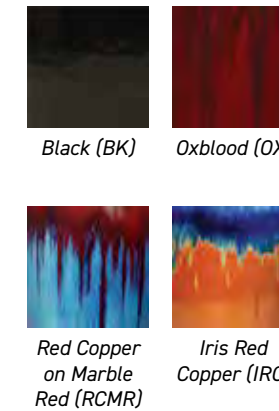
Oxblood (OX)

Storage Jar



Cat#	OD/W	PO	Ht.	Base
GGC-A057	23"	15"	34"	14"

View planters in all colors in the Color Index. (pg 61)



Round Saucer



Cat#	OD/W	Inner Dia.	Ht.
GGC-9075C	16"	12.75"	2.25"
GGC-9075D	18"	14.5"	2.5"
GGC-9075E	20.5"	17.5"	2.5"



Red Copper on Marble Red (RCMR)

Our Rustic Glazed pots marry strength and durability with artisanal charm. Fired to perfection in traditional wood burning dragon kilns at temperatures reaching 1200°C, each piece boasts a unique coloration and texture.

---> Due to the handmade nature and firing method, the colors and textures on Rustic Glazed pots can greatly vary piece to piece.



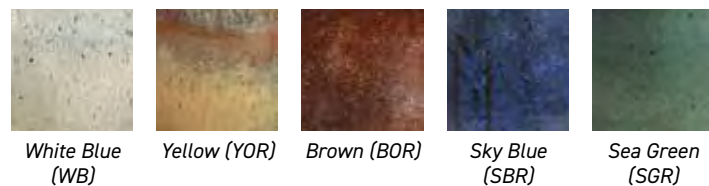
Brown (BOR)

Palm Planter

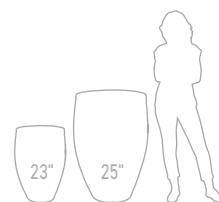


Cat#	OD/W	PO	Ht.	Base
AGR-21B	23"	17"	27"	14"
AGR-21D	25"	22"	40"	15"

View planters in all colors in the Color Index. (pg 61)



Yellow (YOR)



Oil Jar with Handles

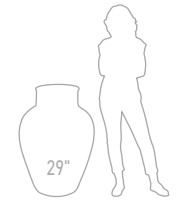
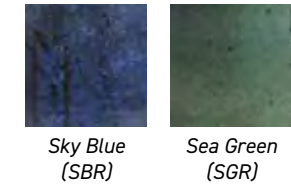


Cat#	OD/W	PO	Ht.	Base
AGR-3	29"	13.5"	39"	16.5"

View planters in all colors in the Color Index. (pg 61)



Sky Blue (SBR)



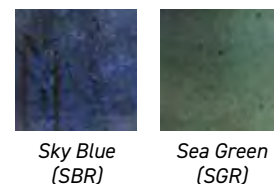
Sea Green (SGR)

Large Jar



Cat#	OD/W	PO	Ht.	Base
AGR-11C	32"	18.5"	36.5"	18"

View planters in all colors in the Color Index. (pg 61)



Sky Blue (SBR)



01 GLAZED CERAMICS

Sea Green (SGR)



Yellow (YOR)

Double Rim Pot

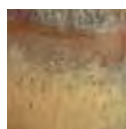


Cat#	OD/W	PO	Ht.	Base
AGR-10B	30"	26"	25.5"	16"
AGR-10C	36"	32"	30"	21"

View planters in all colors in the Color Index. (pg 61)



White Blue (WB)



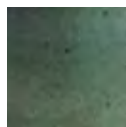
Yellow (YOR)



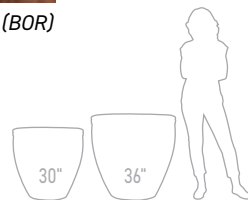
Brown (BOR)



Sky Blue (SBR)



Sea Green (SGR)



White Blue (WB)

Escala Planter

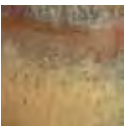


Cat#	OD/W	PO	Ht.	Base
AGR-64B	21"	18"	19"	13"
AGR-64C	27"	23"	24"	15"
AGR-64D	33"	27"	29"	17"

View planters in all colors in the Color Index. (pg 61)



White Blue (WB)



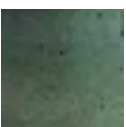
Yellow (YOR)



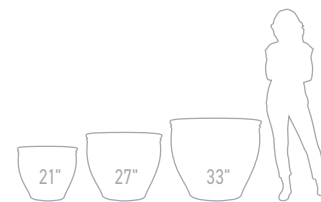
Brown (BOR)



Sky Blue (SBR)



Sea Green (SGR)



Brown (BOR)

Bordeaux Planter



Cat#	OD/W	PO	Ht.	Base
AGR-41B	29.5"	26"	31"	19"
AGR-41C	35.5"	32"	33.5"	21"

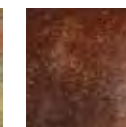
View planters in all colors in the Color Index. (pg 61)



White Blue (WB)



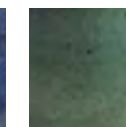
Yellow (YOR)



Brown (BOR)



Sky Blue (SBR)



Sea Green (SGR)



Sea Green (SGR)

01 GLAZED CERAMICS



Embodying centuries of ceramic mastery, our Vietnamese black clay planters boast sleek lines, unparalleled durability, and a captivating aesthetic



Drum with 3 Lines



Cat#	OD/W	PO	Ht.	Base
ADR-11B	18"	13"	14"	12"
ADR-11C	24"	19"	20"	15"
ADR-11D	31.5"	25"	25.5"	19"

Made with Vietnamese black clay.



Tall Ang Pot



Cat#	OD/W	PO	Ht.	Base
ADR-18A	18"	14"	15"	12"
ADR-18B	24.5"	19"	20"	16"
ADR-18C	31.5"	25"	24"	20"

Made with Vietnamese black clay.

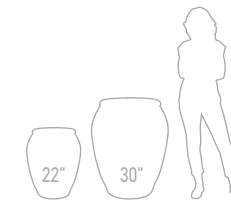


Wine Jar



Cat#	OD/W	PO	Ht.	Base
ADR-29B	22"	11"	25.5"	11"
ADR-29D	30"	15"	35"	15"

Made with Vietnamese black clay.

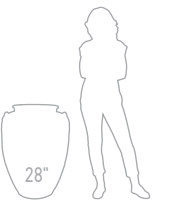


Giant Ming Urn



Cat#	OD/W	PO	Ht.	Base
ADR-24	28"	11.5"	33"	12"

Made with Vietnamese black clay.



02

Terracotta

THE WISDOM OF TRADITION

Journey into a world where the earth speaks, and the timeless allure of terracotta weaves tales of generations past. Let the strength and beauty of our Greek and Italian terracotta inspire your designs and echo through the corridors of time.

02 TERRACOTTA

02 TERRACOTTA



GREEK TERRACOTTA



Eleni Vase



Cat#	OD/W	PO	Ht.	Base
HGP-07-E	21.5"	17"	51"	14"
HGP-07-F	25.5"	18"	59"	15"



Pithos Vase



Cat#	OD/W	PO	Ht.	Base
HGP-06-E	23.5"	15"	35.5"	13"
HGP-06-F	25.5"	17.5"	39.5"	14"



Pithari Jar



Cat#	OD/W	PO	Ht.	Base
HGP-01-E	23.5"	15"	33.5"	13"
HGP-01-F	27.5"	16"	39.5"	14.5"





Zonarati Planter



Cat#	OD/W	PO	Ht.	Base
HGP-15-D	23.5"	20"	25.5"	14.5"
HGP-15-E	27.5"	25"	29.5"	15.5"



Koronios Jar



Cat#	OD/W	PO	Ht.	Base
HGP-02-E	25.5"	14"	27.5"	12.5"
HGP-02-F	29.5"	16.5"	35.5"	13.5"



Bruno Jar



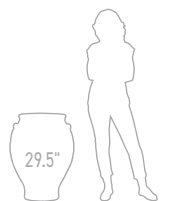
Cat#	OD/W	PO	Ht.	Base
HGP-39-A	23.5"	12.5"	25.5"	12.5"
HGP-39-B	27.5"	15"	29.5"	13.5"



Zara Jar



Cat#	OD/W	PO	Ht.	Base
HGP-08-B	29.5"	15"	31.5"	14"





Tuscan Roll Rim



Cat#	OD/W	PO	Ht.	Base
HI-12-F	23.5"	20.5"	19"	13"
HI-12-G	27.5"	23"	22.5"	15"
HI-12-H	31.5"	27.5"	26"	18"
HI-12-I	37.5"	33"	29"	20"
HI-12-J	43"	38"	33.5"	21.5"



Garland Tuscan Roll Rim



Cat#	OD/W	PO	Ht.	Base
HI-27-F	23.5"	20"	19"	13"
HI-27-G	27.5"	22.5"	22.5"	15"
HI-27-H	31.5"	27"	26"	18"
HI-27-I	37.5"	32"	29"	20"



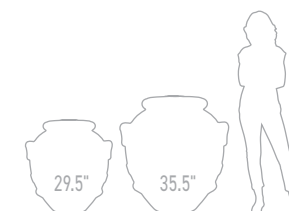
Made from premium Tuscan clay, Italian terracotta planters are known for their warm orange-red color and exceptional durability. Fired at higher temperatures, they are less porous and more frost-resistant.



Oricio Urn



Cat#	OD/W	PO	Ht.	Base
HI-56.80	29.5"	15"	31.5"	16"
HI-56-B	35.5"	18"	39"	18"





03

Weathering Steel

THE FLOW OF NATURE

Step into a realm where elements dance in harmony, and the clean lines of our planters made from COR-TEN® weathering steel mirror the rhythm of nature's cadence. Let the innate strength and timeless allure of weathered steel planters ignite your creativity and blend seamlessly with the ever-changing tapestry of the natural world.

COR-TEN® is a trademark of United States Steel Corporation.



Duran Bowl Planter



Cat#	OD/W	PO	Ht.	Base	Gauge
WRP-CT-01A	32"	29.5"	15.5"	10.5"	3mm
WRP-CT-01B	36"	33.5"	17.5"	11.5"	4mm
WRP-CT-01C	39.5"	37"	19"	12.5"	4mm

Made with COR-TEN® A Weathering Steel.



Sphera Planter

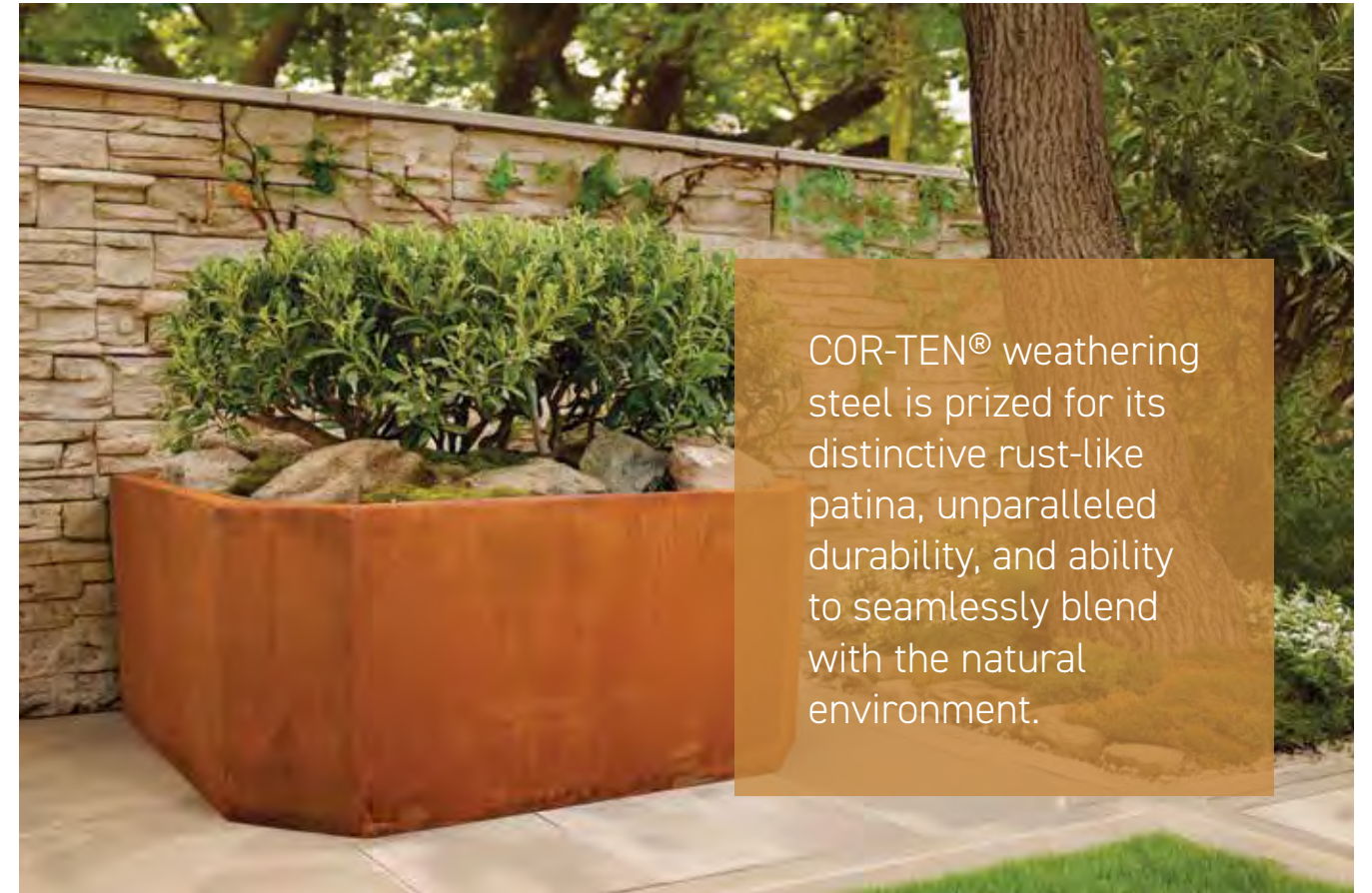


Cat#	OD/W	PO	Ht.	Base	Gauge
WRP-CT-02A	31.5"	26.5"	21"	14"	3mm
WRP-CT-02B	35.5"	28.5"	26.5"	18"	4mm
WRP-CT-02C	39.5"	29.5"	30"	18.5"	4mm

Made with COR-TEN® A Weathering Steel.



Please note that measurements are approximate and may vary by up to 3/4" (+/-). Colors and textures may slightly vary from photos.



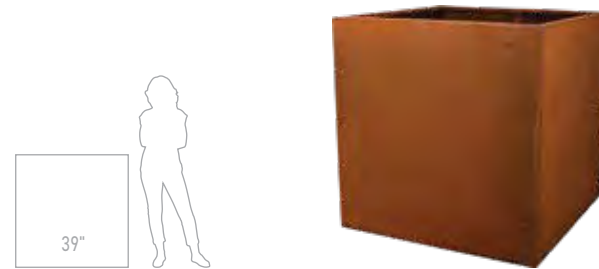
COR-TEN® weathering steel is prized for its distinctive rust-like patina, unparalleled durability, and ability to seamlessly blend with the natural environment.



Commercial Low Square ❄️🌀

Cat#	OD/W	PO	Ht.	Base	Gauge
WRP-CT-04A	39.5"	36"	20"	39.5"	2mm

Made with COR-TEN® A Weathering Steel with reinforced walls.



Commercial Tall Square ❄️🌀

Cat#	OD/W	PO	Ht.	Base	Gauge
WRP-CT-04B	39"	35.5"	39.5"	39"	2mm

Made with COR-TEN® A Weathering Steel with reinforced walls.



Republic Low Square ❄️🌀

Cat#	OD/W	PO	Ht.	Base	Gauge
WRP-CT-03A	39.5"	35.5"	20"	39.5"	2mm

Made with COR-TEN® A Weathering Steel with reinforced walls.



Republic Square ❄️🌀

Cat#	OD/W	PO	Ht.	Base	Gauge
WRP-CT-03B	39.5"	35.5"	39.5"	39.5"	2mm

Made with COR-TEN® A Weathering Steel with reinforced walls.



Our square metal planters are made with premium COR-TEN® weathering steel with reinforced walls.

The rust-like patina of steel planters offers a raw, weathered look that adds a touch of natural beauty to outdoor spaces.



Detailed corner view of the Republic Square planters.






04 Lightweight Planters

THE UNITY OF ALL THINGS

Explore a space where form and function unite, and the harmony of all things is exalted through the adaptability of lightweight planters. These innovative vessels epitomize the fusion of beauty and practicality, effortlessly blending into their surroundings.



LIGHTEST

- 
ITALIAN RESIN (ROTO-MOLDED):
 Crafted using advanced rotational molding techniques, Italian resin planters seamlessly combine lightweight construction with exceptional durability.
- 
FIBERCLAY:
 Blending durability with the classic charm of traditional clay pots, fiberclay planters feature a unique composite material consisting of fiberglass and clay.
- 
FIBERSTONE:
 Exuding the luxurious look and feel of real stone, fiberstone planters are crafted from a blend of fiberglass, stone powder, and resin.

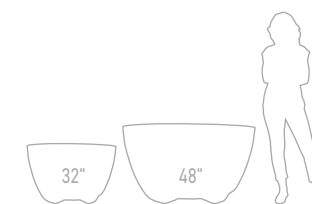
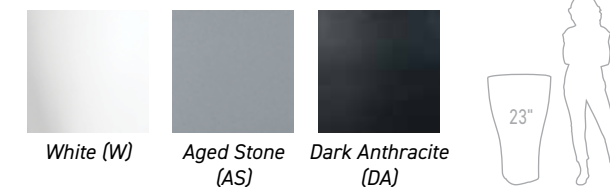
LIGHT



Domus Planter

Cat#	OD/W	PO	Ht.	Base	Wt
LGP-290	23"	18.5"	39.5"	14"	20 lbs

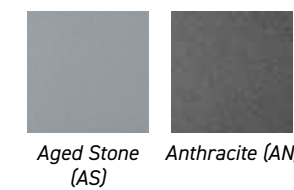
Made with Italian Resin (Roto Molded)
 Planter is stocked without drain holes for interior-scape use, but holes can easily be drilled out for exterior use.
 View planters in all colors in the Color Index. (pg 61)



Megalos Planter

Cat#	OD/W	PO	Ht.	Base	Wt
LGP-080	32"	28.5"	21"	24"	21 lbs
LGP-122	48"	45"	28.5"	34"	39 lbs

Made with Italian Resin (Roto Molded)
 Easy to move with pallet jacks and forklifts thanks to its specially designed base. Planter is stocked without drain holes for interior-scape use, but holes can easily be drilled out for exterior use.
 View planters in all colors in the Color Index. (pg 61)



Please note that measurements are approximate and may vary by up to 3/4" (+/-). Colors and textures may slightly vary from photos.

Made with advanced rotational molding techniques, our Italian Resin planters are exceptionally durable, weather-resistant, and UV-protected, ensuring they retain their beauty for years.



Dark Anthracite (DA)



Aged Stone (AS)



Dark Anthracite (DA)



Aged Stone (AS)

Hydrus Tall Square



Cat#	OD/W	PO	Ht.	Base	Wt
LGP-352	15.5"	12.5"	33.5"	10"	12 lbs

Made with Italian Resin (Roto Molded)

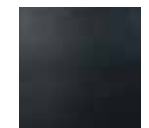
Planter is stocked without drain holes for interior-scape use, but holes can easily be drilled out for exterior use.

View planters in all colors in the Color Index. (pg 61)

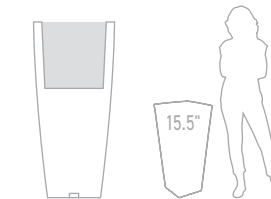


White (W)

Aged Stone (AS)



Dark Anthracite (DA)



Plantable Space
12.5" W x 12.5" Ht

Hydra Tall Cone Planter



Cat#	OD/W	PO	Ht.	Base	Wt
LGP-362	15.5"	12.5"	33.5"	10.5"	10 lbs

Made with Italian Resin (Roto Molded)

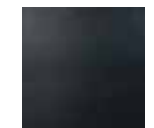
Planter is stocked without drain holes for interior-scape use, but holes can easily be drilled out for exterior use.

View planters in all colors in the Color Index. (pg 61)

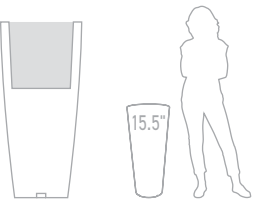


White (W)

Aged Stone (AS)



Dark Anthracite (DA)



Plantable Space
12.5" W x 12.5" Ht

Please note that measurements are approximate and may vary by up to 3/4" (+/-). Colors and textures may slightly vary from photos.



Dark Anthracite (DA)



Lightweight Park Rectangle ☹️ ❄️ ☹️

Cat#	OD/W	PO	Ht.	Base	Wt
LGP-11C	32" x 15"	28.5" x 11.5"	15"	32" x 15"	33 lbs
LGP-11D	40" x 18.5"	36.5" x 16"	18.5"	40" x 18.5"	57 lbs

Made with Fiberclay.

View planters in all colors in the Color Index. (pg 61)



Cool Grey (CG)



Granite Grey (GG)



Cool Grey (CG)



Dark Anthracite (DA)

Modern Rectangle ☹️ ❄️ ☹️

Cat#	OD/W	PO	Ht.	Base	Wt
LGP-332	39.5" x 19"	35" x 14.5"	19"	39.5" x 19"	31 lbs

Made with Italian Resin (Roto Molded)

Planter is stocked without drain holes for interior-scape use, but holes can easily be drilled out for exterior use.

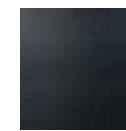
View planters in all colors in the Color Index. (pg 61)



White (W)



Aged Stone (AS)



Dark Anthracite (DA)



Plantable Space
35" L x 14.5" W x 11.8" Ht



39.5"



Plantable Space
17" W x 13.8" Ht

White (W)



Plantable Space
35.5" L x 14.5" W x 11.8" Ht

Dark Anthracite (DA)

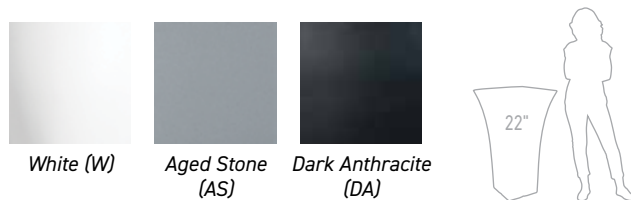
Tall Flaired Square Planter ☹️ ❄️ ☹️

Cat#	OD/W	PO	Ht.	Base	Wt
LGP-270	22"	17"	39.5"	12"	20 lbs

Made with Italian Resin (Roto Molded)

Planter is stocked without drain holes for interior-scape use, but holes can easily be drilled out for exterior use.

View planters in all colors in the Color Index. (pg 61)



White (W)

Aged Stone (AS)

Dark Anthracite (DA)

22"

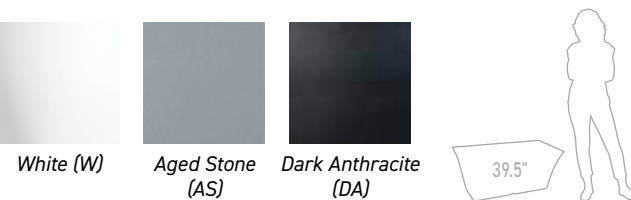
Flaired Patio Rectangle ☹️ ❄️ ☹️

Cat#	OD/W	PO	Ht.	Base	Wt
LGP-278	39.5" x 18.5"	35.5" x 14.5"	16.5"	32" x 11"	18 lbs

Made with Italian Resin (Roto Molded)

Planter is stocked without drain holes for interior-scape use, but holes can easily be drilled out for exterior use.

View planters in all colors in the Color Index. (pg 61)



White (W)

Aged Stone (AS)

Dark Anthracite (DA)

39.5"



Cool Grey (CG)



Cool Grey (CG)



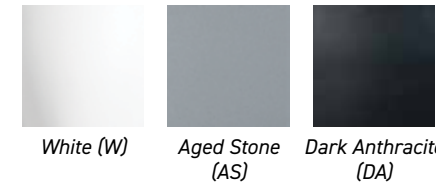
White (W)

Orion Planter



Cat#	OD/W	PO	Ht.	Base	Wt
LGP-T266	24"	20"	17.5"	12"	7 lbs

Made with Italian Resin (Roto Molded)
 Planter is stocked without drain holes for interior-scape use, but holes can easily be drilled out for exterior use.
 View planters in all colors in the Color Index. (pg 61)



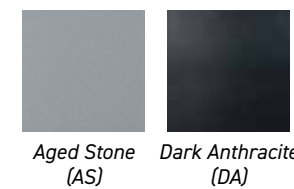
Aged Stone (AS)

Tall Orion Planter



Cat#	OD/W	PO	Ht.	Base	Wt
LGP-T324	24"	20"	23"	15"	9 lbs

Made with Italian Resin (Roto Molded)
 Planter is stocked without drain holes for interior-scape use, but holes can easily be drilled out for exterior use.
 View planters in all colors in the Color Index. (pg 61)



Lightweight Egg Planter



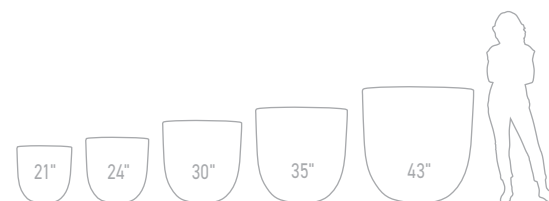
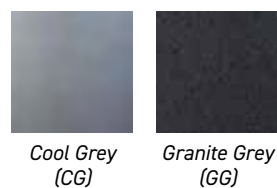
Cat#	OD/W	PO	Ht.	Base	Wt
LGP-12E	21"	19"	20"	15"	26 lbs
LGP-12F	24"	21.5"	23"	17"	33 lbs
LGP-12G	30"	25.5"	28.5"	20"	66 lbs
LGP-12H	35"	31.5"	33.5"	24"	95 lbs
LGP-12I	43"	39"	41"	28"	143 lbs

Made with Fiberclay.

View planters in all colors in the Color Index. (pg 61)



Granite Grey (GG)



Dark Anthracite (DA)



Cool Grey (CG)



Cool Grey (CG)

Lightweight Ontario Bowl

Cat#	OD/W	PO	Ht.	Base	Wt
LGP-15C	21.5"	17.5"	14.5"	13"	18 lbs
LGP-15D	30"	22"	20.5"	18"	44 lbs
LGP-15E	40"	31"	28.5"	24.5"	73 lbs

Made with Fiberclay.

View planters in all colors in the Color Index. (pg 61)



Cool Grey (CG)

Granite Grey (GG)



Granite Grey (GG)



Granite Grey (GG)

Lightweight Contractor Bowl

Cat#	OD/W	PO	Ht.	Base	Wt
LGP-16C-GG	25"	22"	13"	14"	30 lbs
LGP-16D-GG	30"	26.5"	15"	17.5"	43 lbs
LGP-16E-GG	36"	32"	17.5"	20"	60 lbs
LGP-16F-GG	44"	39.5"	20"	24.5"	88 lbs

Made with Fiberclay.

View planters in all colors in the Color Index. (pg 61)



Cool Grey (CG)

Granite Grey (GG)



Downtown Brown (DB)



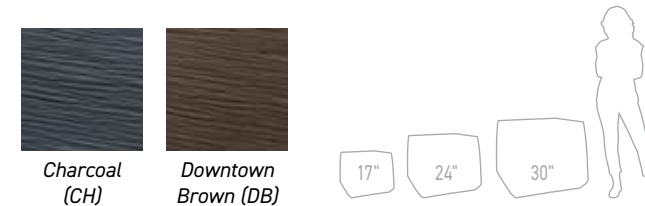
Downtown Brown (DB)

Lightweight Metropolitan Square

Cat#	OD/W	PO	Ht.	Base	Wt
LGP-13A	17"	14"	15"	15"	27 lbs
LGP-13B	24"	19"	20"	20"	53 lbs
LGP-13C	30"	24"	25.5"	25"	77 lbs

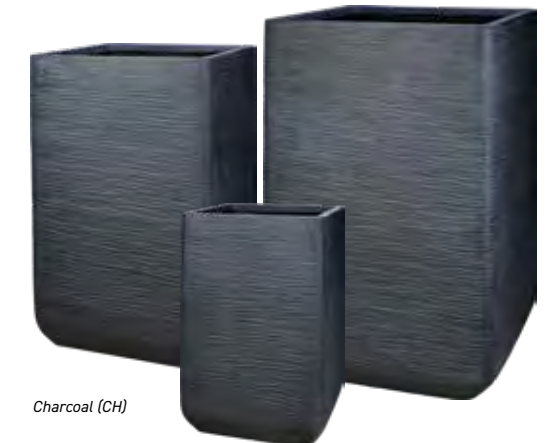
Made with Fiberclay.

View planters in all colors in the Color Index. (pg 61)



Charcoal (CH)

Downtown Brown (DB)



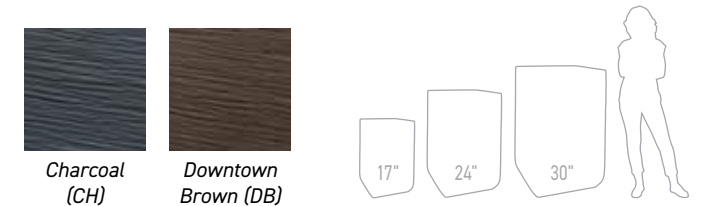
Charcoal (CH)

Lightweight Metropolitan Tall Square

Cat#	OD/W	PO	Ht.	Base	Wt
LGP-14A	17"	14"	26"	13"	39 lbs
LGP-14B	24"	19"	35.5"	18"	64 lbs
LGP-14C	30"	24"	44"	21.5"	121 lbs

Made with Fiberclay.

View planters in all colors in the Color Index. (pg 61)



Charcoal (CH)

Downtown Brown (DB)



Lead (LD)

Among our collection of lightweight planters, our Hampshire Square made from Fiberstone stands out for its perfect blend of luxury and practicality. Crafted from a mix of fiberglass, stone powder, and resin, this innovative material replicates the timeless beauty of real stone without the heavy weight.



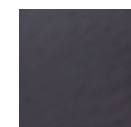
Lead (LD)

Hampshire Square



Cat#	OD/W	PO	Ht.	Base	Wt
LGP-3505E	17.5"	15.5"	17.5"	17.5"	23 lbs

Made with Fiberstone.
View planters in all colors in the Color Index. (pg 61)



Lead (LD)



Havana (HA)



Dark Anthracite (DA)

Pegasus Planter



Cat#	OD/W	PO	Ht.	Base	Wt
LGP-414	24"	21"	22"	12.5"	6 lbs
LGP-416	31.5"	28"	24.5"	16.5"	12 lbs

Made with Italian Resin (Roto Molded)
Planter is stocked without drain holes for interior-scape use, but holes can easily be drilled out for exterior use.
View planters in all colors in the Color Index. (pg 61)



Dark Anthracite (DA) Havana (HA)



Please note that measurements are approximate and may vary by up to 3/4" (+/-). Colors and textures may slightly vary from photos.



									
Vaso Planter 10 colors 3 sizes DG-007 (Pg 4)	Tall Hexham 6 colors 3 sizes DG-012 (Pg 6)	Tall Boho Vase 3 colors 2 sizes DG-4181 (Pg 22)	Calypso Vase 9 colors 3 sizes DG-125 (Pg 20)	Gold Urn 5 colors 1 size DG-3 (Pg 29)	Citizen Vase 3 colors 2 sizes DG-127 (Pg 30)	Vaso Planter 10 colors 3 sizes DG-007 (Pg 4)	Tall Vestro 8 colors 4 sizes DG-978 (Pg 5)		
									
Cezanne Urn 5 colors 2 sizes VG-846 (Pg 24)	Tall Nambe Planter 4 colors 3 sizes VG-85 (Pg 11)	Tall Vestro 8 colors 4 sizes DG-978 (Pg 5)	Tall Hexham 6 colors 3 sizes DG-012 (Pg 6)	Egg Planter 10 colors 1 size DG-113E (Pg 7)	Centurian Planter 7 colors 1 size DG-021 (Pg 8)	Midtown Architectural Planter 2 colors 3 sizes DG-027 (Pg 9)	Tall Nambe Planter 4 colors 3 sizes VG-85 (Pg 11)		
									
Egg Planter 10 colors 1 size DG-113E (Pg 7)	Metropole Planter 1 color 2 sizes DG-131 (Pg 10)	Coin Pot 9 colors 2 sizes DG-122 (Pg 11)	Malibu Square 10 colors 2 sizes DG-51 (Pg 17)	Calypso Vase 9 colors 3 sizes DG-125 (Pg 20)	Cabbage Planter 3 colors 1 size DG-649C (Pg 16)	Maricopa Water Jar 9 colors 3 sizes DG-028 (Pg 16)	Malibu Square 10 colors 2 sizes DG-51 (Pg 17)	Calypso Vase 9 colors 3 sizes DG-125 (Pg 20)	Calle Vase 3 colors 1 size DG-25B (Pg 21)
									
Waffle Jar 4 colors 1 size DG-15B (Pg 29)	Cezanne Urn 5 colors 2 sizes VG-846 (Pg 24)	Rain Pot 3 colors 1 size DG-2086C (Pg 7)	Vaso Planter 10 colors 3 sizes DG-007 (Pg 4)	Tall Vestro 8 colors 4 sizes DG-978 (Pg 5)	Tall Boho Vase 3 colors 2 sizes DG-4181 (Pg 22)	Waffle Jar 4 colors 1 size DG-15B (Pg 29)	Citizen Vase 3 colors 2 sizes DG-127 (Pg 30)	Vaso Planter 10 colors 3 sizes DG-007 (Pg 4)	Tall Vestro 8 colors 4 sizes DG-978 (Pg 5)
									
Tall Hexham 6 colors 3 sizes DG-012 (Pg 6)	Egg Planter 10 colors 1 size DG-113E (Pg 7)	Centurian Planter 7 colors 1 size DG-021 (Pg 8)	Coin Pot 9 colors 2 sizes DG-122 (Pg 11)	Malibu Square 10 colors 2 sizes DG-51 (Pg 17)	Tall Hexham 6 colors 3 sizes DG-012 (Pg 6)	Egg Planter 10 colors 1 size DG-113E (Pg 7)	Centurian Planter 7 colors 1 size DG-021 (Pg 8)	Coin Pot 9 colors 2 sizes DG-122 (Pg 11)	Malibu Square 10 colors 2 sizes DG-51 (Pg 17)



Large Tall Square
4 colors | 1 size
GGC-9051 (Pg 18)



Tall Square
4 colors | 2 sizes
GGC-9041 (Pg 18)



Calypso Vase
9 colors | 3 sizes
DG-125 (Pg 20)



Tall Slim Vase
5 colors | 2 sizes
GGC-9388 (Pg 31)



Storage Jar
4 colors | 1 size
GGC-A057 (Pg 31))



Tall Slim Vase
5 colors | 2 sizes
GGC-9388 (Pg 31)



Vegas Bowl
3 colors | 1 size
DG-7B (Pg 9)



Vaso Planter
10 colors | 3 sizes
DG-007 (Pg 4)



Tall Vestro
8 colors | 4 sizes
DG-978 (Pg 5)



Tall Hexham
6 colors | 3 sizes
DG-012 (Pg 6)



Rain Vase
1 color | 1 size
DG-20B (Pg 22)



Phoenician Water Jar
4 colors | 1 size
DG-024B (Pg 30)



Vaso Planter
10 colors | 3 sizes
DG-007 (Pg 4)



Tall Vestro
8 colors | 4 sizes
DG-978 (Pg 5)



Tall Hexham
6 colors | 3 sizes
DG-012 (Pg 6)



Egg Planter
10 colors | 1 size
DG-113E (Pg 7)



Centurian Planter
7 colors | 1 size
DG-021 (Pg 8)



Midtown
Architectural Planter
2 colors | 3 sizes
DG-027 (Pg 9)



Coin Pot
9 colors | 2 sizes
DG-122 (Pg 11)



Maricopa Water Jar
9 colors | 3 sizes
DG-028 (Pg 16)



Egg Planter
10 colors | 1 size
DG-113E (Pg 7)



Coin Pot
9 colors | 2 sizes
DG-122 (Pg 11)



Cabbage Planter
3 colors | 1 size
DG-649C (Pg 16)



Malibu Square
10 colors | 2 sizes
DG-51 (Pg 17)



Calypso Vase
9 colors | 3 sizes
DG-125 (Pg 20)



Malibu Square
10 colors | 2 sizes
DG-51 (Pg 17)



Calypso Vase
9 colors | 3 sizes
DG-125 (Pg 20)



Tall Textured Cone
2 colors | 1 size
DG-146C (Pg 21)



Calle Vase
3 colors | 1 size
DG-25B (Pg 21)



Tall Boho Vase
3 colors | 2 sizes
DG-4181 (Pg 22)



Tall Textured Cone
2 colors | 1 size
DG-146C (Pg 21)



Waffle Jar
4 colors | 1 size
DG-15B (Pg 29)



Gold Urn
5 colors | 1 size
DG-3 (Pg 29)



Citizen Vase
3 colors | 2 sizes
DG-127 (Pg 30)



Medium Vase
4 colors | 2 sizes
GGC-9052 (Pg 32)



Waffle Jar
4 colors | 1 size
DG-15B (Pg 29)



Gold Urn
5 colors | 1 size
DG-3 (Pg 29)



Vertex Square
3 colors | 1 size
GGC-9076B (Pg 17)



Large Tall Square
4 colors | 1 size
GGC-9051 (Pg 18)



Tall Square
4 colors | 2 sizes
GGC-9041 (Pg 18)



Tall Nambe Planter
4 colors | 3 sizes
VG-85 (Pg 11)



Cezanne Urn
5 colors | 2 sizes
VG-846 (Pg 24)



Vertex Square
3 colors | 1 size
GGC-9076B (Pg 17)



Large Tall Square
4 colors | 1 size
GGC-9051 (Pg 18)



Tall Square
4 colors | 2 sizes
GGC-9041 (Pg 18)



Cezanne Urn
5 colors | 2 sizes
VG-846 (Pg 24)



Nemesis Jar
3 colors | 1 size
DG-241 (Pg 28)



Tall Nambe Planter
4 colors | 3 sizes
VG-85 (Pg 11)



Cezanne Urn
5 colors | 2 sizes
VG-846 (Pg 24)



Vaso Planter
10 colors | 3 sizes
DG-007 (Pg 4)



Red on Red Copper (pg 31)



Malibu Square
10 colors | 2 sizes
DG-51 (Pg 17)



Vertex Square
3 colors | 1 size
GGC-9076B (Pg 17)



Large Tall Square
4 colors | 1 size
GGC-9051 (Pg 18)



Magnus Water Jar
8 colors | 3 sizes
DG-026 (Pg 15)



Maricopa Water Jar
9 colors | 3 sizes
DG-028 (Pg 16)



Bautista Water Jar
8 colors | 2 sizes
DG-030 (Pg 25)



Maximus Jar
8 colors | 1 size
DG-032 (Pg 25)



Deja Water Jar
8 colors | 1 size
DG-031 (Pg 26)



Medium Vase
4 colors | 2 sizes
GGC-9052 (Pg 32)



Storage Jar
4 colors | 1 size
GGC-A057 (Pg 31)



Tall Slim Vase
5 colors | 2 sizes
GGC-9388 (Pg 31)



Emperor Planter
11 colors | 2 sizes
DG-29 (Pg 14)



Claremont Planter
11 colors | 4 sizes
DG-033 (Pg 13)



Emperor Planter
11 colors | 2 sizes
DG-29 (Pg 14)



Claremont Planter
11 colors | 4 sizes
DG-033 (Pg 13)



Tarsus Jar Planter
2 colors | 2 sizes
DG-4199 (Pg 19)



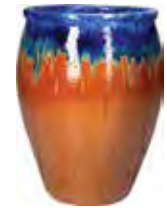
Storage Jar
4 colors | 1 size
GGC-A057 (Pg 31)



Tall Slim Vase
5 colors | 2 sizes
GGC-9388 (Pg 31)



Medium Vase
4 colors | 2 sizes
GGC-9052 (Pg 32)



Medium Vase
4 colors | 2 sizes
GGC-9052 (Pg 32)



Storage Jar
4 colors | 1 size
GGC-A057 (Pg 31)



Tall Tarsus Jar Planter
1 color | 2 sizes
DG-4198 (Pg 19)



Coin Pot
9 colors | 2 sizes
DG-122 (Pg 11)



Vaso Planter
10 colors | 3 sizes
DG-007 (Pg 4)



Volcanic Rust (pg 7)



Egg Planter
10 colors | 1 size
DG-113E (Pg 7)



Malibu Square
10 colors | 2 sizes
DG-51 (Pg 17)



Calypso Vase
9 colors | 3 sizes
DG-125 (Pg 20)



Emperor Planter
11 colors | 2 sizes
DG-29 (Pg 14)



Claremont Planter
11 colors | 4 sizes
DG-033 (Pg 13)



Tall Vestro
8 colors | 4 sizes
DG-978 (Pg 5)



Corona Vase
2 colors | 2 sizes
ATL-3169 (Pg 20)



Calypso Vase
9 colors | 3 sizes
DG-125 (Pg 20)



Bautista Water Jar
8 colors | 2 sizes
DG-030 (Pg 25)



Maximus Jar
8 colors | 1 size
DG-032 (Pg 25)



Deja Water Jar
8 colors | 1 size
DG-031 (Pg 26)



Emperor Planter
11 colors | 2 sizes
DG-29 (Pg 14)



Claremont Planter
11 colors | 4 sizes
DG-033 (Pg 13)



Egg Planter
10 colors | 1 size
DG-113E (Pg 7)



Malibu Square
10 colors | 2 sizes
DG-51 (Pg 17)



Vasilios Jar
2 colors | 2 sizes
ATL-109 (Pg 27)



Theon Jar
2 colors | 3 sizes
ATL-111 (Pg 27)



Gold Urn
5 colors | 1 size
ATL-3 (Pg 29)





Tall Egg Pot
1 color | 2 sizes
BLW-306 (Pg 6)



Vegas Bowl
3 colors | 1 size
BLW-7B (Pg 9)



Tall Urn
1 color | 3 sizes
BLW-119 (Pg 23)



Nemesis Jar
3 colors | 1 size
DG-241 (Pg 28)



Coin Pot
9 colors | 2 sizes
DG-122 (Pg 11)



Coin Pot
9 colors | 2 sizes
DG-122 (Pg 11)



Centurian Planter
7 colors | 1 size
DG-021 (Pg 8)



Emperor Planter
11 colors | 2 sizes
DG-29 (Pg 14)



Claremont Planter
11 colors | 4 sizes
DG-033 (Pg 13)



Magnus Water Jar
8 colors | 3 sizes
DG-026 (Pg 15)



Emperor Planter
11 colors | 2 sizes
DG-29 (Pg 14)



Claremont Planter
11 colors | 4 sizes
DG-033 (Pg 13)



Magnus Water Jar
8 colors | 3 sizes
DG-026 (Pg 15)



Phoenician Water Jar
4 colors | 1 size
DG-024B (Pg 30)



Claremont Planter
11 colors | 4 sizes
DG-033 (Pg 13)



Ancient Earth over Blue (pg 25)



Maricopa Water Jar
9 colors | 3 sizes
DG-028 (Pg 16)



Bautista Water Jar
8 colors | 2 sizes
DG-030 (Pg 25)



Maximus Jar
8 colors | 1 size
DG-032 (Pg 25)



Emperor Planter
11 colors | 2 sizes
DG-29 (Pg 14)



Magnus Water Jar
8 colors | 3 sizes
DG-026 (Pg 15)



Maricopa Water Jar
9 colors | 3 sizes
DG-028 (Pg 16)



Bautista Water Jar
8 colors | 2 sizes
DG-030 (Pg 25)



Maximus Jar
8 colors | 1 size
DG-032 (Pg 25)



Deja Water Jar
8 colors | 1 size
DG-031 (Pg 26)



Phoenician Water Jar
4 colors | 1 size
DG-024B (Pg 30)



Emperor Planter
11 colors | 2 sizes
DG-29 (Pg 14)



Deja Water Jar
8 colors | 1 size
DG-031 (Pg 26)



Vegas Bowl
3 colors | 1 size
DG-7B (Pg 9)



Nemesis Jar
3 colors | 1 size
DG-241 (Pg 28)



Vaso Planter
10 colors | 3 sizes
DG-007 (Pg 4)



Tall Vestro
8 colors | 4 sizes
DG-978 (Pg 5)



Claremont Planter
11 colors | 4 sizes
DG-033 (Pg 13)



Magnus Water Jar
8 colors | 3 sizes
DG-026 (Pg 15)



Maricopa Water Jar
9 colors | 3 sizes
DG-028 (Pg 16)



Bautista Water Jar
8 colors | 2 sizes
DG-030 (Pg 25)



Maximus Jar
8 colors | 1 size
DG-032 (Pg 25)



Egg Planter
10 colors | 1 size
DG-113E (Pg 7)



Cabbage Planter
3 colors | 1 size
DG-649C (Pg 16)



Malibu Square
10 colors | 2 sizes
DG-51 (Pg 17)



Calypso Vase
9 colors | 3 sizes
DG-125 (Pg 20)



Rain Pot
3 colors | 1 size
DG-2086C (Pg 7)



Deja Water Jar
8 colors | 1 size
DG-031 (Pg 26)



Coin Pot
9 colors | 2 sizes
DG-122 (Pg 11)



Centurian Planter
7 colors | 1 size
DG-021 (Pg 8)



Emperor Planter
11 colors | 2 sizes
DG-29 (Pg 14)



Claremont Planter
11 colors | 4 sizes
DG-033 (Pg 13)



Magnus Water Jar
8 colors | 3 sizes
DG-026 (Pg 15)



Maricopa Water Jar
9 colors | 3 sizes
DG-028 (Pg 16)



Bautista Water Jar
8 colors | 2 sizes
DG-030 (Pg 25)



Maximus Jar
8 colors | 1 size
DG-032 (Pg 25)



Deja Water Jar
8 colors | 1 size
DG-031 (Pg 26)



Rain Pot
3 colors | 1 size
DG-2086C (Pg 7)



Emperor Planter
11 colors | 2 sizes
DG-29 (Pg 14)



Claremont Planter
11 colors | 4 sizes
DG-033 (Pg 13)



Magnus Water Jar
8 colors | 3 sizes
DG-026 (Pg 15)



Maricopa Water Jar
9 colors | 3 sizes
DG-028 (Pg 16)



Phoenician Water Jar
4 colors | 1 size
DG-024B (Pg 30)



Emperor Planter
11 colors | 2 sizes
DG-29 (Pg 14)



Claremont Planter
11 colors | 4 sizes
DG-033 (Pg 13)



Magnus Water Jar
8 colors | 3 sizes
DG-026 (Pg 15)



Maricopa Water Jar
9 colors | 3 sizes
DG-028 (Pg 16)



Bautista Water Jar
8 colors | 2 sizes
DG-030 (Pg 25)



Maximus Jar
8 colors | 1 size
DG-032 (Pg 25)



Deja Water Jar
8 colors | 1 size
DG-031 (Pg 26)



Palm Planter
5 colors | 2 sizes
AGR-21 (Pg 33)



Oil Jar with Handles
5 colors | 1 size
AGR-3 (Pg 34)



Bautista Water Jar
8 colors | 2 sizes
DG-030 (Pg 25)



Maximus Jar
8 colors | 1 size
DG-032 (Pg 25)



Deja Water Jar
8 colors | 1 size
DG-031 (Pg 26)



Large Jar
5 colors | 1 size
AGR-11C (Pg 34)



Double Rim Pot
5 colors | 2 sizes
AGR-10 (Pg 35)



Escala Planter
5 colors | 3 sizes
AGR-64 (Pg 35)



Bordeaux Planter
5 colors | 2 sizes
AGR-41 (Pg 36)



Palm Planter
5 colors | 2 sizes
AGR-21 (Pg 33)

"Color is a power
which directly
influences the soul."

- Wassily Kandinsky



Dark Lunar Blue (pg 27)



Tarsus Jar Planter
2 colors | 2 sizes
DG-4199 (Pg 19)



Corona Vase
2 colors | 2 sizes
DG-3169 (Pg 20)



Calle Vase
3 colors | 1 size
DG-25B (Pg 21)



Oil Jar with Handles
5 colors | 1 size
AGR-3 (Pg 34)



Large Jar
5 colors | 1 size
AGR-11C (Pg 34)



Double Rim Pot
5 colors | 2 sizes
AGR-10 (Pg 35)



Vasilios Jar
2 colors | 2 sizes
DG-109 (Pg 27)



Theon Jar
2 colors | 3 sizes
DG-111 (Pg 27)



Gold Urn
5 colors | 1 size
DG-3 (Pg 29)



Double Rim Pot
5 colors | 2 sizes
AGR-10 (Pg 35)



Escala Planter
5 colors | 3 sizes
AGR-64 (Pg 35)



Bordeaux Planter
5 colors | 2 sizes
AGR-41 (Pg 36)



Brown (pg 33)



Palm Planter
5 colors | 2 sizes
AGR-21 (Pg 33)



Oil Jar with Handles
5 colors | 1 size
AGR-3 (Pg 34)



Large Jar
5 colors | 1 size
AGR-11C (Pg 34)



Double Rim Pot
5 colors | 2 sizes
AGR-10 (Pg 35)



Escala Planter
5 colors | 3 sizes
AGR-64 (Pg 35)



Pithari Jar
1 color | 2 sizes
HGP-01 (Pg 40)



Pithos Vase
1 color | 2 sizes
HGP-06 (Pg 40)



Eleni Vase
1 color | 2 sizes
HGP-07 (Pg 39)



Bordeaux Planter
5 colors | 2 sizes
AGR-41 (Pg 36)



Palm Planter
5 colors | 2 sizes
AGR-21 (Pg 33)



Oil Jar with Handles
5 colors | 1 size
AGR-3 (Pg 34)



Large Jar
5 colors | 1 size
AGR-11C (Pg 34)



Double Rim Pot
5 colors | 2 sizes
AGR-10 (Pg 35)



Zonarati Planter
1 color | 2 sizes
HGP-15 (Pg 41)



Koronios Jar
1 color | 2 sizes
HGP-02 (Pg 41)



Bruno Jar
1 color | 2 sizes
HGP-39 (Pg 42)



Escala Planter
5 colors | 3 sizes
AGR-64 (Pg 35)



Bordeaux Planter
5 colors | 2 sizes
AGR-41 (Pg 36)



Palm Planter
5 colors | 2 sizes
AGR-21 (Pg 33)



Oil Jar with Handles
5 colors | 1 size
AGR-3 (Pg 34)



Large Jar
5 colors | 1 size
AGR-11C (Pg 34)



Zara Jar
1 color | 1 size
HGP-08 (Pg 42)



Tuscan Roll Rim
1 color | 5 sizes
HI-12 (Pg 43)



Garland Tuscan Roll Rim
1 color | 4 sizes
HI-27 (Pg 44)



Oricio Urn
1 color | 2 sizes
HI-56 (Pg 44)



Vietnamese Black Clay (pg 38)



Escala Planter
5 colors | 3 sizes
AGR-64 (Pg 35)



Bordeaux Planter
5 colors | 2 sizes
AGR-41 (Pg 36)



Drum with 3 Lines
1 color | 3 sizes
ADR-11 (Pg 37)



Tall Ang Pot
1 color | 3 sizes
ADR-18 (Pg 37)



Wine Jar
1 color | 2 sizes
ADR-29 (Pg 38)



Giant Ming Urn
1 color | 1 size
ADR-24 (Pg 38)



CORTEN METAL



Duran Bowl Planter
1 color | 3 sizes
WRP-CT-01 (Pg 46)



Sphera Planter
1 color | 3 sizes
WRP-CT-02 (Pg 46)



Commercial Low Square
1 color | 1 size
WRP-CT-04A (Pg 47)



Commercial Tall Square
1 color | 1 size
WRP-CT-04B (Pg 47)



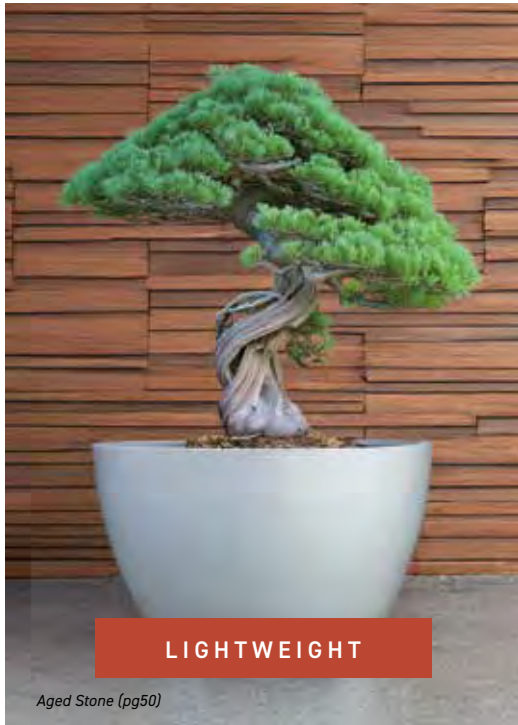
Republic Low Square
1 color | 1 size
WRP-CT-03A (Pg 48)



Republic Square
1 color | 1 size
WRP-CT-03B (Pg 48)



TERRACOTTA



Aged Stone (pg50)



Hydrus Tall Square
3 colors | 1 size
LGP-352 (Pg 52)



Hydra Tall Cone Planter
3 colors | 1 size
LGP-362 (Pg 52)



Domus Planter
3 colors | 1 size
LGP-290 (Pg 50)



Pegasus Planter
2 colors | 2 sizes
LGP-414/ 416 (Pg 60)



Lightweight Metropolitan Square
2 colors | 3 sizes
LGP-13 (Pg 58)



Lightweight Metropolitan Tall Square
2 colors | 3 sizes
LGP-14 (Pg 58)



Lightweight Metropolitan Square
2 colors | 3 sizes
LGP-13 (Pg 58)



Lightweight Metropolitan Tall Square
2 colors | 3 sizes
LGP-14 (Pg 58)



Tall Flaired Square Planter
3 colors | 1 size
LGP-270 (Pg 53)



Flaired Patio Rectangle
3 colors | 1 size
LGP-278 (Pg 53)



Modern Rectangle
3 colors | 1 size
LGP-332 (Pg 54)



Megalos Planter
2 colors | 2 sizes
LGP-080/ 122 (Pg 50)



Pegasus Planter
2 colors | 2 sizes
LGP-414/ 416 (Pg 60)



Hampshire Square
1 color | 1 size
LGP-3505E (Pg 60)



Hydrus Tall Square
3 colors | 1 size
LGP-352 (Pg 52)



Domus Planter
3 colors | 1 size
LGP-290 (Pg 50)



Orion Planter
3 colors | 1 size
LGP-T266 (Pg 56)



Megalos Planter
2 colors | 2 sizes
LGP-080/ 122 (Pg 50)



Hydrus Tall Square
3 colors | 1 size
LGP-352 (Pg 52)



Hydra Tall Cone Planter
3 colors | 1 size
LGP-362 (Pg 52)



Domus Planter
3 colors | 1 size
LGP-290 (Pg 50)



Hydra Tall Cone Planter
3 colors | 1 size
LGP-362 (Pg 52)



Tall Flaired Square Planter
3 colors | 1 size
LGP-270 (Pg 53)



Flaired Patio Rectangle
3 colors | 1 size
LGP-278 (Pg 53)



Modern Rectangle
3 colors | 1 size
LGP-332 (Pg 54)



Lightweight Park Rectangle
2 colors | 2 sizes
LGP-11 (Pg 54)



Tall Flaired Square Planter
3 colors | 1 size
LGP-270 (Pg 53)



Flaired Patio Rectangle
3 colors | 1 size
LGP-278 (Pg 53)



Modern Rectangle
3 colors | 1 size
LGP-332 (Pg 54)



Orion Planter
3 colors | 1 size
LGP-T266 (Pg 56)



Tall Orion Planter
2 colors | 1 size
LGP-T324 (Pg 56)



Lightweight Egg Planter
2 colors | 5 sizes
LGP-12 (Pg 55)



Orion Planter
3 colors | 1 size
LGP-T266 (Pg 56)



Tall Orion Planter
2 colors | 1 size
LGP-T324 (Pg 56)



Lightweight Ontario Bowl
2 colors | 3 sizes
LGP-15 (Pg 57)



Lightweight Contractor Bowl
2 colors | 4 sizes
LGP-16 (Pg 57)



Lightweight Park Rectangle
2 colors | 2 sizes
LGP-11 (Pg 54)



Lightweight Egg Planter
2 colors | 5 sizes
LGP-12 (Pg 55)



Lightweight Ontario Bowl
2 colors | 3 sizes
LGP-15 (Pg 57)



Lightweight Contractor Bowl
2 colors | 4 sizes
LGP-16 (Pg 57)

"Colors are the smiles of nature. When they are extremely smiling, and break forth, we call them flowers."

- Leigh Hunt

TERMS AND CONDITIONS

Glazed Pottery

Jackson Pottery offers a variety of Glazed Earthenware, providing the opportunity to distinguish garden and living areas in a unique and complimentary way. The high-quality glazing keeps absorption lower than with standard terracotta planters. Nevertheless, adverse weather such as rain, hail, and snow can still cause damage to the planter. **This often happens when excess moisture, due to inadequate drainage, builds up inside the planter and freezes, or if standing water accumulates at the base of the planter and freezes. It may be necessary for the product to be elevated, covered, or moved inside during extremely cold weather.**

Terracotta Pottery

Jackson Pottery offers a variety of terracotta selections. Terracotta reveals a natural finish that is timeless and moisture absorbent. Due to the nature of terracotta clay, it can be vulnerable to extreme weather conditions. **It is recommended during extreme weather conditions the product be moved inside or covered.**

Care

Proper care of all planters and outdoor living accessories is recommended to help ensure long term enjoyment. These precautions do not necessarily guarantee that planters left to the elements will survive winter weather. Jackson Pottery is not responsible for damage and discoloration to products due to weather or improper care.

Order Placement

To qualify for a wholesale account with Jackson Pottery, a business "in the trade" must provide Jackson Pottery with a Federal Tax Employer Identification Number (EIN) prior to placing an order. If you are a business "in the trade" that prefers to pay tax, a business license for design, landscaping, or other similar representation may be used to establish an account. Jackson Pottery looks forward to a successful business relationship with you.

Our four order options include:

- **Online:** through our website or partner website
- **Email:** sales@jacksonpottery.com
- **Completing the order form** with a local sales representative or distributor partner
- **Fax:** 800-316-7687

No phone orders. Because we want your order to be accurate, we do not accept "phone in" orders.

\$2,500.00 minimum order - Dealer
\$1,000.00 minimum order - Trade
\$500.00 minimum order - Pick up (Dealer or Trade)

Terms

All initial orders require prepayment. Jackson Pottery accepts Visa, Mastercard, Discover, American Express, and company checks. Stocking Dealers are eligible for terms based on credit worthiness. An application for terms is available. Failure to remit payment according to invoice terms may result in revocation of credit privileges, the use of a collection agency, and/or legal action. **Past due accounts will be assessed a monthly finance charge of 1% of the total balance (12% APR) or a minimum of \$5, whichever is greater.** Unprocessed orders may be held until all balances, including finance charges, are paid in full.

Pricing

Online pricing, catalog or supplement prices, shipping rates, and special promotions are subject to change without notice. Jackson Pottery reserves the right to void and/or alter orders and prices in response to circumstances beyond our control. Jackson Pottery reserves the right to append fuel and freight surcharges in response to extraordinary circumstances beyond the company's control. Hard to reach locations and charges due to freight rescheduling by the customer will incur charges as set forth by the carrier utilized for the transaction. Jackson Pottery will not be held liable for any customer loss of sales due to changes in our prices, or due to circumstances unforeseen or beyond our control. Quotations are honored for 30 days apart from any extreme condition as described above.

Payment Forms

We accept ACH, cashier's checks, all major credit cards, and company checks (subject to a 12-day wait period for all new customers). **We offer an easy-to-use, online portal for secure payments.**



Cancellations

Due to the inherent labor costs and packing material associated with pottery, **a cancellation/restocking fee of 25% will be applied to any order 7 days after submission to Jackson Pottery.** The order need not have shipped to be charged a restocking fee. Freight costs will be charged when applicable. **PLEASE UNPACK YOUR ORDER IMMEDIATELY**, removing all plastic and packing material to inspect goods and preserve the finish. Product received by the customer in good condition is non-refundable after 10 business days.

Backorders

Jackson Pottery fills backorders by request only at a \$500 minimum and can be combined with new orders or shipped by themselves. Backorders may be combined with a new order by customers. Backorders are considered new orders and are subject to standard freight terms.

Shipping & Delivery

Jackson Cast Stone is sold under a separate sales program. We no longer ship Cast Stone and pottery together and do not combine freight terms. Jackson Cast Stone is subject to its own program, terms, and conditions.

Jackson Pottery does its best to inspect, pack, and ship with the utmost care. Each customer is responsible for checking each shipment for damage and shortages. If damage occurs, please denote on an invoice copy and fax (800-316-7687) to Jackson Pottery **within 10 business days** to file a claim or email credits@jacksonpottery.com.

With the exception of periodic, local deliveries in the Dallas-Fort Worth area, Jackson Pottery utilizes 3rd party carriers or LTL trucks to ship to any state, including the above listed. Daily delivery times and notifications on LTL carriers are the sole responsibility of the freight carrier. Alternate shipping methods are available upon request with common carrier or LTL service. **We do not offer "white glove" service, and all items will come palletized unless noted by Jackson Pottery.**

Lift Gate Deliveries

Customers requiring forklift service or who do not have standard height loading docks will be charged an additional fee. In order to avoid delays, please specify on all orders WHEN THE ORDER IS PLACED whether lift gate service is required.

2025 WHOLESALE ORDER FORM

2146 Empire Central, Dallas, TX 75235
 Tel: 214-357-9819 Fax: 214-357-0770

Sales Order _____
 Page _____ of _____
 Date _____

*** Indicates required fields. New customers write "New Customer" in Account Number field below.**

* Account Number _____
 * Buyer _____
 * Bill To _____
 * Address _____

 * City _____ * State _____ * Zip _____
 * Phone _____
 * Email Address _____
 American Express Discover
 Mastercard Visa Card Number _____ Exp _____
 Name On Card _____ State _____ Zip _____

*	Your Facility Has: (check all that apply)	<input type="checkbox"/> Loading Dock	<input type="checkbox"/> Fork Lift	<input type="checkbox"/> Pallet Jack
----------	---	---------------------------------------	------------------------------------	--------------------------------------

Ship To _____
 Address _____
 Address _____
 City _____ State _____ Zip _____
 Contact _____
 Special Instructions _____

 Card Number _____ Exp _____
 State _____ Zip _____

Customer P.O.	Request Ship Date	Cancel Date	Back Order Request <i>(Min. \$1,000 on all B/O)</i>
			<input type="checkbox"/> Yes <input type="checkbox"/> No Back orders are considered new orders and are subject to standard freight terms.
Terms Requested: <input type="checkbox"/> Net 30 <input type="checkbox"/> Prepay <input type="checkbox"/> Fall Dating <input type="checkbox"/> Spring Dating (All new customers prepay first order at time of shipment)			Sales Rep <i>(Office Use Only)</i> Written By <i>(Office Use Only)</i>

\$2,500.00 Minimum Order - Stocking | \$1,000.00 Minimum Order - Trade

Item Number	Qty.	Description	Page No.	Unit Cost	Extended

Shipments are F.O.B. Dallas, Texas. No merchandise returnable without authorization. All claims must be made within 10 business days of receipt of goods. Accounts will be considered overdue after 30 days from invoice date and will be assessed a service charge of 1% per month.

Buyer's Signature _____

For Office Use Only					
Terms	Bill	Ship	Rep	Date	Order No.

Jackson Pottery
2146 Empire Central
Dallas, TX 75235

JOIN US AS WE
CHART NEW TERRITORIES

JACKSON  POTTERY

2146 Empire Central, Dallas, TX 75235
Tel: (214) 357-9819 / Fax: (214) 357-0770
Toll-Free: (877) 533-7687 / Fax: (800) 316-7687
sales@jacksonpottery.com



www.jacksonpottery.com

