



**For more information:**

Central Garden and Pet  
1000 Parkwood Circle, Suite 700  
Atlanta, Georgia 30339

**For all inquiries, please contact us at:**

**CONTROLS ACCOUNT SERVICES**  
1-855-273-7526, OPTION 4

**CONTROLS & FERTILIZER CONSUMER INQUIRIES**  
1-800-265-0761, OPTION 3

**GARDENTECH ACCOUNT SERVICES**  
1-855-273-7526, OPTION 1

**GARDENTECH CONSUMER INQUIRIES**  
1-866-945-5033



**For more information:**

Pennington Seed, Inc.  
P.O. Box 290  
Madison, Georgia 30650

**For all inquiries, please contact us at:**

1-800-285-SEED (7333)

**For additional product information by brand, please visit the following websites:**

[www.gardentech.com](http://www.gardentech.com)

[www.amdro.com](http://www.amdro.com)

[www.pennington.com](http://www.pennington.com)

[www.corrays.com](http://www.corrays.com)

[www.mossout.com](http://www.mossout.com)

[www.imageforweeds.com](http://www.imageforweeds.com)



CENTRAL GARDEN & PET LAWN + GARDEN 2025 PRODUCT CATALOG



# Lawn+Garden

## 2025 PRODUCT CATALOG





# Table of Contents

<b>03</b>	<b><u>GRASS SEED</u></b>		
	Pennington® Smart Seed® .....	05	
	Pennington® The Rebels® .....	10	
	Pennington® Selects .....	11	
	Pennington® Lawn Booster™ .....	14	
	Pennington® Smart Seed® Clover + Grass Mix...15		
<b>17</b>	<b><u>PATCH &amp; REPAIR</u></b>		
	Pennington® Smart Patch .....	18	
	Pennington® Selects .....	20	
<b>21</b>	<b><u>SEEDING ACCESSORIES</u></b>		
	Pennington® .....	22	
<b>23</b>	<b><u>LAWN FERTILIZER/ SOIL AMENDMENTS</u></b>		
	Pennington® .....	24	
	Ironite® .....	26	
	Lilly Miller® .....	27	
	ProCare® .....	29	
<b>31</b>	<b><u>PLANT FERTILIZER</u></b>		
	Pennington® Rejuvenate™ Plant Food.....	32	
	Pennington® Water Soluble All-Purpose Plant Food .....	34	
	Pennington® Liquid Plant Food.....	35	
	Alaska® .....	36	
	Procare® .....	37	
	Lilly Miller® .....	38	
<b>41</b>	<b><u>ROOTING HORMONE</u></b>		
	RootBoost™ .....	42	
<b>43</b>	<b><u>GRASS/WEED CONTROL</u></b>		
	Image® Herbicides.....	44	
<b>51</b>	<b><u>MOSS CONTROL</u></b>		
	Corry's® Moss B Ware® .....	52	
	Lilly Miller® Moss Out!® .....	53	
<b>57</b>	<b><u>FUNGICIDES</u></b>		
	Daconil® .....	58	
<b>59</b>	<b><u>MULTI-PURPOSE CONTROL</u></b>		
	Sevin® .....	60	
<b>63</b>	<b><u>MULTI-INSECT CONTROL</u></b>		
	Sevin® .....	65	
	Amdro Quick Kill® .....	71	
	KnockOut™.....	76	





## 77 TARGETED INSECT CONTROL

### FIRE ANT

Over'n Out!® Advanced .....	78
Amdro® .....	79
KnockOut™ .....	82

### ANT

Amdro® .....	83
--------------	----

### WOOD DAMAGING INSECTS

Amdro Quick Kill® .....	85
-------------------------	----

### TICK

Amdro® .....	86
--------------	----

## 87 SLUG & SNAIL CONTROL

Corry's® .....	88
----------------	----

## 89 ANIMAL & RODENT CONTROL

Amdro® .....	90
--------------	----

## 93 WILDLIFE

Pennington® .....	94
-------------------	----

## 99 FORAGE

Pennington® .....	100
-------------------	-----

## 103 BIRD FEEDERS & HOUSES

Pennington® Pride Bird Feeders.....	104
Pennington® Pride Hummingbird Feeder .....	105
Pennington® Pride Bird Houses.....	106
Cedar Feeders.....	107
Plastic Feeders.....	113
Recycled Feeders.....	114
Metal Bird Feeders .....	115
Hummingbird Feeders.....	116
Bird Houses .....	118
Accessories .....	119

## 121 BIRD FOOD & NECTAR

Pennington® Pride Bird Food .....	122
Bird Food .....	125
Nectar.....	133

## 135 TERRA COTTA

Pennington® Terra Cotta Pottery.....	136
--------------------------------------	-----





CULTIVATING FULLER, HEALTHIER LAWNS

# Grass Seed



• CULTIVATING QUALITY SEED SINCE 1945 •

# PENNINGTON



Pennington provides the finest grass seed you can buy, guaranteed.

## PENNINGTON. THE GRASS IS GREENER.™





**PENNINGTON**  
**SMART SEED**



**WHAT MAKES IT SMART?**  
**Innovation.**

Pennington's NexGen Plant Science Center is the largest private grass seed research facility in the United States. We are leaders in the industry in developing top-performing, water-conserving, sustainable seed.

**PROMOTES HEALTHIER PLANTS**

Pennington's seed technology protects seeds from deadly fungus and ensures better plant growth.

**GUARANTEED TO GROW**

Pennington – cultivating your trust for three generations by providing the finest grass seed you can buy, guaranteed.

**DROUGHT TOLERANT PREMIUM GRASS SEED MIX**

Pennington® cool-season Smart Seed® grasses require up to 30 percent less water than ordinary grass seed. That's year after year, for the life of your lawn.

**A. SMART SEED® SUN & SHADE**

- Top selling Smart Seed® product
- For Fescue, Perennial Rye and Bluegrass Lawns
- Saves up to 30% water year after year vs. ordinary grass seed

SAP	UPC	CS/PK	COVERS UP TO
100543718	0-21496-02277-2	8/3 lb	1,000 sq. ft.
100543719	0-21496-02278-9	4/7 lb	2,330 sq. ft.
100543720	0-21496-02279-6	28/20 lb	6,660 sq. ft.

**B. SMART SEED® SOUTHERN SUN & SHADE**

- Survives in hot, humid and harsh conditions
- For Tall Fescue lawns
- Saves up to 30% water year after year vs. ordinary grass seed

SAP	UPC	CS/PK	COVERS UP TO
100543722	0-21496-02281-9	8/3 lb	750 sq. ft.
100543723	0-21496-02282-6	4/7 lb	1,750 sq. ft.
100543724	0-21496-02283-3	28/20 lb	5,000 sq. ft.



**PENNINGTON**  
**SMART SEED**



**A. SMART SEED® DENSE SHADE**

- For areas getting 2 to 6 hours of daily sun
- Produces a fine bladed, lower maintenance lawn
- Saves up to 30% water year after year vs. ordinary grass seed

SAP	UPC	CS/PK	COVERS UP TO
100543702	0-21496-02261-1	8/3 lb	750 sq. ft.
100543703	0-21496-02262-8	4/7 lb	1,750 sq. ft.

**B. SMART SEED® KENTUCKY BLUEGRASS**

- Produces dense tightly-knit, dark green grass all season long
- Contains self-spreading, heat-tolerant Kentucky Bluegrass
- Saves up to 30% water year after year vs. ordinary grass seed

SAP	UPC	CS/PK	COVERS UP TO
100543705	0-21496-02264-2	8/3 lb	2,000 sq. ft.

**C. SMART SEED® PERENNIAL RYEGRASS**

- Easy to establish with fast germination
- Good durability and traffic tolerance
- Saves up to 30% water year after year vs. ordinary grass seed

SAP	UPC	CS/PK	COVERS UP TO
100543717	0-21496-02276-5	8/3 lb	750 sq. ft.



**PENNINGTON**  
**SMART SEED**

**A**



**B**



## Smart Seed<sup>®</sup> Bermudagrass

Smart Seed<sup>®</sup> Bermudagrass mixes include a temporary, cool-season companion grass that provides stability to the soil and early color, which then fades away as the heat arrives and is crowded out by bermudagrass. You get improved germination and faster establishment – which means 2x the results compared to Bermudagrass alone.\*

\*Based upon % of green cover up to 17 days after planting (as measured on days 6, 10, 13, and 17).  
 Not available in Louisiana

### A. SMART SEED<sup>®</sup> BERMUDAGRASS

- 2x the results and coverage than Bermudagrass alone\*
- Naturally more drought-tolerant than other grass varieties
- Extremely wear-resistant with a deep root system

SAP	UPC	CS/PK	COVERS UP TO
100543734	0-21496-02293-2	10/1.75 lb	1,000 sq. ft.
100543735	0-21496-02294-9	4/8.75 lb	5,000 sq. ft.

Not available in Louisiana

### B. SMART SEED<sup>®</sup> TEXAS BERMUDAGRASS

- 2x the results and coverage than Bermudagrass alone\*
- Naturally more drought-tolerant than other grass varieties
- Extremely wear-resistant with a deep root system

SAP	UPC	CS/PK	COVERS UP TO
100543736	0-21496-02295-6	10/1.75 lb	1,000 sq. ft.
100543737	0-21496-02296-3	4/8.75 lb	5,000 sq. ft.

Not available in Louisiana



PENNINGTON

# SMART SEED

A



B



## A. SMART SEED® NORTHEAST MIX

- Survives summer heat & harsh winters
- Saves up to 30% water year after year vs. ordinary grass seed

SAP	UPC	CS/PK	COVERS UP TO
100543706	0-21496-02265-9	8/3 lb	1,000 sq. ft.
100543707	0-21496-02266-6	4/7 lb	2,330 sq. ft.
100543708	0-21496-02267-3	28/20 lb	6,660 sq. ft.

## B. SMART SEED® PACIFIC NORTHWEST MIX

- Withstands cool, wet weather all year long
- Saves up to 30% water year after year vs. ordinary grass seed

SAP	UPC	CS/PK	COVERS UP TO
100543712	0-21496-02271-0	8/3 lb	750 sq. ft.
100543713	0-21496-02272-7	4/7 lb	1,750 sq. ft.

C



D



## C. SMART SEED® PENNSYLVANIA STATE MIX

- Survives summer heat & harsh winters
- Saves up to 30% water year after year vs. ordinary grass seed

SAP	UPC	CS/PK	COVERS UP TO
100543714	0-21496-02273-4	8/3 lb	1,000 sq. ft.
100543715	0-21496-02274-1	4/7 lb	2,330 sq. ft.
100543716	0-21496-02275-8	28/20 lb	6,660 sq. ft.

## D. SMART SEED® OHIO STATE MIX

- Survives summer heat & harsh winters
- Saves up to 30% water year after year vs. ordinary grass seed

SAP	UPC	CS/PK	COVERS UP TO
100543709	0-21496-02268-0	8/3 lb	1,000 sq. ft.
100543710	0-21496-02269-7	4/7 lb	2,330 sq. ft.
100543711	0-21496-02270-3	28/20 lb	6,660 sq. ft.



**PENNINGTON**  
**Smart Seed**<sup>®</sup>  
 Professional Grass Seed **PRO**



## Smart Seed<sup>®</sup> Pro

Pennington<sup>®</sup> Smart Seed<sup>®</sup> Pro is a composite of fine textured cultivars for use in landscapes, home lawns, parks, athletic fields and golf courses. These products are treated with Seed Fuel to promote faster coverage for premium turf performance. To seed like a pro, opt for Pennington<sup>®</sup> Smart Seed<sup>®</sup> Pro.

### A. SMART SEED<sup>®</sup> PRO TRI FESCUE

- Exceptional wear tolerance
- Superior dark green color
- Improved disease resistance
- Outstanding drought tolerance

SAP	UPC	CS/PK	COVERS UP TO
100551536	0-21496-02843-9	6/5 LB	1,000 sq. ft.
100551537	0-21496-03067-8	32/10 LB	2,000 sq. ft.
100550177	0-21496-22670-5	20/50 LB	10,000 sq. ft.

### B. SMART SEED<sup>®</sup> PRO SUN & SHADE

- Exceptional wear tolerance
- Superior dark green color
- Improved disease resistance
- Outstanding drought tolerance

SAP	UPC	CS/PK	COVERS UP TO
100551585	0-21496-03089-0	20/50 LB	10,000 sq. ft.





### A. THE REBELS® TALL FESCUE BLEND

- Produces up to 40% more roots than ordinary grasses
- Bred to grow a darker green than other Tall Fescues
- Contains improved heat, drought and disease resistant varieties\*

\* compared to ordinary seed

SAP	UPC	CS/PK	COVERS UP TO
100543728	0-21496-02287-1	8/3 lb	750 sq. ft.
100543729	0-21496-02288-8	4/7 lb	1,750 sq. ft.
100543730	0-21496-02289-5	28/20 lb	5,000 sq. ft.
100543731	0-21496-02290-1	24/40 lb	10,000 sq. ft.

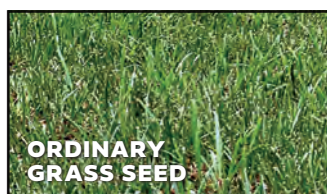
### B. THE REBELS® SHADY LAWN MIX

- For areas getting 2 to 6 hours of daily sun
- Bred to grow a darker green than other Tall Fescues
- Contains improved heat, drought and disease resistant varieties\*

SAP	UPC	CS/PK	COVERS UP TO
100543725	0-21496-02284-0	8/3 lb	750 sq. ft.
100543726	0-21496-02285-7	4/7 lb	1,750 sq. ft.
100543727	0-21496-02286-4	28/20 lb	5,000 sq. ft.

## The Rebels Brand®.

The roots of The Rebels Brand® date back to 1979, when turf researchers at Rutgers University released a revolutionary new grass. Known as 'Rebel,' it was the very first example of what's now known as turf-type tall fescue. Compared to traditional tall fescues, Rebel offered lower growth, finer texture, darker color and denser turf — plus the drought tolerance that makes tall fescue a favorite. Generations later, with up to 40% more roots than ordinary grasses\*, The Rebels Brand® Extended Root seed



For illustrative purposes.

varieties represent the best turf-type tall fescue on the market. With roots like these, it's only natural that The Rebels Brand® carries the Pennington name.

\* Root development estimates based on plant breeding techniques and scientific research results. Results may vary depending on environmental conditions and management practices. Data on file. Published in management practices. Data on file. Published in Crop Sci. 44:17 70-17 75 (2004).



# GRASS SEED

A



B



## A. CONTRACTORS MIX

- All purpose, professional grade grass seed mix
- Provides quick, dense grass coverage
- Formulated and mixed specifically for your region

ITEM#/SAP	UPC	CS/PK	COVERS UP TO
(C)/100520260	0-21496-01475-3	4/7 lb	1,400 sq. ft.
(C)/100516637	0-21496-29747-7	24/20 lb	4,000 sq. ft.
(C)/100520262	0-21496-01476-0	40 lb	8,000 sq. ft.
(N)/100520605	0-21496-29832-0	24/20 lb	4,000 sq. ft.
(N)/100528346	0-21496-01784-6	24/40 lb	8,000 sq. ft.
(S)/100520261	0-21496-01477-7	4/7 lb	1,400 sq. ft.
(S)/100520263	0-21496-01478-4	24/20 lb	4,000 sq. ft.
(S)/100544318	0-21496-02329-8	24/40lb	8,000 sq. ft.

C = Central mix  
N = Northern mix  
S = Southern mix

## B. KENTUCKY 31 TALL FESCUE

- Economical, low maintenance grass
- Good heat tolerance
- Penkoted® technology for seedling protection
- Easy to establish and tolerates both wear and drought

ITEM#/SAP	UPC	CS/PK	COVERS UP TO
100516048	0-21496-01427-2	8/3 lb	600 sq. ft.
100516051	0-21496-01429-6	4/7 lb	1,400 sq. ft.
100543701	0-21496-02260-4	28/20 lb	4,000 sq. ft.
100537715	0-21496-02064-8	40 lb	8,000 sq. ft.
100516056	0-21496-01434-0	50 lb	10,000 sq. ft.





# GRASS SEED

A



B



## A. ZENITH ZOYSIA

- Combination of seed and mulch
- Continuously self-repairs
- Improved cold tolerance and stays green longer into the fall season\*

\* Compared to other warm season grasses

**SAP** 100532366    **UPC** 0-21496-27755-4    **CS/PK** 6/5 lb    **COVERS UP TO** 1,000 sq. ft.

## B. CENTIPEDE

- Combination of seed and mulch
- Thrives in sunny to lightly shaded areas
- Dense, slow-growing grass
- Very easy to maintain

**SAP** 100532365    **UPC** 0-21496-23655-1    **CS/PK** 6/5 lb    **COVERS UP TO** 2,000 sq. ft.



## Generations of Trust.

At Pennington, our relationship with the grass seed we sell starts long before the seed is grown. While most grass seed companies buy their seed on the open market, we work directly with a network of dedicated growers to bring you the finest grass seed known. Built on decades of trust and integrity, our relationships with seed growers and their families span multiple generations. We're the only major grass seed company that works directly with farmers to ensure their success and ours. We know our seed and the farmers who grow it. From field to final product, that's the Pennington way.



# GRASS SEED



## A. ARGENTINE BAHIAGRASS

- Attractive grass with finer texture and darker color than Pensacola Bahiagrass
- For the Southern Coastal Plain and Gulf Coast areas
- Coarse bladed grass

SAP	UPC	CS/PK	COVERS UP TO
100543687	0-21496-02256-7	8/3 lb	600 sq. ft.
100543688	0-21496-02257-4	4/7 lb	1,400 sq. ft.



## B. PENSACOLA BAHIAGRASS

- Better winter hardiness and turf quality than common Bahiagrass
- For sunny, coastal areas
- Coarse bladed grass

SAP	UPC	CS/PK	COVERS UP TO
100543689	0-21496-02258-1	8/3 lb	600 sq. ft.
100543700	0-21496-02259-8	4/7 lb	1,400 sq. ft.



## C. ANNUAL RYEGRASS

- Establishes quickly
- Good for temporary erosion control
- Ideal for winter overseeding of warm-season lawns

SAP	UPC	CS/PK	COVERS UP TO
100082632	0-21496-00515-7	4/10 lb	2,000 sq. ft.
100082633	0-21496-00556-0	25 lb	5,000 sq. ft.
100082644	0-21496-00557-7	50 lb	10,000 sq. ft.



## D. BERMUDAGRASS

- Produces a thick, aggressively self-spreading grass
- Extremely wear-resistant
- Naturally more drought-tolerant than other grass varieties

SAP	UPC	CS/PK	COVERS UP TO
100532463	0-21496-00546-1	15/1 lb	1,000 sq. ft.
100532363	0-21496-00548-5	6/5 lb	5,000 sq. ft.
100523123	0-21496-37028-6	15 lb	10,000 sq. ft.





# LAWN BOOSTER™



## A. LAWN BOOSTER™ TALL FESCUE

- Comprehensive lawn care solution
- Revitalizes soil with essential plant nutrients
- Fertilizer feeds up to 3 months
- Contains premium Smart Seed® grass seed varieties

SAP	UPC	CS/PK	COVERS UP TO
100547362	0-21496-02749-4	4/9.6 lb	1,200 sq. ft.
100547363	0-21496-02750-0	24/35 lb	4,375 sq. ft.

## B. LAWN BOOSTER™ SUN & SHADE

- Comprehensive lawn care solution
- Revitalizes soil with essential plant nutrients
- Fertilizer feeds up to 3 months
- Contains premium Smart Seed® grass seed varieties

SAP	UPC	CS/PK	COVERS UP TO
100547360*	0-21496-02747-0	4/9.6 lb	1,200 sq. ft.
100547361*	0-21496-02748-7	24/35 lb	4,375 sq. ft.

\* CA version also available



## Greener, Thicker, Healthier Grass.

### GREENER

Lawn Booster™ products contain Smart Seed® grass seed, which yields a significantly darker green color than ordinary seed. Combine this with a premium fertilizer and Lawn Booster™ products will give you the deep green lawn you desire.

### THICKER

Lawn Booster™ grass seed includes soil enhancers, which work to naturally loosen your soil. This promotes the ideal conditions for fertilizer to feed nutrients to the seed, creating stronger roots and thicker coverage versus ordinary seed.

### HEALTHIER

Pet urine or lawn disease can create poor soil conditions. Lawn Booster™ products include microbes that help to restore the health of your soil.



# SMART SEED®

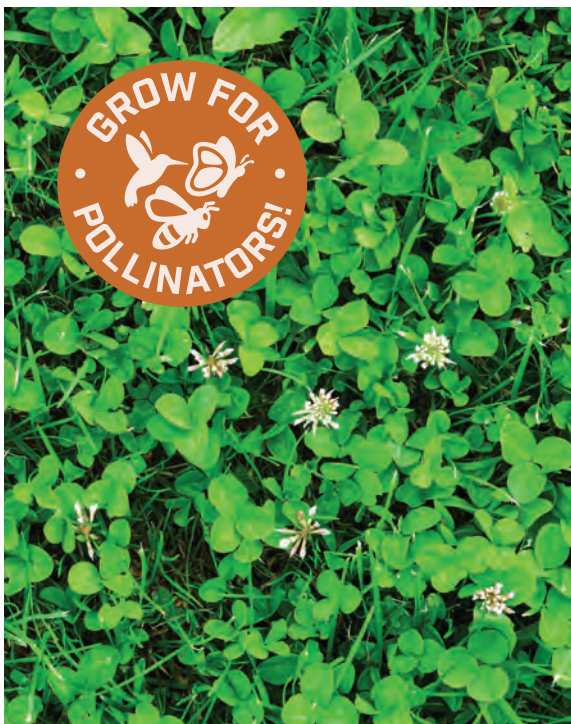
A



## A. SMART SEED® CLOVER + GRASS MIX

- Pennington® Smart Seed® turf grass with self-fertilizing Durana clover
- For areas with 4-6 hours of sun
- Establishes quickly and lasts for years – even on slopes and hills

SAP	UPC	CS/PK	COVERS UP TO
100547419	0-21496-02805-7	4/7 lb	1,400 sq. ft.
100551463	0-21496-03042-5	20 lb	4,000 sq ft



## Quick establishing, low maintenance lawn.

Pennington® Smart Seed® Clover + Grass seed combines self-sustaining Durana White Clover and water-conserving Smart Seed® grass varieties to create a self-fertilizing lawn that even grows on slopes and hills. You'll enjoy an attractive lawn that needs less water, less fertilizer and less maintenance – it supports pollinators, too!









REPAIRING LAWNS TO THEIR FULL BEAUTY – SIMPLIFIED

# Patch & Repair



**PENNINGTON**  
**SMART PATCH**  
 BARE SPOT REPAIR FOR LAWNS



**A. SMART PATCH DENSE SHADE**

**B. SMART PATCH SUN & SHADE**

ITEM#/SAP	UPC	CS/PK	COVERS UP TO
100545644	0-21496-02399-1	4/5 lb	100 sq.ft.
100545666	0-21496-02411-0	4/10 lb	200 sq.ft.

ITEM#/SAP	UPC	CS/PK	COVERS UP TO
100545642*	0-21496-02397-7	4/5 lb	100 sq.ft.
100545664*	0-21496-02409-7	4/10 lb	200 sq.ft.
100545894*	0-21496-02427-1	30/30 lb	600 sq.ft.

\* CA version also available



**C. SMART PATCH BERMUDAGRASS**

**D. SMART PATCH TALL FESCUE**

ITEM#/SAP	UPC	CS/PK	COVERS UP TO
100545645	0-21496-02400-4	4/5 lb	100 sq.ft.
100545667	0-21496-02412-7	4/10 lb	200 sq.ft.
100545896	0-21496-02429-5	30/30 lb	600 sq.ft.

ITEM#/SAP	UPC	CS/PK	COVERS UP TO
100545643*	0-21496-02398-4	4/5 lb	100 sq.ft.
100545665*	0-21496-02410-3	4/10 lb	200 sq.ft.
100545895*	0-21496-02428-8	30/30 lb	600 sq.ft.

\* CA version also available

**WHY IS IT SMART?**  
**Ingenuity.**

With Pennington® Smart Patch, you don't need to know why your lawn has thin, bare or brown spots. Smart Patch eliminates the guesswork and frustration of lawn repairs.

**REPAIRS BARE SPOTS CAUSED BY PETS & LAWN DISEASE**

Pet urine or lawn disease can create poor soil conditions, making it extremely difficult to grow grass in certain areas of your lawn. Smart Patch includes microbials that improve the health of your soil, making your lawn whole again.

**GROWS ON SLOPES AND HILLS**

Nothing is more frustrating than a rainstorm washing away all of your new seed. Smart Patch includes a water-soluble tackifier that acts as a blanket for your seed, even protecting it on slopes and hills against the rain.

**SEE GROWTH IN AS LITTLE AS 5 DAYS**

Smart Patch is worth the wait, but you won't have to! Thanks to our patented American Ryegrass, featured in Smart Patch Sun & Shade, Tall Fescue and Dense Shade, you'll see growth in as little as five days\*.

\* Smart Patch Bermuda growth can be seen in as little as seven days

\*\* Under ideal growing conditions.

**PENNINGTON**  
**SMART PATCH**  
 BARE SPOT REPAIR FOR LAWNS



**A. SMART PATCH ZENITH ZOYSIA**

- Repairs bare spots caused by pets and lawn disease
- Durable and grows in mixed conditions
- Grass seed, fertilizer and proprietary wood mulch combination

ITEM#/SAP	UPC	CS/PK	COVERS UP TO
100550681	0-21496-02970-2	6/5 lb	100 sq.ft.

**A. SMART PATCH CENTIPEDE**

- Repairs bare spots caused by pets and lawn disease
- Very easy to maintain
- Grass seed, fertilizer and proprietary wood mulch combination

ITEM#/SAP	UPC	CS/PK	COVERS UP TO
100551464	0-21496-03043-2	6/5 lb	200 sq.ft.
100551604	0-21496-03080-7	4/10 lb	400 sq.ft.





A



### A. BARE SPOT REPAIR

- Ideal for patching bare spots and thinning areas
- Establishes rapidly
- Specially formulated for your region

ITEM#/SAP	UPC	CS/PK	COVERS UP TO
(C)/100536813	0-21496-02016-7	12/1lb	100 sq. ft.
(N)/100536812	0-21496-02015-0	12/1lb	100 sq. ft.



## Successful bare spot repairs call for high-quality grass seed.

If you're looking to fill bare spots and thin areas of your lawn, Pennington® Bare Spot Repair is your answer. Pennington® Bare Spot Repair is a regional mixture that establishes rapidly to patch bare spots, pet damaged areas or to seed small new lawns. This grass seed mix establishes quickly and is guaranteed to make your lawn whole again.



A roll of green fibrous turf matting is shown on a bed of dark soil with scattered seeds. The matting is a vibrant green color and has a textured, fibrous appearance. It is rolled up, with the top edge of the roll visible. The soil is dark brown and has many small, light-colored seeds scattered across it. The overall scene is a close-up shot, focusing on the matting and the soil.

PROTECTING YOUR LAWN FROM THE VERY BEGINNING

# Seeding Accessories





A



### A. SEED STARTER MAT

- Helps hold grass seed in place once applied
- Ideal for use when applying seed on slopes and hills
- Biodegradable mats are easier to use than traditional wheat straw without the mess
- Helps prevent weeds

<b>SAP</b>	<b>UPC</b>	<b>CS/PK</b>	<b>COVERS UP TO</b>
100083888	0-21496-00051-0	12/cs	39' x 18'



## Help establish your lawn with ease.

Pennington Seed® Seed Starter Mats are made from natural wood fibers which help hold the proper amount of moisture around the seed for superior germination and are ideal for use on slopes or hills to help hold the seed in place, preventing erosion. Pennington's Seed Starter Mats work better than straw and other seed blankets. They degrade without the mess or cleanup and help prevent weeds while the grass is establishing.





ENHANCING YOUR GROWING POWER FOR A BREATHTAKING LAWN

# Lawn Fertilizer/ Soil Amendments





## One application and done for a season with Pennington® Full Season™ lawn products!

Our Full Season™ Lawn Fertilizer 32-0-5 revitalizes your soil with beneficial plant nutrients and keeps your lawn thriving, while our Full Season™ Weed & Feed with Crabgrass Control 25-0-8 and Full Season™ Southern Weed & Feed 25-0-14 controls weeds including Dandelion, Clover and Crabgrass. With 5% iron for deep greening, you'll enjoy a lush green lawn all season long.

### A. PENNINGTON® FULL SEASON™+ LAWN FERTILIZER 32-0-5

- One application and done for a season†
- Contains natural beneficial microorganisms that revitalize soil and help your lawn thrive
- Contains 5% iron for deep greening

ITEM#	UPC	CS/PK	COVERS UP TO
100550297	0-21496-02930-6	3/11.2 lb	4,000 sq.ft.
100550299	0-21496-02930-6	40/11.2 lb	4,000 sq.ft.
100550854	0-21496-02924-5	35/33.6 lb	12,000 sq.ft.

† Contains polymer coated urea that provides controlled release of nitrogen up to 4 months

### B. PENNINGTON® FULL SEASON™+ WEED & FEED WITH CRABGRASS CONTROL 25-0-8

- One application and done for a season†
- Kills & prevents Dandelion, Clover and Crabgrass!
- Contains 5% iron for deep greening
- Season long feeding!

ITEM#	UPC	CS/PK	COVERS UP TO
100550306	0-21496-02928-3	3/14.4 lb	4,000 sq.ft.
100550308	0-21496-02928-3	30/14.4 lb	4,000 sq.ft.
100550855	0-21496-02929-0	35/43.2 lb	12,000 sq.ft.

† Contains polymer coated urea that slowly releases nitrogen up to 4 months

### C. PENNINGTON® FULL SEASON™+ SOUTHERN WEED & FEED 25-0-14



- One application and done for a season†
- Kills dandelion, dollarweed, clover and more than 100 other listed major lawn weeds
- For use on Centipedegrass, St. Augustinegrass, Bermudagrass\* and other listed grasses
- Quick greening and extended feeding

ITEM#	UPC	CS/PK	COVERS UP TO
100551227	0-21496-03023-4	4/8 lb	2,500 sq.ft.
100551189	0-21496-03015-9	3/12.8 lb	4,000 sq.ft.
100551200	0-21496-03015-9	30/12.8 lb	4,000 sq.ft.
100551202	0-21496-03016-6	42/25.6 lb	8,000 sq.ft.

† Contains polymer coated urea that provides controlled release of nitrogen up to 4 months

\* Common bermudagrass and hybrid bermudagrass



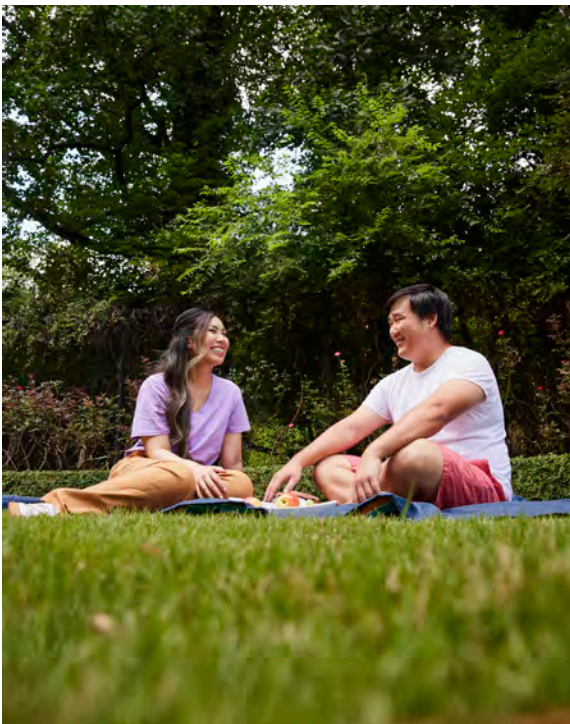
A



### A. PENNINGTON® EPSOM SALT PLANT NUTRIENT

- Corrects yellowing leaves when caused by magnesium and/or sulfur deficiencies
- For vigorous lawns, flowers, plants, vegetables, and trees

ITEM#	UPC	CS/PK	COVERS UP TO
100524480	0-21496-28100-1	6/7 lb	2,900 sq.ft.



## Encourage a better lawn.

Gardeners have been using Epsom salts as a plant nutrient for years because it contains both magnesium and sulfur, which are crucial to plant growth. Pennington® Epsom Salt Plant Nutrient can be used on a variety of plants and makes it easy to provide nutrients to your plants. Epsom salt helps to encourage plant growth to produce excellent yields for lawns, flowers, plants, vegetables and trees, and is very popular among rose growers.



# IRONITE®

A



B



C



## Nothing Greens and Grows Like Ironite®

Ironite® brand iron-based mineral supplement and fertilizers provide the answer you need to restore pale, yellow lawns and plants to rich, vibrant green.

Specially formulated to overcome pale color caused by nutrient deficiencies, Ironite® supplement and fertilizers help you maintain a beautiful green lawn and gardens all season long.

### A. IRONITE® PLUS 12-10-10 PLANT FOOD Granules

- For gardens, shrubs, roses, trees and flowers
- Contains essential secondary and micronutrients for strong roots and lush green growth

ITEM#	UPC	CS/PK	COVERS UP TO
100099053	0-21496-01504-0	12/3 lb	750 sq.ft.

### B. IRONITE® LIQUID LAWN & GARDEN SPRAY 7-0-1 Ready-to-Spray

- Starts working immediately! For lawns, shrubs, trees & flowers
- Non-staining and non-burning
- Greens up quickly

ITEM#	UPC	CS/PK	COVERS UP TO
100525937	0-21496-01649-8	4/1 quart	5,000 sq.ft.

### C. IRONITE® MINERAL SUPPLEMENT 1-0-0 Granules

- For a deep green lawn
- No excessive growth – less mowing\*
- Won't stress lawn in summer heat\*
- For use on lawns, flowers, shrubs, vegetables and trees

ITEM#	UPC	CS/PK	COVERS UP TO
100544882	0-21496-02378-6	8/3 lb	1,000 sq.ft.
100544883	0-21496-02380-9	40/15 lb	5,000 sq.ft.
100544884	0-21496-02382-3	45/30 lb	10,000 sq.ft.

\* When used as directed at the label application rate 3 lbs./1,000 sq.ft. will not burn or damage plants, shrubs, or grass.

\* vs. high nitrogen containing lawn fertilizers that promote lawn growth





### A. LILLY MILLER® 16-16-16 LAWN & GARDEN FOOD ALL PURPOSE

- A traditional multi-purpose fertilizer
- Concentrated, fast-acting ingredients

ITEM#	UPC	CS/PK
100099132	0-70624-00116-5	100/20 lb
100099133	0-70624-00118-9	50/40 lb



## Get the plant food your lawn and garden need.

Help your plants flourish by using Lilly Miller® Lawn & Garden Food All Purpose 16-16-16. It features a concentrated, fast-acting combination of ingredients that can be used for shrubs, flowers, trees and vegetables. The traditional formula is now available to home gardeners to provide the nourishment your lawn and gardens need. Contains Phosphorus which is important for root growth, flowering, and Potassium for plant hardiness.





A



### A. LILLY MILLER® SUPER SWEET™

- Fast-acting granular lime, reduces soil acidity

ITEM#	UPC	CS/PK	COVERS UP TO
100099184	0-70624-00914-7	80/25 lb	2,000 sq. ft.





### A. PROCARE® NATURAL 4-3-0

- Slow Release Fertilizer
- Contains Iron for Deep Greening
- Beautiful Gardens & Lush Lawns
- Vibrant Flowers, Shrubs & Trees

<b>ITEM#</b>	<b>UPC</b>	<b>CS/PK</b>
100538359	0-21496-02093-8	55/36 lb



### B. PROCARE® CRABGRASS & WEED PREVENTER 10M

- Provides up to 6 months of crabgrass control
- Stops crabgrass before it starts
- Prevents up to 40 weeds and grasses
- Apply in early spring and late fall

<b>ITEM#</b>	<b>UPC</b>	<b>CS/PK</b>
100540027	0-21496-02131-7	50/20 lb



### C. PROCARE® LAWN WEED CONTROL 10M

- Kills Dandelion, Clovers, and other major lawn weeds
- Kills 250 + weeds
- Controls a wide spectrum of broadleaf weeds
- Kills the weeds, Not the lawn

<b>ITEM#</b>	<b>UPC</b>	<b>CS/PK</b>
100540028	0-21496-02132-4	50/28 lb





A



**A. PROCARE® 42LB 15M  
PHOSPHORUS FREE  
LAWN FERTILIZER 28-0-4**

- Contains 2% Iron
- Feeds up to 3 Months
- 50 Bags on a pallet

<b>ITEM#</b>	<b>UPC</b>	<b>CS/PK</b>
100527163	0-21496-01781-5	50/42 lb

B



**B. PROCARE® 39LB 15M  
PHOSPHORUS FREE  
WEED AND FEED 25-0-4**

- Contains Trimec® Ester
- Feeds up to 3 Months
- 50 Bags on a pallet

<b>ITEM#</b>	<b>UPC</b>	<b>CS/PK</b>
100527164	0-21496-01782-2	50/39 lb

C



**C. PROCARE® 32LB 10M  
PHOSPHORUS FREE  
SOUTHERN WEED & FEED  
FOR CENTIPEDE & ST.  
AUGUSTINE LAWNS 18-0-18**

- Contains Penoxsulam and Sulfentrazone
- Feeds up to 3 Months
- 50 Bags on a pallet

<b>ITEM#</b>	<b>UPC</b>	<b>CS/PK</b>
100527165	0-21496-01783-9	50/32 lb



ENRICHING & FORTIFYING YOUR GARDEN

# Plant Fertilizer





**A. PENNINGTON® REJUVENATE™ PLANT FOOD ALL PURPOSE 4-4-4**

- Blend of Organic and Natural ingredients that revitalize soil and help plants thrive
- Includes beneficial microorganisms and essential plant nutrients that may strengthen plants against stress and drought
- Grows bigger, more bountiful fruits and beautiful blooms vs. unfed plants
- Feeds up to 4 months

<b>ITEM#</b>	<b>UPC</b>	<b>CS/PK</b>
100551112	0-21496-02495-0	8/4 lb

**B. PENNINGTON® REJUVENATE™ PLANT FOOD TOMATO & VEGETABLE 4-5-4**

- Blend of Organic and Natural ingredients that revitalize soil and help plants thrive
- Includes beneficial microorganisms and essential plant nutrients that may strengthen plants against stress and drought
- Grows bigger, more bountiful tomatoes and vegetables vs. unfed plants
- Feeds up to 4 months

<b>ITEM#</b>	<b>UPC</b>	<b>CS/PK</b>
100551113	0-21496-02496-7	8/4 lb



A



**A. PENNINGTON® REJUVENATE™ PLANT FOOD EVERGREEN & AZALEA 4-3-3**

- Blend of Organic and Natural ingredients that revitalize soil and help plants thrive
- Includes beneficial microorganisms and essential plant nutrients that may strengthen plants against stress and drought
- Grows bigger, more beautiful blooms vs. unfed plants for acid-loving plants such as hydrangeas, hollies, azaleas, camellias and rhododendrons
- Feeds up to 4 months

**ITEM#** 100551114    **UPC** 0-21496-02497-4    **CS/PK** 8/4 lb

B



**B. PENNINGTON® REJUVENATE™ PLANT FOOD CITRUS & AVOCADO 5-3-4**

- Blend of Organic and Natural ingredients that revitalize soil and help plants thrive
- Includes beneficial microorganisms and essential plant nutrients that may strengthen plants against stress and drought
- Grows bigger, more bountiful fruits and stronger trees vs. unfed plants
- Feeds up to 4 months

**ITEM#** 100551115    **UPC** 0-21496-02498-1    **CS/PK** 8/4 lb

C



**C. PENNINGTON® REJUVENATE™ PLANT FOOD ROSE & FLOWER 4-6-3**

- Blend of Organic and Natural ingredients that revitalize soil and help plants thrive
- Includes beneficial microorganisms and essential plant nutrients that may strengthen plants against stress and drought
- Grows bigger, more beautiful blooms vs. unfed plants
- Feeds up to 4 months

**ITEM#** 100551116    **UPC** 0-21496-02499-8    **CS/PK** 8/4 lb



A



**NEW ITEM**

### A. PENNINGTON® REJUVENATE™ PLANT FOOD ALL-PURPOSE 4-4-4 SHAKER BOTTLE

- All purpose plant food in an easy-to-use shaker bottle for bigger, more bountiful fruits and blooms versus unfed
- Blend of organic and natural ingredients that revitalize soil and help plants thrive
- Quick and slow release nitrogen that feeds for up to 4 months

<b>ITEM#</b>	<b>UPC</b>	<b>CS/PK</b>
100551320	0-21496-03028-9	6/1.37 lb

B



**NEW ITEM**

### B. PENNINGTON® REJUVENATE™ PLANT FOOD TOMATO & VEGETABLE 4-5-4 SHAKER BOTTLE

- Tomato and vegetable plant food in an easy-to-use shaker bottle for bigger, more bountiful tomatoes and vegetables versus unfed
- Blend of organic and natural ingredients that revitalize soil and help plants thrive
- Quick and slow release nitrogen that feeds for up to 4 months

<b>ITEM#</b>	<b>UPC</b>	<b>CS/PK</b>
100551321	0-21496-03029-6	6/1.37 lb

C



**NEW ITEM**

### C. PENNINGTON® WATER SOLUBLE ALL-PURPOSE PLANT FOOD 20-10-20

- Water soluble plant food mix for bigger, more bountiful fruits and blooms vs. unfed
- Wide opening of container enables mess-free and safe scooping without the product touching hands
- Measuring scoop included

<b>ITEM#</b>	<b>UPC</b>	<b>CS/PK</b>
100551319	0-21496-03030-2	8/1.5 lb



### A. PENNINGTON® ALL-PURPOSE PLANT FOOD 2-3-2

#### Concentrate

- Easy dosing – 1 squeeze = 1 dose
- Safe for all plants when used according to label dilution
- Grow bigger plants with more blooms & fruits versus unfed

**ITEM#** 100550385  
**UPC** 0-21496-02937-5  
**CS/PK** 6/1 quart

### B. PENNINGTON® PLANT STARTER

#### Concentrate

- Easy dosing – 1 squeeze = 1 dose
- Helps seedlings and transplants thrive
- Safe for all plants when used according to label dilution

**ITEM#** 100550384  
**UPC** 0-21496-02936-8  
**CS/PK** 6/1 quart



## Take your garden to new heights with Pennington's powerful plant care duo!

Our Liquid All-Purpose Plant Food helps grow bigger and stronger plants compared to unfed plants, while our Plant Starter helps seedlings and transplants thrive for seamless relocations. Nurture your roots with easy dosing – one squeeze = one dose. These essential products are safe for all plants\*. Witness the transformative effects on your garden's vitality.

\*When used according to label dilution





## Fortify and Enrich Your Garden – Naturally.

Alaska® branded fertilizers are derived from ocean fish and are highly effective alternatives to synthetic fertilizers that grow delicious fruits and vegetables and vibrant flowers. Nutrient rich fish fertilizers have been used for centuries to enrich soil and to enhance the strength and vigor of plants.

### A. ALASKA® FISH FERTILIZER 5-1-1

#### Concentrate

- Use on all indoor & outdoor plants
- OMRI Listed® & California registered Organic Input Material
- Will not burn

ITEM#	UPC	CS/PK
100545840	0-22671-40000-2	12/Quart
100545842	0-22671-60000-6	4/1 gal.
9301205	0-22671-12059-7	36/5 gal.

### B. ALASKA® MORBLOOM 0-10-10

#### Concentrate

- For abundant, colorful flowers
- Promotes vigorous root growth
- Use on all flowering plants
- Made with fish

ITEM#	UPC	CS/PK
100099251	0-22671-70000-3	12/Quart
100099252	0-22671-70500-8	4/1 gal.
100099472	0-22671-70505-3	36/5 gal.



**A. PROCARE® ALL-PURPOSE WATER SOLUBLE 24-8-16 PLANT FOOD**

- Instant Feeding for roses, flowers, vegetables, houseplants, shrubs & trees
- Feeds Through Leaves & Roots For Fast Results
- For use in watering cans & spray feeders

<b>ITEM#</b>	<b>UPC</b>	<b>CS/PK</b>
100540344	0-21496-02156-0	8/5 lb

**B. PROCARE® INDOOR & OUTDOOR ALL PURPOSE 19-6-12 PLANT FOOD**

- Feeds for up to 6 months
- Continuous Feeding
- Ideal for Indoor Plants, Flower Gardens, Shrubs and Trees
- Guaranteed Not to Burn\*

\*When used as directed

<b>ITEM#</b>	<b>UPC</b>	<b>CS/PK</b>
100540343	0-21496-02155-3	12/2 lb





A



**A. LILLY MILLER®  
ALL PURPOSE PLANTING  
& GROWING FOOD 10-10-10**

- Slow-release for lush steady growth
- Fortified with essential plant minerals

ITEM#	UPC	CS/PK
100528749	0-70624-00506-4	12/4 lb

**ALSO AVAILABLE IN DISPLAYS**

ITEM#	UPC	CS/PK
100099122	0-70624-00502-6	120/16 lb

B



**B. LILLY MILLER®  
BONE MEAL 6-12-0**

- Naturally rich in Nitrogen and Phosphorus
- Traditional plant food for bulbs

ITEM#	UPC	CS/PK
100528814	0-70624-01006-8	12/4 lb

**ALSO AVAILABLE IN DISPLAYS**

ITEM#	UPC	CS/PK
100099125	0-70624-01005-1	72/15 lb Stud Pallet

C



**C. LILLY MILLER®  
BULB & BLOOM FOOD 4-10-10**

- Phosphorus and Potassium for bright, vigorous blooms
- Slow-release feeding

ITEM#	UPC	CS/PK
100528815	0-70624-00758-7	12/4 lb



## Nourish your plants with high-quality nutrients.

Lilly Miller® fertilizers are a proprietary combination of natural and traditional plant food ingredients, feeding plants with quickly available nutrients and natural slow release nutrients for extended feeding.



A



**A. LILLY MILLER® MORCROP TOMATO & VEGETABLE FOOD 5-10-10**

- Specifically formulated with Phosphorus and Potassium for bountiful tomatoes and vegetables
- Fortified with essential plant minerals

ITEM#	UPC	CS/PK
100528846	0-70624-00756-3	12/4 lb

**ALSO AVAILABLE IN DISPLAYS**

ITEM#	UPC	CS/PK
100099128	0-70624-00525-5	120/16 lb

B



**B. LILLY MILLER® RHODODENDRON, EVERGREEN & AZALEA FOOD 10-5-4**

- For all acid-loving plants, shrubs and evergreens
- Slow-release feeding

ITEM#	UPC	CS/PK
100528748	0-70624-00100-4	12/4 lb

**ALSO AVAILABLE IN DISPLAYS**

ITEM#	UPC	CS/PK
100504893	0-70624-00101-1	36/16 lb

C



**C. LILLY MILLER® ROSE & FLOWER FOOD 5-8-4**

- For lush plants and fragrant blooms
- Slow-release feeding

ITEM#	UPC	CS/PK
100528816	0-70624-00706-8	12/4 lb

**ALSO AVAILABLE IN DISPLAYS**

ITEM#	UPC	CS/PK
100099131	0-70624-00702-0	120/16 lb

D



**D. LILLY MILLER® CITRUS & AVOCADO FOOD 10-6-4**

- Formulated for lush trees and delicious fruit
- Fortified with essential plant minerals

ITEM#	UPC	CS/PK
100528845	0-70624-01010-5	12/4 lb

**ALSO AVAILABLE IN DISPLAYS**

ITEM#	UPC	CS/PK
100099127	0-70624-01020-4	120/16 lb









TRANSFORMING CUTTINGS INTO STRONG, HEALTHY PLANTS

# Rooting Hormone





A



2 oz.

## A. ROOTBOOST™ ROOTING HORMONE

### Powder

Active: 0.10% Indole-3-butyric Acid

- Grow New Plants from Cuttings!
- As simple as Cut, Dip and Plant!
- Contains Hormodin® 1 – a root inducing substance
- Propagate Roses, Hydrangeas, Gardenias, Rhododendrons, Azaleas, and many other popular home plants

ITEM#	UPC	CS/PK
100538120	6-13499-07805-6	12/2 oz.



## Transform cuttings into strong, healthy plants.

RootBoost™ Rooting Hormone is a general purpose powder that stimulates root development from stem cuttings, encourages uniform root growth, and results in vigorous, well-rooted new plants. The rooting hormone, Hormodin® 1, facilitates plant propagation from the stem cuttings. Use to propagate roses, gardenias, hydrangeas, azaleas and many more plants listed on the label.

Simply snip the stems above the node, dip the bottom of the stem cutting in water, then swirl the stem in the powder, shake off excess powder, plant the stem in a potting mix medium inside a container, then cover with a plastic bag to create a mini-greenhouse. Place in indirect sunlight to achieve the best results.





TARGETING WEEDS TO RESTORE THE SPLENDOR OF YOUR SPACE

# Grass/Weed Control







## Handle your toughest weed issues with Image<sup>®</sup> Herbicides.

Consumers everywhere battle with weeds in their yard. Regardless of the type of weed, we offer a variety of herbicides formulated to target and treat the problem.

The Image<sup>®</sup> line of herbicides handles some of the toughest consumer lawn weed issues including crabgrass, sedges, *Poa annua* and broadleaf weeds without killing regional turf types.

### A. IMAGE<sup>®</sup> HERBICIDES CRABGRASS, NUTSEGE<sup>+</sup> & WEED KILLER FOR LAWNS CONCENTRATE

#### Concentrate

Actives: 1.6% Sulfentrazone  
5.0% Quinclorac

- Kills nutsedge<sup>+</sup>, crabgrass, dandelion, and clover
- Kills even tough weeds, roots & all!
- Won't Harm Lawns<sup>\*</sup>

<sup>\*</sup> Not for use on purple nutsedge in California when used as directed

ITEM#	UPC	CS/PK	TREATS
100551404	8-13576-00691-4	6/24 fl.oz. Conc.	6,000 sq.ft.

### B. IMAGE<sup>®</sup> HERBICIDES CRABGRASS, NUTSEGE<sup>+</sup> & WEED KILLER FOR LAWNS READY-TO-SPRAY

#### Ready-To-Spray

Actives: 1.6% Sulfentrazone  
5.0% Quinclorac

- Kills nutsedge<sup>+</sup>, crabgrass, dandelion, and clover
- Kills even tough weeds, roots & all!
- Won't Harm Lawns<sup>\*</sup>

<sup>\*</sup> Not for use on purple nutsedge in California when used as directed

ITEM#	UPC	CS/PK	TREATS
100551403	8-13576-00690-7	6/24 fl.oz. RTS	6,000 sq.ft.



## A. IMAGE<sup>®</sup> HERBICIDES NUTSEDGE KILLER FOR SOUTHERN LAWNS CONCENTRATE

### Concentrate

Active: 3.3% Ammonium Salt of Imazaquin

- Kills Yellow & Purple Nutsedge, Crabgrass, Dandelion, and Dollarweed
- Kills warm & cold season weeds
- Can be used on established Bermudagrass, St. Augustinegrass, Buffalograss, Centipedegrass, Zoysiagrass, and around selected landscape ornamentals and groundcovers

**ITEM#** 100551409    **UPC** 8-13576-00590-0    **CS/PK** 6/24 fl.oz. Conc.

**TREATS** 6,000 sq.ft.

## B. IMAGE<sup>®</sup> HERBICIDES NUTSEDGE KILLER FOR SOUTHERN LAWNS READY-TO-SPRAY

### Ready-To-Spray

Active: 3.3% Ammonium Salt of Imazaquin

- Kills Yellow & Purple Nutsedge, Crabgrass, Dandelion, and Dollarweed
- Kills warm & cold season weeds
- Can be used on established Bermudagrass, St. Augustinegrass, Buffalograss, Centipedegrass, Zoysiagrass, and around selected landscape ornamentals and groundcovers

**ITEM#** 100551405    **UPC** 8-13576-00600-6    **CS/PK** 6/1 quart RTS

**TREATS** 8,000 sq.ft.





## A. IMAGE<sup>®</sup> HERBICIDES WEED KILLER FOR SOUTHERN LAWN'S CONCENTRATE

### Concentrate

Actives: 0.14% Penoxsulam  
 0.14% Sulfentrazone  
 1.46% 2,4-D, dimethylamine salt  
 0.41% Dicamba, dimethylamine salt

- Kills major broadleaf weeds, roots and all
- Won't harm lawns\*
- For use on Bermuda, St. Augustinegrass, Zoysia, and Centipedegrass

\*when used as directed

ITEM#	UPC	CS/PK	COVERS UP TO
100551435	8-13576-00426-2	6/1 quart Conc.	6,670 sq.ft.

## B. IMAGE<sup>®</sup> HERBICIDES WEED KILLER FOR SOUTHERN LAWN'S READY-TO-SPRAY

### Ready-To-Spray

Actives: 0.14% Penoxsulam  
 0.14% Sulfentrazone  
 1.46% 2,4-D, dimethylamine salt  
 0.41% Dicamba, dimethylamine salt

- Kills major broadleaf weeds, roots and all
- Won't harm lawns\*
- For use on Bermuda, St. Augustinegrass, Zoysia, and Centipedegrass

\*when used as directed

ITEM#	UPC	CS/PK	COVERS UP TO
100551433	8-13576-00425-5	6/1 quart RTS	6,670 sq.ft.



## A. IMAGE<sup>®</sup> HERBICIDES CRABGRASS & WEED KILLER FOR LAWNS CONCENTRATE

### Concentrate

Actives: 4.78% MCPA, dimethylamine salt  
1.56% Quinclorac  
0.43% Dicamba, dimethylamine salt

- Kills even the tough weeds, roots & all!
- Kills crabgrass, chickweed, dandelion, and clover
- Won't harm lawns when used as directed

**ITEM#** 100551432    **UPC** 8-13576-00411-8    **CS/PK** 6/1 quart Conc.    **TREATS** 4,000 sq.ft.

## B. IMAGE<sup>®</sup> HERBICIDES CRABGRASS & WEED KILLER FOR LAWNS READY-TO-SPRAY

### Ready-To-Spray

Actives: 4.78% MCPA, dimethylamine salt  
1.56% Quinclorac  
0.43% Dicamba, dimethylamine salt

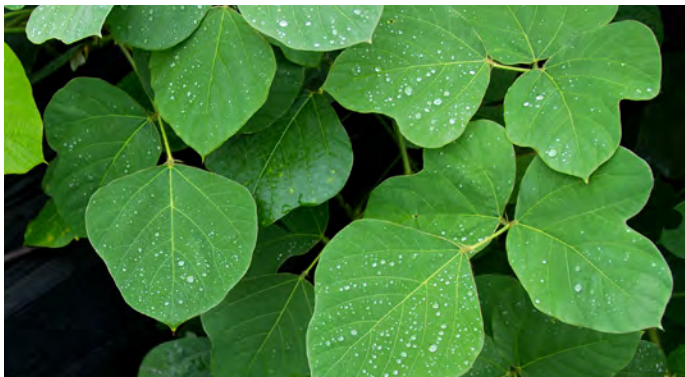
- Kills even the tough weeds, roots & all!
- Kills crabgrass, chickweed, dandelion, and clover
- Won't harm lawns when used as directed

**ITEM#** 100551431    **UPC** 8-13576-00410-1    **CS/PK** 6/1 quart RTS    **TREATS** 4,000 sq.ft.





A



### A. IMAGE® HERBICIDES BRUSH & VINE KILLER CONCENTRATE

#### Concentrate

Active: 8.0% Triclopyr, triethylamine salt

- Kills completely – stumps and roots won't grow
- Kills blackberry, kudzu, poison oak, poison ivy, sumac, mesquite, scotch broom, horsetail rush and most other woody plants
- You may replant in treated area in just 1 month
- Kills tough brush & vines - roots & all!

ITEM#  
100551436

UPC  
0-70624-25024-2

CS/PK  
6/1 quart Conc.

COVERS  
4,000 sq.ft.

## Kill tough vines and brush at the root with no regrowth.

With Image® Herbicide Brush and Vine Killer, effectively kill tough brush and vines including Kudzu, poison ivy/oak, and blackberry.

A



## A. IMAGE<sup>®</sup> HERBICIDES CASORON<sup>®</sup> WEED + GRASS PREVENTER GRANULES

Granules

Active: 2% Dichlobenil

- For use around roses, listed shrubs, and trees
- Prevents weeds and grasses

ITEM#	UPC	CS/PK	TREATS OVER
100551471	0-70624-61009-1	54/8 lb Granules	1,700 sq.ft.
100551470	0-70624-61009-1	64/8 lb Granules	1,700 sq.ft.

B



## B. IMAGE<sup>®</sup> HERBICIDES NOXALL<sup>®</sup> WEED + GRASS KILLER GRANULES

Granules

Active: 2% Dichlobenil

- Prevents regrowth for up to one year
- Kills existing vegetation, grasses & weeds

ITEM#	UPC	CS/PK	COVERS UP TO
100551473	0-70624-60009-2	204/10 lb Granules	1,000 sq.ft.

ALSO AVAILABLE IN DISPLAYS

ITEM#	UPC	CS/PK	COVERS UP TO
100551472	0-70624-60009-2	30/10 lb Mini Pallet	1,000 sq.ft.









KILLING MOSS WITH EASY-TO-USE FORMULAS

# Moss Control



CORRY'S THE ORIGINAL  
**MOSS B WARE**

A



**A. CORRY'S® MOSS B WARE® FOR ROOFS AND WALKS**

**Granules**

Active: 99% Zinc Sulfate Monohydrate

- Safe for roofs, patios & walkways
- Shake Moss B Ware® granules directly from canister or dissolve in water for spray

ITEM#	UPC	CS/PK	COVERS UP TO
100099020	0-10919-41483-6	12/3 lb Granules	3,000 sq. ft.
100543592	0-10919-00671-0	6/4lb Granules	4,000 sq. ft.
100550397	0-10919-00673-4	4/10lb Granules	10,000 sq.ft.

# Moss OUT!

A



B



## A. MOSS OUT!® FOR LAWN

### Concentrate

Active: 35% Ferric Sulfate, Anhydrous

- Kills lawn moss quickly - works in hours!
- Liquid iron gives superior results

ITEM#	UPC	CS/PK	COVERS
100099156	0-70624-00765-5	4/gallon Conc.	2,000 sq.ft.

## B. MOSS OUT!® FOR LAWN

### Ready-To-Spray

Active: 35% Ferric Sulfate, Anhydrous

- Kills lawn moss quickly - works in hours!
- Liquid iron gives superior results

ITEM#	UPC	CS/PK	COVERS
100503873	0-70624-61524-9	6/Quart RTS	500 sq.ft.



# The perfect solution to kill moss.

Consumers battle with moss in their lawns and gardens, as well as on walkways, decks, roofs and other structures. In most climates, moss grows vigorously during the cool, wet spring and fall seasons. Central Garden & Pet offers a variety of products formulated to target and treat the problem while protecting surrounding surfaces.

Moss is a significant challenge in the Pacific Northwest, and the problem is expanding outside that region, particularly along the East Coast. The Moss Out!® line of products kills moss on lawns, roofs, walks and structures with easy-to-use liquid and granule formulas.



# Moss OUT!

A



B



## A. MOSS OUT!® FOR LAWNS

Granules

Active: 32% Ferrous Sulfate Monohydrate

- See results in hours
- Turns lawns a deep green

ITEM#	UPC	CS/PK	TREATS UP TO
100099164	0-70624-11515-2	60/20 lb Granules	5,000 sq.ft.
100517153	0-70624-00128-8	25/40 lb Granules	10,000 sq.ft.

## B. MOSS OUT!® PLUS FERTILIZER FOR LAWNS 20-0-5

Granules

Active: 32% Ferrous Sulfate Monohydrate

- Phosphorus free
- Develops thick, deep green turf to discourage moss growth
- Kills lawn moss quickly

ITEM#	UPC	CS/PK	TREATS UP TO
100508946	0-70624-02115-6	60/20 lb Granules	5,000 sq.ft.
100508948	0-70624-00127-1	25/40 lb Granules	10,000 sq.ft.

# Moss OUT!

A



## A. MOSS OUT!® SPOT TREATER FOR LAWNS & FLOWER BEDS

Shaker Canister

Active: 32% Ferrous Sulfate Monohydrate

- Easy to grip canister
- Kills lawn moss quickly
- See results in hours
- With 10% Iron
- Turns lawns a deep green

ITEM#	UPC	CS/PK	TREATS UP TO
100543551	0-70624-00106-6	6/5 lb Shaker Canister	1,250 sq.ft.





A



### A. MOSS OUT!® FOR ROOFS AND STRUCTURES

Granules

Active: 99% Zinc Sulfate Monohydrate

- Exclusive micro-granule formula
- Use on roofs, patios, sidewalks, brick and unpainted cement

ITEM#	UPC	CS/PK	COVERS UP TO
100099153	0-70624-10615-0	8/6 lb Granules	6,000 sq.ft.

B



### B. MOSS OUT!® ROOFS AND WALKS

Concentrate

Active: 22% Ammoniated Soap of Fatty Acids

- Non-staining formula can be used on roofs, walks, decks and patios
- Kills moss quickly! See results in hours

ITEM#	UPC	CS/PK	TREATS UP TO
100503874	0-70624-10315-9	6/27 fl. oz. Conc.	500 sq.ft.
100099149	0-70624-10495-8	6/54 fl. oz. Conc.	1,000 sq.ft.

C



### C. MOSS OUT!® ROOFS AND WALKS

Ready-To-Spray

Active: 22% Ammoniated Soap of Fatty Acids

- Non-staining formula can be used on roofs, walks, decks and patios
- Kills moss quickly! See results in hours

ITEM#	UPC	CS/PK	TREATS UP TO
100503872	0-70624-30919-3	6/27 fl. oz. RTS	500 sq.ft.



PROTECTING PLANTS FROM FUNGAL DISEASE

# Fungicides





1 quart

B



16 fl. oz.

### A. DACONIL® FUNGICIDE

#### Ready-To-Use

Active: 0.087% Chlorothalonil

- Controls/stops/prevents a broad spectrum of listed plant diseases
- Controls leaf spots, rust blights, fruit rots and mildews
- Easy and ready to use
- For use on flowers, vegetables, shrubs, fruit and shade trees

ITEM# 100536523    UPC 6-13499-02102-1    CS/PK 6/1 quart

### B. DACONIL® FUNGICIDE

#### Concentrate

Active: 29.6% Chlorothalonil

- Controls/stops/prevents a broad spectrum of listed plant diseases
- Controls leaf spots, rust blights, fruit rots and mildews
- Easy to use measuring cap
- For use on vegetables, fruits, flowers, shrubs and trees
- Concentrate makes up to 64 gallons of diluted spray

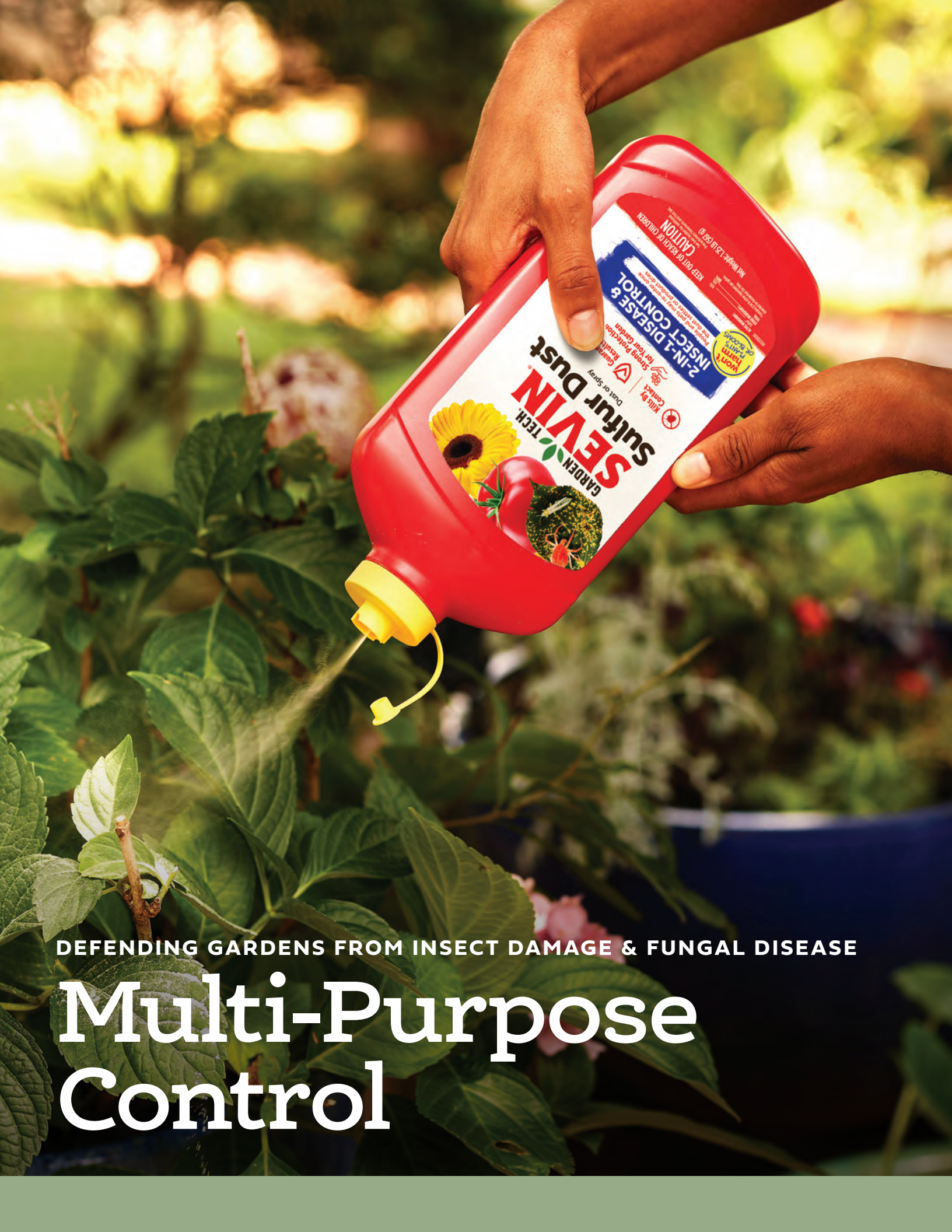
ITEM# 100536524    UPC 6-13499-02105-2    CS/PK 6/16 fl.oz.



## 3-Way Control: Controls, Stops and Prevents.

For more than 35 years, Daconil® fungicide has helped gardeners stop, control and prevent common plant fungal diseases. These easy to use products can be used to treat your flowers, vegetables, fruits, shrubs and trees with rain-proof protection you can trust.





DEFENDING GARDENS FROM INSECT DAMAGE & FUNGAL DISEASE

# Multi-Purpose Control



# GARDEN TECH. SEVIN®



## 2-in-1 disease and insect control.

When you're not sure if the damage is a disease or pest, leave the guess work to Sevin® Sulfur Dust! This 2-in-1 product kill pests by contact and controls listed fungal diseases. This product controls over 45 insects and diseases on listed plants, making it the go-to solution when the culprit for plant damage is unknown. Can be used as a dust or spray.

### A. SEVIN® SULFUR DUST

Dust or Spray

Active: 90% Sulfur

- Protect your plants from damaging pests and harmful fungal diseases
- Won't harm plants or blooms
- Guaranteed results or your money back
- Kills by contact – chewing and sucking insects
- Kills thrips, mites, red spider and many more listed pests
- Simply dust or mix with water and spray
- Apply early or at first signs of insect or plant damage
- People and pets may re-enter once the dust settles or product dries

<b>ITEM#</b>	<b>UPC</b>	<b>CS/PK</b>
100547227	6-13499-01053-7	6/1.25 lb

# GARDEN TECH. SEVIN®

A



## A. SEVIN® 3-IN-1 INSECT, MITE & DISEASE CONTROL FLOWER & SHRUB

### Ready to Spray

Actives: 1.45% Propiconazole  
0.08% Lambda-cyhalothrin

- Prevents and kills diseases and insects in landscapes
- Rain proof- won't wash away
- Fast Acting
- Protects for up to 2 weeks against diseases

ITEM#	UPC	CS/PK
100550344	6-13499-01082-7	6/1 quart



## 3-in-1 Ready to Spray.

The Sevin® 3-in-1 Insect, Mite & Disease Control Flower & Shrub Ready To Spray works immediately to protect home landscapes and flowers from damaging listed insects and diseases. This rain-proof formula prevents diseases and kills insects simultaneously. It's also easy to use - simply attach the garden hose and it's ready to spray.





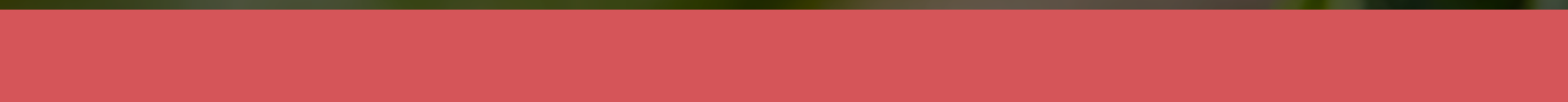






PROTECTING YOUR SPACES FROM INSECT PESTS

# Multi-Insect Control





GARDEN  TECH  
**SEVIN**

*PLANT a LOVE  
for Gardening!*



**PROTECT YOUR  
VEGETABLES, LAWN,  
FLOWERS & GARDEN**

**FROM DAMAGING PESTS**



# GARDEN TECH. SEVIN®



## A. SEVIN® GARDEN PERIMETER INSECT KILLER

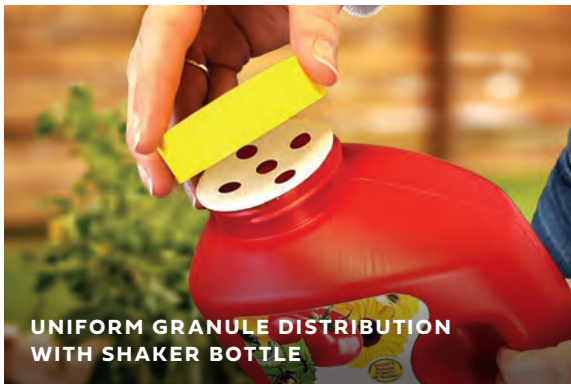
### Granules

Actives: 0.029% Zeta-Cypermethrin  
0.115% Bifenthrin

- Protect your garden from damaging pests
- Kills by contact
- Kills above and below the surface
- Won't harm plants or blooms\*
- One application – 3 months control

\* when used as directed

ITEM#	UPC	CS/PK
100550343	6-13499-01081-0	4/3 lb



UNIFORM GRANULE DISTRIBUTION  
WITH SHAKER BOTTLE



COMFORTABLE GRIP HANDLE  
FOR EASY APPLICATION

## Sevin® Garden Perimeter.

With a single application, the Sevin® Garden Perimeter Insect Killer kills over 100+ listed pests by contact and will keep garden perimeters protected for 3 months. This product is formulated for fruits and vegetable gardens, ornamental plants and shrub, flower and ground covers. The specially designed lid and bottle makes shaking out the granules easy.



# GARDEN TECH. SEVIN®

A



1 lb

B



3 lb

## A & B. SEVIN® INSECT KILLER DUST

### Ready To Use

Active: 0.1% Bifenthrin

- Protect your flowers and lawn from listed damaging pest
- Won't harm plants or blooms\*
- Guaranteed results or your money back
- Kills by contact - over 150 listed insects
- Kills ants, Japanese beetles, whiteflies, aphids and many more pests
- Ready to use - simply shake to apply
- Apply early or at first signs of insect damage
- People and pets can return to treated area once dust has settled

\* When used as directed

ITEM#	UPC	CS/PK
100550409	6-13499-01040-7	6/1 lb.
100550432	6-13499-01041-4	6/3 lb.

### ALSO AVAILABLE IN DISPLAYS

ITEM#	UPC	CS/PK
100550678	0-06-13499-01071-1	60/1 lb. and 24/3 lb. Qtr Pallet



## The Trusted Garden Dust.

Are you concerned of insects attacking your garden? No need to worry, use Sevin® Dust - it kills over 150 pests by contact. Simply shake the bottle and apply. Use this dust to control existing pests in your lawn or garden. Sevin® provides excellent protection for your plants and garden.

# GARDEN TECH. SEVIN®



10 lb

20 lb



## Kills pests above and below the surface.

When needing help with larger areas, Sevin® Insect Killer Lawn Granules is ready for the task!

Protecting your lawn and garden from more than 100 damaging pests above and below the surface, Sevin® Insect Killer Lawn Granules can be used as a preventative application or to control existing pests in your yard.

### A. SEVIN® INSECT KILLER

#### Lawn Granules

Actives: 0.029% Zeta-Cypermethrin  
0.115% Bifenthrin

- Protect your lawn, fruits and vegetables from listed damaging pests
- Works above and below the surface
- Guaranteed results or your money back
- Kills by contact – over 100 listed insects
- Lasts 3 months – kills ants, ticks, and other garden insects
- Easy-to-use – spread over lawn or affected area
- Apply early or at first signs of insect damage
- People and pets can return to treated area once dust has settled and watered in treated area is dry
- How much to use: 1-4 lbs per 1,000 sq.ft.

ITEM#	UPC	CS/PK	TREATS UP TO
100547215	6-13499-01019-3	4/10 lb	10,000 sq.ft.
100547216	6-13499-01021-6	3/20 lb	20,000 sq.ft.

#### ALSO AVAILABLE IN DISPLAYS

ITEM#	UPC	CS/PK	TREATS UP TO
100547217	6-13499-01019-3	36/10 lb Pallet	10,000 sq.ft.
100547211	6-13499-01021-6	30/20 lb Stud Pallet	20,000 sq.ft.
100547218	6-13499-01021-6	21/20 lb Pallet	20,000 sq.ft.



# GARDEN TECH. SEVIN®



1 quart

16 fl. oz.

1 gal.



## Protection for up to 3 months.

Defend your garden and flowers from more than 500 listed pests with Sevin® Insect Killer Concentrate! Including an easy-to-use measuring cap, you can measure just the right amount of concentrate for the job. Use this to kill and control unwanted insects in ornamental and edible gardens, lawn and around your home. This liquid is highly effective and fast acting.

### A. SEVIN® INSECT KILLER

#### Concentrate

Active: 0.35% Zeta-Cypermethrin

- Won't harm your plants or blooms - when used as directed
- Protect your garden and flowers from listed damaging pests
- Guaranteed results or your money back
- Kills by contact – over 500 listed insects
- Lasts 3 months – except fire ants, fleas, ticks, and mosquitoes
- Easy-to-use – mix with water and spray
- Apply early or at first signs of insect damage
- People and pets can return to treated area once spray dries

ITEM#	UPC	CS/PK	TREATS UP TO
100547212	6-13499-01014-8	6/16 fl.oz.	1,000 sq.ft. of lawn
100547213	6-13499-01015-5	6/1 quart	2,000 sq.ft. of lawn
100547214	6-13499-01016-2	4/1 gal.	8,000 sq.ft. of lawn

# GARDEN TECH. SEVIN®



1 quart

## A. SEVIN® INSECT KILLER

### Ready To Spray

Active: 0.35% Zeta-Cypermethrin

- Won't harm your plants or blooms – when used as directed
- Protect your garden and flowers from listed damaging pests
- Guaranteed results or your money back
- Kills by contact – over 500 listed insects
- Lasts 3 months\*
- Easy-to-use – attach hose, turn on water and spray
- Apply early or at first signs of insect damage
- People and pets can return to treated area once spray dries

\* Except fire ants, fleas, ticks, and mosquitoes

ITEM#	UPC	CS/PK	TREATS
100547209	6-13499-01006-3	6/1 quart	2,000 sq.ft. of lawn

### ALSO AVAILABLE IN DISPLAYS

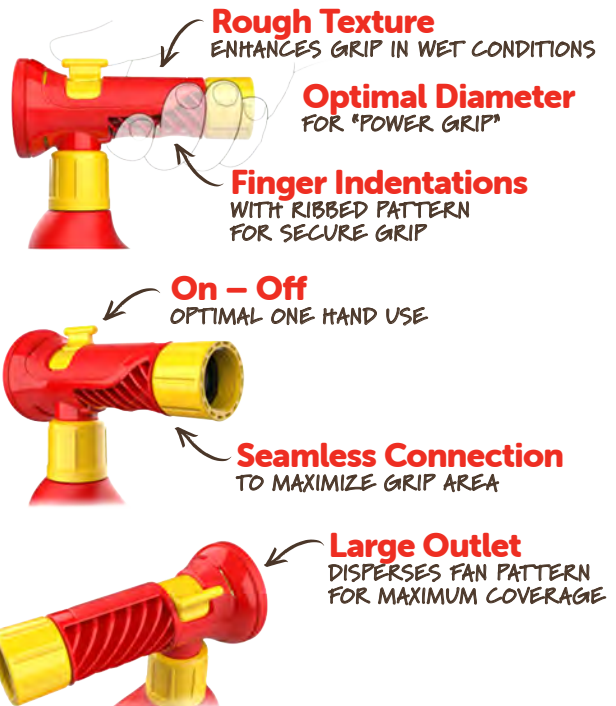
ITEM#	UPC	CS/PK
100547573	0-06-13499-01070-4	RTU 36/1 quart and RTS 42/1 quart Qtr Pallet



## Kills & Controls.

Don't fret about insects attacking your garden. Sevin® Insect Killer Ready to Spray kills more than 500 insect pests by contact and keeps protecting for up to 3 months\*!

Use to kill and control unwanted insects in ornamental and edible gardens, lawn, and around your home. This spray is highly effective and works fast.





# GARDEN TECH. SEVIN®



1.33 gal. Power Sprayer

1 quart

1 gal.



## Simply shake & spray.

Have a bug free garden! Sevin® Ready to Use<sub>2</sub> is specially formulated to protect gardens and outdoor plants. Simply shake well and spray to kill more than 700 insect pests on contact – within minutes. The Sevin® Ready to Use spray is highly effective and fast acting.

### A. SEVIN® INSECT KILLER

Ready To Use<sub>2</sub>

Active: 0.002% Lambda-Cyhalothrin

- Protect your roses and edibles from listed damaging pests
- Won't harm plants or blooms – when use as directed
- Guaranteed results or your money back
- Kills on contact – over 700 listed insects
- Kills ants', Japanese beetles, whiteflies, aphids and many more pests
- Ready to use – simply shake and spray
- Apply early or at first signs of insect damage
- People and pets may re-enter treated area after spray dries

\* Allegheny, Argentine, Black carpenter, Cornfield, Field, Florida Carpenter, Harvester, Honey, Pavement, Southern, Sugar, Nuisance.

ITEM#	UPC	CS/PK
100547232	6-13499-01058-2	6/1 quart
100547234	6-13499-01061-2	4/1 gal.
100547236	6-13499-01062-9	2/1.33gal.

**KILLS BY CONTACT**



**SERIOUS SOLUTIONS  
FOR YOUR TOUGHEST PEST PROBLEMS\***

**AMDRO  
QUICK  
KILL**

\* Consult label for complete list of pests  
Ampro Quick Kill is a registered trademark of Central Garden & Pet Company.





A



### A. AMDRO QUICK KILL® INSECT KILLER FOR HOME PERIMETER

#### Granules

Actives: 0.029% Zeta-Cypermethrin  
0.115% Bifenthrin

- Kills insects by contact
- Keeps on killing for 3 months
- Kills home invading insects

ITEM#	UPC	CS/PK
100550460	8-13576-00409-5	8/2 lb



## Kill Bugs Outside So They Can't Come Inside.

Treating home-invading pests inside doesn't address the real problem. Instead, use Amdro Quick Kill® Insect Killer for Home Perimeter outside – it creates a barrier to keep over 80 listed insects away all season. This premium product is formulated on sand, which releases the active ingredients more quickly than common peanut hulls, so it provides fast results you can count on.



A



10 lb.



20 lb.

**A. AMDRO QUICK KILL® BRAND LAWN INSECT KILLER**

**Granules**

Active: 0.2% Bifenthrin

- Creates a 6 month barrier
- Keeps bugs from coming inside

ITEM#	UPC	CS/PK	TREATS UP TO
100551420	8-13576-00688-4	30/10 lb Special Pallet	16,500 sq. ft.
100551421	8-13576-00689-1	20/20 lb Special Pallet	33,000 sq. ft.



**Get back to enjoying your yard in no time.**

Amdro Quick Kill® Brand Lawn Insect Killer Granules is a deep-reaching granular product that kills listed surface and sub-surface insects. Spread it over your entire lawn to kill listed pests in just 24 hours and keep them away for up to 6 months.





## Confidently reclaim your outdoor space.

Amdro Quick Kill® Insect Killer For Lawn & Landscape is an exclusive liquid formula that kills over 500 listed insects and lasts up to 3 months\*.

### A. AMDRO QUICK KILL® INSECT KILLER FOR LAWN & LANDSCAPE

Ready to Spray

Active: 0.35% Zeta-Cypermethrin

- Kills over 500 insects
- Kills by contact
- Lasts up to 3 months\*

\*Except fire ants, fleas, ticks, and mosquitoes

ITEM#	UPC	CS/PK	TREATS UP TO
100550456	8-13576-00686-0	6/1 quart RTS	4,267 sq. ft.

### B. AMDRO QUICK KILL® INSECT KILLER FOR LAWN & LANDSCAPE

Concentrate

Active: 0.35% Zeta-Cypermethrin

- Kills over 500 insects
- Kills by contact
- Lasts up to 3 months\*

\*Except fire ants, fleas, ticks, and mosquitoes

ITEM#	UPC	CS/PK	TREATS UP TO
100550457	8-13576-00687-7	6/1 quart Conc.	32,000 sq. ft.



A



### A. AMDRO QUICK KILL® ANT & SPIDER KILLER SHAKER BAG

#### Granules

Active: 0.115% Bifenthrin

- Kills up to 100 listed insects
- Works for up to 3 months
- Creates a bug barrier around your home
- For use on lawns, ornamentals, home perimeter and flower gardens
- Resealable easy-to-use shaker bag

ITEM#  
100545849

UPC  
8-13576-00486-6

CS/PK  
6/3 lb

TREATS UP TO  
3,000 sq. ft.



# KnockOut™

A



## A. KNOCKOUT™ ANT, FLEA AND TICK KILLER<sup>®</sup> GRANULES

Active: 0.1% Bifenthrin

- KnockOut™ Ant, Flea & Tick Killer<sup>®</sup> Granules kills insects in lawns and landscapes
- Contains a deep-reaching formula which also kills grubs and mole crickets

ITEM#	UPC	CS/PK	TREATS UP TO
342031	0-21496-00131-9	5/10 lb	8,300 sq.ft.
100544650	0-21496-00131-9	60/10 lb	8,300 sq.ft.



## Control insects in your lawn and landscapes.

KnockOut™ Ant, Flea, and Tick Killer<sup>®</sup> Granules kills bugs in lawns, landscapes, and vegetable and ornamental gardens. Its deep-reaching formula works both above and below the surface of the soil. In addition to treating ants, fleas, and ticks, KnockOut™ Ant, Flea, and Tick Killer<sup>®</sup> also kills grubs, mole crickets, earwigs, spiders, centipedes, grasshoppers and other listed insects.





FOCUSED SOLUTIONS TO CONTROL PESTS INDOOR AND OUT

# Targeted Insect Control



# GARDENTECH. OVER'N'OUT!®



11.5 lb

23 lb



## A. OVER'N'OUT!® ADVANCED FIRE ANT KILLER

### Granules

Actives: 0.05% Zeta-Cypermethrin  
0.2% Bifenthrin

- Fast acting – kills fire ant mounds in 15 minutes
- One application – 6 month control
- Kills mounds and the Queen
- Guaranteed fire ant control
- Starts killing immediately by contact
- Kills, controls, and protects for up to 6 months

ITEM#	UPC	CS/PK	COVERS UP TO
100515674	6-13499-08011-0	4/11.5 lb	5,000 sq. ft.
100515681	6-13499-08023-3	3/23 lb	10,000 sq. ft.

### ALSO AVAILABLE IN DISPLAYS

ITEM#	UPC	CS/PK	COVERS UP TO
100524398	6-13499-08011-0	36/11.5 lb Pallet	5,000 sq. ft.



A



5 lb



## Expert recommended two-step method.

### STEP ONE

First, apply Amdro® Fire Ant Killer for Lawns to your lawn as a broadcast treatment.

### A. AMDRO® FIRE ANT KILLER FOR LAWNS

#### Granules

Actives: 0.0360% Hydramethylnon  
0.0172% (S)-Methoprene

- Provides season long control
- Prevents new mounds
- Kills the queen

ITEM#	UPC	CS/PK	TREATS UP TO
100550821	8-13576-00461-3	3/5 lb	10,000 sq.ft.

#### ALSO AVAILABLE IN DISPLAYS

ITEM#	UPC	CS/PK	TREATS UP TO
100550451	8-13576-00461-3	36/5 lb Special Pallet	10,000 sq.ft.





A



6 oz.



1 lb



2 lb



## Expert recommended two-step method.

### STEP TWO

Second, treat any mounds that pop up with Amdro® Fire Ant Killer for Mounds.

#### A. AMDRO® FIRE ANT KILLER FOR MOUNDS

##### Granules

Active: 0.73% Hydramethylnon

- Kills the queen
- Destroys the mound
- Starts to kill ants immediately

ITEM#	UPC	CS/PK
100550853	8-13576-00404-0	12/6 oz. Granules
100550443	8-13576-00416-3	12/1 lb Granules
100550447	8-13576-00428-6	8/2 lb Granules

#### ALSO AVAILABLE IN DISPLAYS

ITEM#	UPC	CS/PK
100550445	8-13576-00416-3	48/1 lb Quarter Pallet



A



### A. AMDRO® FIRE ANT KILLER YARD SPRAY

Ready To Spray

Active: 0.35% Zeta-Cypermethrin

- Kills the Queen
- Kills By Contact
- People & Pets may re-enter treated area after spray dries
- Tough on fire ants gentle on your lawn\*

\*When used as directed

ITEM#	UPC	CS/PK	TREATS UP TO
100546761	8-13576-00504-7	4/1 quart RTS	4,267 sq.ft.





# KnockOut™



## A. KNOCKOUT™ FIRE ANT KILLER PLUS! GRANULES

Active: 0.1% Bifenthrin

- KnockOut™ Fire Ant Killer Plus! Granules kills fire ants as well as ants, fleas, ticks, and other bugs

ITEM#	UPC	CS/PK
342048	0-21496-26303-8	12/3.5 lb
342029	0-21496-26303-8	110/3.5 lb

## B. KNOCKOUT™ FIRE ANT KILLER DUST

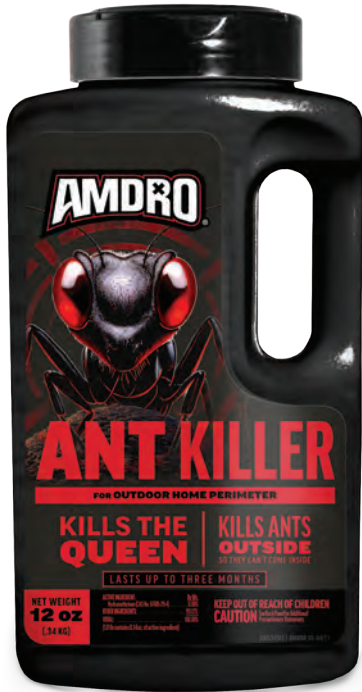
Active: 0.1% Deltamethrin

- Kills the fire ant mound overnight
- Kills fire ants on contact

ITEM#	UPC	CS/PK
100532488	0-21496-01899-7	12/24 oz.



A



12 oz.



24 oz.



### A. AMDRO® ANT KILLER FOR OUTDOOR HOME PERIMETER

#### Granules

Active: 0.88% Hydramethylnon

- Kills the queen
- Kills ants outside so that they can't come inside
- Lasts up to 3 months

ITEM#	UPC	CS/PK	TREATS UP TO
100550426	8-13576-00497-2	6/12 oz.	540 Linear Ft.
100550427	8-13576-00500-9	8/24 oz.	1,080 Linear Ft.

#### ALSO AVAILABLE IN DISPLAYS

ITEM#	UPC	CS/PK	TREATS UP TO
100550429	8-13576-00500-9	48/24 oz.	1,080 Linear Ft.

## Create a barrier of home protection.

Amdro® Ant Killer for Outdoor Home Perimeter is a uniquely formulated bait that not only kills the ants you see, but it targets the entire colony at the source. This exclusive formula is a bait, so foraging ants carry granules directly into the mound as food for the colony. When the queen and other ants eat it, the whole mound dies.





## Count on Amdro® to get the job done.

Amdro® Ant Killer Bait products are premium bait stations and stakes formulated to attract both grease and sweet eating ants\*. Amdro® Ant Killing Bait starts to work immediately and with a smart approach to controlling household ants at the source.

### A. AMDRO® ANT KILLER BAIT STATIONS

#### Indoor Bait Stations

Active: 0.25% Propoxur

- Starts working immediately
- Destroys entire colonies of house ants
- Includes adhesive strip for mounting

\*Excludes Carpenter, Fire, Harvester and Pharaoh Ants

ITEM#	UPC	CS/PK
100550452	8-13576-00439-2	24/4 pk. Stations

### B. AMDRO® ANT KILLER BAIT STAKES

#### Indoor & Outdoor Bait Stakes

Active: 0.25% Propoxur

- Starts working immediately
- Destroys entire colonies
- Stake design stays where you put it

ITEM#	UPC	CS/PK
100550455	8-13576-00440-8	12/8 pk.



## Protects Homes, Decks and Other Wood Structures From Listed Destructive Insects.

It's not always easy to identify the culprit of wood damage. That's why these Amdro Quick Kill® products take care of carpenter bees, carpenter ants, termites and other listed wood-damaging insects. These non-staining formulas work fast to kill destructive insects now and prevent new infestations. The Ready-to-Use and Aerosol foam formulas treat large areas and structures, while the unique Foam formula "Kills and Fills" to provide a barrier for the pest.



CARPENTER BEE DAMAGE



TERMITE DAMAGE



CARPENTER ANT DAMAGE

### A. AMDRO QUICK KILL® INDOOR/OUTDOOR CARPENTER BEE, ANT & TERMITE KILLER

Ready-to-Use  
Active: 0.04% Zeta-Cypermethrin

- Kills within minutes
- Lasts up to 3 months
- Kills damaging listed insects and prevents new infestations
- Non-staining, no odor formula

<b>ITEM#</b>	<b>UPC</b>	<b>CS/PK</b>
100526850	8-13576-00407-1	4/1 gal.

### B. AMDRO QUICK KILL® INDOOR/OUTDOOR\* CARPENTER BEE, ANT & TERMITE KILLER FOAM

Aerosol  
Active: 0.005% Fipronil

- Kills the insects you see & the ones you don't
- Foam expands immediately to start killing
- Great for hard to reach areas

<b>ITEM#</b>	<b>UPC</b>	<b>CS/PK</b>
100530435	8-13576-00427-9	8/1 LB 20Z

\* Not for Outdoor/Exterior Use in California





A



### A. AMDRO® TICK KILLER YARD SPRAY

Ready To Spray

Active: 0.35% Zeta-Cypermethrin

- Kills Blacklegged, Lone Star, and Brown Dog Ticks & Mosquitoes
- Kills By Contact
- People & Pets may re-enter treated area after spray dries
- Tough on ticks gentle on your lawn\*

\*When used as directed

ITEM#	UPC	CS/PK	TREATS UP TO
100546786	8-13576-00499-6	4/1 quart RTS	4,267 sq. ft.



## Tough on ticks. Gentle on your lawn\*.

Amdro® Tick Killer Yard Spray kills Blacklegged, Lone Star, and Brown Dog ticks and mosquitoes. No mixing or measuring is required, so you can focus on targeting the unwanted pests. This spray is easy-to-use and the formula kills on contact to protect your yard against ticks.

\*When used as directed





DEFENDING YOUR VEGETABLE GARDEN  
AND LAWN WITH RELIABLE RESULTS

# Slug & Snail Control





**PEOPLE AND PETS  
MAY ENTER THE  
AREA IMMEDIATELY  
AFTER PRODUCT IS APPLIED**



**A**



3.5 lb

1.75 lb

8 lb



## Attract and kill slugs and snails.

The Corry's® branded items can be used in vegetable gardens and contain a non-toxic mode of action. People and pets may enter the area immediately after the product is applied.

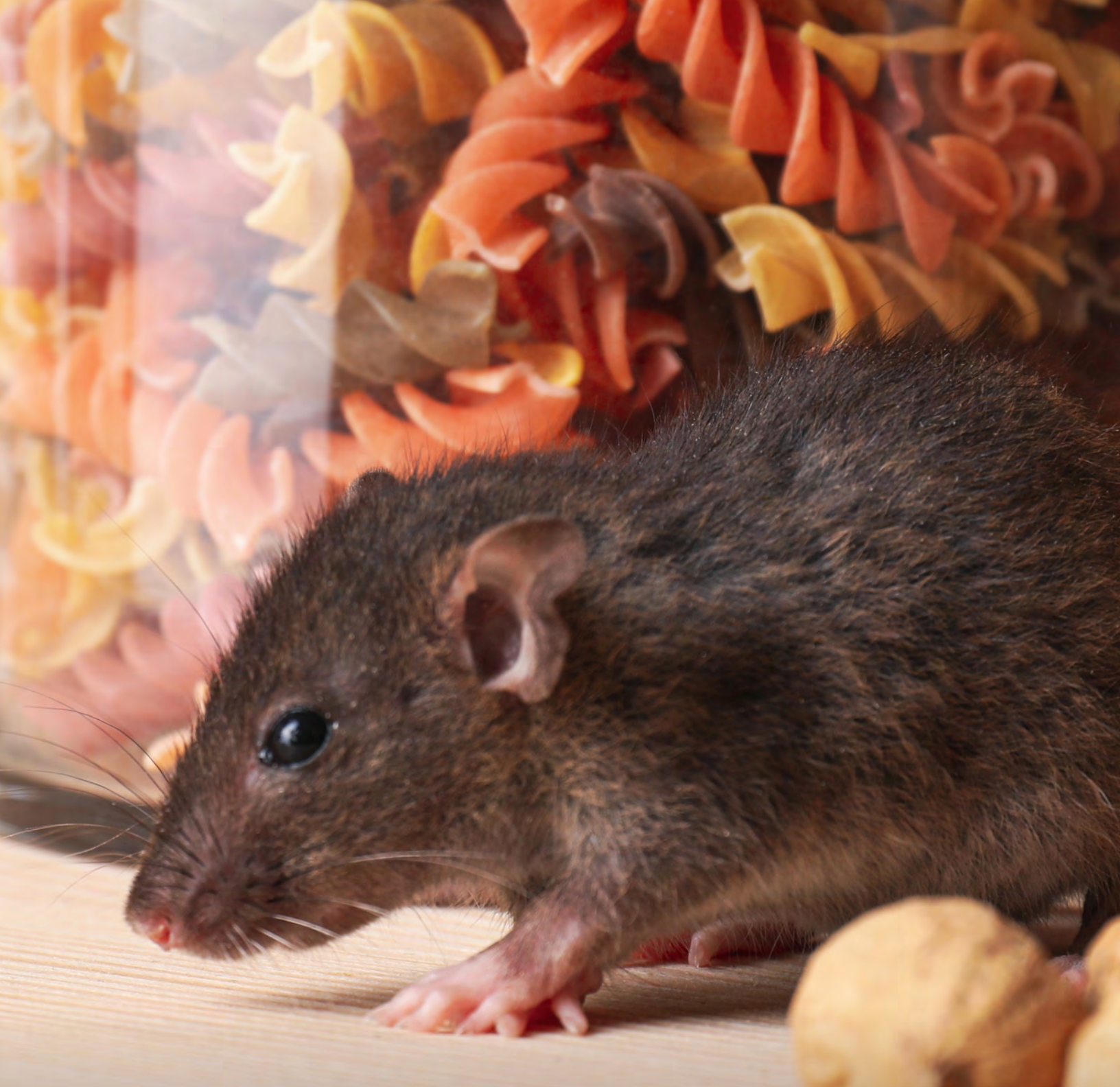
### **A. CORRY'S® SLUG & SNAIL KILLER**

Mini-pellets

Active: 5% Sodium Ferric EDTA

- People and pets may enter the area immediately after product is applied
- Attracts and kills slugs and snails
- Ideal for vegetable gardens up to and including day of harvest
- For use on turf, around ornamentals, vegetables and fruit
- Remains effective after rain or sprinkling

ITEM#	UPC	CS/PK	COVERS UP TO
100511427	0-70585-00056-6	12/1.75 lb	8,750 sq. ft.
100537446	0-70585-00057-3	4/3.5 lb	17,500 sq. ft.
100536659	0-70585-00060-3	4/8 lb	40,000 sq. ft.



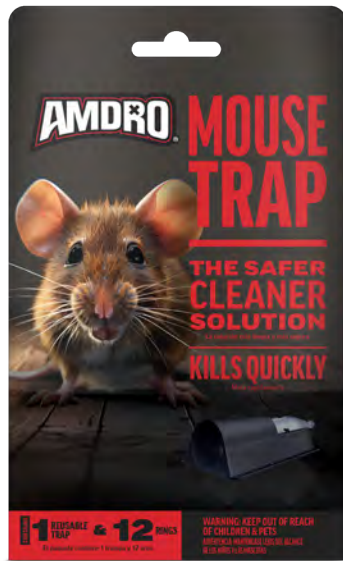
CONTROLLING THE RODENTS IN YOUR LIVING SPACES

# Animal & Rodent Control

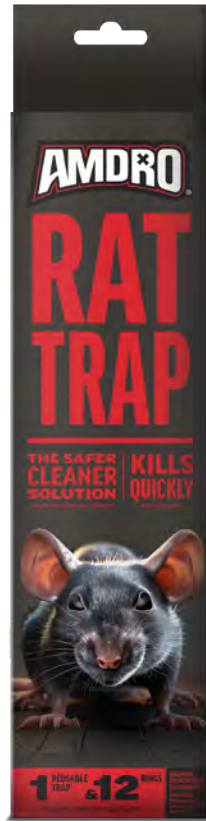




A



B



**A. AMDRO® MOUSE TRAP**

- Kills quickly
- The safer, cleaner solution
- Kills 12 mice

ITEM#	UPC	CS/PK
100534972	8-13576-00446-0	6 each

**B. AMDRO® RAT TRAP**

- Kills quickly
- The safer, cleaner solution
- Kills 12 rats

ITEM#	UPC	CS/PK
100534974	8-13576-00447-7	8 each

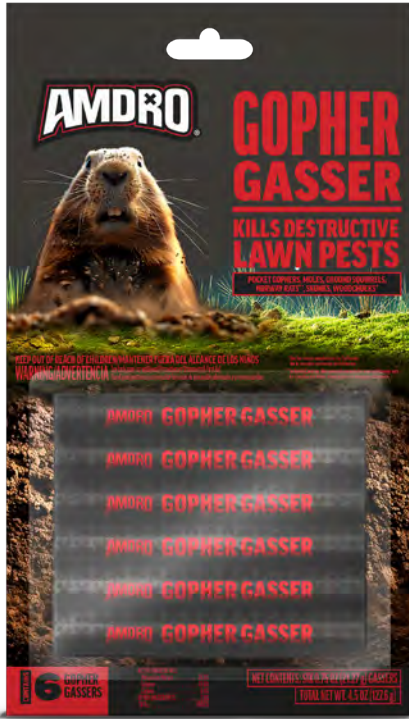


Kill rats & mice with reusable, unique, no-mess traps.

Amdro® Rat & Mouse Traps are the safer, cleaner solution to rodent control. These patented traps are guaranteed to kill quickly, without the blood or mess that other traps leave behind. These reusable Amdro® traps are easy to set and come with 12 refill rings.



A



B



C



## Maintain a pest-free lawn by controlling animal pests.

The Amdro® Gopher Gasser provides effective control of destructive animal pests like pocket gophers, moles, ground squirrels and more as listed.

Effectively control lawn-damaging pocket gophers with Amdro® Gopher Trap. No poison, no chemicals, no gophers.

Take back your lawn from damaging moles and gophers with Amdro® Mole\* & Gopher\*\* Bait. This pelletized bait is highly effective and easy-to-use with the convenient shaker canister.

### A. AMDRO® GOPHER GASSER

Actives: 45% Potassium Nitrate  
45% Sulfur  
8% Carbon

- Kills destructive lawn pests: Pocket Gophers, Moles, Ground Squirrels, Norway Rats\*, Skunks, and Woodchucks\*
- Gassers come in cylinder form small enough to penetrate underground tunnels
- Easy application

\* Not for use on woodchucks in California.

\*\* In North Carolina, this product can only be used on Norway rats

ITEM#	UPC	CS/PK
100525532	8-13576-00860-4	12/6 pk.

### B. AMDRO® GOPHER TRAP

- Effectively controls pocket gophers
- No poison, no chemicals
- Baitless trap

ITEM#	UPC	CS/PK
100510682	8-13576-00862-8	12/2 pk.

### C. AMDRO® MOLE\* & GOPHER\*\* BAIT

Active: 2% Zinc Phosphide

- Ready-to-use pelleted bait
- Kills pocket gophers and moles

\* Not for mole use in California or Indiana.

Not for use against star-nosed mole in North Carolina.

\*\* Not for use against pocket gophers in North Carolina.

ITEM#	UPC	CS/PK
100510486	8-13576-00861-1	12/1 lb









THERE'S NO SUBSTITUTE FOR QUALITY

**Wildlife**



# PENNINGTON®

A



## A. RACKMASTER® DUAL SEASON

Annual Mix

- Extend your hunting season – ideal for both seasons
- Maximize antler growth
- Ideal for spring or fall
- Provides early protein for critical antler development

<b>SAP</b> 100538332	<b>UPC</b> 0-21496-01914-7	<b>CS/PK</b> 2/10 lb	<b>COVERS UP TO</b> ¼ acre
-------------------------	-------------------------------	-------------------------	-------------------------------

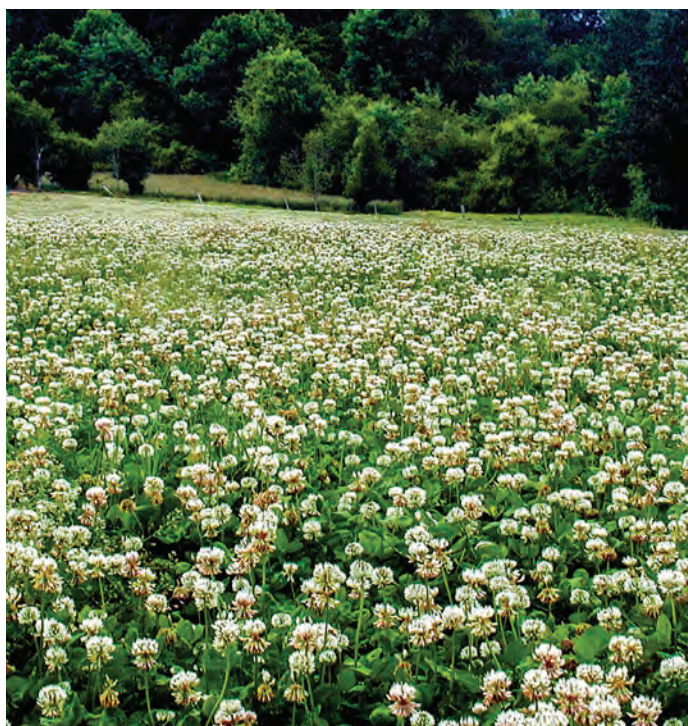


## Our heritage & legacy.

Pennington has a long history in farming and a tradition built around the outdoors starting with the first members of the Pennington family that moved from Europe to Morgan County, Georgia in the 1700's. Being good stewards of the land, wildlife and sharing the love of the outdoors with family and friends has been passed down through the generations as a part of the Pennington heritage. Founded in 1945, Brooks Pennington, Jr. created a company based on these values and over 75 years later we are proud that Pennington Seed is still guided by those principals.

This culture and these values are reflected in all of our products. This is why we know as thrilling as the hunt can be, there's also an excitement that comes from planning and planting quality food plots to attract and hold game on your farm.

**PENNINGTON**  
**RACKMASTER**



**A. RACKMASTER® DURANA WHITE CLOVER**

Perennial

- Lasts 3x longer than Ladino Clover
- Outstanding persistence
- Proven durable
- Widely adapted
- Deer love it

**SAP**

100549903

**UPC**

0-21496-02882-8

**CS/PK**

8/3 lb

**COVERS UP TO**

½ acre



**PENNINGTON**  
**RACKMASTER**



**A. RACKMASTER® CLOVER TRIO**

**Annual Blend**

- Germinates quickly
- Makes an excellent stand-alone plot or works well mixed with small grains
- Staggered maturity dates ensure protein rich forage when it is most needed
- Blend of annual clovers

<b>SAP</b>	<b>UPC</b>	<b>CS/PK</b>	<b>COVERS UP TO</b>
100081731	0-21496-29562-6	6/5 lb	½ acre

**B. RACKMASTER® TROPHY RADISHES**

**Annual**

- Deer readily eat top growth and the root
- Protein content ranging from 20 to 43%
- Yields up to 2.5 tons per acre
- Plant anywhere 45 days before 1st frost

<b>SAP</b>	<b>UPC</b>	<b>CS/PK</b>	<b>COVERS UP TO</b>
100504528	0-21496-00256-9	6/5 lb	½ acre

**C. RACKMASTER® DEER GREENS**

**Annuals**

- 100% brassica blend containing Trophy Radishes
- Easy to establish
- Highly preferred by deer during winter months
- No till planting mix

<b>SAP</b>	<b>UPC</b>	<b>CS/PK</b>	<b>COVERS UP TO</b>
100082814	0-21496-28151-3	6/5 lb	½ acre

**PENNINGTON**  
**RACKMASTER**



**A. RACKMASTER® MISSISSIPPI COMPLETE**

Annual Mix

- Developed for Mississippi and surrounding states
- Custom mixture of wheat, oats, crimson and arrowleaf clovers
- Planted and approved by biologist with MDWFP

<b>SAP</b>	<b>UPC</b>	<b>CS/PK</b>	<b>COVERS UP TO</b>
100081718	0-21496-29460-5	50 lb	½ acre

**B. RACKMASTER® SPRING SUMMER DELUXE**

Annual Mix

- Specifically formulated with forages and grains
- Meets the high energy and protein needs of deer during the summer and early autumn seasons
- Provides ample nutrition for antler development, fawn development and body condition recovery from winter

<b>SAP</b>	<b>UPC</b>	<b>CS/PK</b>	<b>COVERS UP TO</b>
100081715	0-21496-29655-5	50 lb	½ acre



**C. RACKMASTER® DELUXE FALL DEER MIXTURE**

Annual Mix

- High yielding annual seed mixture
- Over 10% legumes

<b>SAP</b>	<b>UPC</b>	<b>CS/PK</b>	<b>COVERS UP TO</b>
100081720	0-21496-29640-1	50 lb	½ acre

**D. RACKMASTER® FEEDING FRENZY®**

Annual Mix

- Fast growing, quick results
- Energy rich food plots
- Rapid Results® technology
- Mineral-rich trophy radishes

<b>SAP</b>	<b>UPC</b>	<b>CS/PK</b>	<b>COVERS UP TO</b>
100526573	0-21496-01674-0	25 lb	½ acre









BETTER YIELDS WITH HIGH PERFORMANCE SEED

# Forage





## Seed mixes for quality pastures.

For over 60 years, Pennington has been dedicated to improving forage grasses and legumes through research and testing at leading universities and on farms.

This research has led us to develop forage seed with advanced technology that leads to improved performance, higher yields, better persistence and higher quality.

### A. JESUP MAXQII® TALL FESCUE – COOL SEASON PERENNIAL GRASS

- Cool Season Perennial Grass
- A powerful upgrade to the Jesup MaxQ® tall fescue
- Enhanced seedling vigor
- Provide even greater persistence under grazing than the original Jesup MaxQ® tall fescue in tough environments
- Excellent choice for livestock producers planting anywhere that tall fescue is grown

<b>ITEM#</b>	<b>UPC</b>	<b>CS/PK</b>
100539827	0-21496-02125-6	25 lbs

### B. TEXOMA MAXQII® TALL FESCUE – COOL SEASON PERENNIAL GRASS

- The first non-toxic endophyte tall fescue developed by the Noble Foundation for the central and south-central U.S.
- Can produce double the pounds of beef per acre compared to Kentucky 31
- Widely adapted throughout the Fescue Belt – superior performer in TX, OK, AR, LA & MS
- Excellent seedling vigor and rust resistance

<b>ITEM#</b>	<b>UPC</b>	<b>CS/PK</b>
100507239	0-21496-30127-3	25 lb

### C. LACEFIELD MAXQII® TALL FESCUE – COOL SEASON PERENNIAL GRASS

- Utilizes the best novel endophyte technology offered by AgResearch USA – MaxQII® tall fescue
- Excellent seedling vigor, high forage yields, improved persistence under grazing, and high weight gains in stocker cattle
- Excellent choice for livestock producers planting tall fescue in Kentucky and surrounding states

<b>ITEM#</b>	<b>UPC</b>	<b>CS/PK</b>
100531381	0-21496-01830-0	25 lbs





**A. PENNINGTON® CHEYENNE II BERMUDAGRASS – WARM SEASON PERENNIAL**

- High yielding with excellent quality forage
- Economical alternative to sprigging
- Easy to establish from seed
- Excellent heat, pest and drought tolerance
- Will not revert back to common bermuda

ITEM#	UPC	CS/PK
100081101	0-21496-00045-9	25 lb

**B. PENNINGTON® MOHAWK BERMUDAGRASS – WARM SEASON PERENNIAL**

- High yielding
- Excellent for grazing and hay production
- Strong seedling vigor, quick coverage, and durable
- Deep-rooted for increased drought tolerance and winter survival
- Superior cold tolerance

ITEM#	UPC	CS/PK
100081202	0-21496-22277-6	25 lb

**C. PENNINGTON® TIERRA VERDE BLEND ALL PURPOSE BERMUDAGRASS – WARM SEASON PERENNIAL**

- Superior cold tolerance
- Wide planting window
- Rapid emergence and quick cover
- Excellent durability and wear
- Multiple use: hay, grazing, landscape and vegetative erosion control

ITEM#	UPC	CS/PK
100525754	0-21496-01672-6	25 lb





### A. PENNINGTON® DURANA WHITE CLOVER – COOL SEASON PERENNIAL LEGUME

- High nitrogen fixation
- Heat and drought tolerant
- Excellent reseeding capability
- Unmatched persistence under heavy grass competition and grazing pressure
- True perennial that will hold the soil year round, saving precious topsoil and is easy to maintain

ITEM#	UPC	CS/PK
100081674	0-21496-26655-8	25 lb

### B. PENNINGTON® WINTERGRAZER 70 RYE – COOL SEASON ANNUAL GRASS

- Under favorable growing conditions, establishes quickly to provide grazing within 6-8 weeks after planting
- Cold tolerant and will continue to grow at lower temperatures
- Grows well on poor soils with low pH
- Excellent for use as a cover crop

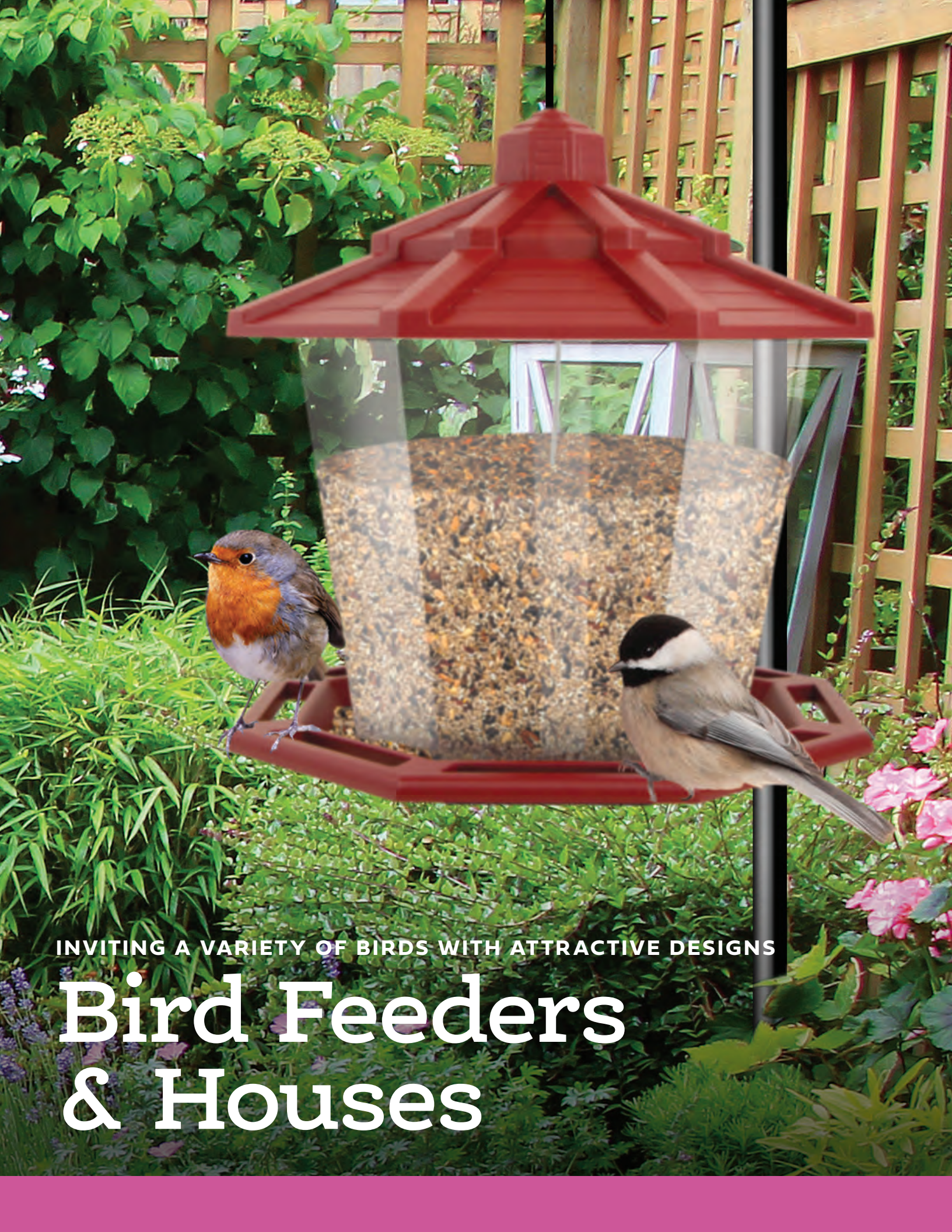
ITEM#	UPC	CS/PK
100082592	0-21496-00455-6	50 lb

### C. PASSEREL PLUS ANNUAL RYEGRASS – ANNUAL GRASS

- Excellent for grazing, hay, silage or green chop
- High yielding and late maturing – provides high quality grazing deeper into spring and early summer
- Cold tolerant
- Rapid regrowth
- Rust resistant

ITEM#	UPC	CS/PK
300025744	0-21496-29661-6	50 lb

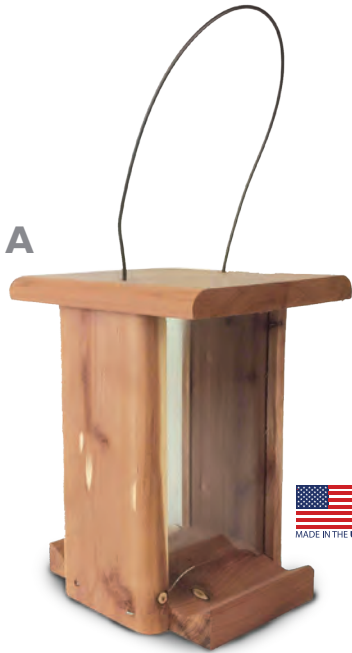




INVITING A VARIETY OF BIRDS WITH ATTRACTIVE DESIGNS

# Bird Feeders & Houses





### A. CEDAR BIN FEEDER

- Eastern Red Cedar - Nature's Renewable Resource
- Naturally resistant to weather & insects
- Ideal for small birds
- Easy to fill, ready to hang
- Capacity: Up to 1 lb.

ITEM#	UPC	CS/PK	DIMENSIONS
100539372	0-21496-02111-9	4	5 x 6 x 7.13

### B. CEDAR TREATER FEEDER

- Eastern Red Cedar - Nature's Renewable Resource
- Naturally resistant to weather and insects
- Ideal for small birds
- Easy to fill, ready to hang
- Capacity: Up to 2 lbs.

ITEM#	UPC	CS/PK	DIMENSIONS
100539374	0-21496-02113-3	2	7 x 7.25 x 9.25

### C. CEDAR CHALET FEEDER

- Eastern Red Cedar - Nature's Renewable Resource
- Naturally resistant to weather and insects
- Attract a variety of birds with seed and suet combination
- Roof design keeps seed and suet dry and fresh
- Easy to fill, ready to hang
- Capacity: Up to 2 lbs. & 2 suet cakes

ITEM#	UPC	CS/PK	DIMENSIONS
100539373	0-21496-02112-6	2	12 x 6.75 x 10

## Durable feeders for years of enjoyment.

Our Pennington® Pride line of products is featured in independent and online retailers throughout the country. These items offer a diverse assortment of mixes that are sure to satisfy a wide variety of wild birds.



### A. 10 OZ. GLASS HUMMINGBIRD FEEDER

- Heavy duty clear glass bottle with wide opening for easy filling and cleaning
- Base disassembles for easy cleaning
- Built-in ant moat on top
- Perches flip down
- Hanging wire included
- Capacity: Holds up to 10 oz.

**ITEM#**

100539804

**UPC**

0-21496-02124-9

**CS/PK**

4

**DIMENSIONS**

6.75 x 6.75 x 8.88





**A. CEDAR HOME**

- Eastern Red Cedar - Nature's Renewable Resource
- Naturally resistant to weather & insects
- Ideal nesting spot for small cavity nesting birds
- Side opens for easy cleaning
- Mounting & hanging hardware included

<b>ITEM#</b>	<b>UPC</b>	<b>CS/PK</b>	<b>DIMENSIONS</b>
100539379	0-21496-02118-8	4	6.75 x 6.44 x 7.5

**B. CEDAR HOUSE W/PREDATOR GUARD**

- Eastern Red Cedar - Nature's Renewable Resource
- Naturally resistant to weather and insects
- Built in predator guard
- Ideal nesting spot for Eastern Bluebirds
- Proper ventilation & drainage openings
- Mounting hardware included

<b>ITEM#</b>	<b>UPC</b>	<b>CS/PK</b>	<b>DIMENSIONS</b>
100539378	0-21496-02117-1	2	5.75 x 6.88 x 11



**A. CEDAR GAZEBO FEEDER**

- Eastern Red Cedar - Nature's Renewable Resource
- Naturally resistant to weather & insects
- Open window design allows for shelter
- 6 sides - 4 more than most feeders, to accommodate more birds
- Easy to fill, ready to hang
- Capacity: Up to 3 lbs.

ITEM#	UPC	CS/PK	DIMENSIONS
100509194	0-16544-02378-8	2	12.75x12.75 x 12.50





## A. CEDAR GRAND SNACK SHACK

- Eastern Red Cedar - Nature's Renewable Resource
- Naturally resistant to weather & insects
- Attract more birds with seed & suet combination
- Accommodates a variety of seed types
- Easy to fill, ready to hang
- Capacity: Up to 3.75 lbs. & 2 suet cakes

**ITEM#** 100526802  
**UPC** 0-21496-01735-8  
**CS/PK** 2

**DIMENSIONS**  
 11.81 x 6.88 x 8

## B. CEDAR GRAND CHALET FEEDER

- Eastern Red Cedar - Nature's Renewable Resource
- Naturally resistant to weather & insects
- Large capacity
- Attract more birds with seed and suet combination
- Easy to fill, ready to hang
- Capacity: Up to 14 lbs. & 2 suet cakes

**ITEM#** 100509060  
**UPC** 0-16544-02356-6  
**CS/PK** 2

**DIMENSIONS**  
 18 x 11.63 x 13

# PENNINGTON®



## A. CEDAR CHALET FEEDER

- Eastern Red Cedar - Nature's Renewable Resource
- Naturally resistant to weather & insects
- Attract more birds with seed & suet combination
- Roof design keeps seed dry and fresh
- Easy to fill, ready to hang
- Capacity: Up to 2 lbs. and 2 suet cakes

<b>ITEM#</b>	<b>UPC</b>	<b>CS/PK</b>	<b>DIMENSIONS</b>
100511300	0-21496-22623-1	2	12x 6.75 x 10



## B. CEDAR NATURE'S FRIEND FEEDER

- Eastern Red Cedar - Nature's Renewable Resource
- Naturally resistant to weather & insects
- Perfect for first time bird feeders
- Ideal for all small birds
- Easy to fill, ready to hang
- Capacity: Up to 3 lbs.

<b>ITEM#</b>	<b>UPC</b>	<b>CS/PK</b>	<b>DIMENSIONS</b>
100523098	0-16544-02383-2	2	11.75 x 6.13 x 7.50



## C. CEDAR JUNIOR PAVILION FEEDER

- Eastern Red Cedar - Nature's Renewable Resource
- Naturally resistant to weather & insects
- Feed from all 4 sides to accommodate more birds
- Easy to fill, ready to hang
- Capacity: Up to 2.5 lbs.

<b>ITEM#</b>	<b>UPC</b>	<b>CS/PK</b>	<b>DIMENSIONS</b>
100521909	0-21496-22679-8	2	9.50 x 9.50 x 13.50



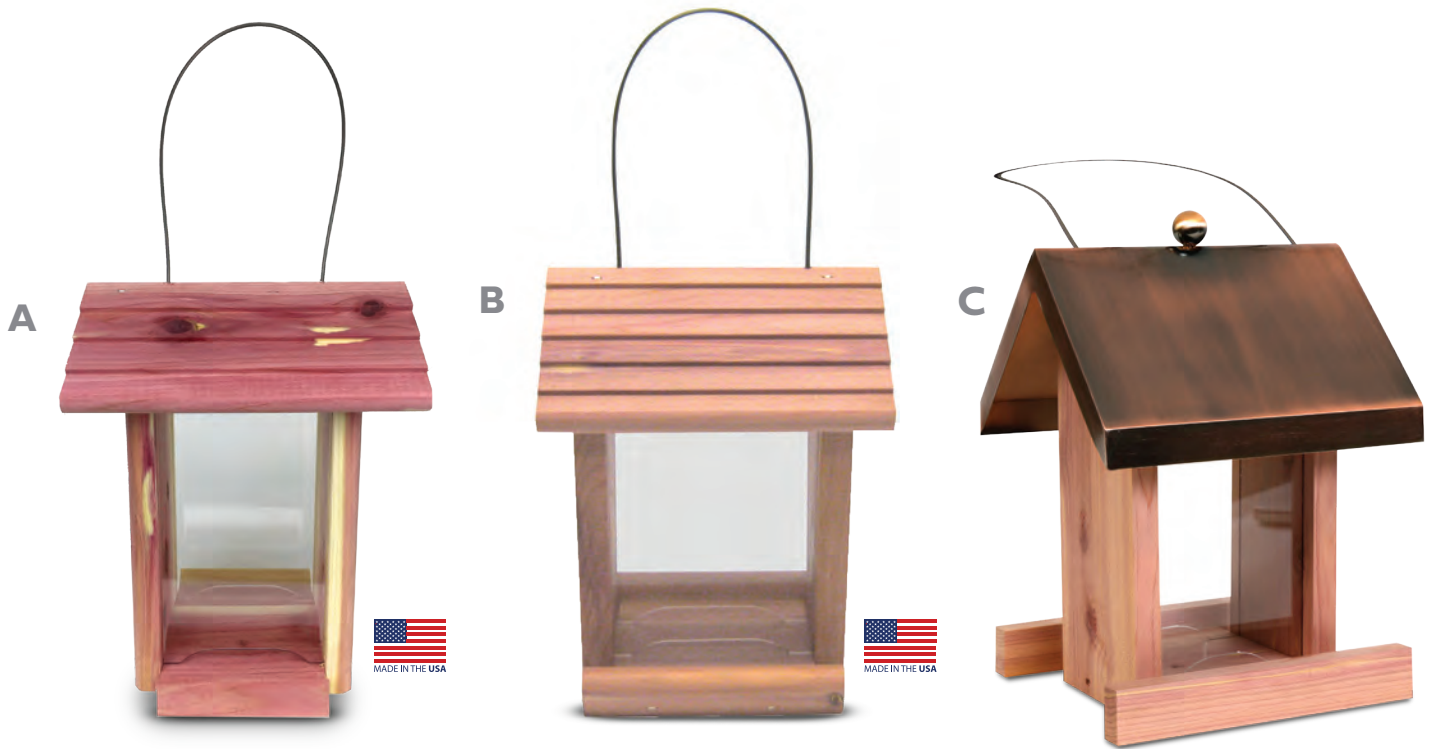
## D. CEDAR SUET STATION FEEDER

- Eastern Red Cedar - Nature's Renewable Resource
- Naturally resistant to weather & insects
- Roof design keeps suet dry and fresh
- Attract more birds with suet
- Easy to fill, ready to hang
- Capacity: 2 cakes

<b>ITEM#</b>	<b>UPC</b>	<b>CS/PK</b>	<b>DIMENSIONS</b>
100514189	0-16544-02381-8	2	6.75 x 6.25 x 6.75



# PENNINGTON®



## Attract a variety of birds all year round.

Skillfully handmade in Ohio by Amish and other American master craftsmen. Made from durable Eastern Red Cedar, our superior level of quality ensures that these feeders will be beautiful and functional for years to come.

### A. CEDAR DINETTE FEEDER

- Eastern Red Cedar – Nature's Renewable Resource
- Naturally resistant to weather & insects
- Perfect for first time bird feeders
- Ideal for all small birds
- Easy to fill, ready to hang
- Capacity: Up to 1.25 lbs.

ITEM#	UPC	CS/PK	DIMENSIONS
100514188	0-16544-02376-4	2	7x4.75x9

### B. CEDAR TREATER FEEDER

- Eastern Red Cedar – Nature's Renewable Resource
- Naturally resistant to weather & insects
- Removable and easy to clean plexiglass
- Ideal for all small birds
- Easy to fill, ready to hang
- Capacity: Up to 2 lbs.

ITEM#	UPC	CS/PK	DIMENSIONS
100513431	0-21496-01409-8	2	7x7.25x9.25

### C. CEDAR COPPER ROOF VILLA FEEDER

- Eastern Red Cedar – Nature's Renewable Resource
- Naturally resistant to weather & insects
- Decorative copper roof
- Ideal feeder for small birds
- Easy to fill, ready to hang
- Capacity: Up to 1.5 lbs.

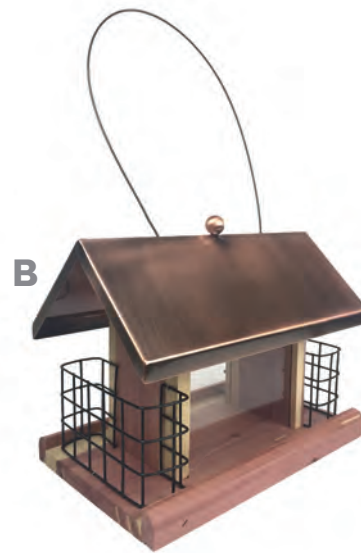
ITEM#	UPC	CS/PK	DIMENSIONS
100523309	0-21496-01630-6	2	7x6.25x10.50



## A. CEDAR BUFFET BIRD FEEDER

- Eastern Red Cedar – Nature’s renewable resource
- Naturally resistant to weather
- Designed to attract favorite songbirds like chickadees, cardinals, goldfinches
- Easy to fill and ready to hang
- Capacity: Holds up to 4.5 lbs

<b>ITEM#</b>	<b>UPC</b>	<b>CS/PK</b>	<b>DIMENSIONS</b>
100546502	0-21496-02487-5	2	11.81 x 6.88 x 8



## B. CEDAR COPPER ROOF CAFE BIRD FEEDER

- Eastern Red Cedar – Nature’s renewable resource
- Naturally resistant to weather
- Decorative copper plated roof
- Attract more songbirds with seed & suet combination
- Easy to fill and ready to hang
- Capacity: Holds up to 2.5 lbs & 2 Suet Cakes

<b>ITEM#</b>	<b>UPC</b>	<b>CS/PK</b>	<b>DIMENSIONS</b>
100523450	0-21496-01631-3	2	11.38 x 6.31 x 8.5



## C. CEDAR GROUND TRAY FEEDER

- Eastern Red Cedar – Nature’s renewable resource
- Naturally resistant to weather
- Perfect for attracting ground feeding birds including Quail
- Can be ground tray feeder or mounted tray feeder
- Heavy duty perforated bottom for drainage and air flow to help keep seed fresh
- Capacity: Holds up to 3 lbs seed or a 21 lb Seed Block

<b>ITEM#</b>	<b>UPC</b>	<b>CS/PK</b>	<b>DIMENSIONS</b>
100534788	0-21496-01937-6	5	12 x 2.25 x 12.25



## D. CEDAR SUET PLUG BIRD FEEDER

- Attracts variety of woodpeckers and other clinging birds
- Naturally resistant to weather & insects
- Eastern Red Cedar – Nature’s Renewable Resource
- Weather resistant durable mesh
- Holds up to 4 suet plugs

<b>ITEM#</b>	<b>UPC</b>	<b>CS/PK</b>	<b>DIMENSIONS</b>
100544361	0-21496-02324-3	4	5 x 3.88 x 16.13





**A. CEDAR HANGING 2 IN 1 BIRD BATH/FEEDER**

- Eastern Red Cedar – Nature’s Renewable Resource
- Naturally resistant to weather & insects
- Multi-functional feeder that can be a bird feeder or bird bath
- Easy to hang with included hardware
- Merchandised in PDQ
- Capacity: Up to 4 lbs.

ITEM#	UPC	CS/PK	DIMENSIONS
100509196	0-16544-02379-5	6	12.75 x 11 x 2.25



2 Feeders –  
Tray Feeder  
& Bird Bath

**B. CEDAR TRAY FEEDER & BIRD BATH**

- Eastern Red Cedar – Nature’s renewable resource
- Naturally resistant to weather
- Includes removable water tray
- Perforated tray feeder is idea for feeding mealworms or seed
- Perfect for birds to bathe, drink or eat
- Easy to hang with included hardware
- Capacity: Holds up to 4lbs

ITEM#	UPC	CS/PK	DIMENSIONS
100546052	0-21496-02437-0	6	12.75 x 11 x 2.25



**C. CEDAR DUAL SQUIRREL FEEDER**

- Eastern Red Cedar – Nature’s renewable resource
- Naturally resistant to weather
- Two feeders in one; feeds corn cob and critter mix
- Hinged lid designed to close after use to keep food dry
- Easy to mount with included hardware
- Capacity: Holds up to 1.5 lbs of critter mix & 1 corn cob

ITEM#	UPC	CS/PK	DIMENSIONS
100541013	0-21496-02183-6	2	7.06 x 9 x 9.75



**D. CEDAR SQUIRREL SNACKER FEEDER**

- Eastern Red Cedar – Nature’s Renewable Resource
- Naturally resistant to weather & insects
- Multi-functional feeder that can be used for squirrels or birds
- Squirrel feeder or flip glass for a bird feeder
- Easy to mount with included hardware
- Capacity: Up to 2.75 lbs.

ITEM#	UPC	CS/PK	DIMENSIONS
100509197	0-16544-02380-1	2	7 x 7.75 x 9



## Affordable feeders for every home.

Hopper Feeders come in a variety of sizes and materials ensuring that we have a feeder to suit every need and budget.

### A. GARDEN COACH LIGHT FEEDER

- 6 sides for ample perch space
- Ideal feeder for all birds
- Hang or pole mount
- Easy to fill, ready to hang
- Capacity: Up to 4 lbs.

ITEM#	UPC	CS/PK	DIMENSIONS
100550256	0-21496-22631-6	4	11.50 x 10 x 13.50

### B. SONGBIRD LANTERN FEEDER

- Perfect for first time feeders
- Ideal feeder for small birds
- Roof design keeps seed fresh and dry
- Easy to fill, ready to hang
- Capacity: Up to 1 lb.

ITEM#	UPC	CS/PK	DIMENSIONS
100521908	0-21496-22634-7	4	6.75 x 6 x 8.25

### C. COUNTRY BARN FEEDER

- Constructed with durable plastic components
- Ideal feeder for small birds
- Built in seed diverter to flow seed evenly to openings to eliminate seed build up and waste
- Hang or pole mount
- Hinged roof allows for easy filling
- Capacity: Holds up to 4 lbs

ITEM#	UPC	CS/PK	DIMENSIONS
100543315	0-21496-02253-6	2	10.5 x 7.5 x 8.75





**A. PETITE ECOZEBO™ FEEDER (GRAY)**

- 100% recycled roof and base
- Variations in recycled material will give each feeder a unique look
- Hang or pole mount
- Easy to fill, ready to hang
- Capacity: Up to 2.5 lbs

<b>ITEM#</b>	<b>UPC</b>	<b>CS/PK</b>	<b>DIMENSIONS</b>
100551359	0-21496-02326-7	2	8.75 x 7.5 x 9.5



**B. ECOBISTRO™ FEEDER**

- 100% recycled roof and base
- Variations in recycled material will give each feeder a unique look
- Attract more birds with seed and suet combination
- Hang or pole mount
- Capacity: Up to 5 lbs and 2 suet cakes

<b>ITEM#</b>	<b>UPC</b>	<b>CS/PK</b>	<b>DIMENSIONS</b>
100536627	0-21496-02006-8	2	15.75 x 11 x 9.75



**C. RECYCLED GRAND ECOZEBO™ FEEDER (RED)**

- 100% recycled roof and base
- Variations in recycled material will give each feeder a unique look
- Large capacity
- Hang or pole mount
- Capacity: up to 10 lbs

<b>ITEM#</b>	<b>UPC</b>	<b>CS/PK</b>	<b>DIMENSIONS</b>
100551357	0-21496-01759-4	2	11 x 10.86 x 13.63



**D. RECYCLED ECOGAZEBO™ FEEDER (BLACK)**

- Locking top with twist and lock design
- Locking top keeps squirrels out
- 100% recycled top and base
- Feeds both small and large birds
- Hang or pole mount
- Holds up to 6 lbs

<b>ITEM#</b>	<b>UPC</b>	<b>CS/PK</b>	<b>DIMENSIONS</b>
100544364	0-21496-02327-4	2	11.63 x 10.13 x 11.5



A



B



**A. SQUIREL RESISTANT FEEDER**

- Rust resistant steel base and seed ports
- Specially designed ports keep the squirrels out
- 6 ports feed more birds
- Easy to fill, ready to hang
- Capacity: Up to 4 lbs.

ITEM#	UPC	CS/PK	DIMENSIONS
100509185	0-16544-02369-6	2	5.25 x 5.25 x 18

**B. METAL UPSIDE DOWN SEED CAKE FEEDER**

- Ideal for clinging birds, such as woodpeckers & nuthatches
- Weather resistant durable metal
- Deters nuisance birds from eating seed cake or suet cake
- Easy to fill with lifting lid
- Holds up to 2 large seed cakes

ITEM#	UPC	CS/PK	DIMENSIONS
100544362	0-21496-02325-0	2	10 x 9 x 8.5

**Deter nuisance birds & squirrels from eating the seed.**

The Pennington® Squirrel-Resistant Metal Feeder features a chew-proof hanging cable and has specifically designed ports to keep the squirrels out.

The Pennington® Metal Upside Down Seed Cake Feeder is ideal for clinging birds, such as woodpeckers & nuthatches.





## Make your backyard a popular hangout for hummingbirds.

Keep your neighborhood hummingbirds happy. Pennington® Hummingbird Feeders are stylish, functional and designed to attract the Hummingbirds in your area.

### A. PLANTER HUMMINGBIRD FEEDER (2 PACK)

- Perfect for hanging baskets and planters
- Merchandised in PDQ
- Capacity: Up to 2.3 oz.

ITEM#	UPC	CS/PK	DIMENSIONS
100504340	0-16544-02303-0	12	2.25 x 3.25 x 14.75

### B. 16 OZ. CLASSIC HUMMINGBIRD FEEDER

- Bottle sits flat for easy filling
- Dishwasher safe, top rack only
- Base snaps apart for easy cleaning
- Includes hanging wire
- Capacity: Up to 16 oz.

ITEM#	UPC	CS/PK	DIMENSIONS
100515672	0-21496-00974-2	4	3.75 x 3.75 x 8.75

### C. 16 OZ. GLASS HUMMINGBIRD FEEDER

- Bee resistant ports & seals
- Built in ant moats
- Comes apart for easy cleaning
- Capacity: Up to 16 oz.
- Wide mouth bottle for easy filling

ITEM#	UPC	CS/PK	DIMENSIONS
100519437	0-21496-01347-3	2	5.51 x 5.51 x 8.35



## A. 28 OZ. FLIP PERCH GLASS HUMMINGBIRD FEEDER

- Bee resistant ports & seals
- Comes apart for easy cleaning
- Wide mouth bottle for easy filling
- Built in ant moat
- Capacity: Up to 28 oz.

ITEM#	UPC	CS/PK	DIMENSIONS
100531768	0-21496-01861-4	2	8.25 x 7.75 x 9.25



## B. 28 OZ. GLASS HUMMINGBIRD FEEDER

- Bee resistant ports & seals
- Comes apart for easy cleaning
- Wide mouth bottle for easy filling
- Built in ant moats
- Capacity: Up to 28 oz.

ITEM#	UPC	CS/PK	DIMENSIONS
100519439	0-21496-01349-7	2	7.48 x 7.48 x 9.40



## C. 32 OZ. DÉCOR HUMMINGBIRD FEEDER

- Bee resistant ports & seals
- Comes apart for easy cleaning
- Wide mouth bottle for easy filling
- Built in ant moats
- Capacity: Up to 32 oz.

ITEM#	UPC	CS/PK	DIMENSIONS
100519438	0-21496-01348-0	2	9.18 x 9.18 x 10.13

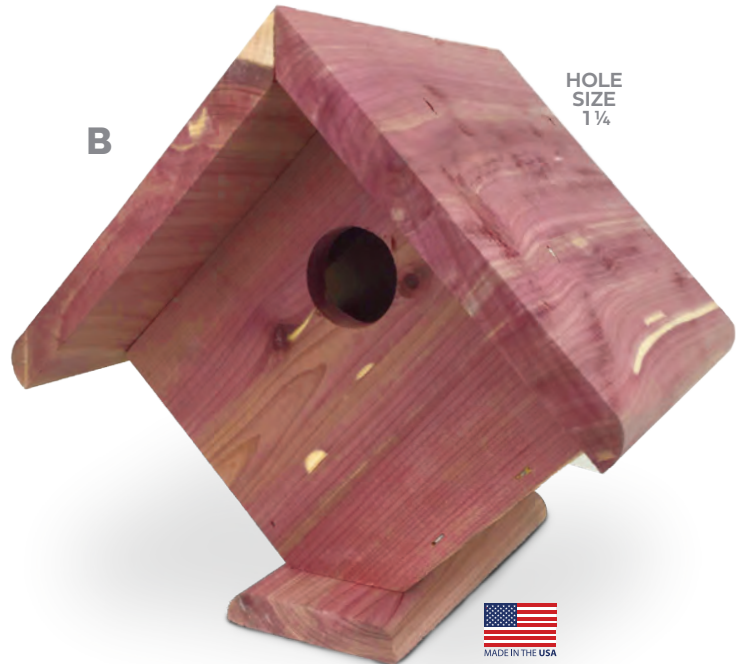
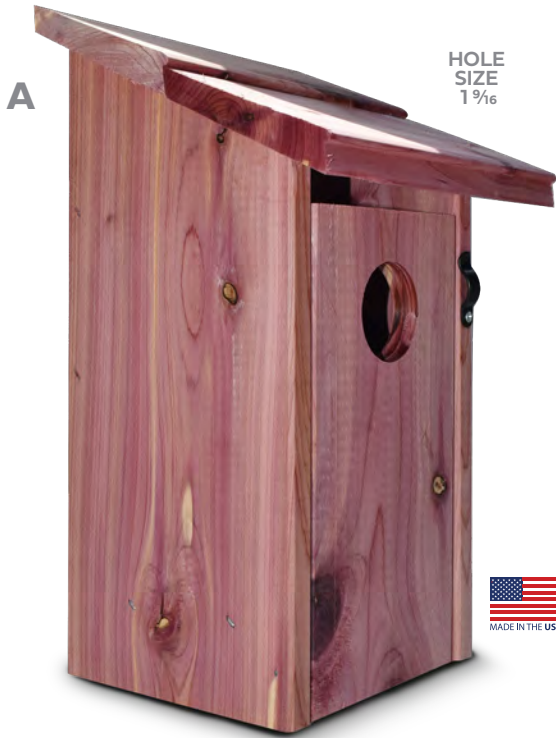


## D. 32 OZ. TRIPLE FLOWER GLASS HUMMINGBIRD FEEDER

- Feeds up to 18 hummingbirds
- Built-in ant moat in base
- Bee guards on each feeding port
- Wide mouth bottle for easy filling and cleaning
- Base snaps apart for easy cleaning
- Capacity: Holds up to 32 oz.

ITEM#	UPC	CS/PK	DIMENSIONS
100541015	0-21496-02185-0	2	11.25 x 11.25 x 11





Provide a safe nesting spot for popular songbirds.

Bird Houses are stylish, functional and designed to attract nesting birds in your area.

**A. CEDAR BIRD HOUSE**

- Eastern Red Cedar - Nature's Renewable Resource
- Naturally resistant to weather & insects
- The ideal nesting spot for North American Bluebirds
- Easy to mount with included hardware
- Easy clean – front pulls down for quick and easy cleaning

ITEM#	UPC	CS/PK	DIMENSIONS
100509190	0-16544-02374-0	2	6.69 x 5.88 x 10.81

**B. CEDAR WREN HOUSE**

- Eastern Red Cedar - Nature's Renewable Resource
- Naturally resistant to weather & insects
- Ideal for small cavity nesting birds
- Easy to mount with included hardware
- Side opens for easy cleaning

ITEM#	UPC	CS/PK	DIMENSIONS
100539676	0-21496-02119-5	3	8 x 6.81 x 7.38



# Durable, rust resistant hardware designed to last.

Accessories help to provide what you need to hang your feeder in any setting.

## A. 12 INCH FEEDER HOOK

- Great for both bird feeders and hummingbird feeders
- Made of rust resistant steel
- Holds up to 10 lbs. of weight
- Holds 1 hanging bird feeder or windchime
- Merchandised in PDQ

ITEM#	UPC	CS/PK	DIMENSIONS
100511315	0-21496-22638-5	12	0.25 x 7.25 x 12

## B. FEEDER POLE PLUS

- Attract a larger variety of birds with different types of feeders
- Made of rust resistant steel
- 2 removable decorative hangers
- Easy to assemble - no need to dig
- 5' installed height
- Merchandised in PDQ

ITEM#	UPC	CS/PK	DIMENSIONS
100509188	0-16544-02372-6	4	7.50 x 2 x 16.75

## C. WINDOW HOOK

- Great for both bird feeders and hummingbird feeders
- Made of rust resistant steel and durable plastic
- Heavy duty suction cups
- Holds up to 5 lbs. of weight
- Holds 1 hanging bird feeder
- Merchandised in PDQ

ITEM#	UPC	CS/PK	DIMENSIONS
100509187	0-16544-02371-9	6	6.25 x 1.50 x 8.50

## D. CRITTER COBBLER FEEDER

- Hang on a hook or branch
- Rust resistant steel
- Chew proof construction
- Merchandised in PDQ
- Capacity: 1 corn cob

ITEM#	UPC	CS/PK	DIMENSIONS
100509180	0-16544-02364-1	6	3.50 x 3 x 11.75









TRANSFORMING YOUR YARD INTO A MUSICAL SANCTUARY  
WITH TOP QUALITY SEED BLENDS

# Bird Food & Nectar





A



B



## Irresistible blends attract a variety of birds to your yard.

Our Pennington® Pride line of products is featured in independent and online retailers throughout the country. These 6 items offer a diverse assortment of mixes that are sure to satisfy a wide variety of wild birds.

### A. PENNINGTON PRIDE™ SONGBIRD NUT & FRUIT BLEND

- Attracts 2X more colorful birds\*†
- Contains 100% real fruit, nuts & seeds
- Attracts Indigo Buntings, Pine Siskins, Finches & Cardinals
- Advanced nutritious health formula for bird health

\* Compared to Pennington® Classic Bird Basics

† Results may vary by region and/or season

ITEM#	UPC	CS/PK
100537115	0-21496-02042-6	3/10 lb

### B. PENNINGTON PRIDE™ WILD FINCH BLEND

- Great for year round feeding
- Advanced nutritious formula for bird health
- Attracts Finches, Pine Siskins, Chickadees

ITEM#	UPC	CS/PK
100542487	0-21496-02040-2	4/10 lb



A



B



### A. PENNINGTON PRIDE™ RED BIRD BLEND

- Cardinals favorite food
- Attracts Juncos, Grosbeaks, Nuthatches & other Songbirds
- A balanced blend
- Advanced nutritious formula for bird health

ITEM# 100537116    UPC 0-21496-02043-3    CS/PK 3/10 lb

### B. PENNINGTON PRIDE™ WASTE FREE® BLEND

- No hulls, no mess
- Attracts Cardinals, Indigo Buntings, Chickadees, Grosbeaks & Finches
- Contains Sunflower Chips for attracting Songbirds
- Advanced nutritious formula for bird health

ITEM# 100542488    UPC 0-21496-02041-9    CS/PK 4/10 lb





A



B



C



### A. PENNINGTON PRIDE™ BIRDER'S BLEND®

- Special blend that attracts a wide variety of birds
- Attracts Cardinals, Pine Siskins, Chickadees, Finches and other colorful songbirds
- Fruit flavored
- Advanced nutritious formula for bird health

ITEM#	UPC	CS/PK
100542486	0-21496-02038-9	4/10 lb

### B. PENNINGTON PRIDE™ SQUIRREL & CRITTER BLEND

- A well balanced diet for critters
- Helps keep Critters away from your bird feeders
- A tasty treat includes Corn, Sunflowers and Peanuts
- Enriched with Bird-Kote® coating

ITEM#	UPC	CS/PK
100537112	0-21496-02039-6	4/10 lb

### C. PENNINGTON PRIDE™ WILD BIRD FEED

- Enriched with Bird-Kote® coating
- Contains sunflower seed for attracting songbirds
- Vitamin and mineral enriched
- Well balanced diet for birds

ITEM#	UPC	CS/PK
516252	0-21496-11145-2	30 lb
516254	0-21496-11146-9	50 lb

# PENNINGTON®

A



## A. PENNINGTON® ULTRA SONGBIRD BLEND

- High energy blend
- 100% real fruit, nuts, seeds & grains
- Attracts feathered favorites like Chickadees, Indigo Buntings, Cardinals and Purple Finches

ITEM#	UPC	CS/PK
100513292	0-21496-01609-2	7/6 lb
100541102	0-21496-01611-5	3/12 lb

B



## B. PENNINGTON® ULTRA WASTE FREE® BLEND

- No hulls, no mess, all edible mix
- Contains real fruit
- Attracts feathered favorites like Cardinals, Nuthatches, Finches and Grosbeaks

ITEM#	UPC	CS/PK
100513291	0-21496-01608-5	7/6 lb

C



## C. PENNINGTON® ULTRA NUT & FRUIT BLEND

- Contains real fruit
- Nutritious, healthy & safe
- Attracts feathered favorites like Chickadees, Cardinals, Pine Siskins and Purple Finches

ITEM#	UPC	CS/PK
100513290	0-21496-01607-8	7/6 lb
100541101	0-21496-01610-8	3/12 lb





A



### A. PENNINGTON® PREMIUM SELECT BLEND MIX

- Great to feed year-round
- Enriched with vitamins, minerals and nutrients to help provide wild birds a more balanced diet

ITEM#	UPC	CS/PK
515716	0-21496-00113-5	6/10 lb
515714	0-21496-11135-3	3/20 lb

# PENNINGTON®

A



## A. PENNINGTON® SELECT SUNFLOWER CHIPS

- Enriched with Bird-Kote® coating
- Fruit flavored
- Great for year-round feeding from feeders, trays, or on the ground
- Attracts a wide variety of songbirds

ITEM#	UPC	CS/PK
100541088	0-21496-02192-8	7/5 lb

B



## B. PENNINGTON® SELECT BIRDER'S BLEND®

- Vitamins and nutrients are added to create an enriched diet that birds love
- Attracts Cardinals, Chickadees, Goldfinches and Woodpeckers

ITEM#	UPC	CS/PK
100550008	0-21496-02189-8	4/10 lb
100511832	0-21496-11122-3	4/14 lb
100517135	0-21496-29753-8	50/40 lb

C



## C. PENNINGTON® SELECT WILD FINCH BLEND

- Enriched with Bird-Kote® coating
- Great for year-round feeding
- Attracts Finches, Siskins, Chickadees
- High oil content

ITEM#	UPC	CS/PK
100541083	0-21496-00057-2	5/10 lb



# PENNINGTON®

A



## A. PENNINGTON® SELECT BLACK OIL SUNFLOWER SEED

- Enriched with Bird-Kote® coating
- Fruit flavored
- Great for year-round feeding from feeders, trays, or on the ground
- Attracts a wide variety of songbirds

ITEM#	UPC	CS/PK
515576	0-21496-00010-7	3/10 lb
100520995	0-21496-01553-8	20 lb
100520996	0-21496-01555-2	40 lb

B



## B. PENNINGTON® SELECT SAFFLOWER SEED

- Great for year-round feeding
- Not as attractive to squirrels as sunflower

ITEM#	UPC	CS/PK
515638	0-21496-00059-6	8/7 lb

C



## C. PENNINGTON® SELECT THISTLE SEED

- Enriched with Bird-Kote® coating
- Great for year-round feeding
- Attracts Finches, Siskins, Chickadees
- High oil content

ITEM#	UPC	CS/PK
541806	0-21496-29950-1	6/5 lb
541823	0-21496-11139-1	5/10 lb

# PENNINGTON®



## A. PENNINGTON® WOODPECKER TREAT BAR

- Premium Blend of Woodpecker Food
- Ready to hang, instant feeder
- Sealed for freshness
- Contains Woodpecker favorites such as sunflower, peanuts, cracked corn, milo and more

ITEM#	UPC	CS/PK
515884	0-21496-00279-8	8/11 oz



## B. PENNINGTON® GOURMET LONG LASTING CAKE

- Convenient and easy to use
- Creates less mess than loose seed
- Long Lasting
- Attracts a wide variety of birds like Cardinals, Chickadees, Titmice and more

ITEM#	UPC	CS/PK
515885	0-21496-00283-5	6/2 lb



# PENNINGTON®



## A. PENNINGTON® SELECT NUT & FRUIT TREAT BELL

- Ready to hang treat with a special blend that attracts a wide variety of birds

ITEM#	UPC	CS/PK
100543804	0-21496-00284-2	4/15 oz



## B. PENNINGTON® MEALWORM POUCH WILDBIRD FOOD

- A high energy treat!
- Attracts Bluebirds, Songbirds, Chickadees, Woodpeckers, Wrens, Robins & more

ITEM#	UPC	CS/PK
100536257	0-21496-01967-3	4/17.6 oz
100541184	0-21496-02196-6	4/2 lb
100541185	0-21496-02197-3	6/5 lb



## C. PENNINGTON® SEED & MEALWORM TREAT CAKE

- Attracts Bluebirds, Songbirds, Chickadees, Woodpeckers, Wrens, Robins & more
- A high energy treat for all Wildbirds
- Easy way to feed Mealworms

ITEM#	UPC	CS/PK
100536255	0-21469-01966-6	6/1.4 lb

# PENNINGTON®



## A. PENNINGTON® CLASSIC WILD BIRD FEED

- Enriched with Bird-Kote® coating
- Contains wholesome grains in the proper ratio that wild birds prefer

ITEM#	UPC	CS/PK
100511836	0-21496-11124-7	12/3.5 lb
515772	0-21496-00111-1	6/10 lb
515830	0-21496-00122-7	105/20 lb
515846	0-21496-00249-1	25 lb
515828	0-21496-00123-4	40 lb
515872	0-21496-00150-0	50 lb



## B. PENNINGTON® CLASSIC BLACK OIL SUNFLOWER SEED

- Enriched with Bird-Kote® coating
- Fruit flavored
- Great for year-round feeding from feeders, trays, or on the ground
- Attracts a wide variety of songbirds

ITEM#	UPC	CS/PK
515624	0-21496-00052-7	25 lb



## C. PENNINGTON® CLASSIC SQUIRREL & CRITTER BLEND

- Enjoyed by squirrels and other backyard critters
- Enriched with Bird-Kote® coating
- A tasty treat including corn, sunflower and peanuts

ITEM#	UPC	CS/PK
515881	0-21496-00276-7	4/10 lb



## D. PENNINGTON® CLASSIC EAR CORN

- Great for feeding squirrels

ITEM#	UPC	CS/PK
100541084	0-21496-11322-7	4/6.5 lb



## E. PENNINGTON® CLASSIC SHELLED PEANUTS

- Excellent source of energy & protein
- Attracts a wide variety of wildlife including Woodpeckers, Blue Jays, Squirrels & more!
- Can be used on the ground to help keep squirrels away from bird feeders
- 100% Shelled Peanut Pieces

ITEM#	UPC	CS/PK
100541089	0-21496-02193-5	8/5 lb



## F. PENNINGTON® CLASSIC IN-SHELL PEANUTS

- Attracts a wide variety of wildlife including Chipmunks, Cardinals, Blue Jays & more!
- Nutritious Food with high levels of fat for energy and protein for growth & good health
- Can be used on the ground to help keep squirrels away from bird feeders

ITEM#	UPC	CS/PK
100541100	0-21496-02194-2	4/5 lb





### A. PENNINGTON® WILD BIRD FEED

- Enriched with Bird-Kote® coating
- Contains wholesome grains in the proper ratio that wild birds prefer

ITEM#	UPC	CS/PK
515721	0-21496-00106-7	12/5 lb
515825	0-21496-00121-0	3/20 lb

### B. PENNINGTON® SUNFLOWER SEED

- Enriched with Bird-Kote® coating
- Fruit flavored
- Great for year-round feeding from feeders, trays or on the ground
- Attracts a wide variety of songbirds

ITEM#	UPC	CS/PK
515572	0-21496-00005-3	6/5 lb



# A real treat for hummingbirds.

Natural Springs Nectar® product contains all natural mineral water that is enriched with the vitamins and minerals that Hummingbirds need to stay healthy.

## A. ELECTRONECTAR™

Ready-To-Use

- Mimics flower nectar with added electrolytes
- No artificial colors
- Ready to use
- Helps to keep the hummingbirds healthy and hydrated

ITEM#	UPC	CS/PK
100543828	0-21496-02297-0	6/64 fl. oz.

## B. NATURAL SPRINGS NECTAR® HUMMINGBIRD FOOD WITH NATURAL RED COLORING

Ready-To-Use

- Colored with natural red carmine
- Ready to use straight from the bottle
- No artificial dye hummingbird nectar

ITEM#	UPC	CS/PK
100541187	0-21496-02199-7	6/64 fl. oz.

## C. NATURAL SPRINGS NECTAR® HUMMINGBIRD FOOD

Ready-To-Use

- No mixing required
- Enriched with vitamins & minerals

ITEM#	UPC	CS/PK
100080659	0-21496-00750-2	6/64 fl. oz.



# PENNINGTON®



## A. NATURAL SPRINGS NECTAR® HUMMINGBIRD FOOD Concentrate

- Enriched with vitamins & minerals
- No sugar needed
- Makes up to 64 ounces

**ITEM#**      **UPC**      **CS/PK**  
548403      0-21496-00749-6      12/16 fl. oz.

## B. ELECTRONECTAR™ HUMMINGBIRD FOOD Concentrate

- Mimics flower nectar with added electrolytes
- Makes up to 64 ounces
- No artificial colors
- Helps to keep the hummingbirds healthy and hydrated

**ITEM#**      **UPC**      **CS/PK**  
100547732      0-21496-02856-9      12/16 fl. oz.

## C. NATURAL SPRINGS NECTAR® HUMMINGBIRD FOOD WITH NATURAL RED COLORING Concentrate

- Colored with natural red carmine
- Contains no artificial dyes
- Makes up to 64 ounces

**ITEM#**      **UPC**      **CS/PK**  
100547731      0-21496-02855-2      12/16 fl. oz.





INTEGRATING THE WARMTH OF TRADITIONAL  
TERRA COTTA WITH CONTEMPORARY SILHOUETTES

# Terra Cotta





A



B



### A. PENNINGTON® FERN/AZALEA POT, TERRA COTTA

- Most natural planter available
- Terra Cotta material helps balance the pH level of the soil for healthier plants
- Porous texture allows soil and roots to receive ample amounts of oxygen
- Drainage hole protects plants from over watering
- Saucer sold separately

ITEM#	UPC	CS/PK	DIMENSIONS
100043025	0-29501-20316-1	20	7 x 4.75
100043027	0-29501-20320-8	12	8.25 x 5.5
100043032	0-29501-20336-9	1	14.5 x 9

## Enhance your home & garden décor.

Terra cotta is one of the oldest traditions in pottery. Our terra cotta products are natural and eco-friendly, made from clay harvested from the earth and fired at over 2,000 degrees.

Other than planting directly into the ground, terra cotta is the most natural medium to plant in. It allows the soil to receive ample amounts of oxygen for plant growth and balances the temperature of the soil for healthier plants. The porous material allows moisture in and out.

### B. PENNINGTON® STANDARD POT, TERRA COTTA

- Most natural planter available
- Terra Cotta material helps balance the pH level of the soil for healthier plants
- Porous texture allows soil and roots to receive ample amounts of oxygen
- Drainage hole protects plants from over watering
- Saucer sold separately

ITEM#	UPC	CS/PK	DIMENSIONS
100506840	0-39083-58951-5	80	2 x 2
100043011	0-29501-20110-5	24	4.25 x 4
100043013	0-29501-20115-0	20	6 x 5.25
100043015	0-29501-20120-4	12	8.25 x 7.5
100528519	0-29501-20126-6	8	10 x 8.5
100043019	0-29501-20130-3	1	12 x 11
100043020	0-29501-20136-5	1	14 x 11
100043021	0-29501-20142-6	1	16.5 x 14.25



A



B



### A. PENNINGTON® HEAVY RIMMED POT, TERRA COTTA

- Terra Cotta material helps balance the pH level of the soil for healthier plants
- Porous texture allows soil and roots to receive ample amounts of oxygen
- Drainage hole protects plants from over watering
- Pot feet sold separately to help with proper ventilation/drainage

ITEM#	UPC	CS/PK	DIMENSIONS
100043002	0-29501-80881-6	1	18.5 x 16.5
100043004	0-29501-80883-0	1	22 x 19.75

### B. PENNINGTON® CABO FLAIR POT, TERRA COTTA

- Wide opening makes for easier potting and holds a variety of plants
- Terra cotta material helps balance the pH level of the soil for healthier plants
- Porous texture allows soil and roots to receive ample amounts of oxygen
- Drainage hole protects plants from over watering
- Saucer sold separately

ITEM#	UPC	CS/PK	DIMENSIONS
100523385	0-21496-01624-5	16	4.75 x 4.25
100523386	0-21496-01625-2	12	6.75 x 5.5
100523387	0-21496-01626-9	6	7.5 x 7
100523388	0-21496-01627-6	4	10.25 x 9.5





### A. PENNINGTON® ORCHID POT, TERRA COTTA

- Most natural planter available
- Terra Cotta material helps balance the pH level of the soil for healthier plants
- Perfect for orchids allowing proper aeration for roots
- Drainage hole protects plants from over watering

ITEM#	UPC	CS/PK	DIMENSIONS
100043055	0-29501-12014-7	1	6.75 x 4.75

### B. PENNINGTON® DISH GARDEN, TERRA COTTA

- Most natural planter available
- Terra cotta material helps balance the pH level of the soil for healthier plants
- Porous texture allows soil and roots to receive ample amounts of oxygen
- Drainage hole protects plants from over watering
- Saucer sold separately

ITEM#	UPC	CS/PK	DIMENSIONS
100021298	0-29501-20530-1	1	12.25 x 4.25

### C. PENNINGTON® PLAIN WINDOW BOX, TERRA COTTA

- Most natural planter available
- Terra cotta material helps balance the pH level of the soil for healthier plants
- Porous texture allows soil and roots to receive ample amounts of oxygen
- Drainage hole protects plants from over watering

ITEM#	UPC	CS/PK	DIMENSIONS
100021299	0-39083-58644-6	1	13 x 5.5



A



**A. PENNINGTON® 2-GALLON POCKET PLANTER, TERRA COTTA**

- 6-pocket planter ideal for strawberries, succulents and herbs
- Helps balance the pH level of the soil for healthier plants
- Drainage hole protects plants from over watering
- Porous texture allows soil and roots to receive ample amounts of oxygen

ITEM#	UPC	CS/PK	DIMENSIONS
100043142	0-39083-18502-1	1	7.5x13.25

B



**B. PENNINGTON® POT FEET, TERRA COTTA 3-PACK DISPLAY**

- Elevates planters to allow for proper ventilation
- Coordinates with any standard terra cotta pot
- Pack of 3

ITEM#	UPC	CS/PK	DIMENSIONS
100012662	0-47625-12662-3	16	1.5x2.5

C



**C. PENNINGTON® SAUCER, TERRA COTTA**

- Helps protect surfaces from over watering
- Matches the Pennington® standard terra cotta pots

ITEM#	UPC	CS/PK	DIMENSIONS
100043034	0-29501-20210-2	24	4.25x 0.75
100043036	0-29501-20214-0	20	6x1
100043039	0-29501-20220-1	12	8x1
100043041	0-29501-20224-9	1	10x1.25
100519845	0-29501-20230-0	8	12.25x1.5
100519846	0-29501-20235-5	6	14x1.75
100519847	0-29501-20240-9	4	16.25x2





# Table of Contents

Animal & Rodent Control.....	89
Bird Feeders & Houses.....	103
Bird Food & Nectar.....	121
Forage.....	99
Fungicides.....	57
Grass Seed.....	03
Grass/Weed Control.....	43
Lawn Fertilizer/Soil Amendments.....	23
Moss Control.....	51
Multi-Insect Control.....	63
Multi-Purpose Control.....	59
Patch & Repair.....	17
Plant Fertilizer.....	31
Rooting Hormone.....	41
Seeding Accessories.....	21
Slug & Snail Control.....	87
Targeted Insect Control.....	77
Terra Cotta.....	135
Wildlife.....	93

## Bird Food

### PENNINGTON® PRODUCTS

Pennington® Classic.....	131
Pennington® Hummingbird Nectar.....	133
Pennington® Premium Select.....	126
Pennington® Pride Wild Bird Feed.....	122
Pennington® Select.....	127
Pennington® Sunflower Seed.....	132
Pennington® Ultra.....	125
Pennington® Wild Bird Feed.....	132

## Bird Feeders

### PENNINGTON® PRODUCTS

Accessories.....	119
Bird Houses.....	104
Cedar Feeders.....	118
Hummingbird Feeders.....	116
Pennington Pride™ Bird Houses.....	106
Pennington Pride™ Feeders.....	104
Pennington Pride™ Hummingbird Feeder.....	105
Plastic Feeders.....	113
Recycled Feeders Pennington® EarthSmart™.....	114
Metal Bird Feeders.....	115

## Fertilizer Treatments

### ALASKA® PRODUCTS

Fish Fertilizer 5-1-1.....	36
Morbloom 0-10-10.....	36

### IRONITE® PRODUCTS

Ironite® Liquid Lawn & Garden Spray 7-0-1.....	26
Ironite® Mineral Supplement 1-0-0.....	26
Ironite® Plus 12-10-10 Plant Food.....	26

### LILLY MILLER® PRODUCTS

16-16-16 Lawn & Garden Food All Purpose.....	27
All Purpose Planting & Growing Food 10-10-10.....	38
Bone Meal 6-12-0.....	38
Bulb & Bloom Food 4-10-10.....	38
Citrus & Avocado Food 10-6-4.....	39
Morcrop Tomato & Vegetable Food 5-10-10.....	39
Rhododendron, Evergreen & Azalea Food 10-5-4.....	39
Rose & Flower Food 5-8-4.....	39

### PENNINGTON® LAWN FERTILIZER PRODUCTS

Full Season™ <sup>1</sup> Lawn Fertilizer 32-0-5.....	24
Full Season™ <sup>2</sup> Southern Weed & Feed 25-0-14.....	24
Full Season™ <sup>1</sup> Weed & Feed with Crabgrass Control 25-0-8.....	24

### PENNINGTON® LIQUID PLANT FOOD PRODUCTS

All Purpose Plant Food 2-3-2.....	35
Plant Starter.....	35

### PENNINGTON® PROCARE® PRODUCTS

ProCare® All-Purpose Water Soluble 24-8-16.....	37
ProCare® Crabgrass & Weed Preventer.....	29
ProCare® Indoor & Outdoor All Purpose 19-6-12 Plant Food.....	37
ProCare® Lawn Fertilizer 28-0-4.....	30
ProCare® Lawn Weed Control.....	29
ProCare® Natural 4-3-0.....	29
ProCare® Southern Weed & Feed 18-0-18.....	30
ProCare® Weed & Feed 25-0-4.....	30

### PENNINGTON® REJUVENATE™ PRODUCTS

Plant Food All Purpose 4-4-4.....	32
Plant Food All Purpose 4-4-4 Shaker Bottle.....	34
Plant Food Citrus & Avocado 5-3-4.....	33
Plant Food Evergreen & Azalea 4-3-3.....	33
Plant Food Rose & Flower 4-6-3.....	33
Plant Food Tomato & Vegetable 4-5-4.....	32
Plant Food Tomato & Vegetable 4-5-4 Shaker Bottle.....	34

### PENNINGTON® WATER SOLUBLE PLANT FOOD PRODUCT

Pennington® Water Soluble All-Purpose Plant Food 20-10-20.....	34
--	----

### ROOTBOOST™ PRODUCT

Rooting Hormone.....	42
----------------------	----

## Forage

### PENNINGTON® PRODUCTS

Cheyenne II Bermudagrass - Warm Season Perennial.....	101
Durana White Clover - Cool Season Perennial Legume.....	102
Jesup MaxQII® Tall Fescue - Cool Season Perennial Grass.....	100
Lacefield MaxQII® Tall Fescue - Cool Season Perennial Grass.....	100
Mohawk Bermudagrass - Warm Season Perennial.....	101
Passerel Plus Annual Ryegrass - Annual Grass.....	102
Texoma MaxQII® Tall Fescue - Cool Season Perennial Grass.....	100
Tierra Verde All Purpose Bermudagrass - Warm Season Perennial.....	101
Wintergrazer 70 Rye - Cool Season Annual Grass.....	102



# Grass Patch & Repair

## PENNINGTON® SEED PRODUCTS

Bare Spot Repair .....	20
------------------------	----

## PENNINGTON® SMART PATCH PRODUCTS

Smart Patch for Bermudagrass.....	18
Smart Patch for Centipede .....	19
Smart Patch for Dense Shade.....	18
Smart Patch for Sun & Shade .....	18
Smart Patch for Tall Fescue.....	18
Smart Patch Zenith Zoysia .....	19

## SEEDING ACCESSORIES PRODUCTS

Seed Starter Mat .....	22
------------------------	----

# Grass Seed

## LAWN BOOSTER™ PRODUCTS

Sun & Shade.....	14
Tall Fescue.....	14

## PENNINGTON® SEED PRODUCTS

Annual Ryegrass.....	13
Argentine Bahiagrass.....	13
Bermudagrass.....	13
Centipede .....	12
Contractors Mix.....	11
Kentucky 31 Tall Fescue.....	11
Pensacola Bahiagrass.....	13
Zenith Zoysia.....	12

## THE REBELS BRAND® PRODUCTS

Shady Lawn Mix.....	10
Tall Fescue Blend.....	10

## SMART SEED® PRODUCTS

Bermudagrass.....	07
Clover + Grass Mix.....	15
Dense Shade.....	06
Kentucky Bluegrass.....	06
Northeast Mix.....	08
Ohio State Mix.....	08
Pacific Northwest Mix.....	08
Pennsylvania State Mix.....	08
Perennial Ryegrass .....	06
Pro Sun & Shade.....	09
Pro Tri Fescue.....	09
Southern Sun & Shade.....	05
Sun & Shade.....	05
Texas Bermudagrass.....	07

# Herbicides & Fungicides

## CORRY'S® PRODUCT

Moss B Ware® .....	52
--------------------	----

## DACONIL® PRODUCTS

Fungicide Concentrate .....	58
Fungicide Ready-To-Use.....	58

## IMAGE® HERBICIDES PRODUCTS

Brush & Vine Killer.....	48
Casoron® Weed + Grass Preventer Granules.....	49
Crabgrass, Nutsedge* & Weed Killer for Lawns .....	44
Crabgrass & Weed Killer for Lawns.....	47
Noxall® Weed + Grass Killer Granules.....	49
Nutsedge Killer for Southern Lawns .....	45
Weed Killer for Southern Lawns.....	46

## MOSS OUT!® PRODUCTS

MossOut!® for Lawns Granules .....	54
Moss Out!® for Lawns Liquid.....	53
Moss Out!® for Roofs and Structures .....	56
Moss Out!® Plus Fertilizer For Lawns 20-0-5.....	54
Moss Out!® Roofs & Walks.....	56
Moss Out!® Spot Treater For Lawns & Flower Beds .....	55

# Pest Control Products

## AMDRO® PRODUCTS

Ant Killer Bait Stations/Ant Killer Bait Stakes.....	84
Ant Killer for Outdoor Home Perimeter .....	83
Fire Ant Killer for Lawns .....	79
Fire Ant Killer for Mounds.....	80
Fire Ant Killer Yard Spray .....	81
Gopher Gasser.....	91
Gopher Trap.....	91
Mole* & Gopher** Bait .....	91
Mouse Trap.....	90
Quick Kill Ant & Spider Killer Shaker Bag.....	75
Quick Kill Brand Lawn Insect Killer Granules.....	73
Quick Kill Indoor/Outdoor Carpenter Bee, Ant & Termite Killer Foam .....	85
Quick Kill Indoor/Outdoor Carpenter Bee, Ant & Termite Killer RTU.....	85
Quick Kill Insect Killer For Home Perimeter .....	72
Quick Kill Insect Killer For Lawn & Landscape Concentrate .....	74
Quick Kill Insect Killer For Lawn & Landscape Ready To Spray .....	74
Rat Trap.....	90
Tick Killer Yard Spray .....	86

## Pest Control Products (Cont'd)

### CORRY'S® PRODUCT

Slug & Snail Killer .....	88
---------------------------	----

### KNOCKOUT™ PRODUCTS

Ant, Flea & Tick Killer <sup>fl</sup> Granules .....	76
Fire Ant Killer Dust .....	82
Fire Ant Killer Plus! Granules .....	82

### OVER'N OUT!® ADVANCED PRODUCT

Fire Ant Killer .....	78
-----------------------	----

### SEVIN® PRODUCTS

Garden Perimeter Insect Killer Granules .....	65
Insect Killer Concentrate .....	68
Insect Killer Dust .....	66
Insect Killer Lawn Granules .....	67
Insect Killer Ready To Spray .....	69
Insect Killer Ready To Use <sub>2</sub> .....	70

## Pest Control + Fungicide Products

### SEVIN® PRODUCTS

3-in-1 Insect, Mite, & Disease Control Flower & Shrub Ready to Spray .....	61
Sulfur Dust .....	60

## Soil Amendments

### LILLY MILLER® PRODUCTS

Super Sweet™ .....	28
--------------------	----

### PENNINGTON® PRODUCTS

Epsom Salt Plant Nutrient .....	25
---------------------------------	----

## Terra Cotta

### PENNINGTON® PRODUCTS

2 Gallon Pocket Planter, Terra Cotta .....	139
Cabo Flair Pot, Terra Cotta .....	137
Dish Garden, Terra Cotta .....	138
Fern/Azalea Pot, Terra Cotta .....	136
Heavy Rimmed Pot, Terra Cotta .....	137
Orchid Pot, Terra Cotta .....	138
Plain Window Bow, Terra Cotta .....	138
Pot Feet, Terra Cotta 3 Pack Display .....	139
Saucer, Terra Cotta .....	139
Standard Pot, Terra Cotta .....	136

## Wildlife

### RACKMASTER® PRODUCTS

Rackmaster® Clover Trio .....	96
Rackmaster® Deer Greens .....	96
Rackmaster® Deluxe Fall Deer Mixture .....	97
Rackmaster® Dual Season .....	94
Rackmaster® Durana White Clover .....	95
Rackmaster® Feeding Frenzy® .....	97
Rackmaster® Mississippi Complete .....	97
Rackmaster® Spring Summer Deluxe .....	97
Rackmaster® Trophy Radishes .....	96





## Trademark Information

Alaska; Alaska with design; Amdro; Amdro Quick Kill; Central Garden & Pet; Central Garden & Pet with design; Great Entertainment For Your Yard with design; Image; Ironite; Lilly Miller; Lilly Miller with design; Moss Out!; Noxall; and Super Sweet are trademarks of Central Garden & Pet Company.

Bird-Kote; Earth Smart; Ecobistro; Ecozebo; ElectroNectar; ER Extended Root Seed Varieties with design; Feeding Frenzy; Full Season; Knockout; Lawn Booster; Natural Springs Nectar; Penkoted; Pennington; Pennington with design; Pennington Pride; Pennington Pride with design; Pennington Seed with design; Pennington Estd 1945 Nurture Your Roots with design; Procare; Rackmaster; RapidResults; Rejuvenate; SeedFuel; Smart Seed; Supergraze; The Bird Feed People; The Grass is Greener; The Rebels; and The Rebels Brand are trademarks of Pennington Seed, Inc.

Casoron is a registered trademark of Chemtura Corporation.

Corry's; Corry's with design; and Moss B Ware are trademarks of Matson, LLC.

Daconil is a registered trademark of GB Biosciences Corp.

GardenTech and GardenTech with design are trademarks of Gulfstream Home & Garden, Inc.

RootBoost; and Over'n Out! are trademarks of Tech Pac, L.L.C.

Hormodin is a registered trademark of OHP, Inc.

MaxQ and MaxQ II are registered trademarks of Grasslanz Technology Limited.

Sevin is a registered trademark of Tessenlerlo Kerley, Inc.

Advanced Soil Technology; Fast Acting and AST are trademarks of EnCap, LLC.

Birder's Blend and Waste Free are registered trademarks of Kaytee Products, Incorporated.

Trimec is a registered trademark of PBI-Gordon Corporation.