



**RADIANS**<sup>®</sup>



**PERSONAL PROTECTIVE EQUIPMENT**  
DIY · LAWN+GARDEN · FARM+RANCH · CONSTRUCTION



**WORK HARD. STAY SAFE.<sup>®</sup>**



## LEADING THE WAY TO A SAFER TOMORROW

At Radians, we are on a mission to protect lives worldwide by manufacturing high quality Personal Protective Equipment (PPE). With over 25 years of expertise, we offer a comprehensive line of safety products for the retail marketplace, including hardware, DIY, lawn and garden, farm and ranch, and construction.

Understanding the unique needs of big box and mom-and-pop retailers, Radians is committed to delivering exceptional value by offering worldwide-recognized brands, competitive pricing, low minimum orders, flexible ordering options, and efficient distribution channels that ensure timely delivery of our PPE products.

Our dedicated customer support team collaborates closely with retailers to provide personalized service and expert guidance on product selection and merchandising strategies. Radians' detailed planograms and point-of-sale displays ensure that retailers can effectively showcase our PPE products to enhance brand visibility and drive sales.

Our commitment to operational excellence, quality assurance, and unwavering dedication ensures our products meet or exceed the highest safety standards, empowering people to conduct their daily tasks confidently and compliantly, whether at work, home, or play. By partnering with Radians, retailers can provide their customers with reliable PPE solutions that enhance safety and peace of mind while helping retailers succeed and thrive in a competitive marketplace.



**Thank you for choosing Radians  
as your partner in safety.**

**Bill England**  
President | Radians

## PRODUCTS THAT JOBSITES REQUIRE



## BRANDS YOU TRUST





# USA MANUFACTURING

**QUALITY. VALUE. AVAILABILITY.** The last couple of years have driven home the importance of manufacturing safety products in the USA. Choosing American-made personal protective equipment ensures top-notch quality, great value, and stable availability, supporting local industries and reducing supply chain uncertainties.

Radians has known this for over a decade now, so we have been consistently expanding our capabilities in this area at multiple facilities. You have our solemn pledge that we will continue to move forward in this critical area by manufacturing more products in America.

## LICENSED PARTNERSHIP

Since 2003, we've proudly crafted premium personal protective equipment bearing the prestigious DEWALT brand. These products are designed to deliver superior protection, offering advanced features for durability, comfort, and safety.

## SUSTAINABILITY

At Radians, our commitment to sustainability extends beyond our own operations to include our entire supply chain. Our suppliers play a crucial role in our sustainability journey, reflecting our shared dedication to environmental responsibility.

- 1. Supplier Engagement and Renewable Energy Initiatives:** Our suppliers are integral to our sustainability efforts, with many adopting robust sustainability policies, including fabric and yarn recycling, energy-efficient product designs, and social compliance standards like BSCI and WRAP. Significant strides are being made in renewable energy adoption, with several factories now powered by solar and biomass fuels, alongside energy conservation measures.
- 2. Waste and Water Management:** Our suppliers are dedicated to effective waste management practices, aiming to reduce waste by 10% annually through recycling and proper hazardous waste disposal. They also prioritize water conservation by using water-efficient fixtures, recycling systems, and training employees on responsible water usage.
- 3. Sustainable Sourcing and Continuous Improvement:** Over 60% of our suppliers use recycled materials and FSC-certified packaging, with plans to increase sustainable sourcing. Continuous improvement efforts focus on advanced energy-efficient technologies, expanding renewable energy use, and strengthening partnerships with sustainable suppliers.

By working closely with our suppliers, we are committed to reducing our environmental impact and promoting a more sustainable future. Join us in our journey towards a greener future.

## TESTING AND QUALITY

Personal protective equipment is a critical aspect of ensuring worker safety and is the last line of defense against injury. Its effectiveness relies heavily on adherence to regulatory standards. Non-certified PPE poses significant risks, potentially undermining comprehensive safety programs, exposing workers to injuries and employers to legal liabilities.

You can trust Radians products. We prioritize quality, subjecting our gear to rigorous testing and certification processes to meet and exceed all regulatory standards.

### RADIANS IN-HOUSE TESTING CAPABILITIES

Our in-house eyewear testing facility and state-of-the-art hearing protection laboratory, accredited by the National Voluntary Laboratory Accreditation Program (NVLAP Lab 500090-0), allows us to test eyewear and hearing protection devices to ensure they meet the S3.19 and S12.6 standards. This comprehensive testing ensures our products provide the highest level of protection in any industrial setting.

### THIRD-PARTY TESTING

Third party laboratories subject PPE to rigorous testing, often under conditions that are more demanding than those found in the workplace. Radians partners with these labs to test our comprehensive product lineup, including safety glasses, high visibility materials, fire retardant materials, European Union products, and gloves engineered to withstand cuts, abrasions, punctures, and impact.

### QUALITY ASSURANCE

The International Organization for Standardization (ISO) 9001:2015 specifies requirements for a quality management system where an organization needs to demonstrate its ability to consistently provide product that meets customer and applicable statutory and regulatory requirements.

Our ISO 9001 certification requires 3rd party audit of Radians' Quality Management System to internationally recognized requirements and reinforces our commitment to customer focus, including the manufacture and distribution of quality personal safety products.



# CONTENTS

<b>DEWALT GEAR</b>	<b>1</b>
2 HEATED JACKETS	
3 HEATED HOODIES	
4 WORK GLOVES	
6 GLOVE MERCHANDISING	
9 HIGH VISIBILITY/RAINWEAR	
10 PROTECTIVE EYEWEAR	
13 HEARING PROTECTION	
14 HEADGEAR	
<b>STANLEY</b>	<b>16</b>
16 SAFETY GEAR	
<b>CROSSFIRE EYEWEAR</b>	<b>17</b>
17 PREMIUM EYEWEAR	
<b>RADIANS</b>	<b>19</b>
19 SAFETY EYEWEAR	
21 HEADGEAR	
22 HEARING PROTECTION	
<b>RADWEAR</b>	<b>24</b>
24 HI-VIS CLASS 2	
26 HI-VIS CLASS 3	
27 NON-RATED	
27 WORK GLOVES	
28 RAINWEAR	
<b>ARCTIC RADWEAR COOLING</b>	<b>30</b>
30 TOWELS/WRAPPS	
30 HEAD SHADE	
<b>NORDIC BLAZE WARMING</b>	<b>31</b>
31 BALACLAVAS	
<b>LENS CLEANING</b>	<b>31</b>
31 LENS CLEANING	
<b>BELLINGHAM GLOVES</b>	<b>32</b>
32 ECO FRIENDLY	
34 PERFORMANCE	
35 LEATHER	
35 INSULATED LEATHER	
36 INSULATED	
37 COATED	
41 PLANOGRAMS/DISPLAYS	
<b>IMPRINTING</b>	<b>45</b>

**DEWALT®**



**GUARANTEED TOUGH.®**

# TOUGH PROTECTION FOR DEMANDING JOBSITES

Recognized around the world, DEWALT has always had the toughest tools to help you get the job done. With DEWALT protective gear, now you can make sure that the toughest jobs are done safely. DEWALT protective gear is engineered for comfort, durability, and above all, safety.

## HAND PROTECTION

DEWALT gloves are crafted with durability, comfort, protection, and performance in mind. Available in a variety of categories, including cold weather, performance, cut protection, leather, and coated, there's a DEWALT glove prepared to meet the tough demands of your jobsite.

## EYE PROTECTION

Eyeglasses are not safety glasses unless both the lenses and frame comply with the specifications for safety eyewear described in the ANSI Z87.1-2020 standard. There are a variety of DEWALT safety eyewear available, including performance, foam-lined, anti-fog, magnified, polarized, and goggle solutions.

## HEARING PROTECTION

Hearing loss is permanent. DEWALT hearing protection offers several products that help combat noisy environments. From disposable foam earplugs to Bluetooth earmuffs, turn to DEWALT to protect your hearing.

## HIGH VISIBILITY PROTECTION

The need to be seen is a critical issue for worker safety, especially for workers who perform tasks on or near moving vehicles or equipment. From vests to sweatshirts, DEWALT offers hi-vis apparel that keeps you visible, protected, and allows you to perform at your best.

## HEAD PROTECTION

Protecting your head is vital. On most job sites, hard hats and safety helmets are often the only line of defense against head injuries. DEWALT has you covered with Type I and Type II head protection solutions.

## HEATED GEAR

Available in men's and women's styles, DEWALT Heated Gear, powered by the DEWALT 20V MAX\* XR 2.0 Ah battery, provides hours of warmth and comfort in cold temperatures. The carbon fiber heating system delivers up to nine hours of core body warmth and continuous heat.



# DEWALT®

## TOUGH ON COLD

DEWALT Heated Gear, powered by the DEWALT® 20V MAX\* XR 2.0 Ah battery, provides hours of warmth and comfort in cold temperatures. The carbon fiber heating system delivers up to nine hours of core body warmth and continuous heat\*\*. Designed and constructed to be **GUARANTEED TOUGH®** for the rugged and tireless worker.



**LED CONTROLLER OFFERS  
3 TEMPERATURE SETTINGS  
WITH PRE-HEAT FUNCTION**



**USB PORT FOR CHARGING  
PORTABLE ELECTRONICS**



**INCLUDES CONVENIENT  
BATTERY FUEL GAUGE**



**MULTIPLE LOCATIONS FOR BATTERY  
OR ELECTRONIC DEVICE\***

## HEAT ZONE VARIATIONS



**5 HEAT ZONES  
LEFT AND RIGHT CHEST,  
BOTH ARMS AND MID-BACK**



**4 HEAT ZONES  
LEFT AND RIGHT CHEST,  
COLLAR AND MID-BACK**



**3 HEAT ZONES  
LEFT AND RIGHT CHEST,  
AND MID-BACK**



**UP TO 9 HOURS  
OF CORE BODY WARMTH  
AND CONTINUOUS HEAT\*\***



**WATER + WIND RESISTANT  
OUTER SHELL**



**WIND RESISTANT  
OUTER SHELL**

\*MALE + FEMALE CONNECTORS MUST BE JOINED TO USE INTERIOR POWER PLUG

\*\*Battery pocket accepts 20V MAX\* XR lithium-ion batteries which improves run time by up to 25%. (At maximum initial battery voltage, as compared to 1.5 Ah DCB201).  
Up to 5.5 Hours of runtime on low setting using the 20V MAX\* compact 1.5 Ah battery

# GUARANTEED TOUGH®

**WARNING:** Cancer and reproductive harm - www.P65warnings.ca.gov

## MEN'S LIGHTWEIGHT PUFFER JACKET

**DCHJ093**

Part Number: DCHJ093D1-(size)

Sizes: S - 3X

- Wind and water resistant polyester shell
- Polyester lining
- Lightweight for packability
- Pockets: 1 left chest vertical water proof zip phone pocket, 1 each side lower front vertical waterproof zippered handwarmer pockets, 1 outer lower back left battery pocket, 1 inner left chest vertical zip battery pocket, 1 lower inside left phone/battery pocket with hook/loop closure
- Includes: Battery, Charger and USB Power Adapter



## WOMEN'S LIGHTWEIGHT PUFFER VEST

**DCHV094**

Part Number: DCHV094D1-(size)

Sizes: XS - 2X

- Wind and water resistant polyester shell
- Polyester Lining
- Lightweight for packability
- Pockets: 1 left chest vertical water proof zip phone pocket, 2 lower front vertical waterproof zippered handwarmer pockets, 1 outer lower back left battery pocket, 1 inner left chest vertical zip battery pocket, 1 lower inside left phone/battery pocket with hook/loop closure
- Includes: Battery, Charger and USB Power Adapter



## STRUCTURED SOFT SHELL

**DCHJ090B**

Part Number: DCHJ090B-(kit)-(size)

Sizes: S - 3X

- Multiple pockets including cell phone and sleeve pockets
- Toggle pull adjustable waist
- Waterproof zippers
- Full coverage drop tail hem
- Complete Kit (D1) includes: Jacket, Battery, Charger and USB Power Adapter
- Bare Kit (B) includes: USB Power Adapter only



## WOMEN'S HOODED

**DCHJ066**

Part Number: DCHJ066C1-(size)

Sizes: XS - 2XL

- Soft water and wind resistant polyester blend outer shell
- Removable, adjustable hood
- Zipper wind guard
- Multiple pockets, including chest cell phone pocket
- Complete Kit (C1) includes: Battery, Charger and USB Power Adapter



## SOFT SHELL

**DCHJ060A**

Part Number: DCHJ060AB(kit)-(size)

Sizes: S - 3X

- Insulated woven outer shell
- Warm fleece polyester lining
- Adjustable cuffs and waist
- Multiple pockets including phone pocket
- Front zipper with internal wind guard
- Low funnel neck with chin guard
- Complete Kit (D1) includes: Jacket, Battery, Charger and USB Power Adapter
- Bare Kit (B) includes: USB Power Adapter only



## HEAVY-DUTY DUCK

**DCHJ076A**

Part Number: DCHJ076A(color)(kit)-(size)

Sizes: S - 3X Colors: Black (B), Tobacco (T)

- Durable heavy-duty duck fabric outer shell
- Warm fleece polyester lining
- Gusseted underarms and stretch back for full range of movement
- Multiple pockets including fleece lined riveted front pouch pockets
- Complete Kit (D1) includes: Jacket, Battery, Charger and USB Power Adapter
- Bare Kit (B) includes: USB Power Adapter only



## REVERSIBLE FLEECE VEST

**DCHV086B**

Part Number: DCHV086BD1-(size)

Sizes: S - 3X

- Reversible polyester fleece to Sherpa fleece
- Extended collar for extra coverage
- 8 pockets for convenient storage include chest pockets and zipper pockets
- Drop tail hem for full coverage
- Complete Kit (D1) includes: Jacket, Battery, Charger and USB Power Adapter



REVERSES TO SHERPA FLEECE

## REALTREE XTRA® CAMO HOODIE

**DCHJ074**

Part Number: DCHJ074D1-(size)

Sizes: S - 3X

- Heavyweight & durable wind resistant Realtree Xtra® camouflage cotton/polyester blend fleece outer shell
- Warm thermal waffle knit fleece cotton/polyester lined torso and hood
- Rib knit cuffs and waistband
- Multiple pockets including 2 large fleece pockets
- Complete Kit (D1) includes: Jacket, Battery, Charger and USB Power Adapter



RealTree marks and logos are trademarks of Jordan Outdoor Enterprises, Ltd.

## MEN'S FLEECE HOODIE

**DCHJ067**

Part Number: DCHJ067B-(size)

Sizes: S - 3X

- Durable wind resistant cotton, polyester outer shell
- Waffle knit lining
- Built-in hood with adjustable drawstrings
- 3 total pockets: L&R waist, Inside Left Chest
- Bare Kit (B) includes: USB Power Adapter only



## MEN'S FRENCH TERRY HOODIE

**DCHJ080**

Part Number: DCHJ080B-(size)

Sizes: S - 3X

- Durable french terry cotton/polyester heathered grey outer shell
- Warm thermal waffle knit fleece polyester lined torso and hood
- Rib knit cuffs and waistband
- Multiple pockets including phone pocket
- Bare Kit (B) includes: USB Power Adapter only



## DHG-DISP-16

- Holds 16 heated jacket boxes
- Waterfall arm (9.58") to display apparel
- Rearrangeable hooks (includes 12-7" hooks)
- Easily move into desired location
- Dimensions: 19.34" x 19.49" x 71.12"

## QUARTER PALLET DISPLAY

- Flexible, modular display.
- Display comes with 3 trays.
- Each tray holds 4-5 boxes of complete or bare kits.
- Made of sturdy corrugate to last through selling season.

(Ask sales rep for ordering details)





## COLD WEATHER

### DPG737 M-XXL

#### 2-IN-1 CWS™ THERMAL GRIPPER

- Wicking Nylon Outer Shell
- Acrylic Thermal Liner
- Microfoam ¾ Dip and Palm



### DPG740 M-XL

#### MILD CONDITION FLEECE

- Wind/Water Resistant Shell
- Palm & Finger Overlays
- Reinforced Thumb Saddle



## LEATHER

### DPG32 M-XL

#### PREMIUM GRADE LEATHER DRIVER

- Split Leather Palm Overlay
- Elasticized Wrist
- Keystone Thumb



### DPG41 L

#### PREMIUM SPLIT LEATHER PALM

- Split Leather Knuckle Strap
- 2 ½" Rubberized Cuff
- Double Leather Palm



## DPG35 S-XL

### BREATHABLE AND WATER RESISTANT

- 15 Gauge Nylon Liner
- Fully Coated Nitrile
- Seamless Fit



EN388:2016  
4 - Abrasion  
1 - TDM-100 Cut  
2 - Tear  
1 - Puncture  
X - ISO Cut Test



## DPG70 M-XL

### TEXTURED RUBBER GRIP

- Breathable 10ga Knit Shell
- Textured Rubber Palm
- Seamless Fit



PART NUMBER SIZE  
DPG70L-3PK 3-pack L

CAUTION:  
Product Contains Latex

## DPG72T S-XL

### FLEXIBLE DURABLE GRIP

- Breathable, Flexible 13ga Nylon
- Double Dipped Flexible Coating
- Seamless Fit



## DPG73 L

### ULTRADEX® SMOOTH NITRILE GRIP

- Breathable 13ga Poly Shell
- Nitrile Palm Coating
- Elastic Cuff



PART NUMBER SIZE  
DPG73TL Tagged L



PART NUMBER SIZE  
DPG73L-3PK 3-pack L



## DPG74 M-XL

### MICRO-FOAM NITRILE GRIP

- 15 Ga Nylon/Spandex Shell
- Micro-Foam Nitrile Palm
- Touchscreen Capable



EN388:2016  
4 - Abrasion  
1 - TDM-100 Cut  
3 - Tear  
1 - Puncture  
A - ISO Cut Test



## DPG76 L-XL

### ULTRADEX® TREAD GRIP

- Breathable 13ga Knit Back
- Textured Nitrile Palm
- Ergonomic Design
- Seamless Fit



## DPG833T S-XL

### HI-VIS HPPE CUT TOUCHSCREEN

- 18 Ga Hi-Vis HPPE Shell
- Micro Foam Nitrile Palm
- Touchscreen Capable
- Oil & Water Resistant
- Reinforced Thumb Saddle
- Seamless Fit



EN388:2016  
4 X 4 1 B  
4 - Abrasion  
X - Coup Test/Cut  
4 - Tear  
1 - Puncture  
B - TDM-100 Test

Meets ANSI/ISEA 105:2016  
A2 3 2  
CUT/785g ABRASION PUNCTURE



## DPG855T S-XL

### HI-VIS HPPE FIBERGLASS CUT

- 13 Ga Hi-Vis HPPE Shell
- Foam Nitrile Palm
- Oil & Water Resistant
- Reinforced Thumb Saddle
- Seamless Fit



EN388:2016  
4 X 4 2 D  
4 - Abrasion  
X - Coup Test/Cut  
4 - Tear  
2 - Puncture  
D - TDM-100 Test

Meets ANSI/ISEA 105:2016  
A4 4 5  
CUT/1550g ABRASION PUNCTURE



## DPG20 M - XL

### ALL PURPOSE UTILITY

- Reinforced Finger Tips
- Padded Palm
- Neoprene Knuckle Guard
- Terry Cloth Brow Wipe
- Elastic Wrist Strap



## DPG200 M - XXL

### ALL PURPOSE PERFORMANCE

- Water & Oil Resistant Foam Padded Palm
- Reinforced Fingers & Thumb
- Neoprene Knuckle Guard
- Durable Double Stitching
- UlnaLock™ Secure Fit Wrist



## DPG201 M - XL

### ALL PURPOSE UTILITY

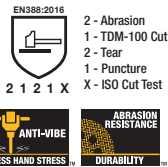
- Synthetic Leather Padded Palm and Finger Tips
- Spandex/Polyester Back
- PVC reinforced thumb crotch
- SecureFit™ Wrist Closure
- Spandex Fourchettes



## DPG210 M - XL

### HEAVY UTILITY PADDED

- Memory Gel Padded Palm
- Water/Oil Resistant PVC Overlays
- Reinforced Fingers & Thumb
- UlnaLock™ Secure Fit Wrist



## DPG211 M - XL

### ALL PURPOSE UTILITY

- Foam Padded Synthetic Leather Palm
- Spandex/Mesh Back
- Foam Padded Knuckle
- Neoprene Wrist with TPR Pull Strap
- Flexible Polyester Fourchettes
- 4 point finger tips



## DPG230 M - XL

### TECHNICIAN FINGERLESS

- High-Dexterity Fingerless Design
- Double Palm Overlay
- Neoprene Knuckle Guard
- Terry Cloth Brow Wipe
- ToughThread™ Double Stitching



## DPG250 M - XXL

### VIBRATION REDUCING PALM

- Premium Goatskin Leather Palm with Vibration Reducing Memory Gel Padding
- Padded Knuckle Guard
- Reinforced Fingers & Thumb
- Terry Cloth Brow Wipe



## DPG781 M - XL

### SYNTHETIC LEATHER PERFORMANCE

- Padded PVC Palm
- TPR Impact Guards\*
- PVC Fingertip Grips
- SecureFit™ Wrist Closure
- Thumb Saddle Reinforcements



\*US Patent #9,241,519



**DPG212 L-XL**

**PERFORMANCE DRIVER HYBRID**

- Rugged Reverse Leather Overlays
- Premium Grade Cowhide Leather
- Reinforced Thumb Saddle
- Neoprene Knuckle Guard
- Terry Cloth Brow Wipe



**DPG216 L-XL**

**Leather Performance Hybrid**

- Split Cowhide Leather Palm with Durable Palm Overlay
- Breathable Spandex Back
- Reinforced Thumb Saddle



**DPG217 M-XL**

**SECUREFIT™ GENERAL UTILITY**

- Foam Padded Knuckle and Palm
- Rubberized Overlays
- SecureFit™ Wrist Closure



**DPG218 M-XL**

**RAPIDFIT™ GENERAL PURPOSE**

- Reinforced Finger & Thumb
- Foam Padded Knuckle & Palm
- Lightweight & Breathable
- Short Slip-On Cuff



**DPG222 L-XL**

**HIGH DEXTERITY MECHANIC**

- Hi-Dex Nubuck Foam Padded Palm
- Reinforced Fingers and Thumb
- Rapidfit™ Slip-On Cuff



**DPG870 M-XL**

**HI-VIZ REFLECTIVE UTILITY**

- Rubberized Grip Overlays
- High Visibility Green Back
- Silver Reflective Tape
- RapidFit™ Slip-On Cuff



## 6-PEG CORRUGATE FLOOR DISPLAYS

### MULTIPLE OPTIONS

**FS6-DPG201** (shown on right)  
DPG201, 36 pairs, sizes M-XL

**FS6-DPG211**  
DPG211, 30 pairs, sizes M-XL

**FS6-DPG201211**  
DPG201, 18 pairs and  
DPG211, 15 pairs, sizes M-XL

**FS6-DPG32**  
DPG32, 36 pairs, sizes M-XL

**FS6-DPG70L**  
DPG70L, 36 pairs, size L

**FS6-DPG73**  
DPG73T, 72 pairs, size L

**FS6-DPG737**  
DPG737, 24 pairs, sizes M-XL

**FS6-DPG781**  
DPG781, 36 pairs, sizes M-XL

**FS6-DPG855**  
DPG855T, 36 pairs, sizes M-XL

**FS6-DPG833T72T**  
DPG833T, 24 pairs, sizes M-XL  
DPG72T, 24 pairs, sizes M-XL



## 9-PEG CORRUGATE FLOOR DISPLAYS

### MULTIPLE OPTIONS

**FS9-DPG201**  
DPG201, 54 pairs, sizes M-XL

**FS9-DPG211** (shown on right)  
DPG211, 45 pairs, sizes M-XL

**FS9-DPG216**  
DPG216, 36 pairs, sizes L-XL

**FS9-DPG201211**  
DPG201, 24 pairs and DPG211,  
25 pairs, sizes M-XL

**FS9-DPG32**  
DPG32, 54 pairs, sizes M-XL

**FS9-DPG73**  
DPG73T, 108 pairs, size L

**FS9-DPG737**  
DPG737, 36 pairs, sizes M-XL

**FS9-DPG855**  
DPG855T, 72 pairs, sizes M-XL

**FS9-DPG72T**  
DPG72T, 12 pairs, size M  
DPG72T, 24 pairs, size L  
DPG72T, 18 pairs, size XL



## 12-PEG METAL FLOOR DISPLAYS

### MULTIPLE OPTIONS

#### PL-DPGMECHANICS

(shown on right)  
6 each:  
DPG20M, DPG20L, DPG20XL  
DPG200M, DPG200L, DPG200XL  
DPG218M, DPG218L, DPG218XL  
DPG781M, DPG781L, DPG781XL

#### PL-DPGCOMBO

6 each:  
DPG211M, DPG211L, DPG211XL  
DPG781M, DPG781L, DPG781XL  
12 each:  
DPG72TM, DPG72TL, DPG72TXL  
DPG855TM, DPG855TL, DPG855TXL



## COUNTERTOP SPINNER DISPLAY

**SRDPG32**  
(12) DPG32M  
(24) DPG32L  
(12) DPG32XL

## CORRUGATE DUMPBINS

### MULTIPLE OPTIONS

**DB-DPG32-12M36L24XL**  
DPG32, 72 pairs, sizes M-XL

**DB-DPG70L** (shown on left)  
DPG70L, 96 pairs, size L

**DB-DPG70**  
DPG70, 48 pairs, size L  
DPG70, 24 pairs each, size M & XL

**DB-DPG73TL**  
DPG73TL, 188 pairs, size L

**DB-DPG216**  
DPG216, 60 pairs, sizes L-XL

**DB-DPG222**  
DPG222, 72 pairs, sizes L-XL

**DB-DPG737-12M24L24XL**  
DPG737, 60 pairs, sizes M-XL

**DB-DPG740**  
DPG740, 48 pairs, sizes M-XL



## DSV220

Available in sizes M-4X

### ECONOMY MESH VEST

Part Number: DSV220-(size)

- Zipper Closure
- Single Mic Tab at Right Shoulder
- 2" Sewn on Reflective Tape
- Single Horizontal and Two Vertical Stripes
- Left Side Inner Chest Pocket
- Durable Stitch Reinforcement at Major Stress Points



## DSV221

Available in sizes M-5X

### CONTRASTING TRIM ECONOMY MESH VEST

Part Number: DSV221-(size)

- Zipper Closure
- Single Mic Tab at Right Shoulder
- 2" Sewn on Reflective Tape
- 3" Contrasting Black Trim Detail
- Single Horizontal and Two Vertical Stripes
- Left Side Inner Chest Pocket
- Durable Stitch Reinforcement at Major Stress Points



## DSV421

Available in sizes S/L, XL/3X, 4X/6X

### ADJUSTABLE BREAKAWAY MESH VEST

Part Number: DSV421-(size)

- Patented Zip-N-Rip™ Front Closure
- Drop Shoulder 5 Point Breakaway System
- Dual Mic Tabs At Shoulders
- 2" Premium Reflective Tape With 3" Contrasting Black Trim Detail
- Left Side Inner Chest Pocket
- Durable Stitch Reinforcement At Major Stress Points



## DSV521

Available in sizes M-5X

### HEAVY DUTY SURVEYOR VEST

Part Number: DSV521-(size)

- Zipper Closure
- Dual Mic Tabs at Shoulders
- 8 Pockets: 1 - 3D Radio Pocket with Clear ID Holder, 1 - Segmented Chest Pencil Pocket, 2 - Lower Front Pockets, 2 - Inside Open Tablet Sized Pockets, Full Back Plans Pocket, 1 - Inside Chest Flap Covered Pocket
- Rear D-Ring Pass Through
- Tether & Flagging Tape Grommets
- 1" Heavy Webbing Reinforcement
- Durable Stitch Reinforcement at Major Stress Points



## DRW11 S-4X

### PACKABLE LIGHTWEIGHT RIPSTOP RAINCOAT

- Segmented Lightweight Retroreflective Tape
- Zipper Front Closure with Hook & Loop Closure Storm Flap, One Bottom Snap, Adjustable Hem with Toggle
- Hook/Loop Wrist Adjustment Tabs
- Lined with Lightweight Mesh
- Folds Into Its Own Hood or Lower Front Pocket for Packable Portability
- Vented Underarm Zippers
- 2 Front Pockets



Compact Packable Design



Part Number: DRW11-1ZGR-(size)



## DSJ32 M-4X

### COLOR BLOCKED HEAVYWEIGHT FLEECE SWEATSHIRT

- 7.5" Long Vertical Cell Phone Pocket on Left Chest
- Detachable Hood with Snaps and Draw Cord with Toggle Adjustment
- 2" Wide Segmented Heat Transfer Tape
- Black Brushed Tricot Lined Body, Taffeta Lined Sleeves for Easy On/Off
- Adjustable Bungee Hem
- Black Colorblocking at Front Bottom of Jacket
- Pouch Pockets with Outer Zipper Pocket Layer
- Banded Cuffs



RETAIL FRIENDLY PACKAGING



Part Number: DSJ32-3ZGS-(size)



ANSI/ISEA Z87.1-2020



# PROTECTIVE EYEWEAR



## DPG110 CHISEL™

Wraparound One-Piece Lens

Soft Touch Rubber Brow



PART NUMBER LENS COLOR

DPG110-1C Clear

DPG110-2C Smoke

## DPG112 MITER™

Side And Temple Venting

Anti-Slip Overmolded Temples



PART NUMBER LENS COLOR

DPG112-1C Clear

DPG112-2C Smoke

## DPG82 CONCEALER™

Dual Injected Rubber Comfort Seal

Built-In Ventilation Channel



DPG82-11C



Clamshell

PART NUMBER LENS COLOR

DPG82-11C Clear Anti-Fog

DPG82-21C Smoke Anti-Fog



DPG82-21C



## DPG84 INSULATOR™

Premium Anti-Fog, Anti-Scratch Coating

Soft Rubber Gasket Seal



Bag



PART NUMBER LENS COLOR

DPG84-13D Clear Anti-Fog +



## DPG96 ROUTER™

Slim, Lightweight Frame  
Dual Mold Rubber Temples



Clamshell

PART NUMBER	LENS COLOR
DPG96-1C	Clear
DPG96-2C	Smoke
DPG96-6C	Silver Mirror

## DPG98 GABLE™

Lightweight, Full Frame  
Dual Mold Rubber Temples



Clamshell

PART NUMBER	LENS COLOR
DPG98-1C	Clear
DPG98-2C	Smoke
DPG98-YC	Yellow Mirror

## DPG99 HDP™ POLARIZED

Dual Mold Rubber Temples  
Soft Rubber Nosepiece  
Includes Neck Cord & Microfiber Carrying Bag



Clamshell

PART NUMBER	LENS / FRAME
DPG99-2PC	Smoke Polarized / Black

## DPG100 CROSSCUT®

Dual Injected Rubber Temples  
Soft, Rubber Nosepiece



Clamshell

PART NUMBER	FRAME	LENS COLOR
DPG100-1C	Black	Clear
DPG100-2C	Black	Smoke
DPG100-9C	Black	Indoor/Outdoor
DPG100T-1C	Translucent	Clear
DPG100T-2C	Translucent	Smoke

## DPG101 AUGER®

Lightweight Full Frame Design  
Soft Rubber Nosepiece & Temples



Clamshell

PART NUMBER	LENS COLOR
DPG101-1C	Clear
DPG101-2C	Smoke
DPG101-6C	Silver Mirror
DPG101-9C	Indoor/Outdoor

## DPG102 RECIP®

Ratcheting Temples with Rubber Tips  
Soft, Adjustable Rubber Nosepiece



Clamshell

PART NUMBER	LENS COLOR
DPG102-1C	Clear
DPG102-2C	Smoke
DPG102-9C	Indoor/Outdoor

## DPG106 SPECTOR™

Magnifier Molded Into Lens  
Vented Half Frame



Clamshell

PART NUMBER	LENS COLOR
DPG106-115C	Clear +1.5
DPG106-120C	Clear +2.0
DPG106-125C	Clear +2.5



## DPG107 SUPERVISOR®

Coated Frame Repels Dirt and Oil  
Comfortable Lightweight Design



Clamshell

PART NUMBER	LENS COLOR
DPG107-YC	Yellow Mirror

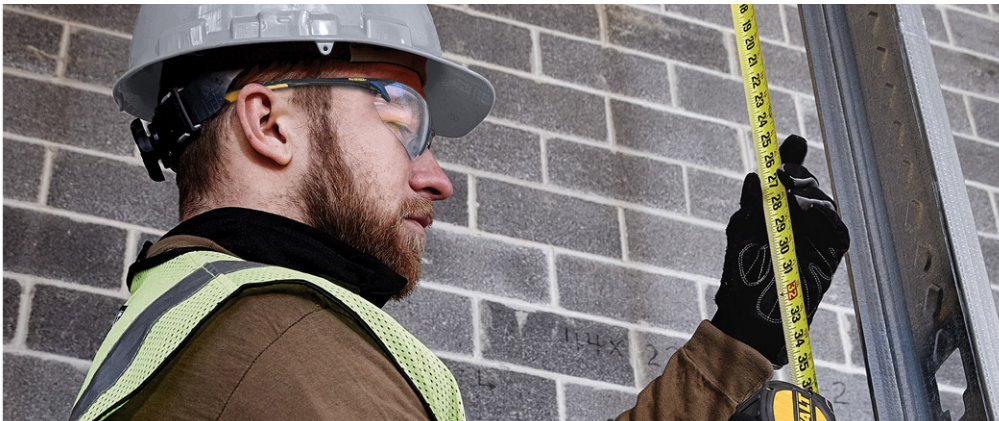
## DPG108 RENOVATOR®

Adjustable Vented Nosepiece  
Removable Rubber Brow Guard



Clamshell

PART NUMBER	LENS COLOR
DPG108-1C	Clear
DPG108-2C	Smoke



## DPG02-NTC CASE

NYLON THERMOFORM CASE  
Rigid Thermoform Shell  
Convenient Hanging Clip



PART NUMBER	DESCRIPTION
DPG02-NTC	Nylon Eyewear Case





ANSI/ISEA Z87.1-2020



# PROTECTIVE EYEWEAR



## DPG51 RADIUS™

10 Base Curve Lens

Rubber-Tipped Temples



Clamshell

PART NUMBER	LENS COLOR
DPG51-1C	Clear
DPG51-2C	Smoke
DPG51-6C	Silver Mirror
DPG51-9C	Indoor/Outdoor

## DPG52 CONTRACTOR PRO™

Rubber Tipped Temples

Soft, Rubber Nosepiece



Clamshell

PART NUMBER	LENS COLOR
DPG52-1C	Clear
DPG52-2C	Smoke
DPG52-6C	Silver Mirror
DPG52-9C	Indoor/Outdoor
DPG52-BC	Light Blue

Light blue lens reduces glare from artificial light such as halogen and fluorescent.



\*DPG52-1C and DPG52-2C only

## DPG54 PROTECTOR™

Ergonomic Lightweight Design

Rubber Tipped Temples



Clamshell

PART NUMBER	LENS COLOR
DPG54-1C	Clear
DPG54-2C	Smoke
DPG54-9C	Indoor/Outdoor

## DPG58 REINFORCER™

Cushioned, Rubber Temple Pads

Soft, Rubber Nosepiece



Clamshell

PART NUMBER	LENS COLOR
DPG58-1C	Clear
DPG58-2C	Smoke
DPG58-6C	Fire Mirror

## DPG59 REINFORCER™ RX

Magnification Diopter Molded Into Lens

Rubber Temple Pads



Clamshell

Includes soft cushioned sleeve

PART NUMBER	LENS COLOR
DPG59-110C	Clear 1.0
DPG59-115C	Clear 1.5
DPG59-120C	Clear 2.0
DPG59-125C	Clear 2.5
DPG59-130C	Clear 3.0

PART NUMBER	LENS COLOR
DPG59-215C	Smoke 1.5
DPG59-220C	Smoke 2.0
DPG59-225C	Smoke 2.5



## DPG94 DOMINATOR™

Full Frame With Larger Lens

Rubber Nosepiece & Temple Accents



Clamshell

PART NUMBER	LENS COLOR
DPG94-1C	Clear
DPG94-2C	Smoke
DPG94-6C	Silver Mirror
DPG94-YC	Yellow Mirror
DPG94-GLC	Brown Gradient

Gradient lens option for glare protection and visual clarity

# MERCHANDISING DISPLAYS

## 9523 12 PAIR DISPLAY

12 Pair spinning counter display  
Try-on mirror  
(Product not included)



## EWDISP36 36 PAIR DISPLAY

36 Pair spinning counter display  
2 try-on mirrors  
(Product not included)



## DSK 12 PAIR SIDEKICK

Corrugate sidekick with try-on mirror  
(Product included in loaded display options)



## 9522 36 PAIR DISPLAY

36 Pair spinning counter display  
2 try-on mirrors  
(Product not included)



## DPG17 BLUETOOTH® HEARING PROTECTOR

- Bluetooth® 5.0 connectivity compatible with most smart devices
- Integrated microphone for phone calls
- Listen to music/audio from connected smart device
- High fidelity speakers for premium sound
- Voice prompt notifications
- Rechargeable lithium ion battery (Micro-USB connector cable included)
- Auto shutdown after 5 minutes



Bluetooth® 5.0 Wireless Technology



PART NUMBER	DESCRIPTION
DPG17	NRR 25 BLUETOOTH



## DPG15 DIGITAL AM/FM HEARING PROTECTOR

- Digital AM/FM radio tuning with LCD display
- 8 radio station presets per band
- Cushioned, adjustable headband
- Use with any audio playing device (3.5mm Stereo Auxiliary Input Jack included)



2 (TWO) 1.5v AA batteries required (not included)



PART NUMBER	DESCRIPTION
DPG15	NRR 25 AM/FM



## DPG62 INTERCEPTOR™

### COMPACT FOLDING EARMUFF

- Lightweight, folding design
- Comfortable moisture wicking headband
- Adjustable, padded earcups

Compact Folding Feature  
For easy storage



PART NUMBER	DESCRIPTION
DPG62-C	NRR29 Earmuff



## DPG64 INTERRUPTER™

### LIGHTWEIGHT EARMUFF

- Soft, foam filled, padded earcups
- Lightweight, durable construction
- Adjustable, padded headband



PART NUMBER	DESCRIPTION
DPG64HC	NRR23 Earmuff



## DPG63/DPG65 FOAM EARPLUGS

### DISPOSABLE

- Comfortable Seal, Lightweight Foam
- Comfortable, Versatile Bell Shape
- PVC Dielectric Cord (corded version)



PART NUMBER	DESCRIPTION
DPG63BG50	Uncorded (Resealable bag of 50 pair)
DPG63TC5	Uncorded (Blister pack of 5 pair with carry case)
DPG65TC2	Corded (Blister pack of 2 pair with carry case)



## DPG66-D CAP MOUNT

### LIGHTWEIGHT EARMUFF

- Universal Design
- Adjustable, Padded Earcups
- Fits Most Slotted Hard Hats



Cap Mount Interceptor and Hard Hat.  
\*Hard hat sold separately

PART NUMBER	DESCRIPTION
DPG66-D	NRR26 Earmuff



## TYPE II SAFETY HELMETS

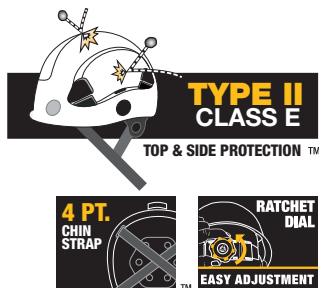
### DPG22

- Durable Polycarbonate/ABS Shell
- Vented And Non-Vented
- Adjustable 4-Point Leather Chin Strap
- EPS Foam Liner
- Smooth glide, articulating ratchet adjustment dial
- Antimicrobial Crown Padding
- **Non-Vented:** Meets ANSI/ISEA Z89.1-2014 (R2019), Type II, Class E
- **Vented:** Meets ANSI/ISEA Z89.1-2014 (R2019), Type II, Class C



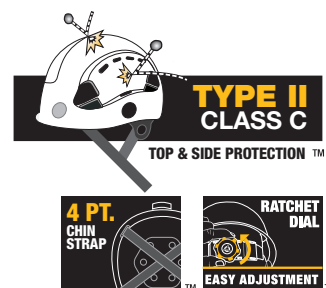
NON-VENTED

Item	Color
DPG22-WHITE	WHITE
DPG22-YELLOW	YELLOW
DPG22-SLATE	SLATE GRAY



VENTED

Item	Color
DPG22V-WHITE	WHITE
DPG22V-YELLOW	YELLOW
DPG22V-SLATE	SLATE GRAY



## TYPE II SAFETY HELMET ACCESSORIES

### SHAPED VISOR FOR TYPE II HELMET

- Premium coating on AF+ lenses meets "X" anti-fog performance requirements
- Made for use with DPG22 helmets
- Meets ANSI/ISEA Z87.1-2020
- Can be worn with most eyewear



Item	Lens
DPG22-SH13	CLEAR AF+
DPG22-SH23	SMOKE AF+
DPG22-SH90	INDOOR/OUTDOOR



Visor shown attached to DPG22 Safety Helmet. Helmet sold separately.

### DIELECTRIC CAP MOUNT EARMUFF

- Designed for DEWALT Type II helmets (also fits most slotted hard hats)
- Reinforced pivot point
- Padded earcups
- Low profile
- Lightweight



Item	Description
DPG660-D	NRR 25 Earmuff

Capmount Earmuff and Visor shown attached to DPG22 Safety Helmet. Helmet sold separately.



## HARD HATS

### PROTECTIVE HEADGEAR

- Ratchet Nylon Suspension
- Lightweight High Density Polyethylene
- Moisture Wicking Browband
- Universal Accessory Slots
- Meets ANSI / ISEA Z89.1-2014 (R2019), Type I, Class G & E



### CAP STYLE

Item	Color
DPG11-W	WHITE
DPG11-Y	YELLOW



Ratchet adjuster allows wearer to easily modify fit while wearing the hard hat.



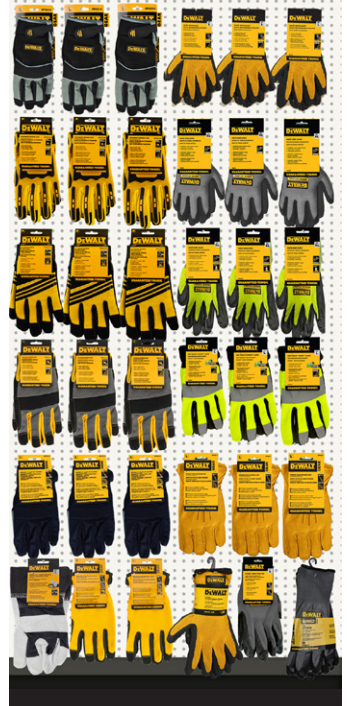
### FULL BRIM

Item	Color
DPG11FB-W	WHITE

**DEWALT**



**DEWALT**



**DEWALT**



EYEWEAR: ANSI/ISEA Z87.1-2020

## SYE10



### Lightweight Wraparound Safety Eyewear

Rubber secure fit temples  
Lightweight frame  
Full coverage wraparound design



SKU	Description
SYE10-10BP	Clear Lens

## SYE11



### Adjustable One Piece Safety Eyewear

One piece lightweight design  
Integrated side shields  
Adjustable temples  
Extended brow guard



SKU	Description
SYE11-10D	Clear Lens

## SYE12



### Over The Glass (OTG) Safety Eyewear

Side ventilation for fog control  
Molded brow guard  
Fits over most prescription glasses



SKU	Description
SYE12-10D	Clear Lens

## SYE15



### Rubber Gasket Safety Eyewear

Removable TPU rubber lining  
Bi-molded rubber temples  
Anti-fog coating  
Adjustable, detachable head strap included



Clamshell		Polybag	
SKU	Description	SKU	Description
SYE15-11CS	Clear Anti-Fog	SYE15-11D	Clear Anti-Fog
SYE15-21CS	Smoke Anti-Fog	SYE15-21D	Smoke Anti-Fog

## SYE17



### Wraparound Safety Eyewear

Wraparound one-piece lens  
Bi-molded rubber temples  
Adjustable nosepieces



SKU	Description
SYE17-10D	Clear
SYE17-11D	Clear Anti-Fog
SYE17-20D	Smoke

## SYE21



### Chemical Splash Safety Goggles

Adjustable neoprene strap  
Fits over most prescription eyewear  
Indirect vents



SKU	Description
SYE21-10D	Clear Lens

## SYH34



### Uncorded Disposable Foam Earplugs

Comfortable wing shape  
Universal comfortable fit  
Extremely soft foam  
Low-pressure fit  
Made in USA



SKU	Description
SYH34-5BP	5 Pair Uncorded
SYH34-80TB	80 Pair Uncorded

## SYH70



### Uncorded Disposable Foam Earplugs

Comfortable, tapered shape  
Smooth glossy surface repels dirt  
Low-pressure fit  
Self adjusting foam  
Made in USA



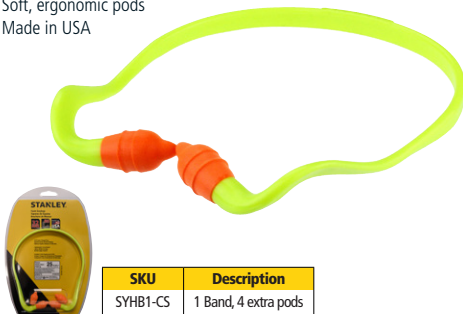
SKU	Description
SYH70-3BP	3 Pair Uncorded

## SYHB1



### Banded Hearing Protector

High density, durable construction  
Lightweight, curved band  
Soft, ergonomic pods  
Made in USA



SKU	Description
SYHB1-CS	1 Band, 4 extra pods

## SYH43



### Corded Reusable Flanged Earplugs

Four flanged comfort seal  
Reusable silicone rubber  
PVC dielectric cord  
Latex free



SKU	Description
SYH43-1BP	1 Pair Corded

## PARTICULATE RESPIRATOR WITH VALVE

- Exhalation Valve
- Soft Facial Liner
- Adjustable Nose Clip
- Comfort Straps



N95 RATED	SYN95V	SYN95V1PKC
	UPC	674326335872

## PARTICULATE RESPIRATOR

- Soft Facial Liner
- Adjustable Nose Clip
- Comfort Straps



N95 RATED	SYN95	SYN952PKC	SYN9520BX
DESC	2 N95 masks	20 N95 masks	

## NUISANCE MASKS

- Adjustable Nose Clip
- Comfort Straps



SYNM	SYNM5PKB	SYNM50BX
DESC	5 Dust Masks	50 Dust Masks



**CROSSFIRE**<sup>®</sup>  
by RADIANS

**TAKES AN IMPACT. MAKES AN IMPACT.**<sup>™</sup>

CROSSFIRE<sup>®</sup> Premium Safety Eyewear by Radians takes an impact with ANSI/ISEA Z87.1-2020 certified frames and lenses.

CROSSFIRE safety eyewear makes an impact on or off the jobsite with bold styles that protect your eyes from debris and UV rays, without sacrificing the appeal of sunglasses.

CROSSFIRE Polarized Lens Technology knocks out glare by filtering the reflected bent light resulting in enhanced, undistracted vision in potentially dangerous environments

CROSSFIRE High Definition Lens Technology provides enhanced vision and exceptional optical clarity by filtering out the most damaging blue rays.

**PROTECT YOUR EYES**

## cipher



- Rubber nosepiece
- Dual mold rubber temples



Frame: Matte Black  
Lens: Blue Mirror



Clam

Model #	Frame Color	Lens
XFCP-10GMC	Camo	Gold Mirror
XFCP-TOLYC	Tan SDE	HD Yellow
XFCP-2020C	Aluminum Grey	Smoke
XFCP-6040C	Aluminum Grey	Amber

## talos



- Adjustable rubber nosepiece
- Dual mold rubber temples



Frame: Woodland Camo  
Lens: HD Brown



Clam

Model #	Frame Color	Lens
XFTL-1060C	Shiny Black	Silver Mirror
XFTL-W070C	White	Blue Mirror
XFTL-1020C	Crystal Black	Super Dark Smoke
XFTL-6010C	Shiny Pearl Gray	Clear

## solitude



- Adjustable rubber nosepiece
- Dual mold rubber temples
- Lightweight



Frame: Shiny Black  
Lens: Silver Mirror



Clam

Model #	Frame Color	Lens
XFSL-106PC	Crystal Black	Silver Mirror Polarized
XFSL-1020C	Crystal Brown	HD Brown Mirror
XFSL-6010C	Shiny Black	Silver Mirror
XFSL-10R0C	Crystal Black	Smoke
XFSL-1060C	Shiny Pearl Gray	Clear



## infinity

- Vented rubber nosepiece
- Dual mold rubber temples



2812

Bag

Model #	Frame Color	Lens
224	Shiny Pearl Gray	Clear
241	Crystal Black	Smoke
263	Shiny Black	Silver Mirror
2117	Crystal Brown	HD Brown Mirror
2243	Pearl White	Silver Mirror

Bag

Model #	Frame Color	Lens
2812	Black/Burnt Orange	Gold Mirror
2254	Pearl Pink	Clear
21126	Crystal Brown	HD Brown Polarized
22528	Pearl Pink	Dark Smoke



## sniper

- Vented rubber nosepiece
- Dual mold rubber temples



9141

Bag

Model #	Frame Color	Lens
9614	Shiny Black	Smoke Polarized
9141	Woodland Brown Camo	Smoke
91721	Military Green Camo	HD Green
921	Matte Black	Smoke
9117	Crystal Brown	HD Brown Mirror
9215	Shiny Pearl Gray	Indoor/Outdoor

Bag

Model #	Frame Color	Lens
924	Matte Black	Clear
925	Matte Black	Yellow
9233	Shiny Black/Burgundy Red	Silver Mirror
9610	Shiny Black	Emerald Mirror
91116	Crystal Brown	HD Copper



## cirrus

- Adjustable rubber nosepiece
- Sleek, One-Piece Lens Design



39812

Bag

Model #	Frame Color	Lens
3968	Shiny Black	Red Mirror
39221	Matte Black	Smoke
39812	Burnt Orange	Gold Mirror
392215	Matte Black	I/O



## diamond back

- EVA foam-lined frame
- Soft rubber nosepiece



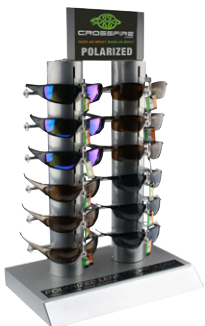
27103

Bag

Model #	Frame Color	Lens
27103	Shiny Red	Silver Mirror
2724 AF	Matte Black	Clear Anti-Fog
2761 AF	Shiny Black	Smoke Anti-Fog
27615 AF	Shiny Black	I/O Anti-Fog



# PREMIUM MERCHANDISING SOLUTIONS



#PL12 12-UNIT POLARIZED LOCKING COUNTER DISPLAY 1 TRY-ON MIRROR



#XFSK-99 12-UNIT CORRUGATE SIDEKICK DISPLAY



#36BABA 36-UNIT SPINNING COUNTER DISPLAY 2 TRY-ON MIRRORS



#60BABA 60-UNIT FLOOR DISPLAY

## RAD-APOCALYPSE™

- Rubber-tipped bayonet temples
- Rubber nosepiece



Neck Cord Included

12 PAIR GRAVITY FEED DISPLAY

AP1-10-GF12 12 Pair Clear Lens

AP1-20-GF12 12 Pair Smoke Lens

## THRAXUS

- Patented powerful edge design
- Enhanced field of view
- Patented cyclonic venting
- Comfort fit floating nose loop
- Patented self-adjusting nose pads
- Pressure distribution paddle-shaped TPR nose pad



TXC1-10CS Clear Lens

TXC1-40CS Amber Lens

TXM4-11CS Digital Camo Clear AF Lens

TXM4-41CS Digital Camo Amber AF Lens



## THRAXUS ELITE™

- Patented edge design
- Wire-Core temples
- Patented cyclonic venting
- 3-position ratchet temples
- Ultralight frame for all-day wear
- Soft brow frame for added comfort
- Adjustable nose pads for secure fit



TXE1-10CS Gray Features Clear Lens

TXE8-10CS Hi-Vis Features Clear Lens

## OBLITERATOR™ IQ



- IQuity Intelligent Anti-Fog Technology
- Comes with Removable Foam-Lining and Adjustable Headstrap
- Rubber Nosepiece for Added Comfort



### BOX

OBL1-13 Black Frame Clear IQ Anti-Fog

OBL1-23 Black Frame Smoke IQ Anti-Fog



## REVELATION™

- Ratcheting and telescoping temples
- Rubber nosepiece
- Vented frame



RV0120ID

### GLAMSHELL

RV0110CS Clear Lens

RV0111CS Clear Anti-Fog Lens

RV0120CS Smoke Lens

RV0140CS Amber Lens

RV0180CS Vermillion Lens

RV0190CS Indoor/Outdoor Lens

RV01P0CS Smoke Polarized Lens



## CHEATERS® BI-FOCALS

- Ratcheting temples
- Rubber nosepiece and temple grips
- Protective sleeve



CH1-115

### BAG

CH1-115 Clear Lens +1.5

CH1-120 Clear Lens +2.0

CH1-125 Clear Lens +2.5

CH1-215 Smoke Lens +1.5

CH1-220 Smoke Lens +2.0

CH1-225 Smoke Lens +2.5





## EXPLORER™

- Lightweight
- Wraparound 9.75 base lens



### BAG/CLAMSHELL

EX0110HC	Clear Lens
EX0120HC	Smoke Lens
EX0140HC	Amber Lens
EX0190HC	Indoor/Outdoor Lens
EX3110CS	3-Pack Clear Anti-Fog Lens
EX3124CS	3-Pack: Tea Clear, Smoke, Amber Lens



## OBLIVION™

- Frameless, one-piece lens design
- Vented rubber nosepiece



### CLAMSHELL

OBV0110CS	Clear Lens
OBV0140CS	Amber Lens



## COVERALL™

- Integrated Molded Brow Guard and Reinforced Side Shields
- One Piece Lens Design Fits Over Most Prescription Glasses



### Clear

BAG	
CV0010	Clear Lens
CV0020	Smoke Lens
CV0040	Amber Lens



## OVERLOOK™

- Lightweight, one-piece lens design
- Flexible temples with dual-mold rubber temple pads
- Integrated nosepiece



### CLAM

OV1-20CS	Black Frame/Smoke Lens
OV6-10CS	Gray Frame/Clear Lens



## CHEMICAL™ GOGGLE

- Chemical Splash Indirect Vents with Neoprene Strap
- Fits Over Most Prescription Glasses



### GG011UID

BAG	
GG011UID	Clear Lens
GG0111ID	Clear Anti-Fog Lens



# MADE IN USA LENS CLEANING

## LENS CLEANING TOWELETTES

### LC25BG

#### 25 COUNT LENS CLEANING TOWELETTE BAG

- Cleans Polycarbonate & Glass Lenses
- Helps Prevent Fogging
- Low Lint, Non Abrasive Towelette
- Reduces Static



### LCD100

#### 100 COUNT LENS CLEANING TOWELETTE BOX

- Cleans Polycarbonate and Glass Lenses
- Helps Prevent Fogging
- Reduces Static
- Low Lint, Non Abrasive Towelette

## LENS CLEANING STATIONS



#### REGULAR LENS CLEANING STATION

- 8oz. Cleaner
- 600 Low Lint Tissues
- Helps Prevent Fogging
- Reduces Static



#### LARGE LENS CLEANING STATION

- 16oz. Cleaner
- 1200 Low Lint Tissues
- Prevents Fogging
- Reduces Static



## GRANITE™ VENTED CAP STYLE HARD HAT

- Venting To Promote Cooling Circulation
- Pillowed Brow Pad
- Nylon Crown Strap Suspensions
- Four Point Ratchet Suspension
- Vertical Height Adjustment
- High Density Polyethylene Construction
- Universal Accessory Slots



RATCHET SUSPENSION



COOLING VENTS



GHR4V-WHITE  
GHR4V-YELLOW



GHR4V-DARK GRAY  
GHR4V-RED

## QUARTZ™ VENTED FULL BRIM HARD HAT

- Venting To Promote Cooling Circulation
- Pillowed Brow Pad
- Nylon Crown Strap Suspensions
- Four Point Ratchet Suspension
- Vertical Height Adjustment
- High Density Polyethylene Construction
- Full Profile, Full Brim



RATCHET SUSPENSION



COOLING VENTS

QHR4V-RED  
QHR4V-WHITE  
QHR4V-YELLOW

## GRANITE™ CAP STYLE HARD HAT

- Pillowed Brow Pad
- Nylon Crown Strap Suspensions
- Vertical Height Adjustment
- High Density Polyethylene Construction
- Universal Accessory Slots
- Colors Available: P6: White  
P4: Yellow, White  
R4 / R6: White, Yellow, Blue, Gray, Green, Hi-Viz Green, Orange, Hi-Viz Orange, Red, Ocean Blue (R4 only), Dark Gray (R6 only)



- GHP4-\* 4 Point Pinlock
- GHR4-\* 4 Point Ratchet
- GHP6-\* 6 Point Pinlock
- GHR6-\* 6 Point Ratchet

### REPLACEMENT SUSPENSIONS

- HHSR4 4 Point Ratchet
- HHSR6 6 Point Ratchet



## QUARTZ™ FULL BRIM HARD HAT

- Pillowed Brow Pad
- Nylon Crown Strap Suspensions
- Vertical Height Adjustment
- High Density Polyethylene Construction
- Full Profile, Full Brim
- Colors Available: P4: White  
R4 and R6: White, Yellow, Blue, Gray, Green, Hi-Viz Green, Orange, Hi-Viz Orange, Red, Dark Gray (R4 only)



- QHP4-\* 4 Point Pinlock
- QHR4-\* 4 Point Ratchet
- QHR6-\* 6 Point Ratchet

### REPLACEMENT SUSPENSIONS

- HHSR4 4 Point Ratchet
- HHSR6 6 Point Ratchet





## LOWSET™

- Soft, foam padded low profile earcups
- Adjustable moisture wicking headband
- Compact folding feature for easy storage



LS0830CS



LS0800CS



LS0820CS



LS0100CS Black



LS0820CS Aqua/Charcoal

LS0830CS Coral/Charcoal

LS0800CS Pink



## LOWSET™ BTH

- Headwear compatible
- Lightweight, comfortable fit
- Soft, foam padded low profile earcups



LS0101CS Behind the Head



## TRPX™

- Premium passive earmuff
- Adjustable moisture wicking headband
- Compact folding feature



TR0160CS Black/Gray



## DIELECTRIC CAP-MOUNT EARMUFF

- Dielectric cap-mount design
- Foldable arms with 4-point suspension
- Padded earcups and adjustable fit



Capmount Earmuff shown attached to safety helmet. Helmet sold separately.

DCM25-BX NRR25 Cap-Mount



## HUSHIES™ INFANT/TODDLER EARMUFF

- Sized for newborns up to 3 years old
- Lightweight design
- Comfortable, adjustable headband



HSH0220CS Hushies™ Passive Infant/Toddler Earmuff Blue

HSH0269CS Hushies™ Passive Infant/Toddler Earmuff Purple

## Resistor™ II

- Four flanged comfort seal
- Reusable soft thermoplastic rubber (TPR)
- PVC dielectric neck cord
- Soap & water washable
- Latex free



FP43



FP43HV



FP43BP2 Corded - 2 pair with Case

FP43HVBP3 Corded - 3 pair with 2 Cases



## Resistor™

Disposable Foam Earplugs

- Comfortable, tapered shape
- Smooth shiny surface repels dirt
- Low pressure, self adjusting foam offers long wearing comfort and quick recovery time
- Made in the USA
- NRR 32 dB



FP70BG50

## DETOUR DETERRENT™

Disposable Foam Earplugs

- Comfortable Wing Shape
- Dual Color - Yellow and Green
- Offers a comfortable fit for virtually any ear canal
- Extremely Soft Foam Plug
- Provides a comfortable, low-pressure fit
- Made in USA
- NRR 32 dB



FP70BG50	Uncorded	50pr Bag
FP8000BP	6 Pair Uncorded	6pr Blister Pack
FP8100BP	3 Pair Corded	3pr Blister Pack
FP8000RD/100	100 Pair Uncorded	100pr Jar

FP70ABP6	Uncorded Aqua	6pr Blister Pack
FP70ABG50	Uncorded Aqua	50pr Bag
FP70RD/25	25 Pair Uncorded	25pr Jar
FP70P/25	25 Pair Pink Uncorded	25pr jar



FP70P/25

FP70RD/25

FP34BG50	Uncorded	50pr Bag
----------	----------	----------

## PROHIBITOR™

Small Disposable Foam Earplugs

- Comfortable, tapered shape
- Smooth shiny surface repels dirt
- Low pressure, self adjusting foam offers long wearing comfort and quick recovery time
- 12% smaller than standard plugs
- Made in the USA
- NRR 31 db



FP74B

FP75B



FP74BBP3	Blue Corded	3pr blister
----------	-------------	-------------

FP74B/25	Blue Uncorded	25pr jar
FP74BBP6	Blue Uncorded	6pr blister

## jelli® SNUG PLUGS

- Washable and reusable.
- Non-toxic materials
- Made in the USA
- Flip-top case included
- Available with or without nylon cord
- NRR 28 dB



JP3150HC	Corded Plugs Polybag
----------	----------------------

## CTD-FPASSORT1

- Includes a mixture of disposable, reusable, and custom hearing protection options
- Customer can select from a wide NRR range (25-32 dB)
- Proudly made in the USA, ensuring quality and reliability



CTD-FPASSORT1

INCLUDED	DESCRIPTION	QTY
FP70RD/25	Resistor® 32 - Orange Disposable Foam Earplugs - Bottle of 25 Uncorded	12
FP70A/25	Resistor® 32 - Aqua Disposable Foam Earplugs - Bottle of 25 Uncorded	6
FP74B/25	Prohibitor® 31 - Blue Small Disposable Foam Earplugs - Bottle of 25 Uncorded	6
FP8000BP	Resistor® 32 - Orange Disposable Foam Earplugs - 6 Pair Uncorded	6
FP70ABP6	Resistor® 32 - Aqua Disposable Foam Earplugs - 6 Pair Uncorded	6
JP3150HC	Snug Plug 28 - Jelli® Earplugs - Corded with Case	6
CEP002-T	Custom Molded Earplugs - Tan - NRR 26	6

## RAD-BAND 2

BANDED HEARING PROTECTION

- Soft, ergonomic pods
- Lightweight, curved band
- Includes 1 pair replacement pods



## RAD-BAND™

- Lightweight Dielectric Design
- Super Soft Jelli® Plugs
- Washable and Reusable
- Earplug Angle is Engineered To Align with Ear Canal for Maximum Sound Attenuation And Comfort
- NRR 23



Clamshell (includes 4 extra pods)

RB210CS Orange Band / Orange Pods

FP-PODBAG Replacement Pods / 1 pr



RB1150 Banded Hearing Protector

## CUSTOM MOLDED EARPLUGS

- Molds in 10 minutes
- Soft, Permanent, Custom Fit
- All Day Comfort
- Easy to Follow Instructions
- Safe, Non-toxic
- Hypo-allergenic
- Environmentally Friendly
- Long Lasting and Washable

### RETAIL BOX



CEP002-T	Tan Box
CEP002-B	Blue Box
CEP002-P	Pink Box



CEPNC-B	Black Lanyard w/screws
CEPNC-R	Red Lanyard w/screws
CEPCASE	Plastic Storage Case





## ANSI/ISEA 107-2020 TYPE R/CLASS 2 STANDARDS



Type R HVSA provides high visibility protection for workers who require greater visibility under inclement weather conditions, when backgrounds are complex and when tasks divert attention from traffic.



Background Fabric:  
775 Square Inches (540 Sq In - Small Sizes)  
Reflective Material:  
201 Square Inches Minimum  
Reflective Width: 1.37 Inches

### RETAIL FRIENDLY PACKAGING



### SV2Z S-5X

#### ECONOMY VEST with ZIPPER

- Zipper closure
- Pockets: 1 upper left front, 1 lower right inside
- 100% polyester solid knit



SV2ZGM-(size) Green Mesh

SV2ZOM-(size) Orange Mesh

SV2ZGS-(size) Green Solid

SV2ZOS-(size) Orange Solid

### SV2 S-5X

#### ECONOMY VEST

- 100% Polyester mesh
- Hook and loop closure
- Pockets: 1 upper chest and 1 lower inside



SV2GM-(size) Green Mesh

SV2OM-(size) Orange Mesh

### SV6 S-5X

#### SURVEYOR TWO-TONE TRIM SOLID FRONT - MESH BACK

- Two-tone tape
- Large cell/radio pocket with clear ID badge holder
- Bonus flashlight pocket



SV6G(size) Green Mesh/Solid

SV6O(size) Orange Mesh/Solid

### ST11-2 S-5X

#### MAX-DRI™ MOISTURE WICKING T-SHIRT

- 100% Max-Dri™ wicking polyester mesh
- Heat transfer reflective tape
- Left chest pocket



ST11-2PGS-(size) Green Mesh

ST11-2POS-(size) Orange Mesh



# TYPE R/CLASS 2



## SV22-2 S-5X

### ECONOMY TWO-TONE VEST

- Contrasting trim detail
- Zipper closure



SV22-2ZGM-(size) Green Mesh  
SV22-2ZOM-(size) Orange Mesh

## SV24-2 M/L-3X/5X

### EXPANDABLE 5-POINT BREAKAWAY

- Zip-N-Rip™ closure
- Drop shoulder 5 point breakaway
- Contrast trim
- Expandable waist and adjustable sides



SV24-2ZGM-(size) Green Mesh  
SV24-2ZOM-(size) Orange Mesh

## SV59Z-2 S-5X

### HEAVY DUTY SURVEYOR with ZIPPER

- Rear plan pocket
- Grommets for tool or accessory tethers
- Large format pockets for tablets/lightweight tools
- Webbing for reinforced edges



SV59Z-2ZGD-(size) Green Mesh/Solid    SV59Z-2ZOD-(size) Orange Mesh/Solid

## SV59W-2 S-3X

### WOMEN'S HEAVY DUTY SURVEYOR w/ZIPPER

- Heavy duty vest reinforced with webbing
- Grommets for tool attachments
- Adjustable cinch hidden in back waist
- Silver reflective tape
- Rear pass through zipper plan pocket



SV59W-2ZGM-(size) Green Mesh/Solid    SV59W-2ZOD-(size) Orange Mesh/Solid

# CUSTOM IMPRINTING

## QUICK. CUSTOM. IN HOUSE.

Branding PPE with your logo, company name, or safety message not only elevates and differentiates your brand, but it offers these value-added benefits too:

- YOUR PPE protects people and advertises your business and brands
- YOUR COMPANY exudes professionalism and a greater sense of corporate identity
- YOUR EMPLOYEES are easily recognizable and feel part of a team



# TYPE R/CLASS 3

## ANSI/ISEA 107-2020 TYPE R/CLASS 3 STANDARDS



Type R HVSA provides high visibility protection for workers who require greater visibility under inclement weather conditions, when backgrounds are complex and when tasks divert attention from traffic.

ANSI/ISEA 107-2015 Type R Class 3 Standards:  
Background Fabric: 1240 Square Inches (1000 Sq In - Small Sizes)  
Reflective Material: 310 Square Inches Minimum  
Reflective Width: 2 Inches



### **SJ322B** S-4X

#### SOFTSHELL RIPSTOP JACKET

- Tri-laminate ripstop polyester with fleece lining
- Pockets: 1 exterior zipper chest, 2 lower hand warmer, 1 sleeve pen, 1 interior zipper chest, 3 lower large interior
- Color blocked design



SJ322B-3ZGS-(size) Green

### **SJ01B-3** M-5X

#### HOODED SWEATSHIRT WITH ZIPPER

- Polyester low pilling fleece
- Black color blocking
- Zipper front closure
- Silver reflective tape
- Mesh lined hood with adjustable pull cord



SJ01B-3ZOS-(size) Orange SJ01B-3ZGS-(size) Green

### **SJ11QB** S-5X

#### QUILTED BOMBER JACKET

- PU coated polyester weatherproof shell
- Concealable attached hood
- 3D radio pocket, lower front hand pockets, sleeve pencil pocket, internal chest pocket
- Black color blocking
- Quilted liner



SJ11QB-3ZOS-(size) Orange SJ11QB-3ZGS-(size) Green

### **SJ210B** M-5X GREEN M-4X ORANGE

#### 3-IN-1 DELUXE BOMBER

- PU coated polyester weatherproof shell
- Zip out fleece liner with lined sleeves
- Concealable attached hood
- Black color blocking
- Pockets: 3D radio, lower front hand, sleeve pencil, internal chest



SJ210B-3ZGS-(size) Green

SJ210B-3ZOS-(size) Orange



### **SJ411QB** M-5X

#### QUILTED PARKA

- PU coated polyester weatherproof shell
- Quilted liner
- Concealable attached hood
- 3D radio pocket, lower front hand pockets, sleeve pencil pocket, internal chest pocket
- Storm flap



SJ411QB-3ZGS-(size) Green

SJ411QB-3ZOS-(size) Orange



# TYPE O CLASS 1/NON-RATED

## SV

### NON-RATED VESTS

- Non-rated high visibility mesh vest
- Front hook and loop closure
- Durable elastic side straps
- Available in Green, Orange
- Universal fit



### ONE-INCH TAPE

SVG1-S/XL Green / S/XL

SVG1 Green / 2X/5X

SV01-S/XL Orange / S/XL

SV01 Orange / 2X/5X

### NO TAPE

SVG Green / Universal

SVO Orange / Universal

## ST11-N

M - 5X

### MAX-DRI™ MOISTURE WICKING SHORT SLEEVE NON-RATED T-SHIRT

- 100% Max-Dri™ wicking polyester mesh
- Left chest pocket



ST11-NPOS-(size) Orange ST11-NPGS-(size) Green

## ST21-N

M - 5X

### MAX-DRI™ MOISTURE WICKING LONG SLEEVE NON-RATED T-SHIRT

- 100% Max-Dri™ wicking polyester mesh
- Left chest pocket



ST21-NPOS-(size) Orange ST21-NPGS-(size) Green

## ST61-N

S - 5X

### MAX-DRI™ MOISTURE WICKING HOODED LONG SLEEVE NON-RATED T-SHIRT

- 100% Max-Dri™ wicking polyester mesh
- Left chest pocket



ST61-NPOS-(size) Orange ST61-NPGS-(size) Green

## RWG100

M - XXL

- Padded double layer synthetic palm
- Reflective fingertips, pull strap and knuckle
- Slip on



## RWG800

S - XXL

- Hi-vis wind and water resistant shell
- REFLECTIVZ® waterproof plated palm
- Reflective knuckle strap







# RAINWEAR



## RW32-3Z1Y M - 5X

### HEAVY DUTY RIPSTOP WATERPROOF RAIN JACKET

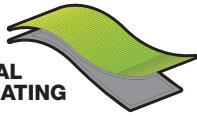
- 2" silver reflective tape
- Attached stowable hood
- Sleeve cuff with hook & loop adjustment
- 3 zip closure pockets
- 1 interior fleece lined pocket
- D-ring pass thru
- Black bottom
- 2 mic tabs



ANSI/ISEA 107-2015



Attached Stowable Hood



RIPSTOP MATERIAL WATERPROOF COATING

RW32-3Z1Y-(size) Green

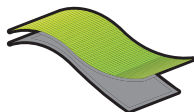
## RW32-EZ1Y M - 5X

### HEAVY DUTY RIPSTOP WATERPROOF BIB RAIN PANTS

- Black bottom legs and seat
- Internal pocket for knee pad (sold separately)
- Hook & loop closure over zipper fly
- Adjustable elastic straps
- Heavy-duty quick release buckles
- Removable suspenders
- Boot zippers with leg opening snaps
- Side cargo pocket



ANSI/ISEA 107-2015



RIPSTOP MATERIAL WATERPROOF COATING

RW32-EZ1Y-(size) Green/Black Bottom

### RW32-KP KNEE PAD

- Flexible foam knee pad
- Sold separately by pair

• 10" X 6"



RW32-KP Knee Pad (sold by pair)





## RW10-3S1Y M - 5X

### LIGHTWEIGHT WATERPROOF RAIN JACKET

- Sleeve has internal elastic cuffs
- Vented cape back
- Detachable hood rolls into collar
- Zipper front with snap closure
- Storm flap



ANSI/ISEA 107-2015

RW10-3S1Y-(size) Jacket

## RW10-ES1Y M - 5X

### LIGHTWEIGHT WATERPROOF RAIN PANTS

- Slash pockets
- Elastic waist
- Double stitched seams
- Adjustable cuffs



RW10-ES1Y-(size) Pants

## RW30-3Z1Y S - 5X

### GENERAL PURPOSE WATERPROOF RAIN JACKET

- Black bottom
- 2" silver reflective tape
- Vented back cape with D-ring pass thru
- Sleeve cuff with hook & loop adjustment
- Detachable hood (included)



Detachable Hood (included)



ANSI/ISEA 107-2015

RW30-3Z1Y-(size) Jacket

## RW30-ES1Y S - 5X

### GENERAL PURPOSE WATERPROOF RAIN BIBS

- Two-toned with color blocked legs
- One horizontal reflective stripe on waist
- Slash pockets
- Upper chest pocket with zipper, four pen pocket slots, one large pocket
- Adjustable suspender straps
- Front hook & loop fly closure
- Side waist zipper expansion
- Adjustable snaps on lower leg



ANSI/ISEA 107-2015

RW30-ES1Y-(size) Bib

## RS15-NSYV M - 5X

### DRI-RAD®

AFFORDABLE DURABILITY  
.28MM PVC/POLY/PVC JACKET,  
COAT, BIBS (3PC. SUIT)

- Suit includes jacket, hood, and bib
- ETP™ collar
- Front pockets with flaps
- Snap front closure
- Splash-proof storm flap
- Detachable hood
- Adjustable elastic bib suspenders



RS15-NSYV-(size) Suit



## UNIVERSAL 35 S - 4X

### 35AJ JACKET WITH ATTACHED HOOD

- Snap front closure with storm flap
- Attached hood with drawstring closure
- Raglan shoulder design for ease of movement

35001-00 Sizes S-4X



### 35BT BIB TROUSERS

- Bib front coverage
- Elastic suspenders
- Non-conductive suspender fasteners

35001-12 Sizes S-4X



**APPLICATIONS:** Construction, General Purpose, Food Processing, Basic/Minimal Chemical Protection, Sanitation Applications, Maintenance, Environmental Clean-Up

Stock Colors:





COMBAT HEAT STRESS & FATIGUE WITH AN  
**INTENSE COOLING EXPERIENCE**

**COOLS BODY TEMPERATURE**

**MOISTURE MANAGEMENT**

Workers who spend their days in hot environments are at risk of heat stress, whether it's outdoors during a heat wave or inside a hot manufacturing facility without air conditioning. Heat stress, if it goes unchecked, can lead to occupational illnesses and injuries.

Radians advanced Arctic Radwear® technology helps keep workers cool for up to five hours. The line includes cooling towels, wraps, headbands, head shades, hi-vis t-shirts, hard hat sweatbands, and more.



Evaporative technology is activated when soaked in water for 2-3 minutes  
 Cooling effect lasts about 5 hours  
 Can be reactivated over and over

**COOLING WRAP XT**

With Advanced ARCTIC™ Microfiber Technology

- Cools Body Temperature
- Moisture Management
- Microfiber Technology

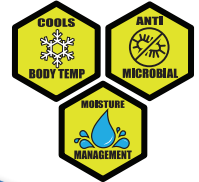
Wrap Dimensions: 32.5" X 12"  
 Reusable Packaging



RCS20 Cooling Wrap XT

**COOLING TOWEL**  
 w/ Advanced ARCTIC™ Technology

- 100% PVA material
- Dimensions: 26" x 17"
- Reusable Packaging



RCS10 Blue Cooling Towel  
 RCS11 Hi-Vis Lime Cooling Towel

**COUNTER DISPLAYS**

- RCS-CD1 24 Blue Cooling Towels
- RCS-CD2 24 HV Lime Cooling Towels
- RCS-CD3 12 Blue, 12 HV Lime Cooling Towels



**COOLING WRAP**

- 100% PVA material
- Dimensions: 26" x 8.25"
- Reusable Packaging



RCS50 Blue Cooling Wrap  
 RCS51 HV Lime Cooling Wrap  
 RCS52 Pink Cooling Wrap

**COUNTER DISPLAYS**

- RCS-WCD1 24 Blue Cooling Wraps
- RCS-WCD2 24 HV Lime Cooling Wraps
- RCS-WCD3 24 Pink Cooling Wraps
- RCS-WCD4 12 Blue, 6 HV Lime, 6 Pink Cooling Wraps
- RCS-WCD5 12 Blue and 12 HV Lime Cooling Wraps



**HEAD SHADE**

Head Shade Stretch Fit Design is protected under Patent Number D746,555



RCS309 Digital Camo Head Shade



### **RWL25 HINGED BALACLAVA**

- Premium 100% soft polyester fleece for superior warmth and comfort
- Hinged design for a comfortable fit and versatility
- Can be worn as a full face mask, neck gaiter, or face shield
- Mesh fabric over mouth facilitates breathing
- Wind-resistant fabric covers nose, mouth, and neck
- Available in High-Visibility Green or Black



RWL25BK Black

RWL25HVG High-Visibility Green

### **RWL26 3-IN-1 TWO-PIECE BALACLAVA**

- Premium 100% soft polar fleece for superior warmth and comfort
- Two-piece design for a comfortable fit and versatility
- Can be worn as a full face mask, neck gaiter, or beanie
- Hook and loop straps attach to a hard hat suspension for enhanced stability
- Detachable beanie and gaiter with hook and loop
- Available in High-Visibility Green or Gray



RWL26GY Gray

RWL26HVG High-Visibility Green



**Reduce. Reuse.  
Recycle. Wear.**



Each year, an estimated sixty million water bottles are thrown away each day in America. It can take up to seven hundred years for just one plastic bottle to break down and biodegrade. Throwing away plastic bottles hurts the environment.

To solve these problems, people have worked together to develop a process to recycle plastic bottles and turn them into useful items, including furniture, fences, bags, containers, rugs, clothing, and of all things, gloves!

Bellingham<sup>®</sup> by Radians is proud to introduce ECO-Master gloves made with recycled yarn and synthetic fiber materials. All materials used meet the Global Recycled Standard. The standard applies to the full supply chain helping to eliminate reclaimed materials from entering the waste stream.

ECO-Master C3705 and KT470 are knit using recycled polyester yarn resulting in a soft but strong seamless shell that is comfortable on the hand and wicks perspiration to help keep the hand dry.

The C3705AC nitrile palm coating is breathable for added comfort, has high abrasion resistance for improved wear, and micro finish textured for excellent wet or dry grip. The KT470 incorporates a natural rubber palm coating resulting in excellent grip, durability, and protection for smaller hands.

The C7735 Ladies Performance gloves are made with recycled materials throughout. The gloves feature a reinforced foam spandex shell, shirred elastic knit wrist for snug comfortable fit, reinforced fingertips, touchscreen index finger and thumb, and durable reinforced synthetic leather palm for durability and protection.

**ECO MASTER<sup>®</sup> NITRILE  
C3705AC**

13-gauge **recycled polyester**.  
Seamless design molds to the hand  
Black micro-foam nitrile palm coating  
3 assorted colors  
Sizes: XS-L



**ECO MASTER<sup>®</sup> LADIES  
SYNTHETIC LEATHER PALM  
C7735**

**Recycled foam laminated spandex**  
back with slip-on cuff and pull tab  
Reinforced synthetic leather fingertips  
**Recycled synthetic leather palm** with  
touchscreen capability on first two  
fingers and thumb  
Sizes: S-L



**ECO MASTER<sup>®</sup> for KIDS  
CRINKLE LATEX  
KT470**

Tough, lightweight 13-gauge  
**recycled polyester shell**.  
Excellent grip, wet or dry.  
Crinkle orange latex palm  
Size: XS



**Kid Size!**



Check out the great  
**PL12ECO** merchandising option  
on page 40!

**ECO  
MASTER<sup>®</sup>**

The  
**bamboo  
Gardener.**



**Breathable.  
Hypoallergenic.  
Antibacterial.  
Sustainable.**

Bellingham<sup>®</sup> Bamboo Gardener<sup>™</sup> gloves are synonymous with Bellingham's long-standing reputation for quality, innovation, and industry firsts.

Bellingham first incorporated the use of renewable and sustainable bamboo fiber to manufacture and supply seamless bamboo rayon palm dipped garden gloves in 2011.

Since that time, Bamboo Gardener<sup>™</sup> gloves have been used and appreciated by gardeners, landscape professionals, growers, DIY home, and Farm & Ranch owners worldwide.

Bamboo rayon is the first man-made natural-based fiber dating back to the late 1800's. It is a regenerated textile considered to be one of the most versatile and economical manufactured fibers available. Not only is it hypoallergenic, but it also offers softness, durability, and moisture-wicking properties.

The original Bamboo Gardener<sup>™</sup> C5301 Rubber Palm glove provides excellent grip wet or dry along with excellent puncture resistance.

The original Bamboo Gardener<sup>™</sup> C5371 Nitrile Palm provides excellent dexterity, improved breathability, and comfort, and added abrasion resistance.

The new C5370AC Bamboo Gardener<sup>™</sup> assorted color nitrile palm gloves join the original styles featuring pastel fashion colors with sizing exclusively to fit women's hands.

Everyone enjoys fresh new colors in the garden. Add Bamboo Gardener<sup>™</sup> assorted color garden gloves to your store's selection today!

**BAMBOO GARDENER<sup>™</sup>  
LADIES NITRILE C5370AC** Sizes: S-L

Soft, comfortable 13-gauge bamboo rayon manufactured from **renewable bamboo rayon**  
Seamless design molds to the hand  
Abrasion and puncture-resistant black foam nitrile palm coating  
3 assorted colors



**Bamboo Gardener<sup>™</sup> Rubber Palm  
C5301** Sizes: S-L

Soft, comfortable 13-gauge **renewable bamboo rayon** seamless knit liner  
Durable, textured natural rubber palm  
Excellent grip, wet or dry



**Bamboo Gardener<sup>™</sup> Nitrile Palm  
C5371** Sizes: S-XL

Soft, comfortable 13-gauge **renewable bamboo rayon** seamless knit liner  
Abrasion and puncture-resistant nitrile coating molds to the hand  
Comfortable, with excellent dexterity



**C7333AC S-L**

**Ladies' Performance Synthetic Palm**

- Padded synthetic leather palm and reinforced fingertips add protection
- Patterned hyprene back provides attractive comfort and flexibility
- Shirred elastic wrist allows easy on and off
- Three assorted colors



**C7352 XS-XL**

**Thorn-resistant Gauntlet Gloves**

- Canvas gauntlet protects forearms
- Reinforced cowhide palm resists punctures
- Comfortable, abrasion resistant protection



**C7355AC S-L**

**Bellingham® Tuscany™ Ladies' Extended Gauntlet Gloves**

- Premium sheepskin leather palm
- Extended neoprene lined canvas gauntlet with embossed logo
- Leather is drum dyed, a natural finishing process
- Three assorted colors



**NEW AWARD WINNING DESIGN & FEATURES!**

**C7780 S-XXL**

**Men's Performance Goatskin**

- Goatskin leather palm
- Durable PVC overlays on fingertips
- Foam padded palm, neoprene knuckle guard, and thumb crotch provide extra comfort and protection
- Hook and loop closure provides a secure fit



**C7781 S-L**

**Ladies' Performance Goatskin**

- Goatskin leather palm
- Durable PVC overlays on fingertips
- Foam padded palm, neoprene knuckle guard, and thumb crotch provide extra comfort and protection
- Hook and loop closure provides a secure fit



**C7735 S-L**

**Eco Master® Ladies Synthetic Leather Palm**

- Recycled foam laminated spandex back with slip-on cuff and pull tab
- Reinforced synthetic leather fingertips
- Recycled synthetic leather palm touchscreen capability on first two fingers and thumb



**C7785 S-XXL**

**Men's Garden Pro Gloves**

- Synthetic Leather palm provides durability
- Foam padded palm, knuckle guard, and thumb crotch provide extra comfort and protection
- Hook and loop closure provides a secure fit



**C7785AC XS-L**

**Ladies' Garden Pro Gloves**

- Synthetic leather palm provides durability
- Foam padded palm, knuckle guard, and thumb crotch provide extra comfort and protection
- Hook and loop closure provides a secure fit
- 3 pack, 3 assorted colors



**C7784AC S-M**

**Bellingham® Tuscany™ Ladies' Performance Style Gloves**

- Soft feel leather
- Premium natural leather palm and fingertips
- Breathable spandex back with shirred wrist
- Three assorted colors



**C3111** L

**Economy Shoulder Gray Split Cowhide Leather**

- Gunn cut with wing thumb
- Leather knuckle strap
- Starch safety cuff
- Packaging: 6 poly bags of 12
- Case: 72 pairs/6 dozen



**C3200** M-XXL

**Regular Shoulder Gray Split Cowhide**

- Gunn cut with wing thumb
- Leather knuckle strap
- Rubberized safety cuff
- Packaging: 6 poly bags of 12
- Case: 72 pairs/6 dozen



**C3840** L-XL

**Premium Grain Pigskin Leather Palm**

- Gunn cut with wing thumb
- Leather knuckle strap
- Rubberized safety cuff
- Packaging: 6 poly bags of 12
- Case: 72 pairs/6 dozen



**C3200HV** L-XL

**Regular Shoulder Split Cowhide Leather Palm w/Hi-Vis Nylon Back**

- Gunn cut with wing thumb
- Reflective knuckle strap
- Rubberized safety cuff
- Packaging: 6 poly bags of 12
- Case: 72 pairs/6 dozen



**C4221** M-XXL

**Standard Grain Cowhide Leather Driver**

- Keystone thumb
- Pull strap
- Shirred wrist, cloth hem
- Packaging: 10 poly bags of 12
- Case: 120 pairs/10 dozen



**C2354** M-XXL

**Premium Grain Cowhide Driver**

- Premium quality grain cowhide
- Keystone thumb adds comfort and dexterity
- Rolled leather hem and shirred elastic wrist



**C90105** M-XXL

**Men's Premium Pigskin Leather Driver Work Gloves**

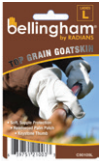
- Premium quality, supple grain pigskin
- Keystone thumb for comfort and dexterity
- Rolled leather hem and shirred elastic wrist
- Durable stitching



**C90109** S-L

**Ladies' Top Grain Goatskin Leather Driver Work Gloves**

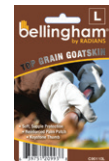
- Premium quality goatskin
- Keystone thumb adds comfort and dexterity
- Leather hem and shirred elastic wrist



**C90110** M-XXL

**Men's Top Grain Goatskin Leather Driver Work Gloves**

- Premium quality goatskin
- Keystone thumb adds comfort and dexterity
- Leather hem and shirred elastic wrist



**C3825** L-XL

**Regular Grain Pigskin Leather Palm**

- Gunn cut with wing thumb
- 150 Gram micro fleece lined
- Leather knuckle strap
- 4" Knit wrist
- Packaging: 6 poly bags of 12
- Case: 72 pairs/6 dozen



**C4225** M-XL

**Standard Grain Cowhide Leather Driver**

- Keystone thumb
- Red fleece lined
- Shirred wrist, cloth hem
- Packaging: 10 poly bags of 12
- Case: 120 pairs/10 dozen





**C3105**

L

**Economy Shoulder Gray Split Cowhide Leather Palm**

- Gunn cut with wing thumb
- Leather knuckle strap
- Red fleece lined
- Rubberized safety cuff
- Packaging: 6 poly bags of 12
- Case: 72 pairs/6 dz



**C3205**

M-XL

**Regular Shoulder Gray Split Cowhide**

- Gunn cut with wing thumb
- Leather knuckle strap
- 40 Gram Thinsulate® liner
- Rubberized safety cuff
- Packaging: 6 poly bags of 12
- Case: 72 pairs/6 dozen



**C2354i**

M-XL

**Premium Grain Cowhide Driver**

- Premium quality grain cowhide
- Keystone thumb adds comfort and dexterity
- Rolled leather hem and shirred elastic wrist
- 40-gram Thinsulate® lining



**C4001BK**

S-XXL

**Water-repellent PVC Palm**

- Water-repellent, breathable PVC palm coat
- Two-layer seamless insulated liner
- Comfortable, warm, cushioned

**WATER REPELLENT**



**C4003HV**

S-XXL

**Bellingham® Insulated Knit**

- 13-gauge nylon knit outer shell with insulating acrylic liner
- Durable, textured natural rubber palm
- Excellent grip, wet or dry



**C4400**

S-XXL

**Bellingham® Lightweight Thermal**

- Moisture-wicking 13-gauge knit liner
- Breathable nitrile palm coating
- Provides warmth without bulk



**C4505**

S-XL

**Bellingham® Denim™**

- Napped 10-gauge polyester seamless knit liner
- Durable, flexible, wrinkle-finish natural rubber palm
- Excellent grip, wet or dry

3P4505L 3-Pack Size L



Also sold in 3-PACKS



**C4510**

S-XL

**Bellingham® Grey™**

- Thick 10-gauge looped-terry acrylic knit liner
- Durable, flexible, wrinkle-finish natural rubber
- Excellent grip, wet or dry

3P4510 3-Pack Sizes: M,L,XL



Also sold in 3-PACKS



**SB4601**

S-XL

**Snow Blower™ Insulated Triple-dipped PVC/nitrile**

- Durable, flexible PVC/nitrile coating flexible to -4°F
- Soft acrylic fleece liner adds warmth
- Textured palm for excellent grip



**WG338**

XS-XXL

**WONDER GRIP® Thermo Plus**

- Double-dipped latex-coated glove
- Looped terry insulation adds warmth
- Textured palm for excellent grip
- Comfortable knit cuff



**WG318** S-XXL

WONDER GRIP® Liquidproof

- Durable, breathable 13-gauge seamless nylon knit liner
- Double-dipped latex-coated glove
- Textured palm for excellent grip
- Comfortable knit cuff



**WG310** XS-XL

WONDER GRIP® 310

- Durable, breathable 13-gauge seamless nylon knit liner
- Double-coated textured Wonder Grip® latex palm
- Excellent grip, wet or dry



**WG310HV** S-XXL

WONDER GRIP® 310HV

- Durable, breathable, hi-vis 13-gauge seamless polyester knit liner
- Double-coated textured Wonder Grip® latex palm
- Excellent grip, wet or dry



**WG515AC** XS-L

**NICELY NIMBLE®**

WONDER GRIP® Lightweight Nitrile Palm

- Tough, lightweight 15-gauge nylon and spandex seamless knit liner
- Durable, breathable single-coated Wonder Grip® textured nitrile palm
- Excellent grip, wet or dry
- 3 assorted colors



**WG510** S-XL

WONDER GRIP® EXTRA TOUGH

- Durable, breathable 13-gauge seamless nylon knit liner
- Double-coated textured Wonder Grip® nitrile palm
- Excellent grip, wet or dry



**WG510HV** S-XXL

WONDER GRIP® EXTRA TOUGH HI-VIS

- Durable, breathable, hi-vis 13-gauge seamless polyester knit liner
- Double-coated textured Wonder Grip® nitrile palm
- Excellent grip, wet or dry



**WG1850AC** XS-L

**NEARLY NAKED®**

WONDER GRIP® Ultra-Lightweight Nitrile Palm

- Comfortable, flexible, ultra-lightweight 18-gauge nylon and spandex seamless knit liner
- Durable, breathable single-coated Wonder Grip® textured nitrile palm
- Excellent grip, wet or dry
- 3 assorted colors



**C6201** S-XXL

Gloves for Big Jobs®

Triple-dipped PVC/nitrile

- Durable, flexible PVC/nitrile coating
- 15-gauge liner promotes excellent dexterity
- Textured palm for grip, 12" gauntlet



**KT470** XS



Eco Master® For Kids Crinkle Latex

- Tough, lightweight 13-gauge recycled polyester shell
- Excellent grip, wet or dry.
- Crinkle orange latex palm

**Kid Size!**



**C1052** T

DUCKY!®

- Bright yellow nylon knit
- Bright orange nitrile 3/4 dip coating
- Kids can use it as a puppet, too!
- Durable, washable, and lots of fun!



QUACK!  
QUACK!



**KT440AC** T-XS

Kid Tuff Too®

- Colorful, washable gloves
- Nylon knit with textured rubber palm, assorted colors and characters.



**KWG515AC** XXS-XS

WONDER GRIP® for kids!

- Tough, lightweight 15-gauge nylon and spandex seamless knit liner
- Durable, breathable single-coated Wonder Grip® textured nitrile palm
- Excellent grip, wet or dry
- Washable, 3 assorted colors



**NT3700AC** S-L

Bellingham<sup>®</sup> Nitrile TOUCH<sup>®</sup>

- Breathable 13-gauge seamless nylon knit liner
- Abrasion & puncture resistant nitrile coating molds to the hand and fits like a second skin
- Excellent dexterity
- 6 assorted colors



**NT3700BK** S-XL

Bellingham<sup>®</sup> Nitrile TOUGH<sup>®</sup>

- Breathable 13-gauge nylon knit liner
- Abrasion and puncture-resistant nitrile coating
- Fits like a second skin, wears like iron
- Excellent dexterity



**C3702** S-XL

Bellingham<sup>®</sup> Nitrile TOUGH<sup>®</sup> GT

- Comfortable, breathable 15-gauge nylon and spandex knit liner ensures excellent dexterity
- Breathable micro-foam palm coat protects hands and enhances grip, even when wet



**C3703** S-XL

Bellingham<sup>®</sup> Nitrile TOUGH<sup>®</sup> MAX

- 13-gauge hollow core liner helps keep hands cool and dry
- Breathable micro-foam palm coat protects hands and enhances grip



**C5370AC** S-L

The **bamboo Gardener** NITRILE

- Soft, comfortable 13-gauge **renewable bamboo rayon**
- Seamless design molds to the hand
- Abrasion and puncture-resistant black foam nitrile palm coating



**C3705AC** XS-L

ECO MASTER<sup>®</sup> Nitrile

- 13-gauge **recycled polyester**
- Seamless design molds to the hand
- Black micro-foam nitrile palm coating
- 3 assorted colors



**C5301** S-L

Bellingham<sup>®</sup> Bamboo Gardener<sup>™</sup> Rubber Palm

- Soft, comfortable 13-gauge **renewable bamboo rayon** seamless knit liner
- Durable, textured natural rubber palm
- Excellent grip, wet or dry



**C5371** S-XL

Bellingham<sup>®</sup> Bamboo Gardener<sup>™</sup> Nitrile Palm

- Soft, comfortable 13-gauge **renewable bamboo rayon** seamless knit liner
- Abrasion and puncture-resistant nitrile coating molds to the hand
- Comfortable, with excellent dexterity



**C515AC** S-L

**NICELY NIMBLE<sup>®</sup>**

GARD WARE<sup>®</sup> Lightweight Nitrile Palm

- Tough, lightweight 15-gauge nylon/spandex knit
- Excellent grip, wet or dry
- Durable, breathable textured nitrile palm



**C1850AC** S-L

**NEARLY NAKED<sup>®</sup>**

GARD WARE<sup>®</sup> Ultra-Lightweight Nitrile Palm

- Ultra-lightweight 18-gauge nylon/spandex knit
- Excellent grip, wet or dry
- Durable, breathable textured nitrile palm



**C310** S-L

GARD WARE<sup>®</sup> 310

- Durable, breathable 13-gauge seamless nylon knit
- Double-coated textured latex palm
- Excellent grip, wet or dry



**C318** S-XL

GARD WARE<sup>®</sup> Liquidproof

- Durable, breathable 13-gauge seamless nylon knit
- Double-coated textured latex palm
- Excellent grip, wet or dry



**C510** S-XL

GARD WARE<sup>®</sup> EXTRA TOUGH

- Durable, Hi-Vis 13-gauge polyester knit liner
- Double-dipped nitrile-coated gloves
- High durability textured palm
- Comfortable knit cuff



**C510HV** M-XL

GARD WARE<sup>®</sup> EXTRA TOUGH HI-VIS

- Durable, Hi-Vis 13-gauge nylon knit liner
- Double-coated textured nitrile palm
- Excellent grip, wet or dry



**C2603AP** S-L

Bellingham<sup>®</sup> COOL<sup>™</sup>

Patterned Polyurethane Palm

- Breathable 13-gauge polyester knit
- Breathable polyurethane palm coat
- Three assorted colors & patterns



**C3000** XS-XL

Bellingham<sup>®</sup> Blue<sup>™</sup>

- Premium 10-gauge 50/50 cotton and polyester seamless knit liner
- Durable, flexible, wrinkle-finish natural rubber palm protects hands
- Excellent grip, wet or dry



**C3000BK** S-XL

Bellingham<sup>®</sup> Black<sup>™</sup>

- Premium 10-gauge 50/50 cotton and polyester seamless knit liner
- Durable, flexible, wrinkle-finish natural rubber palm protects hands
- Excellent grip, wet or dry





**ECO MASTER**<sup>®</sup>

The **bamboo Gardener**<sup>™</sup>

**PL12ECO Garden Center Display**

The PL12ECO display incorporates three styles of Eco-Friendly garden gloves for women sized S-L and one style for kids sized extra-small. Help the environment by adding the free-standing display to your selection of garden gloves in store NOW!

**PL12ECO 144 PR**

**ECO-FRIENDLY<sup>™</sup>  
Assorted Garden Gloves\***

<b>C3705AC</b>	48 pairs	S-M-M-L	Ladies
<b>C5370AC</b>	48 pairs	S-M-M-L	Ladies
<b>C7735</b>	36 pairs	S-M-L	Ladies
<b>KT470</b>	12 pairs	XS	Kids

**BSRC7735 48 PR**

**ECO MASTER<sup>®</sup> LADIES  
Synthetic Leather Gloves**

<b>C7735S</b>	12 pairs
<b>C7735M</b>	24 pairs
<b>C7735L</b>	12 pairs



**Display Included**



**6-Peg Corrugate  
Floor Displays**

**FS6-C2354**

C2354, 36 pairs, sizes M-XL

**FS6-C2354i**

C2354i (insulated), 36 pairs, sizes M-XL

**FS6-C7780**

C7780, 36 pairs, sizes M-XXL

**FS6-C7781**

C7781, 36 pairs, sizes S-L

**FS6-C7785**

C7785, 36 pairs, sizes M-XXL

**FS6-C7785AC**

C7785AC, 36 pairs, sizes XS-L

**Displays Included**



**9-Peg Corrugate  
Floor Displays**

**FS9-LEATHERM**

Men's Leather Drivers: C90105, C2354,  
C90110, 54 pairs, sizes M-XL

**FS9-LEATHERW**

Women's Leather Gloves: C7333AC,  
C7785AC, C90109, 54 pairs, sizes S-L

**FS9-C2354**

C2354, 54 pairs, sizes M-XL

**Displays Included**



**PLANOGRAMS/FLOORSTANDS**



SCGARD21 2-sided rolling display

**Premium Lawn+Garden**  
50-peg Assortments  
(2-sided rolling rack included)

**SCGARD21**

C1850AC, C2603AP, C3705AC, C510, C515AC, C5301, C5371, C7333AC, C7355AC, C7780, C7781, C7785AC, C7785, KT440AC, NT3700AC, NT3700BK  
456 pairs, Sizes XS-XL

**SCGARD17**

NT3700AC, WG310, WG515AC, WG1850AC, WG510, C5301, NT3700BK, C3705AC, C7333AC, C7355AC, C7735, C2603AP, KT440AC, C5370AC  
498 pairs, Sizes XS-XL

**Lawn + Garden Planogram**

4' L&G Best Sellers Planogram

C1850AC, C2354, C3000, C515AC, C5301, C5371, C7333AC, C7735 C7780, C7781, C7785AC, C7785, C90105, C90109, C90110, KT440AC, NT3700AC, NT3700BK  
522 pairs, Kid Sizes: T, XXS, XS  
Women Sizes: S-L  
Men Sizes: M-XL  
**LGPOG4**

**ECO-FRIENDLY™**

Assorted Garden Gloves\*

144 pairs:  
C3705AC 48 pairs S-M-M-L Ladies  
C5370AC 48 pairs S-M-M-L Ladies  
C7735 36 pairs S-M-L Ladies  
KT470 12 pairs XS Kids  
**PL12ECO**



PL12ECO

**Best Sellers Planogram**

20 peg assortment <sup>△</sup>

C3000, C4510, C3702, NT3700BK, NT3700AC  
240 pairs S-XL  
**PL20BGC**

**GARD WARE® Favorites <sup>△</sup>**

C1850AC, C515AC, C310, C510 and C318 gloves,  
240 pairs Sizes S-XL  
**PLC20**

**Spring Best Sellers with GARD WARE® <sup>△</sup>**

C5301, C5371, C7333AC, NT3700AC, C3705AC, C310, C318, C510, C1850AC, and C515AC gloves,  
342 pairs Sizes S-L  
**PL30GARDEN19**

**Spring Best Sellers with Wonder Grip <sup>△</sup>**

C7333AC, WG318, WG1850AC, WG515AC, WG310, WG510, C3705AC, C5371, C5301, and NT3700AC gloves,  
342 pairs Sizes S-L  
**PL30GARDEN**

<sup>△</sup> Displays Available Upon Request (no extra charge)



PLC20



PL30GARDEN

**FLOOR STANDS**



**Farm + Ranch/Leather<sup>△</sup>**

**PL12LEATHERM** Men's 72 pair Leather:  
C2354, C90105, C90110, Sizes M-XXL

**PL12RANCHW** 72 pair: C7333AC,  
C90109, C7735, C7355AC Sizes S-L



PL12LEATHERM



PL12RANCHW

**GARD WARE<sup>®</sup> Medley**

C1850AC, C515AC, C310, and C510 assorted work gloves  
144 pairs

**PLC12** Sizes S-XL (Display available upon request)



PLC12



**Wonder Grip<sup>®</sup> Medley<sup>△</sup>**

WG1850AC, WG515AC, WG310,  
and WG510 assorted work gloves,  
144 pairs S-XL  
**PLWG12**



**Bellingham<sup>®</sup> Bestsellers<sup>△</sup>**

NT3700AC, NT3700BK, and  
C3000 gloves, 144 pairs, Sizes S-XL  
**PL12BGC**



PL12BGC

**Nitrile Touch<sup>®</sup> & Tough<sup>®</sup><sup>△</sup>**

NT3700AC & NT3700BK  
assorted nitrile palm gloves,  
144 pairs, Sizes S-XL  
**PLNT12**



PLNT12

<sup>△</sup> Displays Available Upon Request (no extra charge)



**BASKETS**

**Cool™ Gloves Basket**  
C2603AP assorted colors, with basket,  
POS sign and plastic clip, 72 pairs  
BASKET2603AP Sizes S-L



**ECO Master® Basket**  
C3705AC assorted colors, with basket,  
POS sign and plastic clip, 72 pairs  
BASKETECO Sizes XS-L



**Nitrile Bamboo Basket**  
C5371 bamboo gloves, with basket,  
POS sign and plastic clip, 84 pairs  
BASKET5371 Sizes S-XL



Displays Included

**BINS**

**Nitrile Touch® Bins**  
Nitrile Touch® palm dipped gloves  
BINNT3700AC2 96 pairs, sizes S-L

**Nitrile Tough® Bins**  
Nitrile Tough® palm dipped gloves  
BINNT3700BK2 96 pairs, sizes S-XL

**Insulated Knit Half Bin**  
Hi-Vis Yellow acrylic lined  
waterproof palm gloves  
BINC4003HV2 72 pairs, sizes M-XXL



**Bellingham® Cool™ Half Bin**  
Bellingham® Cool™ assorted color and  
patterned polyurethane palm gloves.  
BIN2603AP2 96 pairs, sizes S-L



**Wonder Grip® 338 Half Bin**  
Wonder Grip® Thermo Plus insulated  
double-dipped latex coated gloves.  
BINWG3382 72 pairs, sizes S-XXL

**Black™ Latex Half Bin**  
Bellingham® Black™ rubber latex palm  
gloves, 72 pairs C3000BK, sizes S-XL  
BINBLACK2

**Blue™ Latex Half Bin**  
Bellingham® Blue™ rubber latex palm  
gloves, 72 pairs, sizes S-XL  
BINBLUE2

**Snow Blower™ Half Bin**  
Insulated Snow Blower™ gloves  
BINSB46012 36 pairs, sizes M-XL



**GARD WARE®  
Nicely Nimble® Half Bin**  
C515AC assorted colors, 96 pairs  
BINCS15AC2 Sizes S-L



Displays Included

**METAL SPINNER RACKS**



**GARD WARE® Spinner**  
C310 & C515AC (Sizes S-M)  
C510 Sizes M-L, 72 pairs  
BSRC3

**Kid-Tuff™ Too™ Spinner**  
KT440ACT, KT440ACXS and KT440ACXS  
gloves for children,  
72 pairs, Sizes T, XXS, XS  
BSRKT440AC



**Performance Spinner**  
C7780 & C7785 (M-XXL),  
48 pairs  
BSRPERFM

**Nitrile TOUCH® Spinner**  
NT3700AC Nitrile TOUCH® gloves,  
6 colors, 96 pairs, Sizes S-L  
SRNTAC

**ECO MASTER® Ladies**  
48 pairs:  
C7735S, 12 pairs Size S  
C7735M, 24 pairs Size M  
C7735L, 12 pairs Size L  
BSRC7735



**WOODEN SPINNER RACKS**



**Bamboo Gardener Spinner**  
C5301 & C5371 bamboo rayon work gloves,  
96 pairs, Sizes S-L  
SRBAMBOO

**Women's Performance Spinners**  
SRCPERFW C7781 Performance Gloves, Sizes S-L, 48 pairs  
SRCPERFW2 C7333AC Sizes XS-L and C7785AC Sizes XS-L,  
48 pairs Performance Gloves, Assorted Colors

Displays Included

**COUNTERTOP RACKS**



**GARD WARE®  
Nearly Naked® Countertop**  
C1850AC lightweight garden gloves,  
48 pairs, Sizes S-L  
CTDC1850AC

**GARD WARE®  
Nicely Nimble® Countertop**  
C515AC lightweight garden gloves,  
48 pairs, Sizes S-L  
CTDC515AC

Displays Included



**Bamboo Latex Palm  
Countertop Display**  
C5301 Bamboo Gardener™ with latex palm, 48  
pairs, Sizes S-L  
CTDC5301

**Bamboo Nitrile Palm  
Countertop Display**  
C5371 Bamboo Gardener™ with nitrile palm,  
48 pairs, Sizes S-L  
CTDC5371



**Nitrile TOUCH®  
Countertop Display**  
Best-selling Nitrile TOUCH® gloves, six colors,  
48 pairs, Sizes S-L  
CTDNT3700AC

**NEW  
ASSORTED  
COLORS!**

**Ladies Bamboo Gardener  
Countertop Display**  
C5370AC Ladies Bamboo Gardener™ with nitrile palm,  
3 assorted colors, 48 pairs, Sizes S-L  
CTDC5370AC



# CUSTOM IMPRINTING & EMBROIDERY



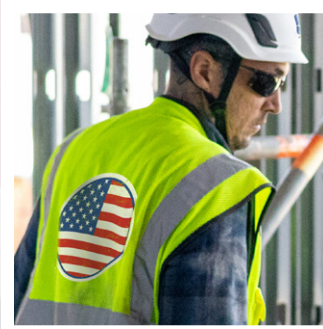
## QUICK. CUSTOM. IN HOUSE.

Branding PPE with your logo, company name, or safety message not only elevates and differentiates your brand, but it offers these value-added benefits too:

**YOUR PPE** protects people and advertises your business and brands

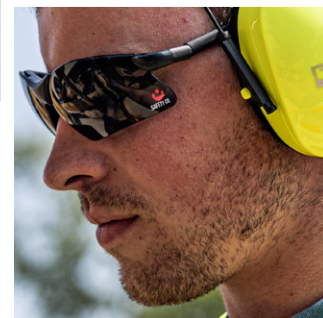
**YOUR COMPANY** exudes professionalism and a greater sense of corporate identity

**YOUR EMPLOYEES** are easily recognizable and feel part of a team

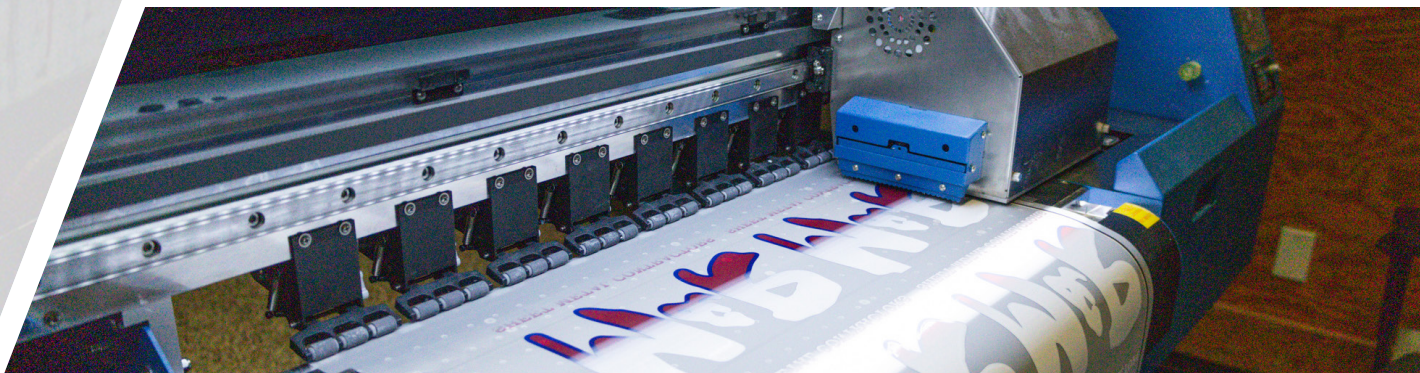


## USA-BASED IN-HOUSE SERVICES FOR RELIABLE & CONSISTENT RESULTS

At Radians, we are committed to maintaining our custom imprinting and embroidery services in-house, proudly based in the U.S.A. Unlike other PPE manufacturers, we manage all aspects of production at our facilities in Tennessee & North Carolina. This enables us to meticulously oversee and control every detail of your request, guaranteeing top-notch quality and unmatched turnaround times.



Scan to learn  
more about  
custom imprinting



CALL YOUR SALES REPRESENTATIVE FOR MORE INFORMATION: 877.723.4267

# DEWALT®

## CUSTOM IMPRINTING

## CUSTOM IMPRINT + EMBROIDERY

Make your safety gear do double duty for you by choosing custom imprinted PPE (screen printing, pad printing, heat transfer PVC adhesive labels, and embroidery). Radians' Custom Imprinting Program can turn your PPE into a walking billboard!

### PROMOTE. PROTECT. PERFORM.



## QUICK • CUSTOMIZED • ECONOMICAL

- **QUICK**—7 day turn-around time for in-stock colors and products
- **CUSTOMIZED**—Your Logo – Your Message printed in multiple colors
- **ECONOMICAL**—Low minimums – Low Prices

## CUSTOM GEAR MADE EASY

1. SUBMIT YOUR LOGO
2. APPROVE YOUR PROOF
3. PRODUCTION BEGINS



### ORDERS/INFO

SCAN THE QR CODE  
OR CONTACT US:

[DEWALTPPE@RADIAN.COM](mailto:DEWALTPPE@RADIAN.COM)





**PERSONAL PROTECTIVE EQUIPMENT**  
DIY · LAWN+GARDEN · FARM+RANCH · CONSTRUCTION



**HEADQUARTERS** 5305 Distriplex Farms Drive | Memphis, Tennessee 38141  
Toll Free: 877-723-4267 | Phone: 901-388-7776 | Fax: 901-266-2558 | sales@radians.com  
**WWW.RADIANS.COM**

**FIND US ON:**



**WARNING:** Cancer and reproductive harm - www.P65warnings.ca.gov

5082\_REV07 060124